

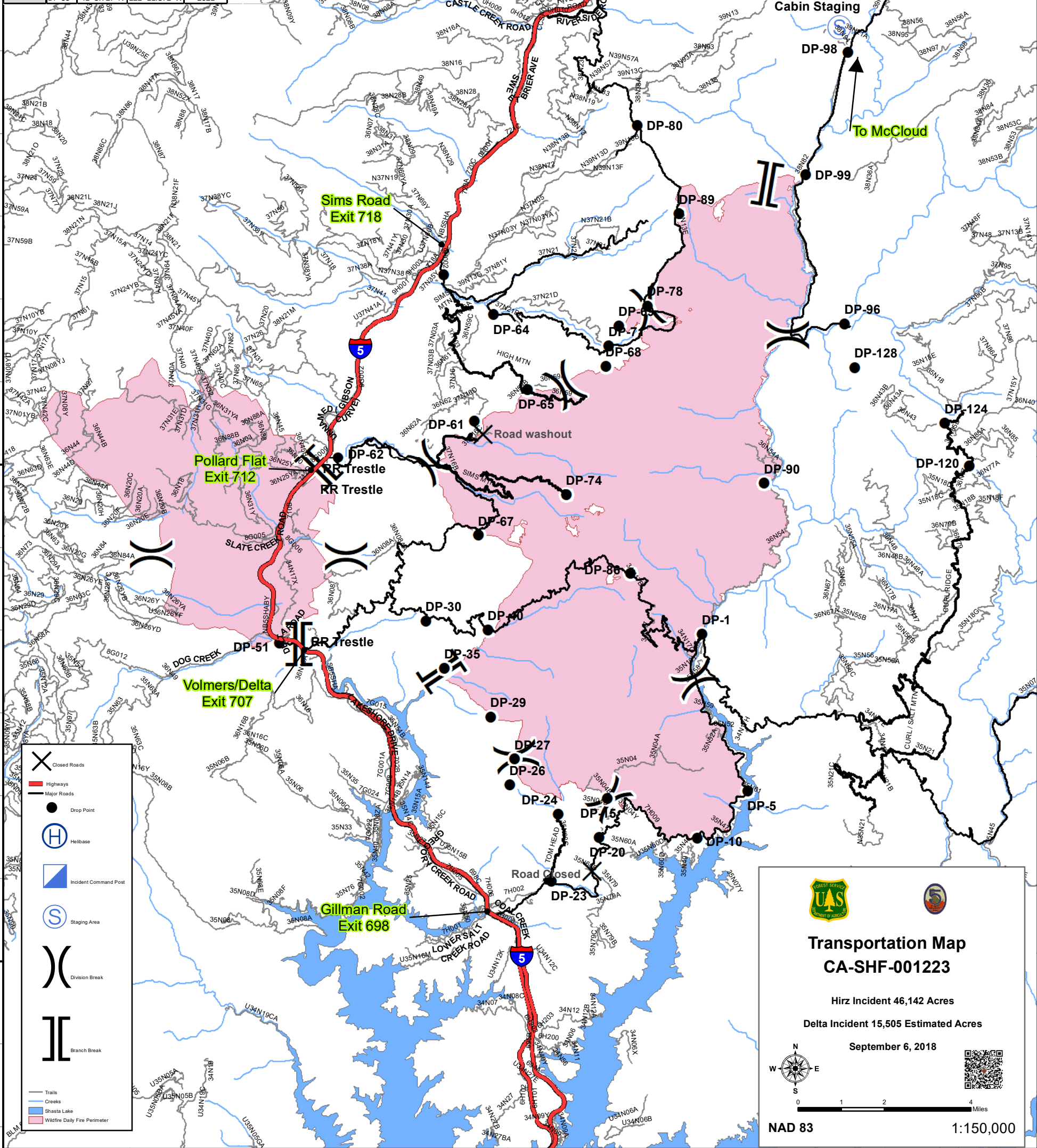
122°30'0"W

122°20'0"W

122°10'0"W



Type	Label	Latitude	Longitude	Altitude
Drop Point	DP-1	40° 56.492' N	122° 14.735' W	1263
	DP-5	40° 53.329' N	122° 13.565' W	1176
	DP-10	40° 52.393' N	122° 14.916' W	1377
	DP-15	40° 53.195' N	122° 17.282' W	1874
	DP-20	40° 52.421' N	122° 17.520' W	1819
	DP-23	40° 51.548' N	122° 18.796' W	1259
	DP-24	40° 52.885' N	122° 18.600' W	1429
	DP-26	40° 53.485' N	122° 19.878' W	2476
	DP-27	40° 54.004' N	122° 19.740' W	2838
	DP-29	40° 54.856' N	122° 20.372' W	2693
	DP-30	40° 56.797' N	122° 22.069' W	2107
	DP-35	40° 55.842' N	122° 21.580' W	1199
	DP-40	40° 56.612' N	122° 20.429' W	1411
	DP-51	40° 56.375' N	122° 25.964' W	1260
	DP-61	41° 0.831' N	122° 20.744' W	2089
	DP-62	41° 00.099' N	122° 24.366' W	1359
	DP-64	41° 02.958' N	122° 20.211' W	1906
	DP-65	41° 01.445' N	122° 19.315' W	3420
	DP-67	40° 58.514' N	122° 20.664' W	3234
	DP-68	41° 01.901' N	122° 17.235' W	3674
	DP-69	41° 02.713' N	122° 16.887' W	3432
	DP-71	41° 2.310' N	122° 17.155' W	2803
	DP-73	41° 3.767' N	122° 21.521' W	1763
	DP-74	40° 59.321' N	122° 18.312' W	3066
	DP-78	41° 4.961' N	122° 15.250' W	4271
	DP-80	41° 06.748' N	122° 16.346' W	4845
	DP-86	40° 57.730' N	122° 16.626' W	3015
	DP-89	41° 3.109' N	122° 16.116' W	4415
	DP-90	40° 59.512' N	122° 13.053' W	1890
	DP-96	41° 02.711' N	122° 10.875' W	1715
	DP-98	41° 8.182' N	122° 10.723' W	3130
	DP-120	40° 59.812' N	122° 07.594' W	3690
	DP-124	41° 00.699' N	122° 08.232' W	3961
	DP-128	41° 01.838' N	122° 10.618' W	3727
	DP-99	41° 5.727' N	122° 11.872' W	2021



**Legend**

- X Closed Roads
- Highways
- Major Roads
- Drop Point
- H Helibase
- Incident Command Post
- S Staging Area
- Division Break
- Branch Break
- Trails
- Creeks
- Shasta Lake
- Wildfire Daily Fire Perimeter

**Transportation Map**  
**CA-SHF-001223**

Hirz Incident 46,142 Acres  
 Delta Incident 15,505 Estimated Acres

September 6, 2018

NAD 83 1:150,000

Scale: 0 1 2 4 Miles

122°30'0"W

122°20'0"W

122°10'0"W

