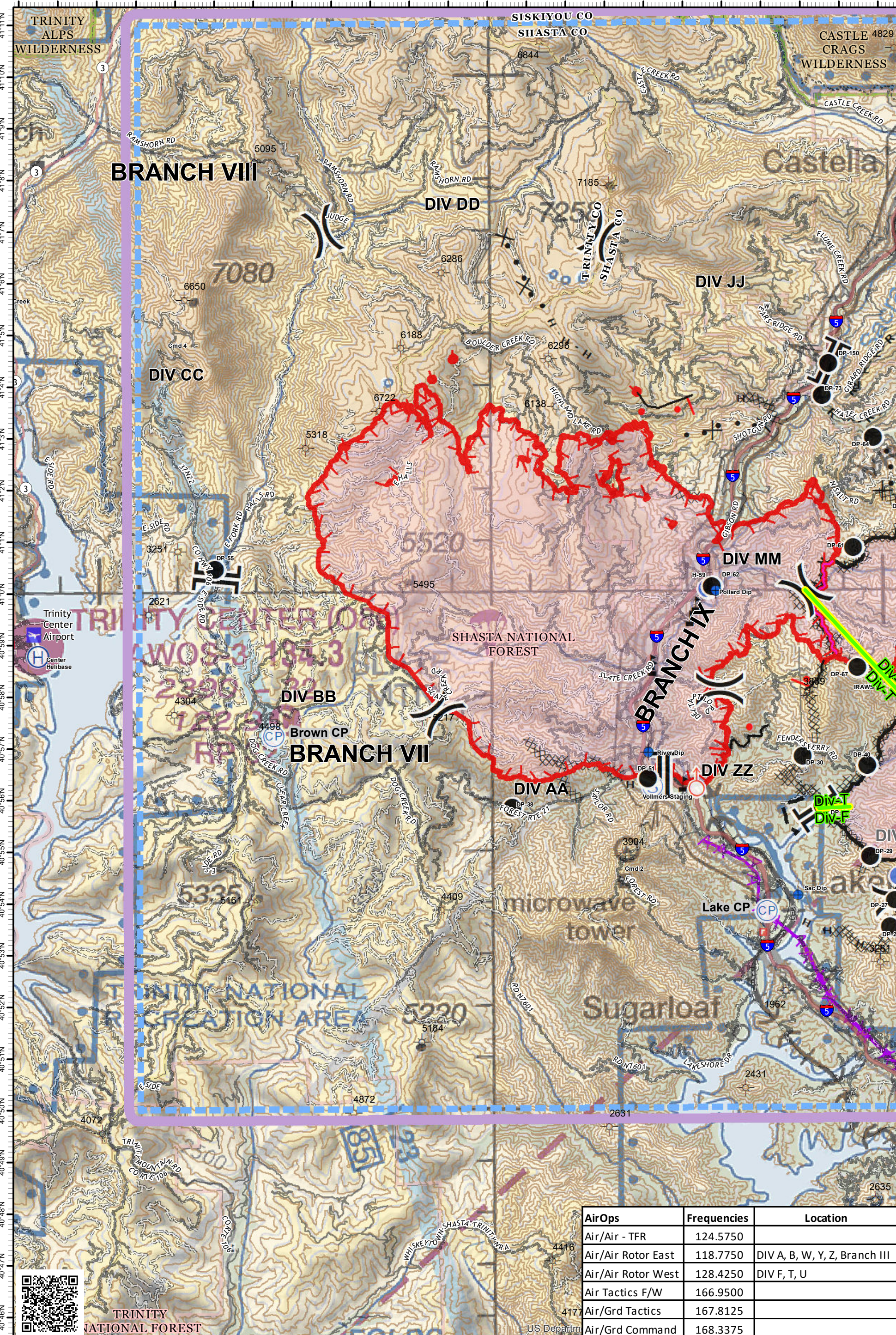


122°42'W 122°41'W 122°40'W 122°39'W 122°38'W 122°37'W 122°36'W 122°35'W 122°34'W 122°33'W 122°32'W 122°31'W 122°30'W 122°29'W 122°28'W 122°27'W 122°26'W 122°25'W 122°24'W 122°23'W 122°22'W 122°21'W 122°20'W



Delta Fire Pilot Map

CA-SHF-1223

September 9, 2018
40,580 Acres
Fire Perimeter as of 9/8 @ 2200 hrs.

- Wildfire Daily Fire Perimeter
- Uncontrolled Fire Edge
- Completed Line
- Completed Dozer Line

- H - Completed Hand Line
- R - Road as Completed Line

- Active Burnout
- Proposed Dozer Line
- Unknown

- Aerial Division Delineator
- Transmission Lines
- Dip Site
- Drop Point

- Helibase
- Helispot
- Spot Fire
- Staging Area
- Value at Risk
- Check Point

- Division Break
- Branch Break



MSL 9,000'



1:125,000 NAD 83
200' Contours

| AirOps | Frequencies | Location |
|--------------------|-------------|-------------------------------|
| Air/Air - TFR | 124.5750 | |
| Air/Air Rotor East | 118.7750 | DIV A, B, W, Y, Z, Branch III |
| Air/Air Rotor West | 128.4250 | DIV F, T, U |
| Air Tactics F/W | 166.9500 | |
| Air/Grd Tactics | 167.8125 | |
| Air/Grd Command | 168.3375 | |