

# AIR OPS MAP

TFR 9,000 MSL

# September 10, 2018

# HIRZ/DELTA INCIDENTS

122°41'W 122°39'W 122°37'W 122°35'W 122°33'W 122°31'W 122°29'W 122°27'W 122°25'W 122°23'W 122°21'W 122°19'W 122°17'W 122°15'W 122°13'W 122°11'W

	Fire Retardant Avoidance Terrestrial		Helibase		Zone Break		R - R - Road as Completed Line
	Fire Retardant Avoidance R05 Hydro		Helispot		Division Break		Active Burnout
	Aerial Hazard		Mobile Weather Unit		Branch Break		Planned Fire Line
	Division Break - Hirz		Repeater		Hirz Fire		4 Wheel Drive Rd
	Branch Break - Hirz		Spot Fire		Uncontrolled Fire Edge		Completed Line - Bagley
	Closure		Staging Area		Completed Line		Private Dozer Line
	Dip Site		Water Source		Completed Dozer Line		Completed Hand Line
	Water Tank		Value at Risk		Completed Dozer Line		
	Drop Point		Unknown				

Type	Label	Latitude	Longitude	Altitude
Aerial Hazard	Aerial Hazard	40° 57.352' N	122° 13.276' W	1267
Aerial Hazard	Aerial Hazard	41° 24.390' N	122° 24.240' W	2080
Aerial Hazard	Aerial Hazard	41° 05.280' N	122° 08.880' W	1880
Aerial Hazard	Aerial Hazard	41° 04.398' N	122° 09.442' W	1840

Type	Label	Latitude	Longitude	Altitude
Check Point	Fork CP	41° 1.0451' N	122° 6.6870' W	6000'
Check Point	Hat CP	41° 01.838' N	122° 10.618' W	3,500'
Check Point	Holiday CP	40° 47.917' N	122° 18.381' W	2,000'
Check Point	Jones CP	40° 48.870' N	122° 13.970' W	4,000'
Check Point	Lake CP	40° 53.818' N	122° 23.006' W	
Check Point	Brown CP	40° 57.236' N	122° 35.569' W	

Type	Label	Latitude	Longitude	Altitude
Dip Site	Hirz Dip	40° 52.085' N	122° 16.167' W	1119
Dip Site	McCloud Dip	40° 55.953' N	122° 14.963' W	1103
Dip Site	Pollard Dip	41° 01.315' N	122° 10.930' W	1361
Dip Site	Sac Dip	40° 54.115' N	122° 22.206' W	1109
Dip Site	River Dip	40° 56.895' N	122° 25.992' W	1160
Dip Site	Sikowsky Dip	41° 58.773' N	122° 11.823' W	1306

Type	Label	Latitude	Longitude	Altitude
Helibase	Mountain Gate HLB	40° 42.257' N	122° 20.246' W	
Helibase	Willow Creek HLB	41° 09.822' N	122° 09.058' W	2720
Helibase	Center HLB	40° 58.783' N	122° 41.569' W	

Type	Label	Latitude	Longitude	Altitude
Helispot	H-1	40° 54.932' N	122° 14.568' W	1155
Helispot	H-3	40° 57.670' N	122° 16.575' W	2968
Helispot	H-11	40° 51.733' N	122° 15.278' W	1087
Helispot	H-28	40° 54.470' N	122° 19.630' W	3236
Helispot	H-59	41° 00.056' N	122° 24.467' W	1359
Helispot	H-75	41° 02.666' N	122° 16.905' W	3276
Helispot	H-79	40° 59.115' N	122° 15.187' W	4672
Helispot	H-81	40° 58.793' N	122° 11.855' W	1306
Helispot	H-85	41° 03.032' N	122° 13.962' W	4266
Helispot	H-125	41° 00.895' N	122° 09.662' W	3659
Helispot	H-131	41° 02.972' N	122° 10.489' W	1750
Helispot	H-140	41° 05.108' N	122° 14.393' W	4793

## AIR OPS MAP

### CA-SHF-001223

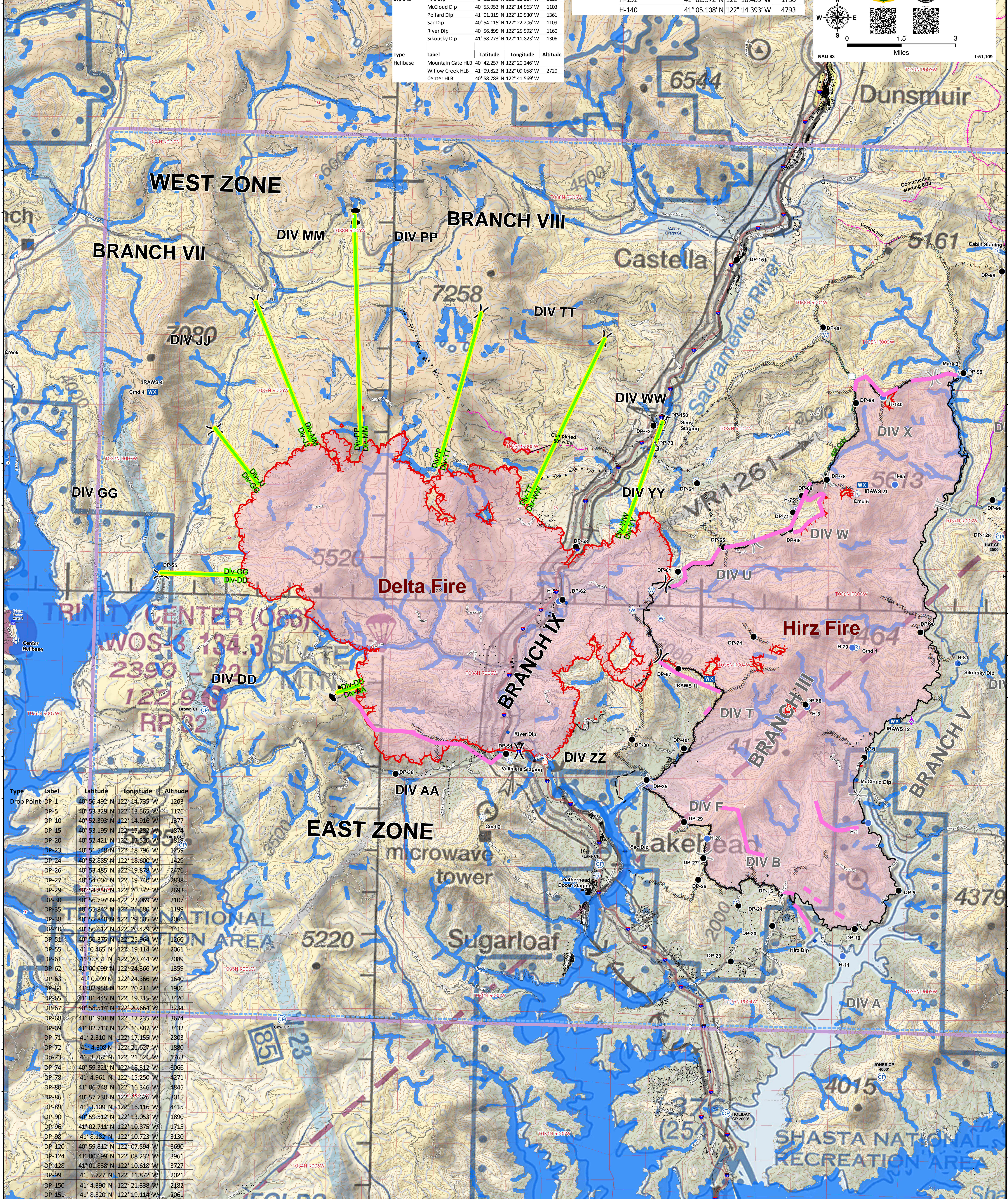
HIRZ INCIDENT  
46,150 ACRES

DELTA INCIDENT  
40,903 ACRES

NAD 83

0 1.5 3 Miles

1:51,100



Type	Label	Latitude	Longitude	Altitude
Drop Point	DP-1	40° 56.492' N	122° 14.735' W	1263
Drop Point	DP-5	40° 53.329' N	122° 13.565' W	1176
Drop Point	DP-10	40° 52.393' N	122° 14.916' W	1377
Drop Point	DP-15	40° 53.195' N	122° 17.292' W	1874
Drop Point	DP-20	40° 52.421' N	122° 17.520' W	1878
Drop Point	DP-23	40° 51.548' N	122° 18.796' W	1259
Drop Point	DP-24	40° 52.885' N	122° 18.600' W	1429
Drop Point	DP-26	40° 53.485' N	122° 19.878' W	2476
Drop Point	DP-27	40° 54.004' N	122° 19.740' W	2838
Drop Point	DP-29	40° 54.856' N	122° 20.372' W	2693
Drop Point	DP-30	40° 56.797' N	122° 22.069' W	2107
Drop Point	DP-35	40° 55.842' N	122° 21.680' W	1199
Drop Point	DP-38	40° 55.848' N	122° 29.505' W	2061
Drop Point	DP-40	40° 56.612' N	122° 20.429' W	1411
Drop Point	DP-51	40° 56.376' N	122° 25.964' W	1260
Drop Point	DP-55	41° 0.465' N	122° 19.114' W	2061
Drop Point	DP-61	41° 0.833' N	122° 20.744' W	2089
Drop Point	DP-62	41° 00.099' N	122° 24.366' W	1359
Drop Point	DP-63	41° 0.099' N	122° 24.366' W	1640
Drop Point	DP-64	41° 02.958' N	122° 20.211' W	1906
Drop Point	DP-65	41° 01.445' N	122° 19.315' W	3420
Drop Point	DP-67	40° 58.514' N	122° 20.664' W	3234
Drop Point	DP-68	41° 01.901' N	122° 17.235' W	3674
Drop Point	DP-69	41° 02.713' N	122° 16.887' W	3432
Drop Point	DP-71	41° 2.310' N	122° 17.155' W	2803
Drop Point	DP-72	41° 4.308' N	122° 21.627' W	1880
Drop Point	DP-73	41° 3.767' N	122° 21.521' W	1763
Drop Point	DP-74	40° 59.321' N	122° 18.312' W	3066
Drop Point	DP-78	41° 4.961' N	122° 15.250' W	4271
Drop Point	DP-80	41° 06.748' N	122° 16.346' W	4845
Drop Point	DP-86	40° 57.730' N	122° 16.626' W	3015
Drop Point	DP-89	41° 3.109' N	122° 16.116' W	4415
Drop Point	DP-90	40° 59.512' N	122° 13.053' W	1890
Drop Point	DP-96	41° 02.711' N	122° 10.875' W	1715
Drop Point	DP-98	41° 8.182' N	122° 10.723' W	3130
Drop Point	DP-120	40° 59.812' N	122° 07.594' W	3690
Drop Point	DP-124	41° 00.699' N	122° 08.232' W	3961
Drop Point	DP-128	41° 01.838' N	122° 10.618' W	3727
Drop Point	DP-99	41° 5.727' N	122° 11.872' W	2021
Drop Point	DP-150	41° 4.390' N	122° 21.338' W	2182
Drop Point	DP-151	41° 8.320' N	122° 19.114' W	2061