

	Fire Retardant Avoidance Terrestrial		Repeater		Completed Line
	Fire Retardant Avoidance R05 Hydro		Spot Fire		Completed Dozer Line
	Aerial Hazard		Staging Area		Completed Hand Line
	Division Break - Hirz		Water Source		Road as Completed Line
	Branch Break - Hirz		Water Tank		Access or Improved Road
	Closure		Value at Risk		Active Burnout
	Dip Site		Unknown		Proposed Dozer Line
	Drop Point		Zone Break		Planned Fire Line
	Helibase		Division Break		Planned Secondary Line
	Helispot		Branch Break		Completed Dozer Line - Bagley
	Mobile Weather Unit		Hirz Fire		Completed Line - Bagley
	Pump		Uncontrolled Fire Edge		Private Dozer Line

Type	Label	Latitude	Longitude	Altitude
Aerial Hazard	Aerial Hazard	40° 57.352' N	122° 13.276' W	1267
Aerial Hazard	Aerial Hazard	41° 24.390' N	122° 24.233' W	2080
Aerial Hazard	Aerial Hazard	41° 05.280' N	122° 08.880' W	1880
Aerial Hazard	Aerial Hazard	41° 04.398' N	122° 09.442' W	1840

Type	Label	Latitude	Longitude	Altitude
Check Point	Fork CP	41° 1.0451' N	122° 6.6870' W	6000'
Check Point	Hat CP	41° 01.838' N	122° 10.618' W	3,500'
Check Point	Holiday CP	40° 47.917' N	122° 18.381' W	2,000'
Check Point	Jones CP	40° 48.870' N	122° 13.970' W	4,000'
Check Point	Lake CP	40° 53.818' N	122° 23.006' W	1160'
Check Point	Brown CP	40° 57.236' N	122° 35.569' W	

Type	Label	Latitude	Longitude	Altitude
Dip Site	Hirz Dip	40° 52.085' N	122° 16.167' W	1119'
Dip Site	McCloud Dip	40° 55.953' N	122° 14.963' W	1103'
Dip Site	Pollard Dip	41° 01.315' N	122° 10.930' W	1361'
Dip Site	Sac Dip	40° 54.115' N	122° 22.206' W	1109'
Dip Site	River Dip	40° 56.895' N	122° 25.992' W	1160'
Dip Site	Sikowsky Dip	41° 58.773' N	122° 11.823' W	1306'

Type	Label	Latitude	Longitude	Altitude
Helibase	Mountain Gate HLB	40° 42.257' N	122° 20.246' W	2720'
Helibase	Willow Creek HLB	41° 09.822' N	122° 09.058' W	2720'
Helibase	Center HLB	40° 58.783' N	122° 41.569' W	

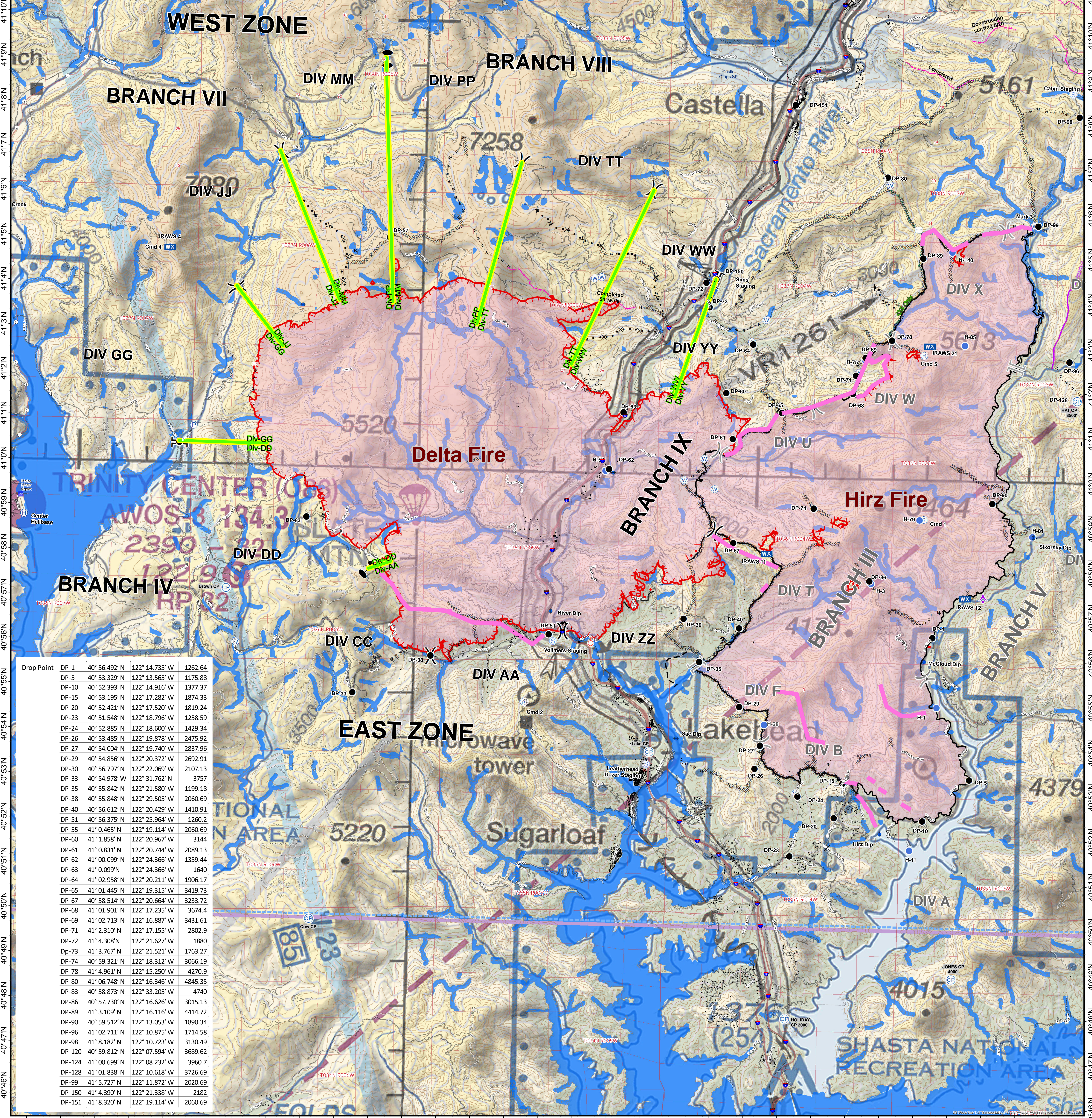
Type	Label	Latitude	Longitude	Altitude
Helispot	H-1	40° 54.932' N	122° 14.568' W	1155'
Helispot	H-3	40° 57.670' N	122° 16.575' W	2968'
Helispot	H-11	40° 51.733' N	122° 15.278' W	1087'
Helispot	H-28	40° 54.470' N	122° 19.630' W	3236'
Helispot	H-59	41° 00.056' N	122° 24.467' W	1359'
Helispot	H-75	41° 02.666' N	122° 16.905' W	3276'
Helispot	H-79	40° 59.115' N	122° 15.187' W	4672'
Helispot	H-81	40° 58.793' N	122° 11.855' W	1306'
Helispot	H-85	41° 03.032' N	122° 13.962' W	4266'
Helispot	H-125	41° 00.895' N	122° 09.662' W	3659'
Helispot	H-131	41° 02.972' N	122° 10.489' W	1750'
Helispot	H-140	41° 05.108' N	122° 14.393' W	4793'

AIR OPS MAP

CA-SHF-001223

0 1.5 3 Miles

1:51,100



Drop Point	DP-1	40° 56.492' N	122° 14.735' W	1262.64
DP-5	40° 53.329' N	122° 13.565' W	1175.88	
DP-10	40° 52.393' N	122° 14.916' W	1377.37	
DP-15	40° 53.195' N	122° 17.282' W	1874.33	
DP-20	40° 52.421' N	122° 17.520' W	1819.24	
DP-23	40° 51.548' N	122° 18.796' W	1258.59	
DP-24	40° 52.885' N	122° 18.600' W	1429.34	
DP-26	40° 53.485' N	122° 19.878' W	2475.92	
DP-27	40° 54.004' N	122° 19.740' W	2837.96	
DP-29	40° 54.856' N	122° 20.372' W	2692.91	
DP-30	40° 56.797' N	122° 22.069' W	2107.13	
DP-33	40° 54.978' N	122° 31.762' N	3757	
DP-35	40° 55.842' N	122° 21.580' W	1199.18	
DP-38	40° 55.848' N	122° 29.505' W	2060.69	
DP-40	40° 56.612' N	122° 20.429' W	1410.91	
DP-51	40° 56.375' N	122° 25.964' W	1260.2	
DP-55	41° 0.465' N	122° 19.114' W	2060.69	
DP-60	41° 1.858' N	122° 20.967' W	3144	
DP-61	41° 0.831' N	122° 20.744' W	2089.13	
DP-62	41° 00.099' N	122° 24.366' W	1359.44	
DP-63	41° 0.099' N	122° 24.366' W	1640	
DP-64	41° 02.958' N	122° 20.211' W	1906.17	
DP-65	41° 01.445' N	122° 19.315' W	3419.73	
DP-67	40° 58.514' N	122° 20.664' W	3233.72	
DP-68	41° 01.901' N	122° 17.235' W	3674.4	
DP-69	41° 02.713' N	122° 16.887' W	3431.61	
DP-71	41° 2.310' N	122° 17.155' W	2802.9	
DP-72	41° 4.308' N	122° 21.627' W	1880	
DP-73	41° 3.767' N	122° 21.521' W	1763.27	
DP-74	40° 59.321' N	122° 18.312' W	3066.19	
DP-78	41° 4.961' N	122° 15.250' W	4270.9	
DP-80	41° 06.748' N	122° 16.346' W	4845.35	
DP-83	40° 58.873' N	122° 33.205' W	4740	
DP-86	40° 57.730' N	122° 16.626' W	3015.13	
DP-89	41° 3.109' N	122° 16.116' W	4414.72	
DP-90	40° 59.512' N	122° 13.053' W	1890.34	
DP-96	41° 02.711' N	122° 10.875' W	1714.58	
DP-98	41° 8.182' N	122° 10.723' W	3130.49	
DP-120	40° 59.812' N	122° 07.594' W	3689.62	
DP-124	41° 00.699' N	122° 08.232' W	3960.7	
DP-128	41° 01.838' N	122° 10.618' W	3726.69	
DP-99	41° 5.727' N	122° 11.872' W	2020.69	
DP-150	41° 4.390' N	122° 21.338' W	2182	
DP-151	41° 8.320' N	122° 19.114' W	2060.69	