

Type	Label	Latitude	Longitude	Altitude
Drop Point	DP-1	40° 56.492' N	122° 14.735' W	1262.64
Drop Point	DP-5	40° 53.329' N	122° 13.565' W	1175.88
Drop Point	DP-10	40° 52.393' N	122° 14.916' W	1377.37
Drop Point	DP-15	40° 53.195' N	122° 17.282' W	1874.33
Drop Point	DP-20	40° 52.421' N	122° 17.520' W	1819.24
Drop Point	DP-23	40° 51.548' N	122° 18.796' W	1258.59
Drop Point	DP-24	40° 52.885' N	122° 18.600' W	1429.34
Drop Point	DP-26	40° 53.485' N	122° 19.878' W	2475.92
Drop Point	DP-27	40° 54.004' N	122° 19.740' W	2837.96
Drop Point	DP-29	40° 54.856' N	122° 20.372' W	2692.91
Drop Point	DP-30	40° 56.797' N	122° 22.069' W	2107.13
Drop Point	DP-33	40° 54.978' W	122° 31.762' N	3757
Drop Point	DP-35	40° 55.842' N	122° 21.580' W	1199.18
Drop Point	DP-38	40° 55.848' N	122° 29.505' W	2060.69
Drop Point	DP-40	40° 56.612' N	122° 20.429' W	1410.91
Drop Point	DP-41	40° 56.113' N	122° 27.460' W	1360
Drop Point	DP-51	40° 56.375' N	122° 25.964' W	1260.2
Drop Point	DP-54	40° 56.900' N	122° 26.303' W	3862
Drop Point	DP-55	41° 0.465' N	122° 19.114' W	2060.69
Drop Point	DP-57	41° 5.150' N	122° 30.998' W	5857
Drop Point	DP-56	41° 4.077' N	122° 28.442' W	5929
Drop Point	DP-58	41° 9.833' N	122° 26.813' W	5450
Drop Point	DP-61	41° 1.858' N	122° 20.967' W	3144
Drop Point	DP-61	41° 0.831' N	122° 20.744' W	2089.13
Drop Point	DP-62	41° 0.099' N	122° 24.365' W	1359.44
Drop Point	DP-63	41° 0.099' N	122° 24.365' W	1640
Drop Point	DP-64	41° 02.958' N	122° 20.211' W	1906.17
Drop Point	DP-65	41° 01.445' N	122° 19.315' W	3419.73
Drop Point	DP-67	40° 58.514' N	122° 20.664' W	3233.72
Drop Point	DP-68	41° 01.901' N	122° 17.235' W	3674.4
Drop Point	DP-69	41° 02.713' N	122° 16.887' W	3431.61
Drop Point	DP-71	41° 2.310' N	122° 17.155' W	2802.9
Drop Point	DP-72	41° 4.308' N	122° 21.627' W	1880
Drop Point	DP-73	41° 3.767' N	122° 21.521' W	1763.27
Drop Point	DP-74	40° 59.321' N	122° 18.312' W	3066.19
Drop Point	DP-78	41° 4.961' N	122° 15.250' W	4270.9
Drop Point	DP-80	41° 06.748' N	122° 16.346' W	4845.35
Drop Point	DP-85	40° 59.053' N	122° 35.020' W	4731
Drop Point	DP-83	40° 58.873' N	122° 33.205' W	4740
Drop Point	DP-86	40° 57.730' N	122° 16.626' W	3015.13
Drop Point	DP-89	41° 3.109' N	122° 16.116' W	4414.72
Drop Point	DP-90	40° 59.512' N	122° 13.053' W	1890.34
Drop Point	DP-96	41° 02.711' N	122° 10.875' W	1714.58
Drop Point	DP-98	41° 8.182' N	122° 10.723' W	3130.49
Drop Point	DP-120	40° 59.812' N	122° 07.594' W	3689.62
Drop Point	DP-124	41° 00.699' N	122° 08.232' W	3960.7
Drop Point	DP-128	41° 01.838' N	122° 10.618' W	3726.69
Drop Point	DP-99	41° 5.727' N	122° 11.872' W	2020.69
Drop Point	DP-150	41° 4.390' N	122° 21.338' W	2182
Drop Point	DP-151	41° 8.320' N	122° 19.114' W	2060.69

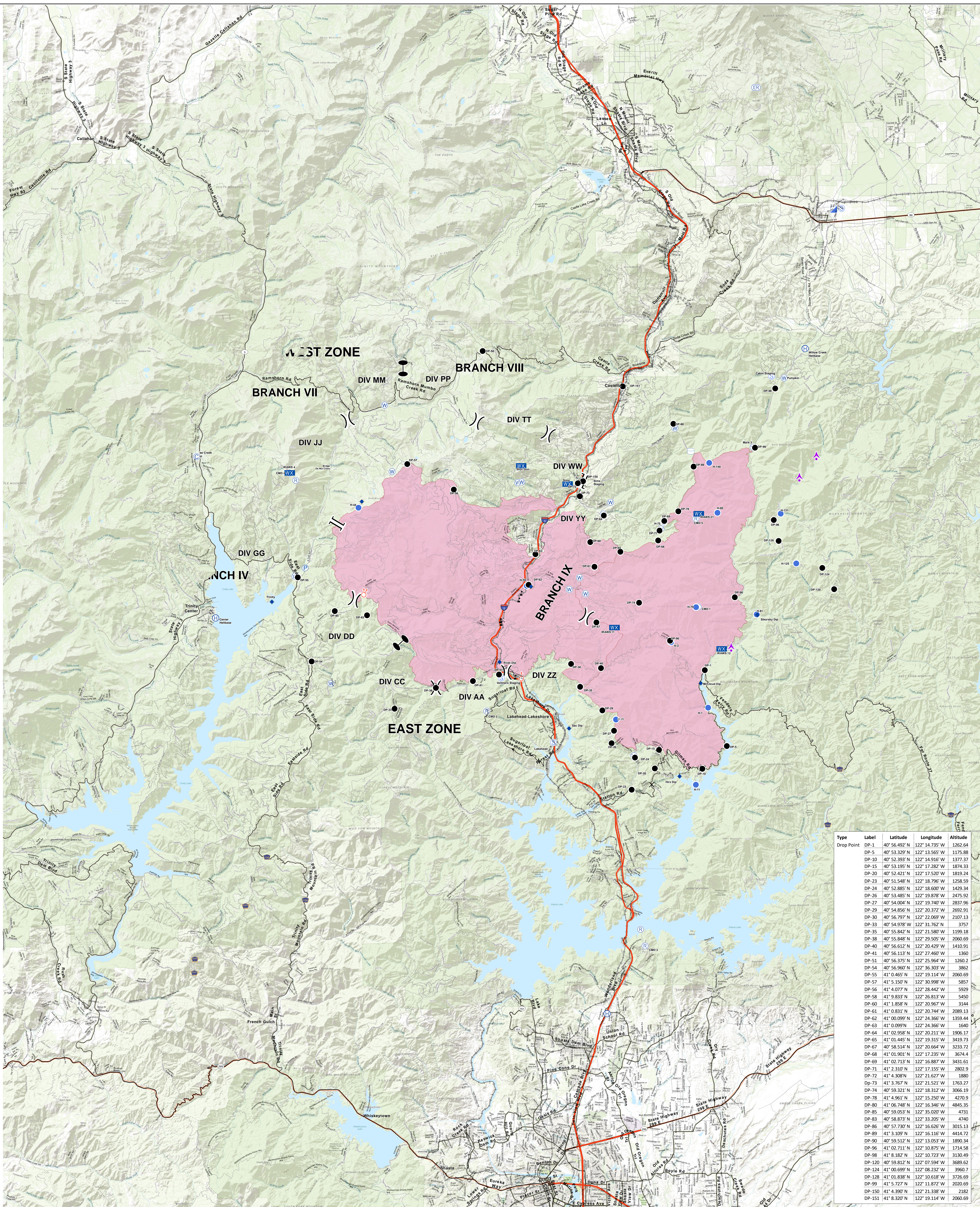
Transportation Map
Delta Fire
 CA-SHF-001444
 09/14/2018 0600

Directions from ICP to Coffee Creek Camp

Depart CA-89 toward Modoc Ave - 9.3 mi
 Take ramp right for I-5 North toward Portland - 14.0 mi, 12 min
 At exit 751, take ramp right toward Edgewood/Gazelle/Stewart Springs Rd - 0.2 mi
 Turn left toward Old Highway 99 S - 0.2 mi
 Turn right onto Old Highway 99 S - 7.3 mi
 Turn left onto Gazelle Callahan Rd - 24.9 mi, 27 min
 Turn left onto CA-3 / S CA-3 - 23.6 mi, 26 min
 Turn right onto Coffee Creek Rd

Type	Label	Latitude	Longitude	Altitude
Helibase	Mountain Gate #18	40° 41.257' N	122° 30.246' W	7750
Helibase	Willow Creek #18	41° 09.827' N	122° 09.068' W	7750
Helibase	Center #18	40° 58.827' N	122° 45.068' W	7750

Type	Label	Latitude	Longitude	Altitude
Helipoint	H-1	40° 54.932' N	122° 14.568' W	1535
Helipoint	H-3	40° 57.637' N	122° 16.575' W	2968
Helipoint	H-13	40° 55.733' N	122° 15.733' W	1387
Helipoint	H-28	40° 54.837' N	122° 19.637' W	3336
Helipoint	H-44	40° 57.347' N	122° 18.637' W	1324
Helipoint	H-59	41° 00.000' N	122° 24.000' W	1302
Helipoint	H-75	41° 02.660' N	122° 16.900' W	3276
Helipoint	H-79	40° 59.133' N	122° 15.933' W	4632
Helipoint	H-81	40° 58.789' N	122° 11.855' W	1306
Helipoint	H-85	41° 03.000' N	122° 19.900' W	4266
Helipoint	H-125	41° 08.800' N	122° 08.800' W	3609
Helipoint	H-131	41° 03.977' N	122° 10.489' W	1750
Helipoint	H-140	41° 05.208' N	122° 14.388' W	4293



Type	Label	Latitude	Longitude	Altitude
Drop Point	DP-1	40° 56.492' N	122° 14.735' W	1262.64
Drop Point	DP-5	40° 53.329' N	122° 13.565' W	1175.88
Drop Point	DP-10	40° 52.393' N	122° 14.916' W	1377.37
Drop Point	DP-15	40° 53.195' N	122° 17.282' W	1874.33
Drop Point	DP-20	40° 52.421' N	122° 17.520' W	1819.24
Drop Point	DP-23	40° 51.548' N	122° 18.796' W	1258.59
Drop Point	DP-24	40° 52.885' N	122° 18.600' W	1429.34
Drop Point	DP-26	40° 53.485' N	122° 19.878' W	2475.92
Drop Point	DP-27	40° 54.004' N	122° 19.740' W	2837.96
Drop Point	DP-29	40° 54.856' N	122° 20.372' W	2692.91
Drop Point	DP-30	40° 56.797' N	122° 22.069' W	2107.13
Drop Point	DP-33	40° 54.978' W	122° 31.762' N	3757
Drop Point	DP-35	40° 55.842' N	122° 21.580' W	1199.18
Drop Point	DP-38	40° 55.848' N	122° 29.505' W	2060.69
Drop Point	DP-40	40° 56.612' N	122° 20.429' W	1410.91
Drop Point	DP-41	40° 56.113' N	122° 27.460' W	1360
Drop Point	DP-51	40° 56.375' N	122° 25.964' W	1260.2
Drop Point	DP-54	40° 56.900' N	122° 36.303' W	3862
Drop Point	DP-55	41° 0.465' N	122° 19.114' W	2060.69
Drop Point	DP-57	41° 5.150' N	122° 30.998' W	5857
Drop Point	DP-56	41° 4.077' N	122° 28.442' W	5929
Drop Point	DP-58	41° 9.833' N	122° 26.813' W	5450
Drop Point	DP-61	41° 1.858' N	122° 20.967' W	3144
Drop Point	DP-61	41° 0.831' N	122° 20.744' W	2089.13
Drop Point	DP-62	41° 00.099' N	122° 24.365' W	1359.44
Drop Point	DP-63	41° 0.099' N	122° 24.365' W	1640
Drop Point	DP-64	41° 02.958' N	122° 20.211' W	1906.17
Drop Point	DP-65	41° 01.445' N	122° 19.315' W	3419.73
Drop Point	DP-67	40° 58.514' N	122° 20.664' W	3233.72
Drop Point	DP-68	41° 01.901' N	122° 17.235' W	3674.4
Drop Point	DP-69	41° 02.713' N	122° 16.887' W	3431.61
Drop Point	DP-71	41° 2.310' N	122° 17.155' W	2802.9
Drop Point	DP-72	41° 4.308' N	122° 21.627' W	1880
Drop Point	DP-73	41° 3.767' N	122° 21.521' W	1763.27
Drop Point	DP-74	40° 59.321' N	122° 18.312' W	3066.19
Drop Point	DP-78	41° 4.961' N	122° 15.250' W	4270.9
Drop Point	DP-80	41° 06.748' N	122° 16.346' W	4845.35
Drop Point	DP-85	40° 59.053' N	122° 35.020' W	4731
Drop Point	DP-83	40° 58.873' N	122° 33.205' W	4740
Drop Point	DP-86	40° 57.730' N	122° 16.626' W	3015.13
Drop Point	DP-89	41° 3.109' N	122° 16.116' W	4414.72
Drop Point	DP-90	40° 59.512' N	122° 13.053' W	1890.34
Drop Point	DP-96	41° 02.711' N	122° 10.875' W	1714.58
Drop Point	DP-98	41° 8.182' N	122° 10.723' W	3130.49
Drop Point	DP-120	40° 59.812' N	122° 07.594' W	3689.62
Drop Point	DP-124	41° 00.699' N	122° 08.232' W	3960.7
Drop Point	DP-128	41° 01.838' N	122° 10.618' W	3726.69
Drop Point	DP-99	41° 5.727' N	122° 11.872' W	2020.69
Drop Point	DP-150	41° 4.390' N	122° 21.338' W	2182
Drop Point	DP-151	41° 8.320' N	122° 19.114' W	2060.69

Transportation Map
Delta Fire
 CA-SHF-001444
 09/14/2018 0600

Directions from ICP to Coffee Creek Camp

Depart CA-89 toward Modoc Ave - 9.3 mi
 Take ramp right for I-5 North toward Portland - 14.0 mi, 12 min
 At exit 751, take ramp right toward Edgewood/Gazelle/Stewart Springs Rd - 0.2 mi
 Turn left toward Old Highway 99 S - 0.2 mi
 Turn right onto Old Highway 99 S - 7.3 mi
 Turn left onto Gazelle Callahan Rd - 24.9 mi, 27 min
 Turn left onto CA-3 / S CA-3 - 23.6 mi, 26 min
 Turn right onto Coffee Creek Rd

Type	Label	Latitude	Longitude	Altitude
Helibase	Mountain Gate #18	40° 41.257' N	122° 30.246' W	7750
Helibase	Willow Creek #18	41° 09.827' N	122° 09.068' W	7750
Helibase	Center #18	40° 58.927' N	122° 45.067' W	7750

Type	Label	Latitude	Longitude	Altitude
Helipoint	H-1	40° 54.932' N	122° 14.568' W	1535
Helipoint	H-3	40° 57.637' N	122° 16.575' W	2968
Helipoint	H-13	40° 55.733' N	122° 15.738' W	1387
Helipoint	H-28	40° 54.837' N	122° 19.630' W	3336
Helipoint	H-44	40° 3.387' N	122° 38.887' W	1324
Helipoint	H-75	41° 00.905' N	122° 24.867' W	1302
Helipoint	H-75	41° 02.660' N	122° 16.907' W	3276
Helipoint	H-79	40° 59.133' N	122° 15.937' W	4632
Helipoint	H-81	40° 58.789' N	122° 11.855' W	1306
Helipoint	H-85	41° 03.057' N	122° 19.962' W	4266
Helipoint	H-125	41° 00.865' N	122° 09.862' W	3669
Helipoint	H-131	41° 03.977' N	122° 10.489' W	1750
Helipoint	H-140	41° 05.208' N	122° 14.389' W	4293