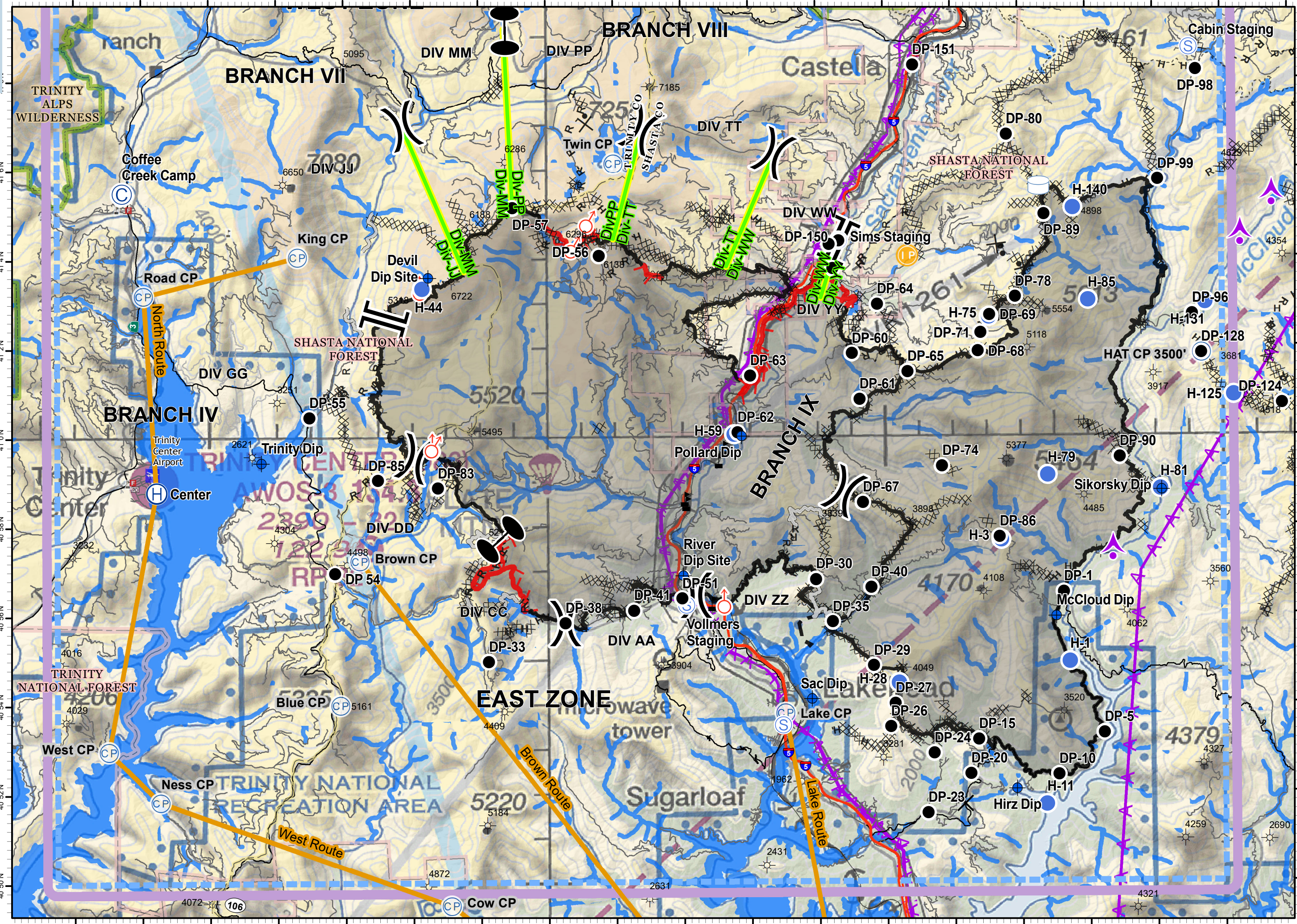
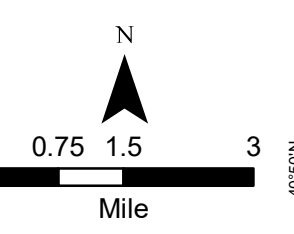


# Pilot Map Delta Fire

CA-SHF-001444  
September 16, 2018  
0600



- Fire Retardant Avoidance Terrestrial
- Fire Retardant Avoidance R05 Hydro
- Aerial Division Delineator
- TFR
- Transmission Lines
- CP Checkpoints
- IP Insertion Points
- Checkpoint Routes
- Aerial Hazard
- Dip Site
- Drop Point
- Helibase
- Helispot
- Pump
- Spot Fire
- Staging Area
- Value at Risk
- Division Break
- Branch Break
- Zone Break
- Uncontrolled Fire Edge
- Containment Line
- Completed Dozer Line
- H - Completed Hand Line
- R - Road as Completed Line
- Access or Improved Road
- Proposed Dozer Line
- Planned Secondary Line
- Wildfire Daily Fire Perimeter



Type	Label	Latitude	Longitude	Altitude
Aerial Hazard	Aerial Hazard	40° 57.352' N	122° 13.276' W	1267
	Aerial Hazard	41° 24.390' N	122° 24 23.4' W	2080
	Aerial Hazard	41° 05.280' N	122° 08.880' W	1880
	Aerial Hazard	41° 04.398' N	122° 09.442' W	1840

Type	Label	Latitude	Longitude	Altitude
Helibase	Mountain Gate HLB	40° 42.257' N	122° 20.246' W	
	Willow Creek HLB	41° 09.822' N	122° 09.058' W	2720
	Center HLB	40° 58.783' N	122° 41.569' W	

Type	Label	Latitude	Longitude	Altitude
Helispot	H-1	40° 54.932' N	122° 14.568' W	1155
	H-3	40° 57.670' N	122° 16.575' W	2968
	H-11	40° 51.733' N	122° 15.278' W	1087
	H-28	40° 54.470' N	122° 19.630' W	3236
	H-44	40° 3.345' N	122° 33.690' W	1224
	H-59	41° 00.056' N	122° 24.467' W	1359
	H-75	41° 02.666' N	122° 16.905' W	3276
	H-79	40° 59.115' N	122° 15.187' W	4672
	H-81	40° 58.793' N	122° 11.855' W	1306
	H-85	41° 03.032' N	122° 13.962' W	4266
	H-125	41° 00.895' N	122° 09.662' W	3659
	H-131	41° 02.972' N	122° 10.489' W	1750
	H-140	41° 05.108' N	122° 14.393' W	4793

Type	Label	Latitude	Longitude
Check Point	Fork CP	41° 1.0451' N	122° 6.6870' W
	Hat CP	41° 01.838' N	122° 10.618' W
	Holiday CP	40° 47.917' N	122° 18.381' W
	Jones CP	40° 48.870' N	122° 13.970' W
	Lake CP	40° 53.818' N	122° 23.006' W
	Brown CP	40° 57.236' N	122° 35.569' W
	Blue CP	40° 54.010' N	122° 36.140' W
	King CP	41° 4.061' N	122° 37.368' W
	Road CP	41° 3.196' N	122° 41.938' W
	Ness CP	40° 51.829' N	122° 41.463' W
	West CP	40° 52.970' N	122° 42.984' W
	Cow CP	40° 49.505' N	122° 32.881' W
	Twin CP	40° 06.143' N	122° 28.01' W

Type	Label	Latitude	Longitude	Altitude
Dip Site	Hirz Dip	40° 52.085' N	122° 16.167' W	1118.59717
	McCloud Dip	40° 55.953' N	122° 14.963' W	1102.60449
	Pollard Dip	41° 0.020' N	122° 24.245' W	1360.72156
	Sac Dip	40° 54.115' N	122° 22.206' W	1109.40479
	River Dip	40° 56.895' N	122° 25.992' W	1160
	Sikousky Dip	41° 58.773' N	122° 11.823' W	1305.5509
	Devil's Dip	40° 56.895' N	122° 25.992' W	1140
	Trinity Dip	40° 59.45' N	122° 38.47' W	2371

Type	Label	Latitude	Longitude	Altitude
Drop Point	DP-1	40° 56.492' N	122° 14.735' W	1262.64
	DP-5	40° 53.329' N	122° 13.565' W	1175.88
	DP-10	40° 52.393' N	122° 14.916' W	1377.37
	DP-15	40° 53.195' N	122° 17.282' W	1874.33
	DP-20	40° 52.421' N	122° 17.520' W	1819.24
	DP-23	40° 51.548' N	122° 18.796' W	1258.59
	DP-24	40° 52.885' N	122° 18.600' W	1429.34
	DP-26	40° 53.485' N	122° 19.878' W	2475.92
	DP-27	40° 54.004' N	122° 19.740' W	2837.96
	DP-29	40° 54.856' N	122° 20.372' W	2692.91
	DP-30	40° 56.797' N	122° 22.069' W	2107.13
	DP-33	40° 54.978' W	122° 31.762' N	3757
	DP-35	40° 55.842' N	122° 21.580' W	1199.18
	DP-38	40° 55.848' N	122° 29.505' W	2060.69
	DP-40	40° 56.612' N	122° 20.429' W	1410.91
	DP-41	40° 56.113' N	122° 27.460' W	1360
	DP-51	40° 56.375' N	122° 25.964' W	1260.2
	DP-54	40° 56.960' N	122° 36.303' W	3862
	DP-55	41° 0.465' N	122° 19.114' W	2060.69
	DP-57	41° 5.150' N	122° 30.998' W	5857
	DP-56	41° 4.077' N	122° 28.442' W	5929
	DP-58	41° 9.833' N	122° 26.813' W	5450
	DP-60	41° 1.858' N	122° 20.967' W	3144
	DP-61	41° 0.831' N	122° 20.744' W	2089.13
	DP-62	41° 00.099' N	122° 24.366' W	1359.44
	DP-63	41° 0.099' N	122° 24.366' W	1640
	DP-64	41° 02.958' N	122° 20.211' W	1906.17
	DP-65	41° 01.445' N	122° 19.315' W	3419.73
	DP-67	40° 58.514' N	122° 20.664' W	3233.72
	DP-68	41° 01.901' N	122° 17.235' W	3674.4
	DP-69	41° 02.713' N	122° 16.887' W	3431.61
DP-71	41° 2.310' N	122° 17.155' W	2802.9	
DP-72	41° 4.308' N	122° 21.627' W	1880	
DP-73	41° 3.767' N	122° 21.521' W	1763.27	
DP-74	40° 59.321' N	122° 18.312' W	3066.19	
DP-78	41° 4.961' N	122° 15.250' W	4270.9	
DP-80	41° 06.748' N	122° 16.346' W	4845.35	
DP-85	40° 59.053' N	122° 35.020' W	4731	
DP-83	40° 58.873' N	122° 33.205' W	4740	
DP-86	40° 57.730' N	122° 16.626' W	3015.13	
DP-89	41° 3.109' N	122° 16.116' W	4414.72	
DP-90	40° 59.512' N	122° 13.053' W	1890.34	
DP-96	41° 02.711' N	122° 10.875' W	1714.58	
DP-98	41° 8.182' N	122° 10.723' W	3130.49	
DP-99	41° 5.727' N	122° 11.872' W	2020.69	
DP-120	40° 59.812' N	122° 07.594' W	3689.62	
DP-124	41° 00.699' N	122° 08.232' W	3960.7	
DP-128	41° 01.838' N	122° 10.618' W	3726.69	
DP-150	41° 4.390' N	122° 21.338' W	2182	
DP-151	41° 8.320' N	122° 19.114' W	2060.69	