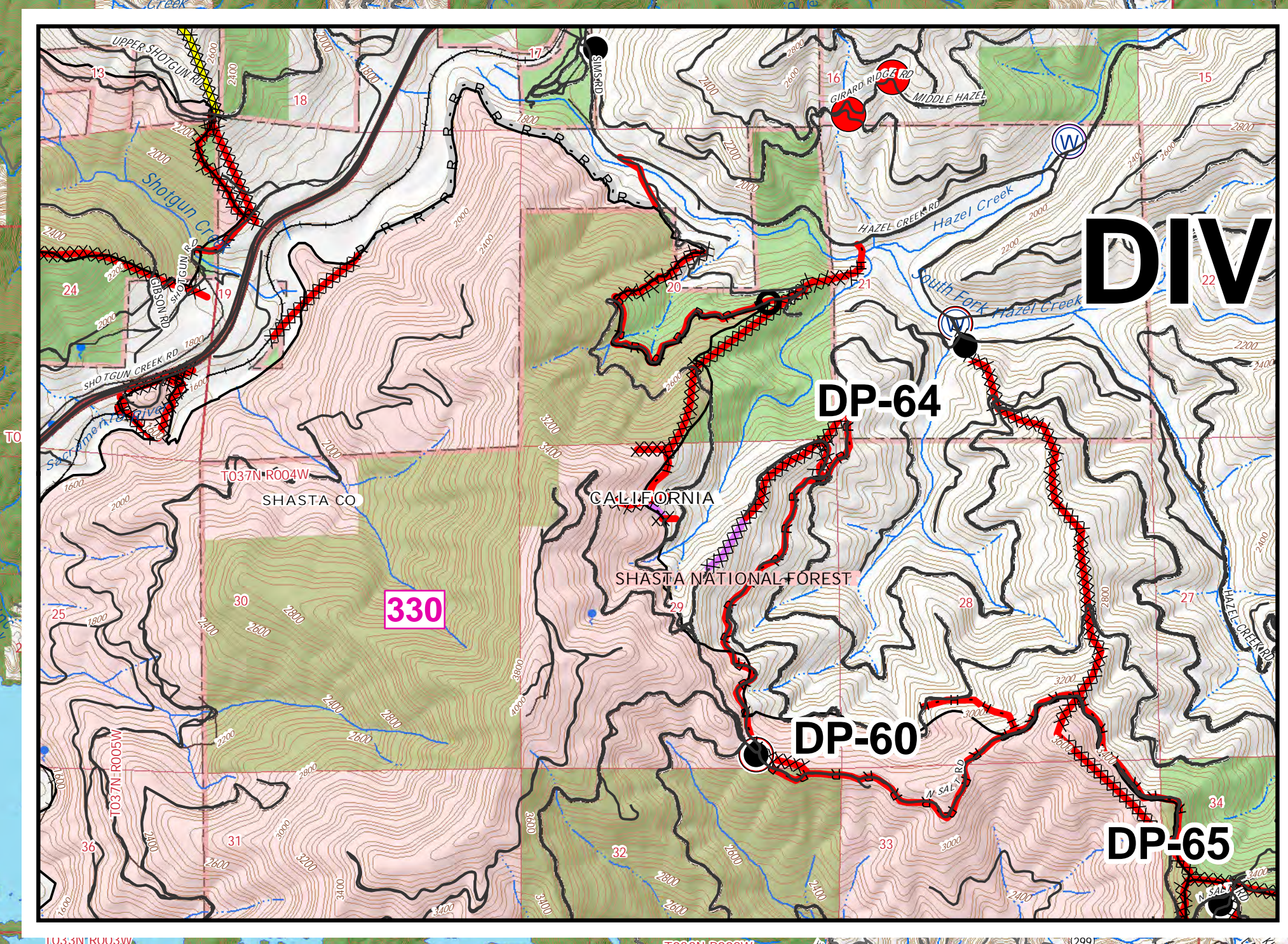
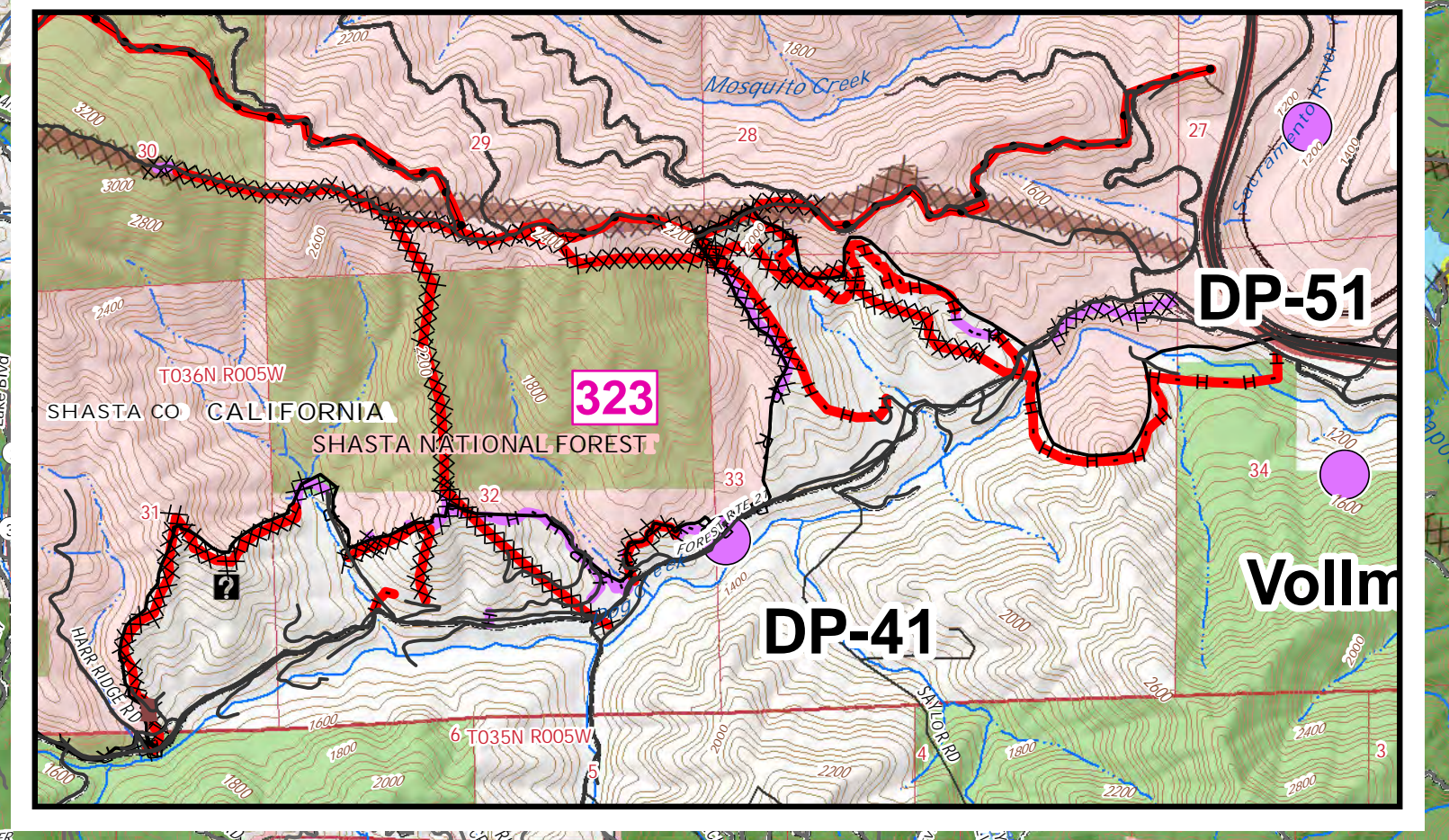


| Repair Status by Feature (miles) |           |        |                                  | Percent of Work for Each Fire |           |         |         |
|----------------------------------|-----------|--------|----------------------------------|-------------------------------|-----------|---------|---------|
| Completed                        | Inspected | Delta  | Hirz                             | Completed                     | Inspected | Delta   | Hirz    |
| 22.83                            | 7.33      | 30.16  | 30.16                            | 9.45%                         | 2.67%     | 5.83%   | 5.83%   |
| 0.78                             | 0.78      | 0.78   | 0.78                             | 0.31%                         | 0.00%     | 0.15%   | 0.15%   |
| 2.36                             | 2.36      | 2.36   | 2.36                             | 0.94%                         | 0.00%     | 0.40%   | 0.40%   |
| 2.61                             | 2.61      | 2.61   | 2.61                             | 1.04%                         | 0.00%     | 0.52%   | 0.52%   |
| 6.26                             | 7.33      | 13.60  | 13.60                            | 2.39%                         | 2.67%     | 2.64%   | 2.64%   |
| 30.81                            | 30.81     | 30.81  | 30.81                            | 4.47%                         | 0.00%     | 2.10%   | 2.10%   |
| 166.80                           | 80.01     | 156.81 | 27.64%                           | 32.48%                        | 30.33%    | 30.33%  | 30.33%  |
| 1.25                             | 1.25      | 1.25   | <mult>                           | 0.00%                         | 0.00%     | 0.24%   | 0.24%   |
| 13.66                            | 21.71     | 42.38  | Completed - Inspected            | 5.51%                         | 10.15%    | 6.02%   | 6.02%   |
| 4.68                             | 4.68      | 4.68   | Completed - Ready for Inspection | 1.71%                         | 0.91%     | 0.91%   | 0.91%   |
| 6.07                             | 9.91      | 15.98  | In Progress                      | 2.51%                         | 3.62%     | 3.10%   | 3.10%   |
| 0.61                             | 0.61      | 0.61   | No Repair Needed                 | 0.23%                         | 0.00%     | 0.12%   | 0.12%   |
| 45.17                            | 44.75     | 89.92  | Repair Needed                    | 18.69%                        | 16.33%    | 17.44%  | 17.44%  |
| 1.29                             | 0.71      | 1.99   | Unknown                          | 0.33%                         | 0.26%     | 0.39%   | 0.39%   |
| 15.52                            | 16.23     | 31.75  | Completed Hand Line              | 6.42%                         | 5.92%     | 6.16%   | 6.16%   |
| 1.91                             | 0.09      | 0.90   | <mult>                           | 0.00%                         | 0.00%     | 0.00%   | 0.00%   |
| 0.58                             | 1.86      | 2.44   | Completed - Inspected            | 0.21%                         | 2.90%     | 0.49%   | 0.49%   |
| 0.26                             | 0.37      | 0.63   | Completed - Ready for Inspection | 0.10%                         | 0.13%     | 0.08%   | 0.08%   |
| 7.42                             | 1.86      | 9.28   | In Progress                      | 2.67%                         | 1.81%     | 2.42%   | 2.42%   |
| 5.35                             | 0.22      | 5.57   | No Repair Needed                 | 0.11%                         | 0.13%     | 0.12%   | 0.12%   |
| 73.22                            | 59.45     | 132.67 | Repair Needed                    | 3.07%                         | 1.81%     | 2.42%   | 2.42%   |
| 46.83                            | 46.83     | 46.83  | Unknown                          | 2.21%                         | 0.08%     | 1.08%   | 1.08%   |
| 73.22                            | 11.62     | 84.84  | Completed Line                   | 30.30%                        | 21.69%    | 25.72%  | 25.72%  |
| 42.17                            | 42.17     | 42.17  | <mult>                           | 0.00%                         | 0.00%     | 0.00%   | 0.00%   |
| 42.17                            | 42.17     | 42.17  | No Repair Needed                 | 30.30%                        | 4.61%     | 16.65%  | 16.65%  |
| 20.55                            | 41.92     | 62.47  | Management Action Point          | 0.00%                         | 15.39%    | 8.18%   | 8.18%   |
| 0.17                             | 1.48      | 1.65   | No Repair Needed                 | 0.00%                         | 0.24%     | 0.29%   | 0.29%   |
| 35.14                            | 35.14     | 35.14  | Completed - Inspected            | 8.00%                         | 15.29%    | 12.13%  | 12.13%  |
| 0.17                             | 0.17      | 0.17   | In Progress                      | 0.00%                         | 12.82%    | 6.81%   | 6.81%   |
| 20.10                            | 5.29      | 25.39  | Other - See Comments             | 0.07%                         | 0.00%     | 0.10%   | 0.10%   |
| 0.26                             | 0.26      | 0.26   | Repair Needed                    | 8.82%                         | 1.93%     | 4.92%   | 4.92%   |
| 1.44                             | 3.30      | 4.74   | Other - See Comments             | 0.11%                         | 0.00%     | 0.00%   | 0.00%   |
| 1.44                             | 2.30      | 3.74   | Planned Fire Line                | 0.00%                         | 0.84%     | 0.72%   | 0.72%   |
| 0.39                             | 0.39      | 0.39   | Unknown                          | 0.00%                         | 0.00%     | 0.00%   | 0.00%   |
| 0.39                             | 0.39      | 0.39   | Completed Secondary Line         | 0.00%                         | 0.00%     | 0.00%   | 0.00%   |
| 0.39                             | 0.39      | 0.39   | No Repair Needed                 | 0.00%                         | 0.00%     | 0.00%   | 0.00%   |
| 0.39                             | 0.39      | 0.39   | Proposed Dozer Line              | 0.00%                         | 0.00%     | 0.00%   | 0.00%   |
| 0.39                             | 0.39      | 0.39   | Repair Needed                    | 0.18%                         | 0.00%     | 0.07%   | 0.07%   |
| 0.39                             | 0.39      | 0.39   | Unknown                          | 0.00%                         | 0.30%     | 0.19%   | 0.19%   |
| 34.81                            | 14.53     | 49.34  | Road as Completed Line           | 14.40%                        | 5.30%     | 9.57%   | 9.57%   |
| 1.81                             | 1.81      | 1.81   | <mult>                           | 0.00%                         | 0.66%     | 0.35%   | 0.35%   |
| 0.59                             | 0.59      | 0.59   | Completed - Inspected            | 0.21%                         | 3.25%     | 1.84%   | 1.84%   |
| 0.14                             | 0.14      | 0.14   | In Progress                      | 0.00%                         | 0.00%     | 0.00%   | 0.00%   |
| 5.26                             | 5.26      | 5.26   | No Repair Needed                 | 2.18%                         | 0.00%     | 1.02%   | 1.02%   |
| 3.84                             | 3.84      | 3.84   | Other - See Comments             | 1.39%                         | 0.00%     | 0.65%   | 0.65%   |
| 17.67                            | 3.29      | 20.96  | Repair Needed                    | 7.31%                         | 1.20%     | 4.08%   | 4.08%   |
| 7.81                             | 0.52      | 8.33   | Unknown                          | 2.13%                         | 0.23%     | 1.62%   | 1.62%   |
| 6.11                             | 6.11      | 6.11   | Uncontrolled Fire Edge           | 2.53%                         | 0.00%     | 1.18%   | 1.18%   |
| 6.11                             | 6.11      | 6.11   | <mult>                           | 2.53%                         | 0.00%     | 1.18%   | 1.18%   |
| 241.48                           | 274.06    | 515.54 | Grand Total                      | 100.00%                       | 100.00%   | 100.00% | 100.00% |



**Suppression Repair**  
**Delta - Hirz Fire**  
 CA-SHF-001444 - CA-SHF-001223  
 09/20/2018

**Legend**

- Uncontrolled Fire Edge
- Completed Line
- Completed Dozer Line
- USDA FOREST SERVICE
- Completed Hand Line
- Road as Completed Line
- Other/Road
- Bridge
- Culverts
- Equipment Found
- Fence
- Gates
- Other
- Other Large Dozer Push (parking area, etc.)
- Retardant Track or Point
- Road Repair
- Stream Crossing
- Trails
- Repair Needed
- Road Repair
- Fuels Removal
- Other
- Completed - Ready for Inspection
- In Progress
- Completed - Inspected
- Unknown
- Other - See Comments

