

Fire Behavior

FS Pro 7 Day

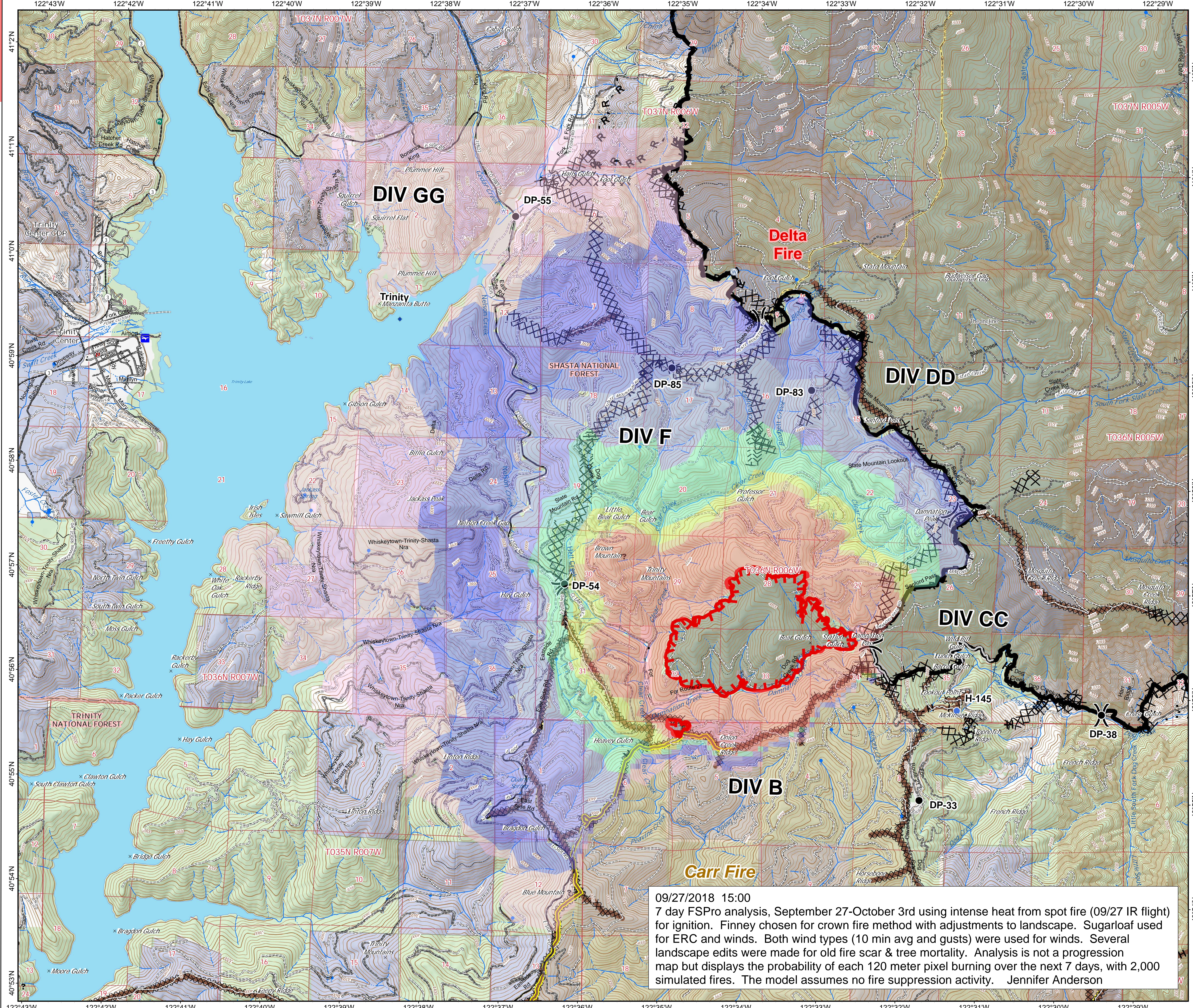
Delta

CA-SHF-001444

09/27/2018



- FS Pro 7 Day Fire Behavior**
- <.2% of Fires
 - .2-4.9% of Fires
 - 5-29% of Fires
 - 20-39% of Fires
 - 40-59% of Fires
 - 60-79% of Fires
 - 80-100% of Fires
- Dip Site
 - Drop Point
 - Helispot
 - Pump
 - Spot Fire
 - Water Source
 - Unknown
- Division Break**
- Uncontrolled Fire Edge
 - Containment Line
 - Completed Dozer Line
 - Completed Hand Line
 - Road as Completed Line
 - Access or Improved Road
 - Daily Fire Perimeter
 - Past Completed Line
 - Past Completed Dozer Line
 - Past Completed Hand Line
 - USDA Forest Service
 - Private Timberlands



09/27/2018 15:00
 7 day FSPro analysis, September 27-October 3rd using intense heat from spot fire (09/27 IR flight) for ignition. Finney chosen for crown fire method with adjustments to landscape. Sugarloaf used for ERC and winds. Both wind types (10 min avg and gusts) were used for winds. Several landscape edits were made for old fire scar & tree mortality. Analysis is not a progression map but displays the probability of each 120 meter pixel burning over the next 7 days, with 2,000 simulated fires. The model assumes no fire suppression activity. Jennifer Anderson

