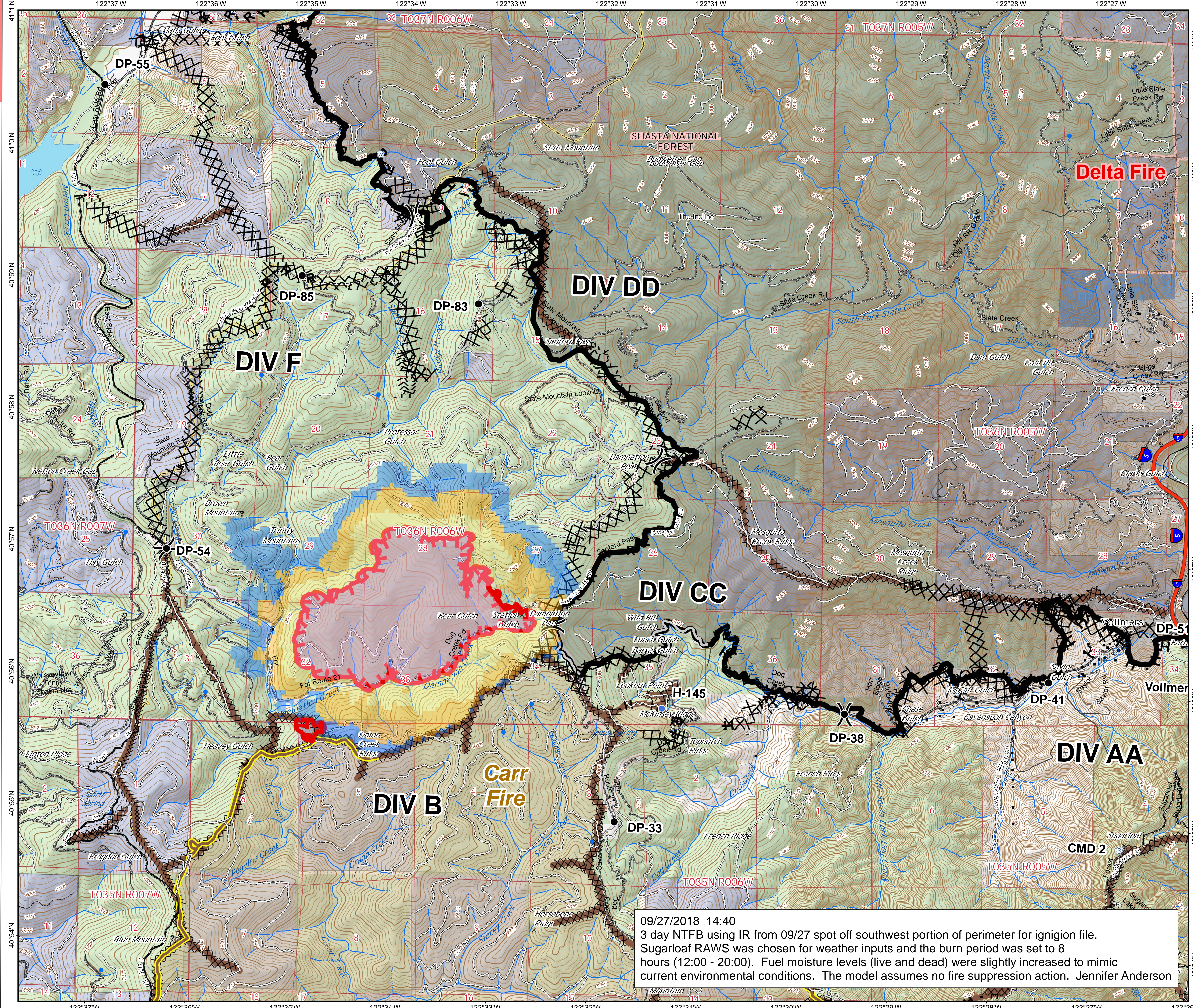


Fire Behavior Near Term 3 Day Delta CA-SHF-001444 09/28/2018



- Near Term Fire Behavior 3-Day**
- Burn Period**
- Ignition
 - Day 1
 - Day 2
 - Day 3
- Legend:**
- Drop Point
 - Helispot
 - ⊕ Pump
 - ⊕ Repeater
 - ⊕ Spot Fire
 - ⊕ Water Source
 - ⊕ Unknown
 -) (Division Break
 - Uncontrolled Fire Edge
 - Containment Line
 - XXXX Completed Dozer Line
 - H · H · Completed Hand Line
 - R · R · Road as Completed Line
 - Access or Improved Road
 - Daily Fire Perimeter
 - Past Completed Line
 - XXXX Past Completed Dozer Line
 - Past Completed Hand Line
 - USDA Forest Service
 - State Land
 - Private Timberlands



09/27/2018 14:40
 3 day NTFB using IR from 09/27 spot off southwest portion of perimeter for ignition file. Sugarloaf RAWS was chosen for weather inputs and the burn period was set to 8 hours (12:00 - 20:00). Fuel moisture levels (live and dead) were slightly increased to mimic current environmental conditions. The model assumes no fire suppression action. Jennifer Anderson

