

Seeding & Mulching Map

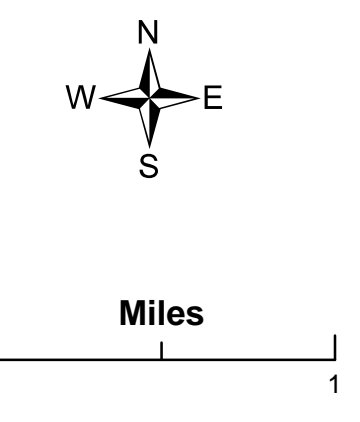
Hirz-Delta Fire

Delta North Page

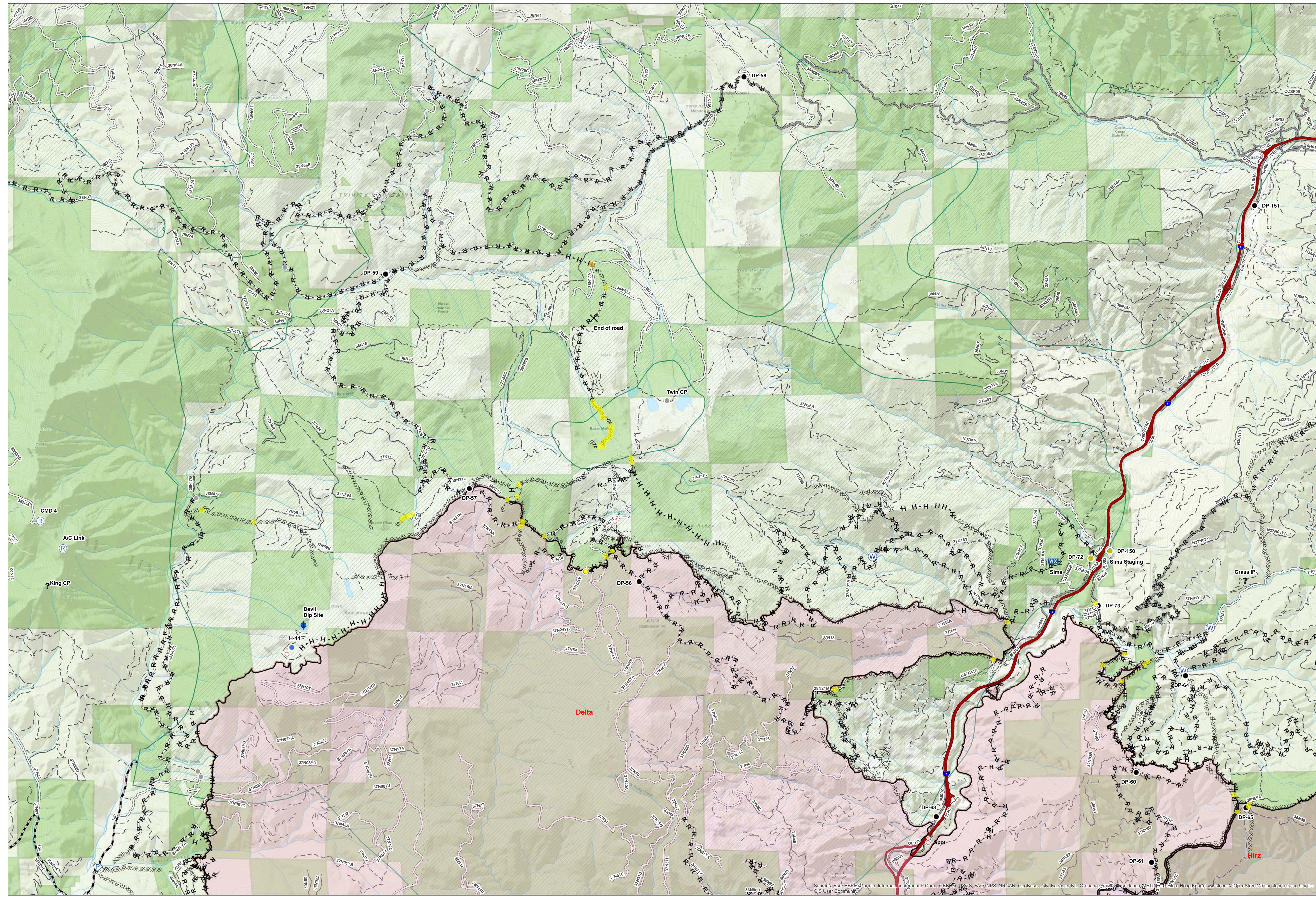
Legend

- Mulch
 - Seed and Mulch
 - Pendote
 - Closure
 - Dip Site
 - Drop Point
 - Gate
 - Helispot
 - Hot Spot
 - Mobile Weather Unit
 - Pump
 - Repeater
 - Spot Fire
 - Staging Area
 - Water Source
 - Water Tank
 - Value at Risk
 - Other
 - Unknown
 - Completed Line
 - Completed Duster Line
 - Completed Hard Line
 - Road as Completed Line
 - Wildfire Daily Fire Perimeter
 - BLM
 - Shasta-Trinity National Forest
- #### Roads
- Highway
 - Paved Road
 - Gravel Road
 - Dirt Road
 - Unclassified Road

Map Page Key



Belinda Lo
11-Oct-2018 @ 22:13
NAD83 UTM Zone 10N



Sources: Esri, HERE, Garmin, Intermap, increment P Corp., GEBCO, USGS, FAO, NPS, NRCAN, GeoBase, IGN, Kadaster NL, Ordnance Survey, Esri Japan, METI, Esri China (Hong Kong), Swisstopo, OpenStreetMap contributors, and the GIS User Community