

Seeding & Mulching Map

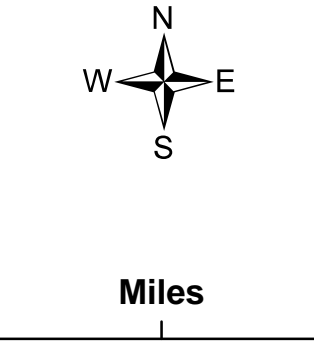
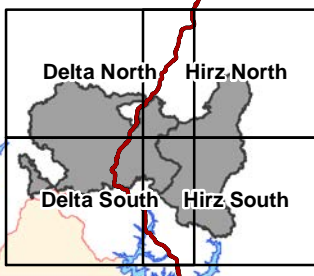
Hirz-Delta Fire

Delta South Page

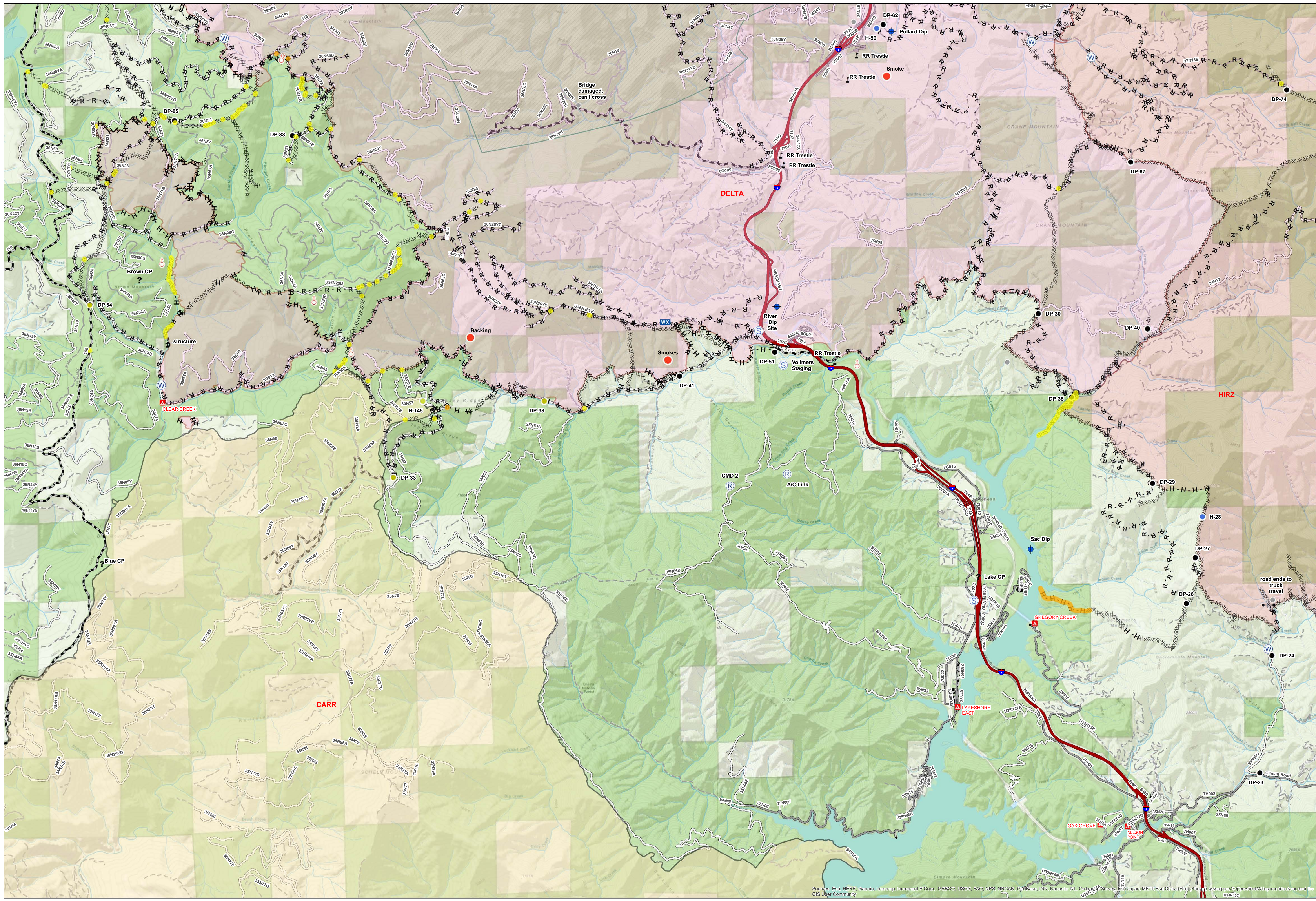
Legend

- Mulch
 - Seed and Mulch
 - Serpentine
 - Camp
 - Closure
 - Dip Site
 - Drop Point
 - Gate
 - Helispot
 - Hot Spot
 - Mobile Weather Unit
 - Pump
 - Repeater
 - Spot Fire
 - Staging Area
 - Water Source
 - Water Tank
 - Value at Risk
 - Other
 - Unknown
 - Completed Dozer Line
 - Completed Hand Line
 - Road as Completed Line
 - Wildfire Daily Fire Perimeter
 - BLM
 - Shasta-Trinity National Forest
- Roads**
- Highway
 - Paved Road
 - Gravel Road
 - Dir Road
 - Unclassified Road

Map Page Key



Belinda Lo
15-Oct-2018 @ 21:08
NAD83 UTM Zone 10N



Sources: Esri, HERE, Garmin, Intermap, increment P Corp., GEBCO, USGS, FAO, NPS, NRCAN, Geobase, IGN, Kadaster NL, Ordnance Survey, Esri Japan, METI, Esri China (Hong Kong), Swisstopo, © OpenStreetMap contributors, and the GIS User Community