

Seeding & Mulching Map

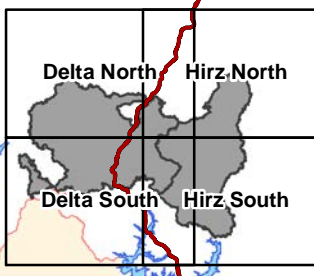
Hirz-Delta Fire

Hirz North Page

Legend

- Mulch
  - Seed and Mulch
  - Serpentine
  - Camp
  - Closure
  - Dip Site
  - Drop Point
  - Gate
  - Helispot
  - Hot Spot
  - Mobile Weather Unit
  - Pump
  - Repeater
  - Spot Fire
  - Staging Area
  - Water Source
  - Water Tank
  - Value at Risk
  - Other
  - Unknown
  - Completed Dozer Line
  - Completed Hand Line
  - Road as Completed Line
  - Wildfire Daily Fire Perimeter
  - BLM
  - Shasta-Trinity National Forest
- Roads**
- Highway
  - Paved Road
  - Gravel Road
  - Dirt Road
  - Unclassified Road

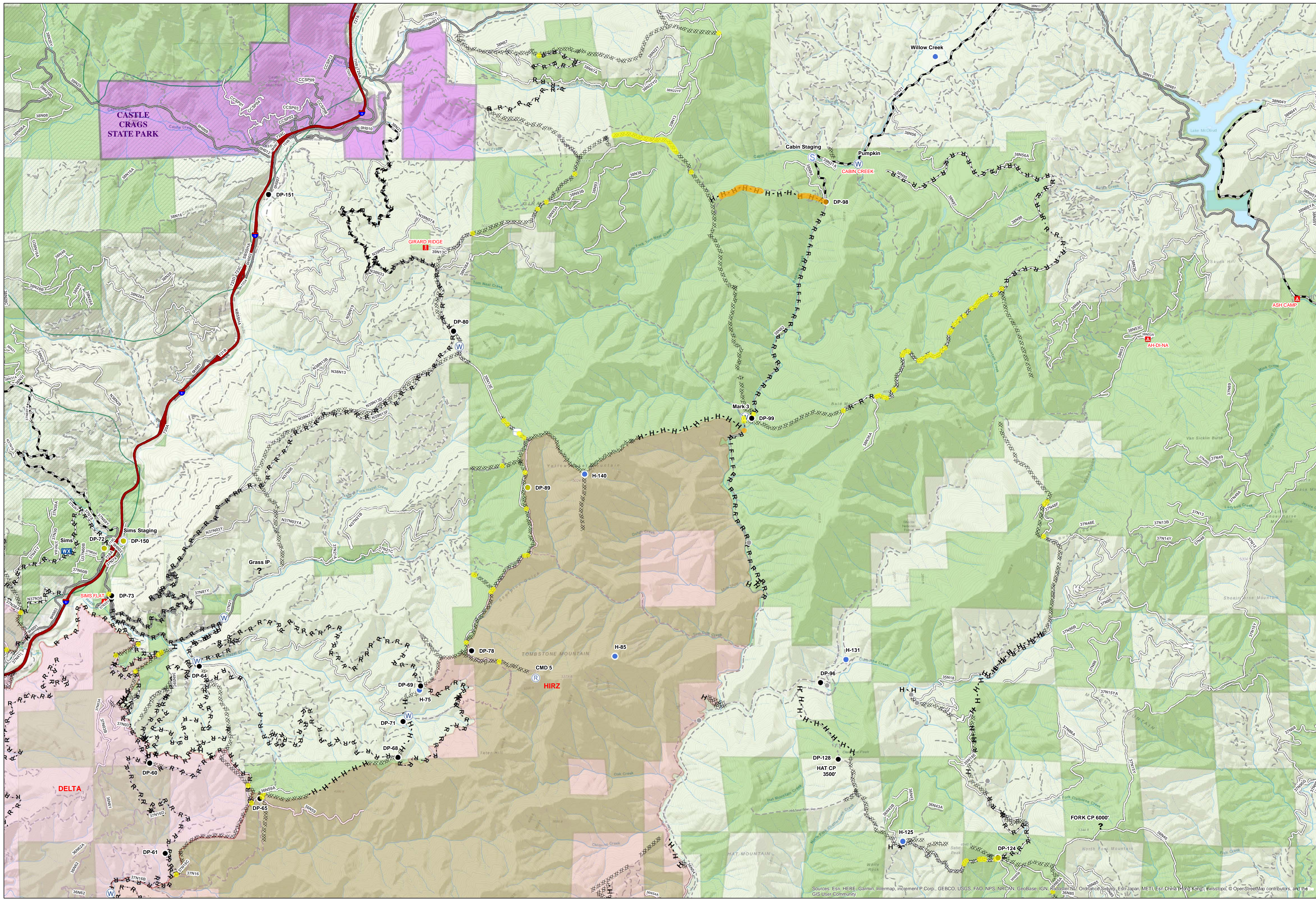
Map Page Key



Miles



Belinda Lo  
15-Oct-2018 @ 21:11  
NAD83 UTM Zone 10N



Sources: Esri, HERE, Garmin, Intermap, increment P Corp., GEBCO, USGS, FAO, NPS, NRCAN, GeoBase, IGN, Kadaster NL, Ordnance Survey, Esri Japan, METI, Esri China (Hong Kong), Swisstopo, © OpenStreetMap contributors, and the GIS User Community