

**Seeding & Mulching Map**

Hirz-Delta Fire

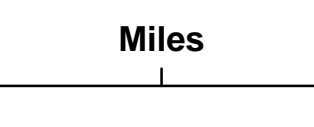
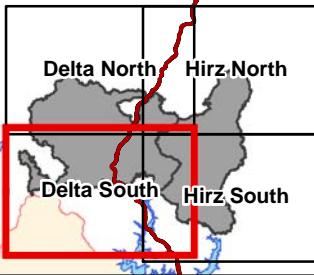
Delta South Page

Operational Period  
October 20, 2018

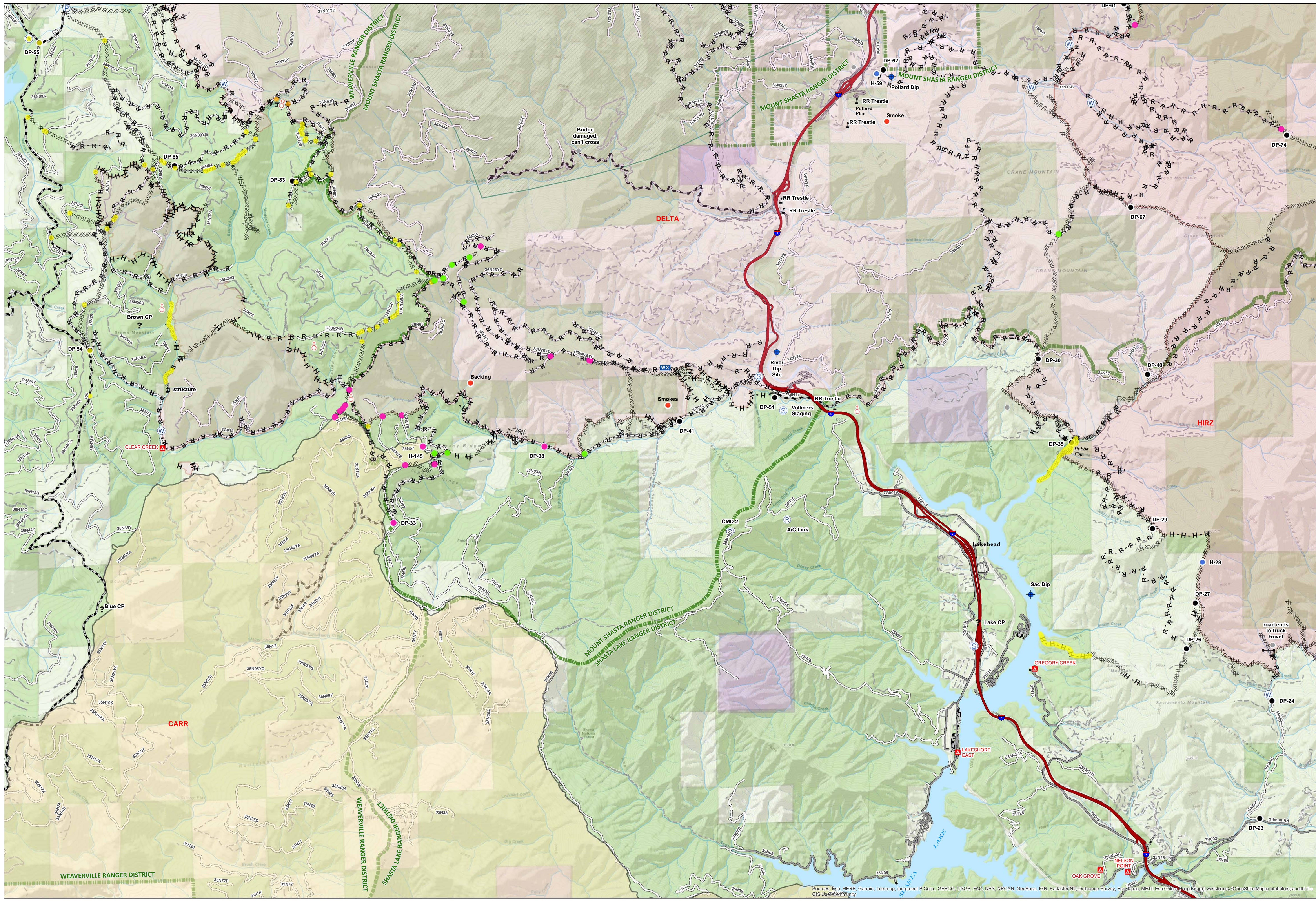
**Legend**

- Treatment Complete
  - Treatment Canceled
  - Mulch
  - Seed and Mulch
  - Serpentine
  - Camp
  - Closure
  - Dip Site
  - Drop Point
  - Gate
  - Hot Spot
  - Hot Spot
  - Mobile Weather Unit
  - Pump
  - Repeater
  - Spot Fire
  - Staging Area
  - Water Source
  - Water Tank
  - Value at Risk
  - Other
  - Unknown
  - Completed Dozer Line
  - Completed Hand Line
  - Road as Completed Line
  - Wildfire Daily Fire Perimeter
  - BLM
  - State
  - Shasta-Trinity National Forest
- Roads**
- Highway
  - Paved Road
  - Gravel Road
  - Dir Road
  - Unclassified Road

**Map Page Key**



Belinda Lo  
20-Oct-2018 @ 00:34  
NAD83 UTM Zone 10N



Sources: Esri, HERE, Garmin, Intermap, increment P Corp., GEBCO, USGS, FAO, NPS, NRCAN, GeoBase, IGN, Kadaster NL, Ordnance Survey, Esri Japan, METI, Esri China (Hong Kong), Swisstopo, OpenStreetMap contributors, and the GIS User Community