

Seeding & Mulching Map

Delta & Hirz Fires

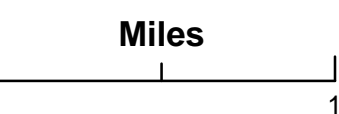
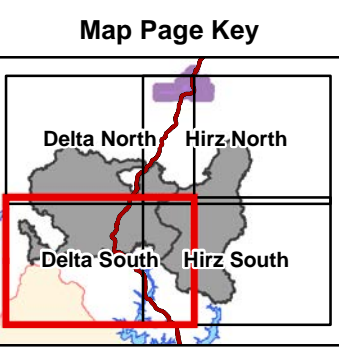
CA-SHF-001444
CA-SHF-001223

Delta South
Page

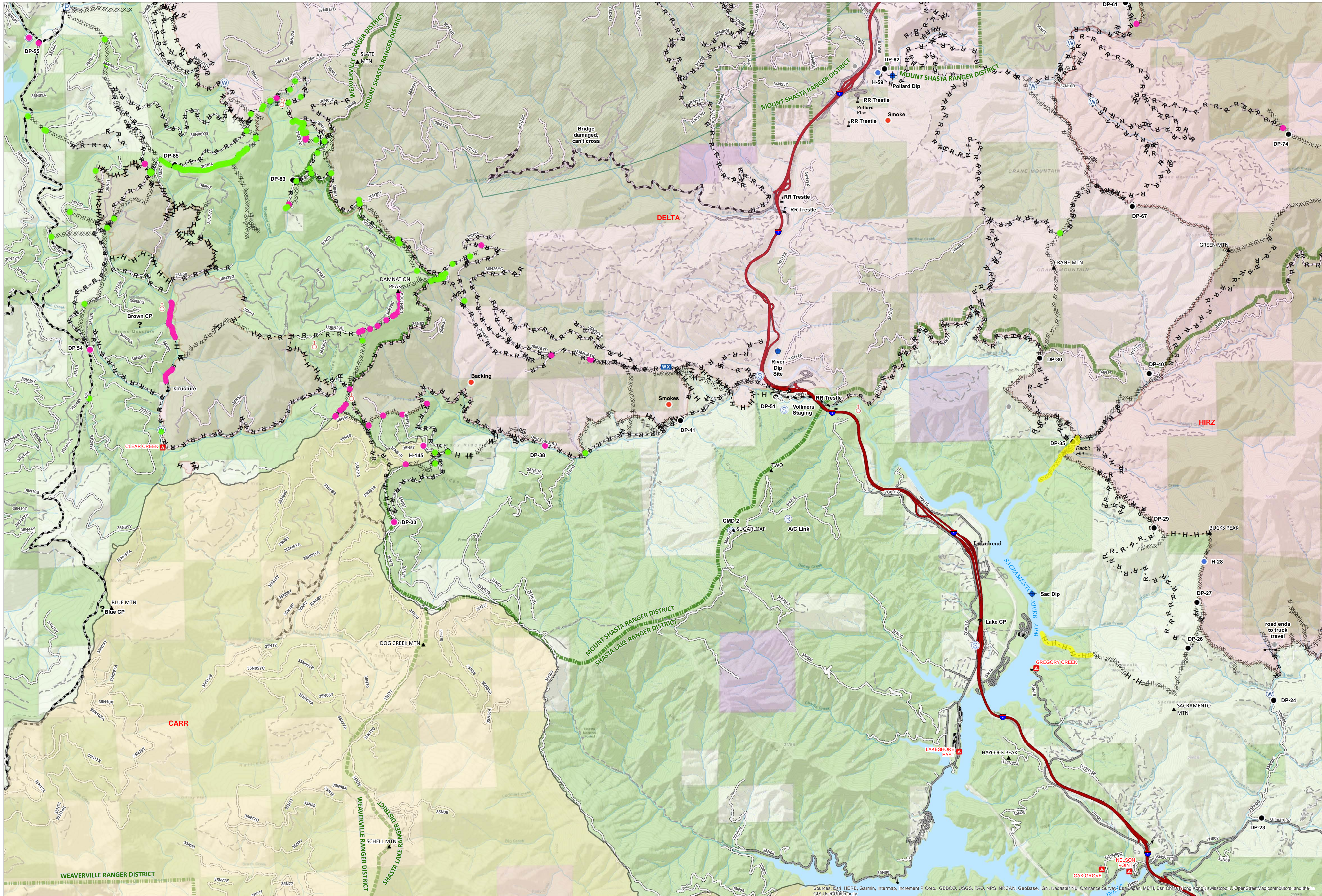
Operational Period
October 23, 2018

Legend

- Treatment Complete
 - Treatment Cancelled
 - Potential Mulch Site
 - Potential Seed & Mulch Site
 - Serpentine
 - Camp
 - Closure
 - Dip Site
 - Drop Point
 - Gate
 - Helispot
 - Hot Spot
 - Mobile Weather Unit
 - Pump
 - Repeater
 - Spot Fire
 - Staging Area
 - Water Source
 - Water Tank
 - Value at Risk
 - Other
 - Unknown
 - Completed Decker Line
 - Completed Hand Line
 - Road as Completed Line
 - Wildfire Daily Fire Perimeter
 - State land
 - Bureau of Land Management
 - Shasta-Trinity National Forest
- ### Roads
- Highway
 - Paved Road
 - Gravel Road
 - Diri Road
 - Unclassified Road



Belinda Lo
22-Oct-2018 @ 22:15
NAD83 UTM Zone 10N



Sources: Esri, HERE, Garmin, Intermap, increment P Corp., GEBCO, USGS, FAO, NPS, NRCAN, GeoBase, IGN, Kadaster NL, Ordnance Survey, Esri Japan, METI, Esri China (Hong Kong), Swisstopo, OpenStreetMap contributors, and the GIS User Community