

# Seeding & Mulching Map

## Delta & Hirz Fires

CA-SHF-001444  
CA-SHF-001223

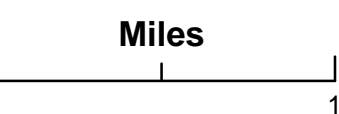
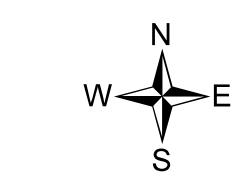
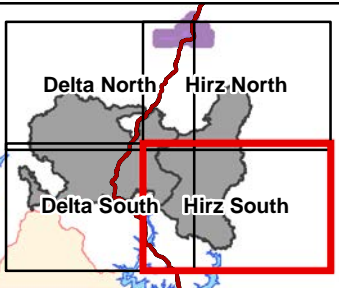
## Hirz South Page

Operational Period  
October 30, 2018

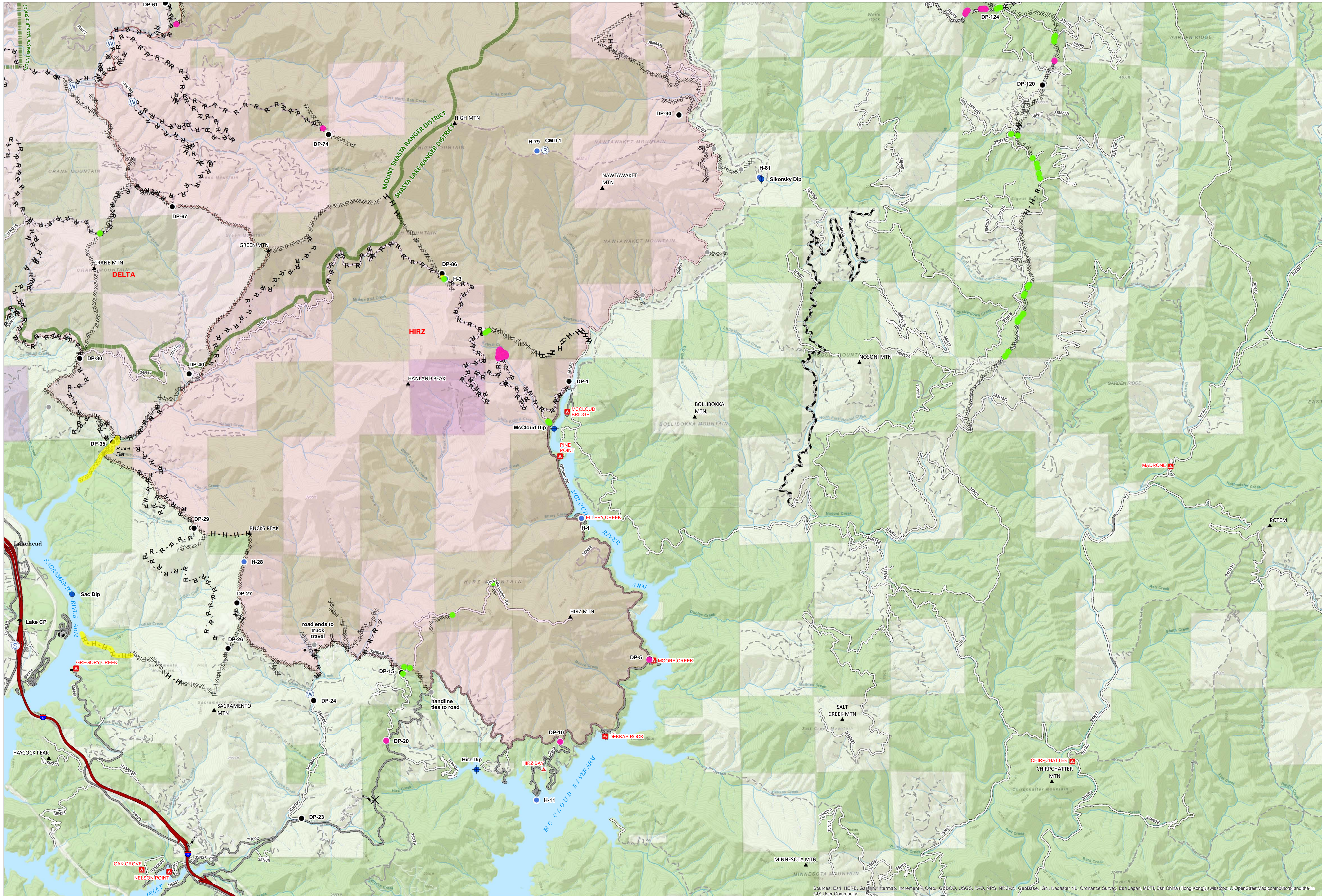
### Legend

- Treatment Complete
  - Treatment Cancelled
  - Potential Mulch Site
  - Potential Seed & Mulch Site
  - Serpentine
  - Camp
  - Closure
  - Dip Site
  - Drop Point
  - Gate
  - Helispot
  - Hot Spot
  - Mobile Weather Unit
  - Pump
  - Repeater
  - Spot Fire
  - Staging Area
  - Water Source
  - Water Tank
  - Value at Risk
  - Other
  - Unknown
  - Completed Deer Line
  - Completed Hand Line
  - Road as Completed Line
  - Wildfire Daily Fire Perimeter
  - State land
  - Bureau of Land Management
  - Shasta-Trinity National Forest
- ### Roads
- Highway
  - Paved Road
  - Gravel Road
  - Dirt Road
  - Unclassified Road

### Map Page Key



Belinda Lo  
29-Oct-2018 @ 18:02  
NAD83 UTM Zone 10N



Sources: Esri, HERE, Garmin, Intermap, increment P Corp., GEBCO, USGS, FAO, NPS, NRCAN, GeBCo, IGN, Kadaster NL, Ordnance Survey, Esri Japan (Tokyo), Swisstopo, © OpenStreetMap contributors, and the GIS User Community