

DIV PP

DIV MM

DIV TT

052
Ash Pile
41° 5.100' N
122° 30.617' W
Div PP

050
Ash Piles - Multiple Locations
41° 4.617' N
122° 29.933' W
Div PP

051
Ash Pile
41° 4.975' N
122° 30.244' W
Div PP

047
Creeping Fire
41° 4.333' N
122° 29.480' W
Div PP

045
Smoldering Logs
41° 4.208' N
122° 29.323' W
Div PP

041
Ash Piles - Multiple Locations
41° 4.393' N
122° 27.944' W
Div TT

049
Ash Piles - Multiple Locations
41° 4.367' N
122° 29.766' W
Div PP

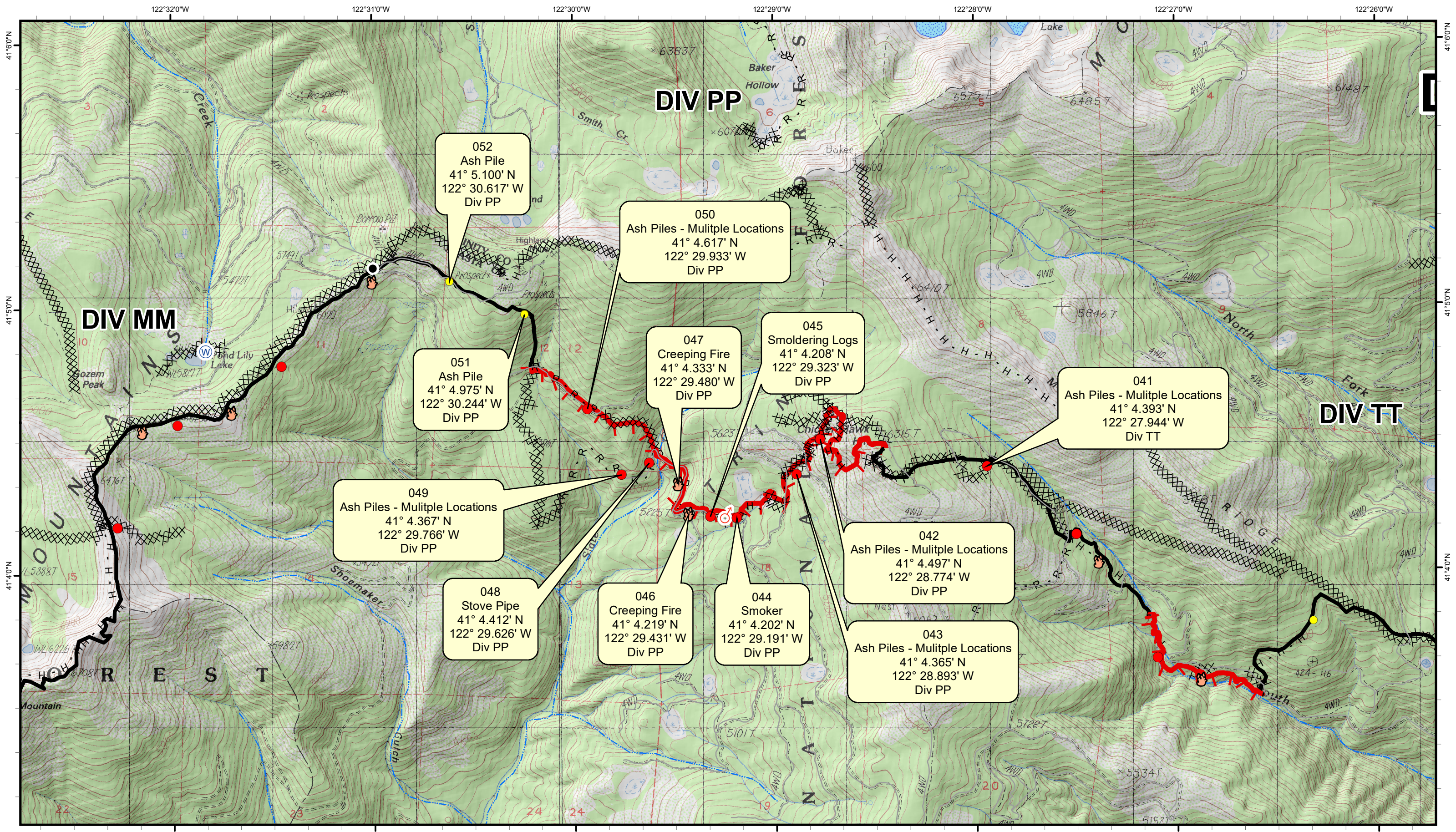
048
Stove Pipe
41° 4.412' N
122° 29.626' W
Div PP





046
Creeping Fire
41° 4.219' N
122° 29.431' W
Div PP

044
Smoker
41° 4.202' N
122° 29.191' W
Div PP

042
Ash Piles - Multiple Locations
41° 4.497' N
122° 28.774' W
Div PP

043
Ash Piles - Multiple Locations
41° 4.365' N
122° 28.893' W
Div PP

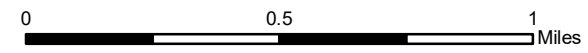


-  Active Fire - Open Flame Greater than 12"
-  Creeping Fire - 12" Flame Lengths or Less
-  Significant - Considerable Threat to Fireline
-  Moderate - Possible Threat to Fireline

Delta Fire

CA-SHF-1444

Infrared - Div PP
Infrared Data Captured 20180916 @ 1130




September 16, 2018

VETS
www.122vets.com
805.218-9646
Cost Effective Infrared

Aspen Helicopters
www.aspenhelo.com
805.985-5416