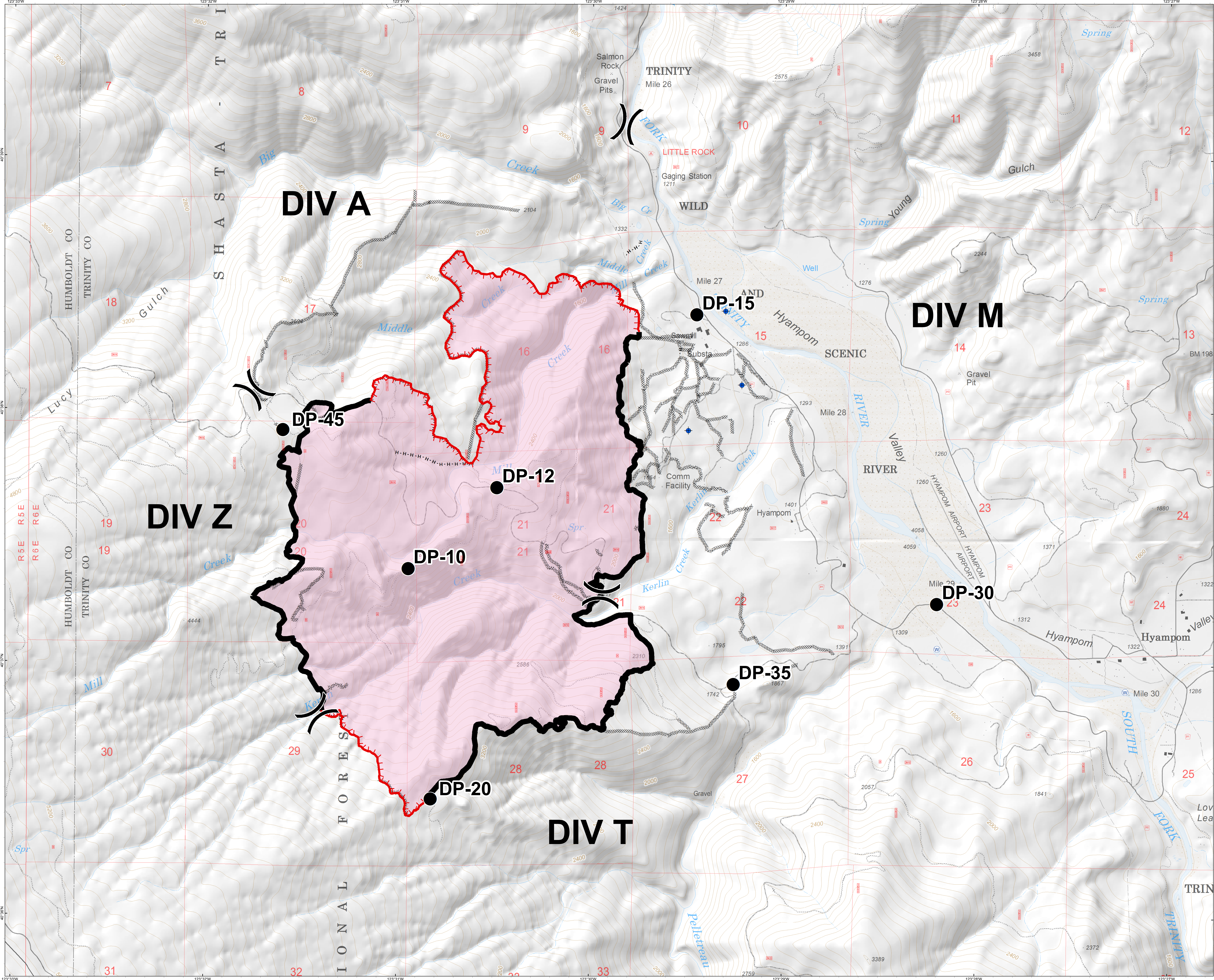
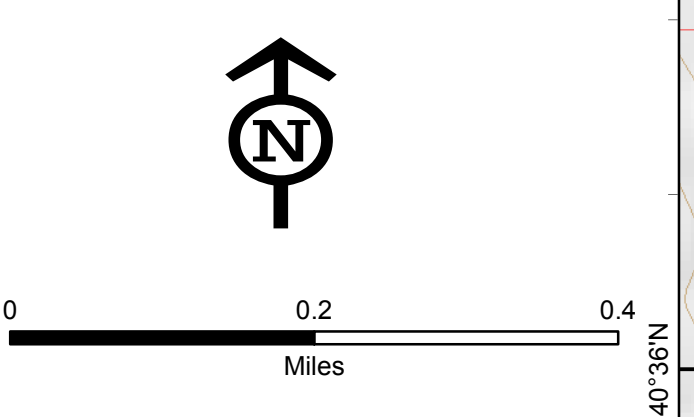


KERLIN FIRE
BRIEFING
CA-SHF-1438
SEPTEMBER 11, 2018
1,748 ACRES
AS OF 9/10 @ 2130

- Dip Site
- Drop Point
- Water Source
- Division Break
- Uncontrolled Fire Edge
- Completed Line
- Completed Dozer Line
- Completed Hand Line
- Wildfire Daily Fire Perimeter



DIV A

DIV Z

DIV T

DIV M

DP-45

DP-12

DP-10

DP-20

DP-15

DP-35

DP-30

TRINITY
Mile 26

SCENIC
Mile 28

Hyampom
Mile 30

LITTLE ROCK
Caging Station
1271

Comm Facility

TRINITY