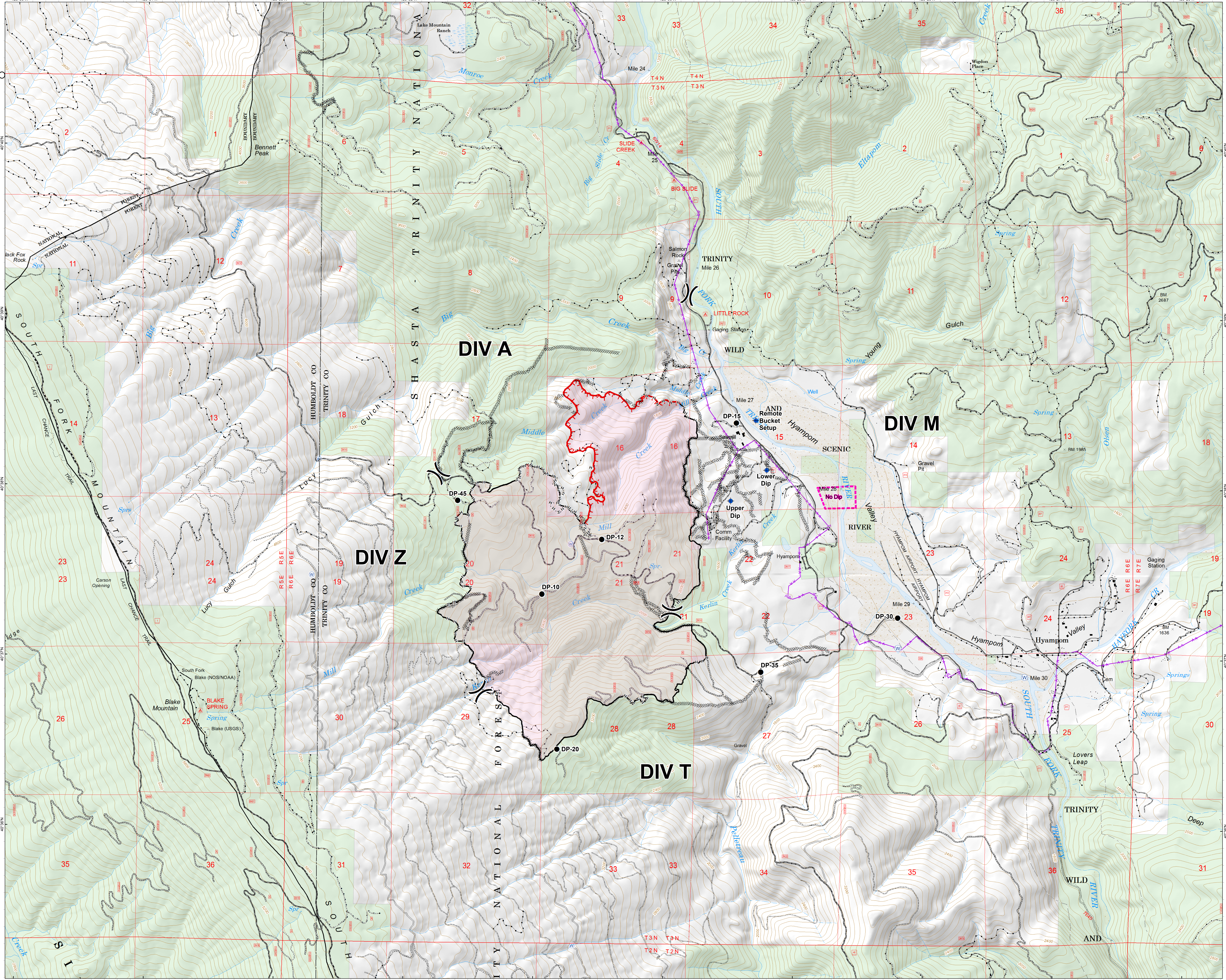


KERLIN FIRE  
 OPERATIONS  
 CA-SHF-1438  
 9/12/2018  
 DAY SHIFT  
 1,748 ACRES  
 AS OF 9/10 @ 2130

- Dip Site
- Drop Point
- Water Source
- Division Break
- Uncontrolled Fire Edge
- Completed Line
- Completed Dozer Line
- Completed Hand Line
- Wildfire Daily Fire Perimeter
- Transmission Lines
- No Dip
- Land Ownership**
- NON-FS
- USDA FOREST SERVICE
- PBS Transportation Lines**
- Road - Light Duty - Dirt
- Road - Light Duty - Gravel
- Road - Light Duty - Paved
- Road - Light Duty - Other
- Road - Unimproved
- Trail
- Trinity Timber Roads**
- Car
- Truck
- ATV
- Decommissioned
- Unknown



0 0.15 0.3  
Miles