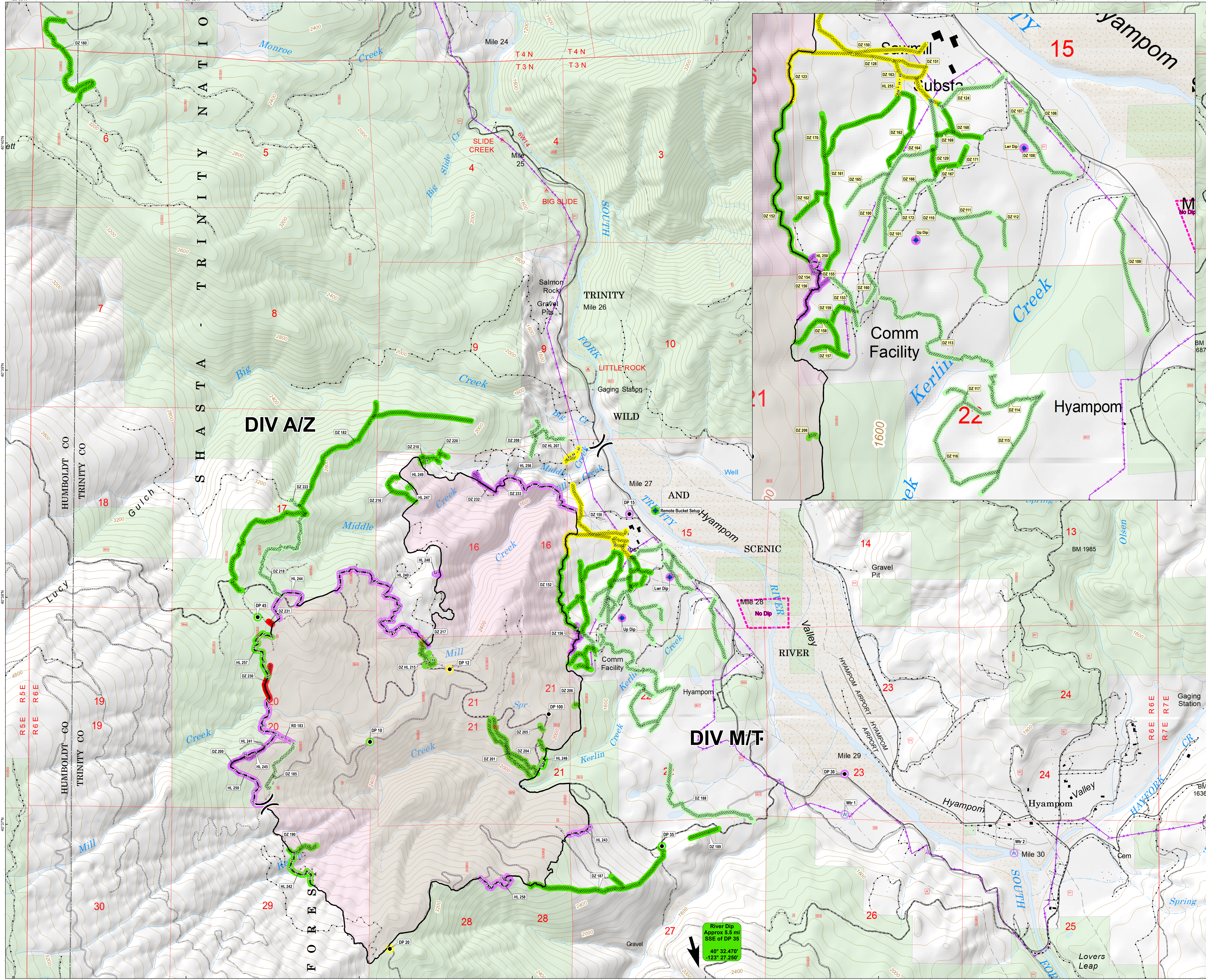


KERLIN FIRE
 REPAIR STATUS
 CA-SHF-1438
 9/13/2018
 1,751 ACRES

- Repair Status**
- █ Completed - Inspected
 - █ Completed - Ready for Inspection
 - █ In Progress
 - █ Repair Needed
 - █ No Repair Needed
 - █ Other - See Comments
 - █ Unknown
- Event Point**
- + Dip Site
 - Drop Point
 - W Water Source
- Division Break**
- Completed Line**
- Completed Line
 - Completed Dozer Line
 - Completed Hand Line
 - Road as Completed Line
 - Wildfire Daily Fire Perimeter
- PBS Transportation Lines**
- Road - Light Duty - Dirt
 - Road - Light Duty - Gravel
 - Road - Light Duty - Paved
 - Road - Light Duty - Other
 - Road - Unimproved
 - Trail
- Trinity Timber Roads**
- Car
 - Truck
 - ATV
 - Decommissioned
 - Unknown
 - No Dip
- Land Ownership**
- NON-FS
 - USDA FOREST SERVICE



River Dip
 Approx 5.5 mi
 SSE of DP 35
 40° 32.470'
 123° 27.250'

