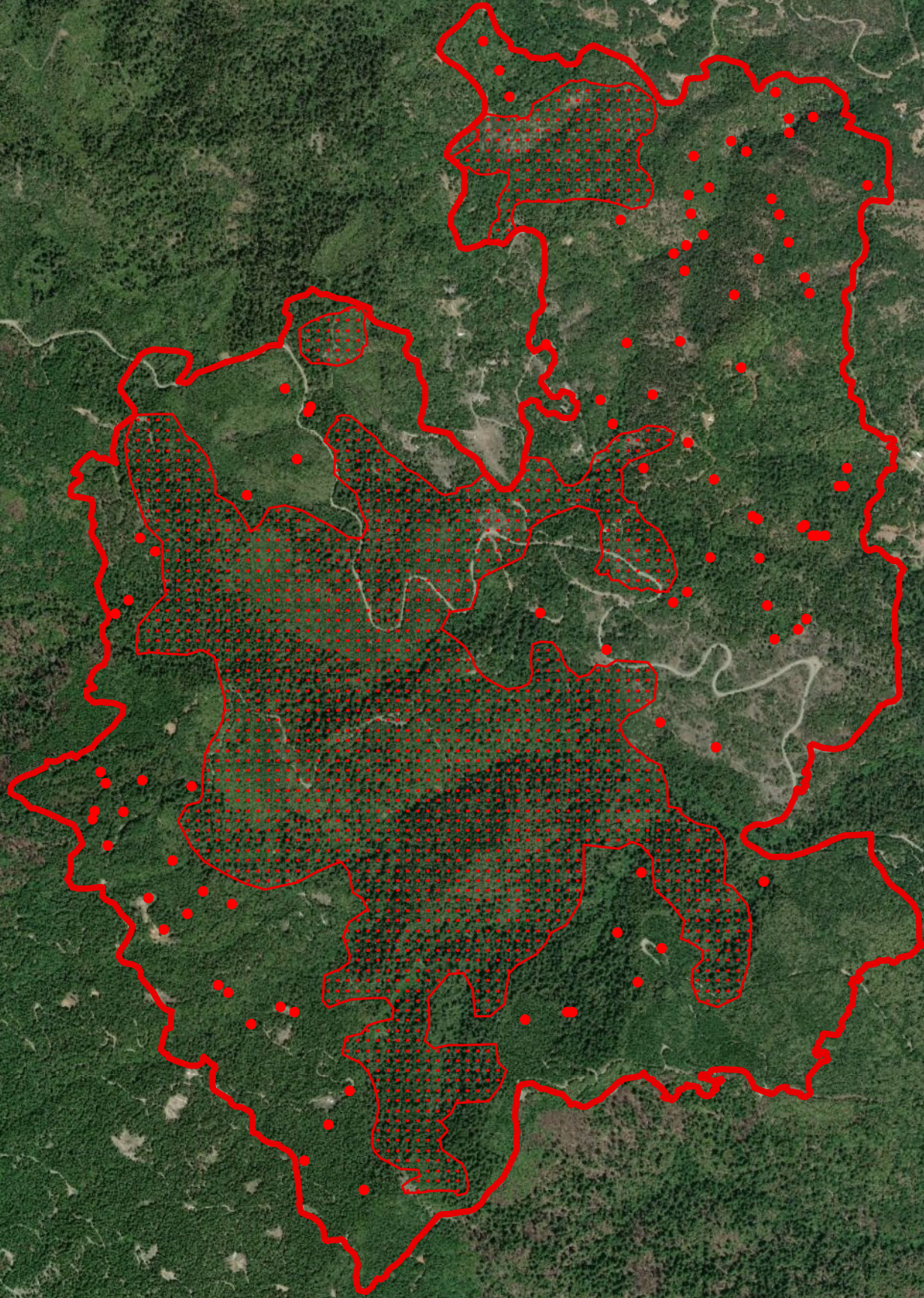


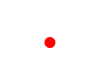


123°32'W 123°31'30"W 123°31'W 123°30'30"W 123°30'W 123°29'30"W

Kerlin Fire CA-SHF-001438

Infrared Interpretation
Flight: September 12, 2018 @ 2246 PDT
Acres: 1,749



-  Heat Perimeter
-  Scattered Heat
-  Isolated Heat



0 0.25 0.5 Miles

IRIN: Lauren Miller



Source: Esri, DigitalGlobe, GeoEye, Earthstar Geographics, CNES/Airbus DS, USDA, USGS, AeroGRID, IGN, and the GIS User Community

123°32'W 123°31'30"W 123°31'W 123°30'30"W 123°30'W 123°29'30"W 123°29'W

40°39'30"N
40°39'N
40°38'30"N
40°38'N
40°37'30"N
40°37'N
40°36'30"N
40°36'N
40°35'30"N

40°39'30"N
40°39'N
40°38'30"N
40°38'N
40°37'30"N
40°37'N
40°36'30"N
40°36'N
40°35'30"N