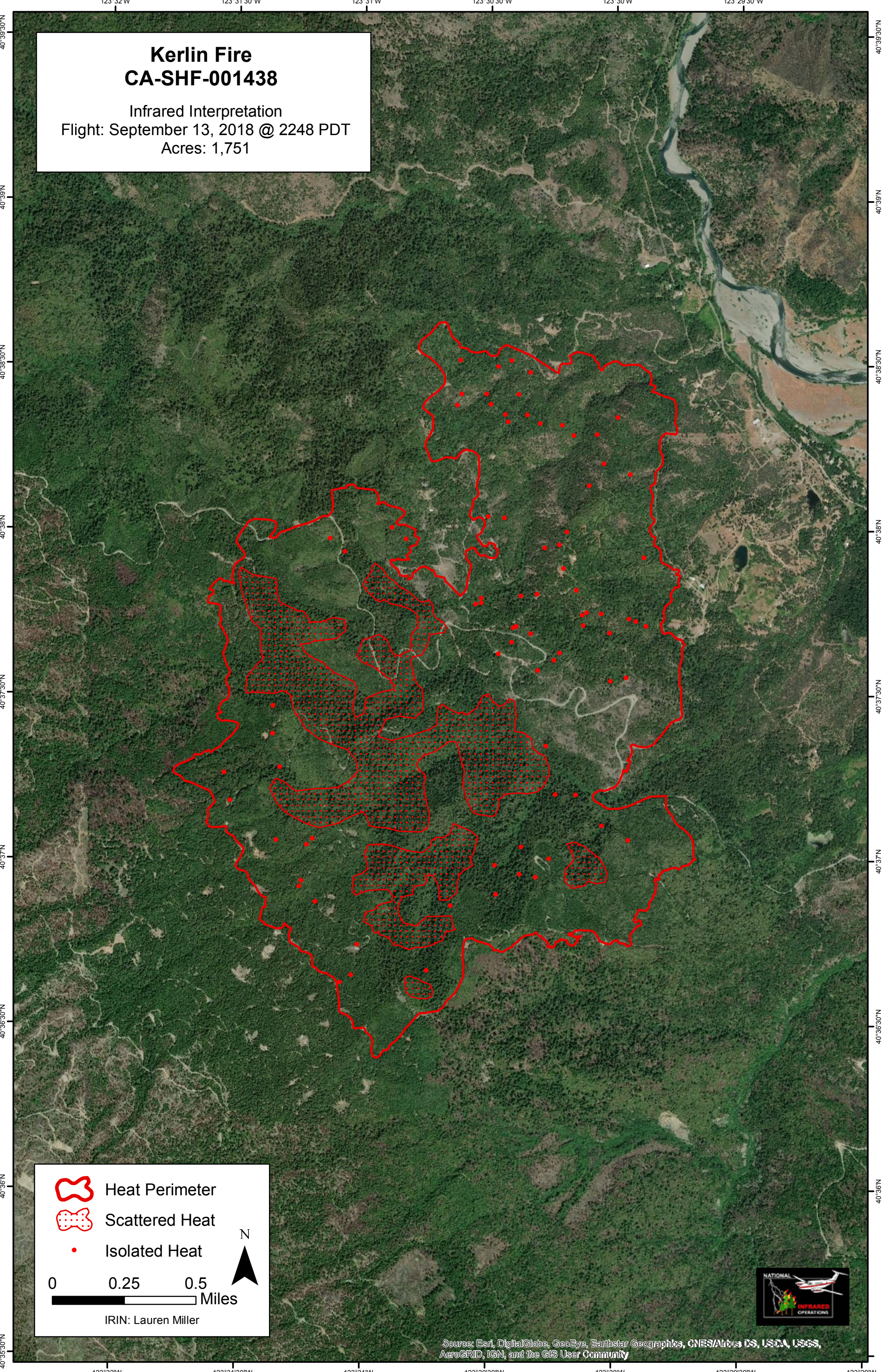


123°32'W 123°31'30"W 123°31'W 123°30'30"W 123°30'W 123°29'30"W




# Kerlin Fire CA-SHF-001438


Infrared Interpretation  
Flight: September 13, 2018 @ 2248 PDT  
Acres: 1,751

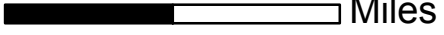


40°39'30"N  
40°39'N  
40°38'30"N  
40°38'N  
40°37'30"N  
40°37'N  
40°36'30"N  
40°36'N  
40°35'30"N

40°39'30"N  
40°39'N  
40°38'30"N  
40°38'N  
40°37'30"N  
40°37'N  
40°36'30"N  
40°36'N  
40°35'30"N

 Heat Perimeter  
 Scattered Heat  
 Isolated Heat

 N

0      0.25      0.5  
 Miles

IRIN: Lauren Miller



Source: Esri, DigitalGlobe, GeoEye, Earthstar Geographics, CNES/Airbus DS, USDA, USGS, AeroGRID, IGN, and the GIS User Community

123°32'W 123°31'30"W 123°31'W 123°30'30"W 123°30'W 123°29'30"W 123°29'W