

120°42'0"W 120°40'0"W 120°38'0"W 120°36'0"W 120°34'0"W

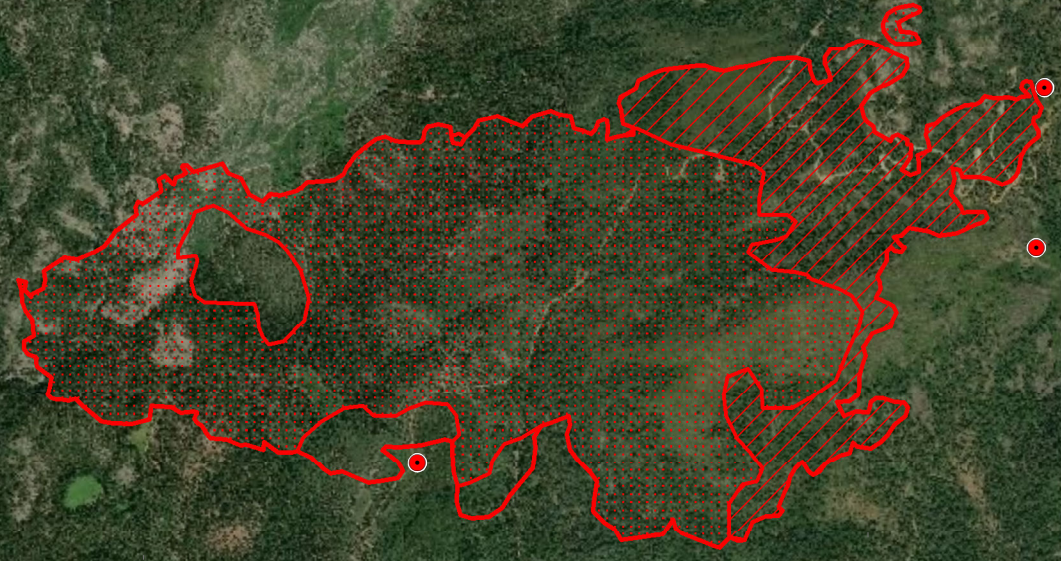
North Infrared Map September 6, 2018

CA-TNF-001355
IR Flight: 9/5/18 2103 PDT
IR Acres: 1,141
NAD 83 - UTM Zone 10
IRIN: Tim Stauffer


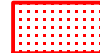
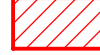



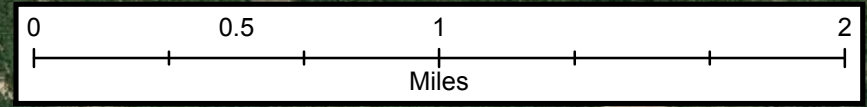
39°18'0"N
39°16'0"N

39°18'0"N
39°16'0"N



Legend

-  Isolated Heat
-  Scattered Heat
-  Intense Heat
-  Heat Perimeter



Source: Esri, DigitalGlobe, GeoEye, Earthstar Geographics, CNES/Airbus DS, USDA, USGS, AEX, Getmapping, Aerogrid, IGN, IGP, swisstopo, and the GIS User Community

120°42'0"W 120°40'0"W 120°38'0"W 120°36'0"W 120°34'0"W