

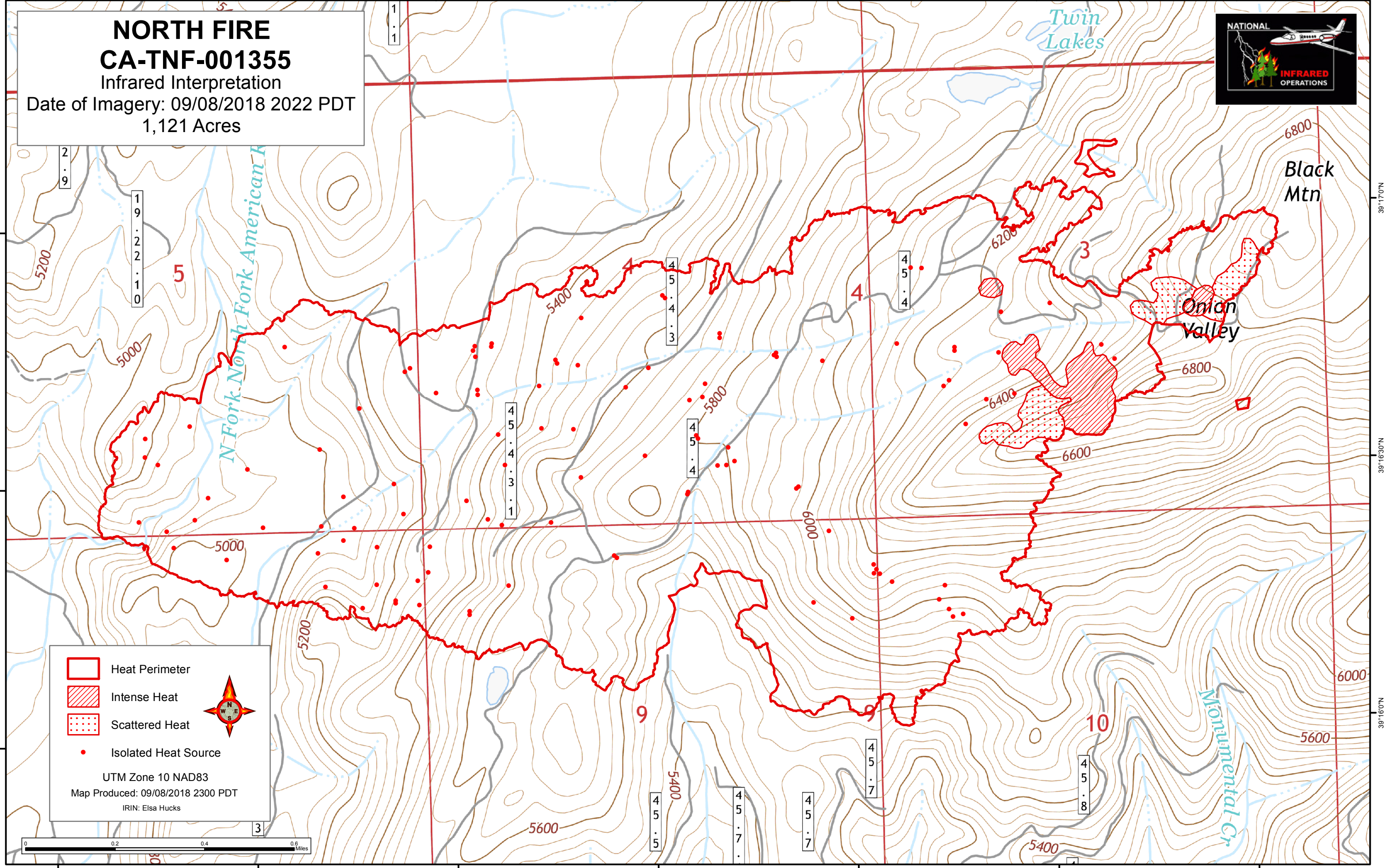
120°39'30"W 120°39'0"W 120°38'30"W 120°38'0"W 120°37'30"W 120°37'0"W 120°36'30"W

**NORTH FIRE**  
**CA-TNF-001355**  
Infrared Interpretation  
Date of Imagery: 09/08/2018 2022 PDT  
1,121 Acres



39°17'0"N  
39°16'30"N  
39°16'0"N

39°17'0"N  
39°16'30"N  
39°16'0"N



- Heat Perimeter
- Intense Heat
- Scattered Heat
- Isolated Heat Source

UTM Zone 10 NAD83  
Map Produced: 09/08/2018 2300 PDT  
IRIN: Elsa Hucks



120°39'30"W 120°39'0"W 120°38'30"W 120°38'0"W 120°37'30"W 120°37'0"W 120°36'30"W