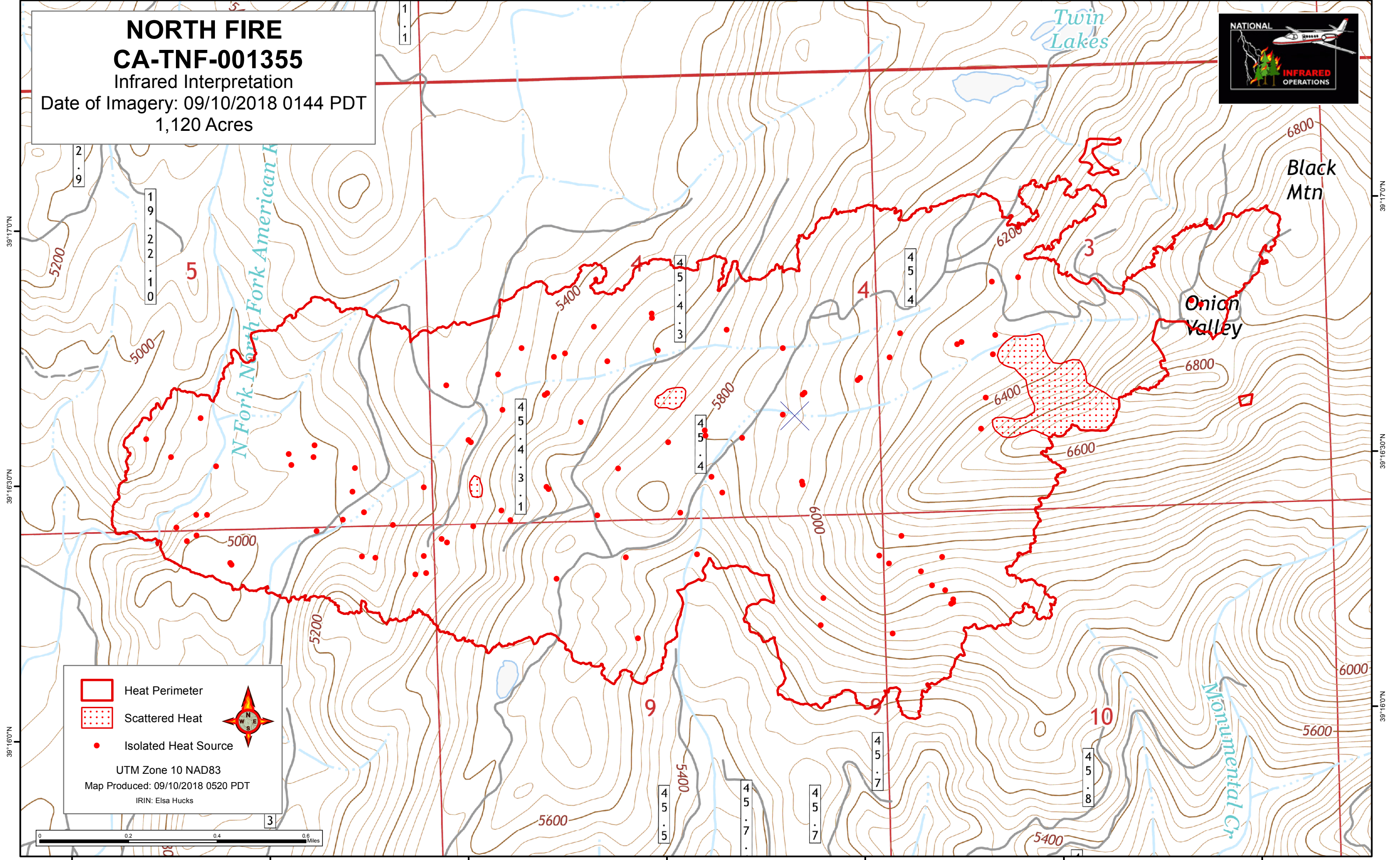





120°39'30"W 120°39'00"W 120°38'30"W 120°38'00"W 120°37'30"W 120°37'00"W 120°36'30"W

**NORTH FIRE**  
**CA-TNF-001355**  
Infrared Interpretation  
Date of Imagery: 09/10/2018 0144 PDT  
1,120 Acres



-  Heat Perimeter
-  Scattered Heat
-  Isolated Heat Source

UTM Zone 10 NAD83  
Map Produced: 09/10/2018 0520 PDT  
IRIN: Elsa Hucks



120°39'30"W 120°39'00"W 120°38'30"W 120°38'00"W 120°37'30"W 120°37'00"W 120°36'30"W

39°17'00"N  
39°16'30"N  
39°16'00"N

39°17'00"N  
39°16'30"N  
39°16'00"N