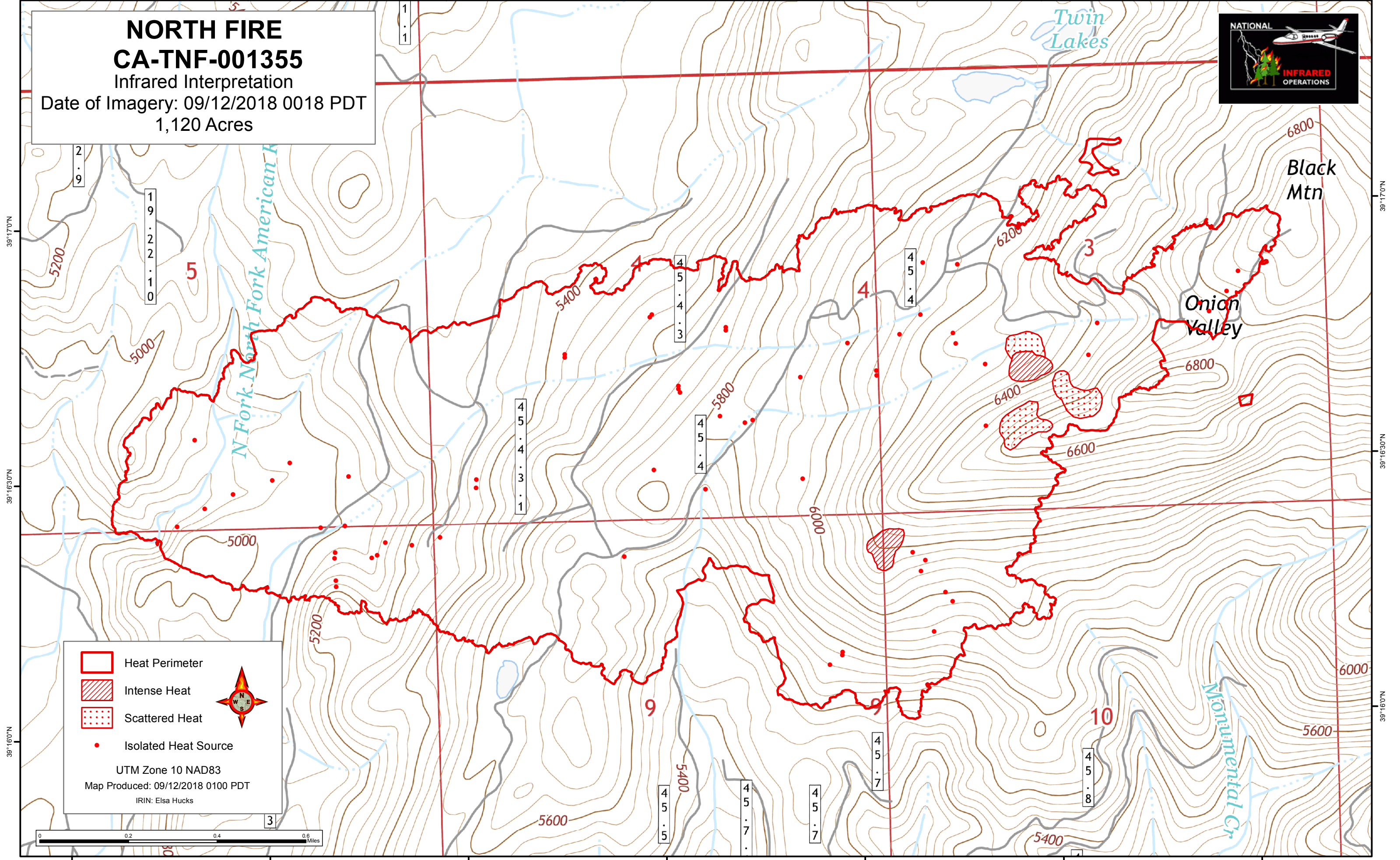


120°39'30"W 120°39'0"W 120°38'30"W 120°38'0"W 120°37'30"W 120°37'0"W 120°36'30"W

NORTH FIRE
CA-TNF-001355
Infrared Interpretation
Date of Imagery: 09/12/2018 0018 PDT
1,120 Acres



- Heat Perimeter
- Intense Heat
- Scattered Heat
- Isolated Heat Source

UTM Zone 10 NAD83
Map Produced: 09/12/2018 0100 PDT
IRIN: Elsa Hucks



39°17'0"N
39°16'30"N
39°16'0"N

39°17'0"N
39°16'30"N
39°16'0"N

120°39'30"W 120°39'0"W 120°38'30"W 120°38'0"W 120°37'30"W 120°37'0"W 120°36'30"W