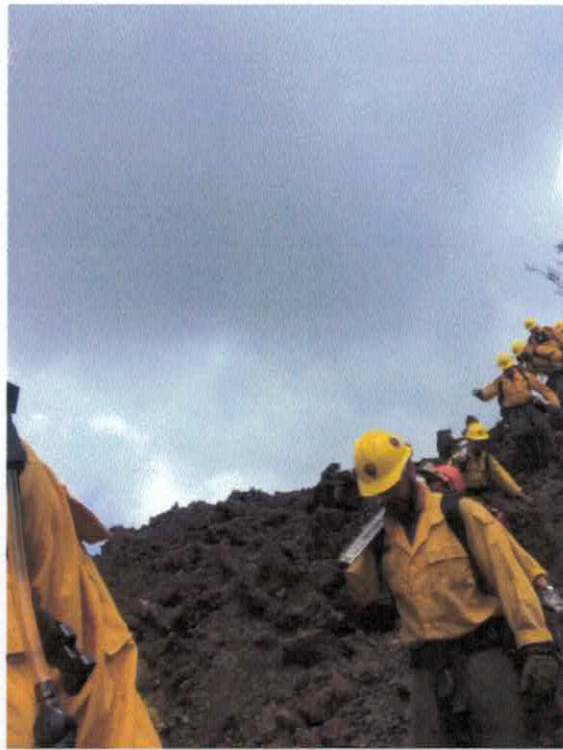


INCIDENT ACTION PLAN



BLM Folsom Lake Veterans' Crew

HI-HVP-1800002096
PPL25B 1502

August 12 0700 - August 13 0700, 2018

Keauhou Ranch Brush Fire



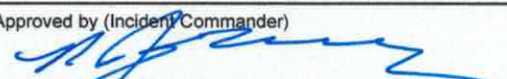
IAP




MAPS



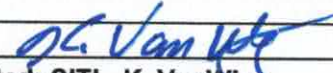
"Adapt...Improvise...and Overcome"

INCIDENT OBJECTIVES	Incident Name Keauhou Ranch Brush Fire	Date 8/11/2018	Time 2000
Operational Period Sunday, August 12 0700 to Monday, August 13, 2018 0700			
<p>General Control Objectives for the Incident (include alternatives)</p> <p><u>LEADERS INTENT:</u> The highest priority will be focused on minimizing risk to firefighters and the public by continually using the risk management process. It is the expectation that every person assigned in any type of leadership role provides the appropriate mitigation measures prior to engaging in any activity.</p> <p>Coordinate actions with Volcano Emergency Incident Command Team to provide appropriate responder and public evacuation time frames.</p> <p><u>INCIDENT OBJECTIVES:</u></p> <ul style="list-style-type: none"> • Adopt decisions and actions that thoughtfully consider firefighter and public safety especially with respect to communications, driving, aviation and volcanic activity. • Maintain full integration under incident command ensuring stakeholder concerns are addressed for the incident. • Coordinate closely with local resources in order to place a high priority on reducing the threat to Kipuka Ki, Kipuka Puau, Kapapala Ranch, Keauhou Ranch, rare and protected plant and animal species, cultural resources and associated infrastructure. • Where practical, minimize suppression impacts through the use of existing natural barriers and trails. • Utilize resources to maximize efficiency and minimize cost expenditures. <p><u>CONTROL OBJECTIVES:</u> Keep the fire:</p> <ul style="list-style-type: none"> • East of Keamoku Lava flow and Kapapala Ranch to protect the ranch grass lands and evacuation routes associated with HAVO Volcanic activity. • West of Keamoku Lava Flow and the Quarry to restrict the fire size, thereby reducing exposure to Keauhou and to firefighters and the public. • South of the top of Mauna Loa strip road, Mauna Loa lookout shelter to protect Mauna Loa trail, native forests and threatened and endangered species. • North of Kipuka Ki, Quarry and Kapapala Ranch to protect evacuation routes associated with HAVO Volcanic activity, Namakani Paio campground, Highway 11 and associated infrastructure. 			
Weather Forecast for Period			
<u>Attachments (mark if attached)</u>			
X Organization List - ICS 203	X Medical Plan - ICS 206	X Safety Message	
X Div. Assignment Lists - ICS 204	X Incident Map	X Weather	
X Communications Plan - ICS 205	X Traffic Plan	<input checked="" type="checkbox"/> Human Recourses	
Prepared by (Planning Section Chief) Ken Bates, PSC 2	Approved by (Incident Commander) 		

ORGANIZATION ASSIGNMENT (ICS 203)

1. Incident Name Keauhou Ranch Brush Fire		2. Operational Period:		Date From: 8/12/2018 Time From: 0700	Date To: 8/13/2018 Time To: 0700
3. Incident Commander(s) and Command Staff:			7. Operations Section:		
IC	Nickie Johnny / Matt Conklin (t)	Day Operations	Mike Koontz		
Safety Officer	Paul Tompkins / Paul Leusch (t)	Night Operations			
Public Info. Officer	Dan Patterson	Planning Ops	Don Smith		
Liaison Officer	Larry LaVogue	Branch			
Human Resources		Branch Director			
4. Agency/Organization Representatives:		Division/Group			
Hawaii Volcanoes National Park	Cindy Orlando	Division/Group			
Hawaii Volcanoes National Park	Greg Funderburk	Branch			
Hawaii County Fire	Darren Rosario	Branch Director			
Kapapala Ranch	Lani Cran	Division/Group	A / B	Brian Gilmore / Justin Yoniles (t)	
Keauhou Ranch	Keala Kanakaole	Division/Group	C	Rob Noxon / Nat Osburn (t)	
5. Planning Section:		Division/Group	D	John Owings / Paul Mancuso	
Chief	Ken Bates	Group Kidder	Dozer / Contingency	Al Ward	
Deputy					
Resources Unit	Josh Clark	Branch			
Situation Unit	Ken VanWig	Branch Director			
Resource Advisor	Rhonda Loh / Summer Roper	Division/Group			
Demobilization Unit		Division/Group			
GISS	Dawn Hutchinson				
		Night			
		Division/Group	Night	Unstaffed	
6. Logistics Section					
Chief	Martie Hale				
Deputy		Air Operations Branch			
Technical Support Spec	Brett Davidson	Air Ops Branch Dir.	Joann Overacker		
Ordering / Food Unit	Morgan Keck	ASGS			
Supply Unit					
Facilities Unit		8. Finance/Administration Section:			
Ground Support Unit		Chief	Karen Bauman		
RCDM		Deputy			
Equipment Manager		Time Unit			
Communications Unit	Chris Perry	Procurement Unit			
Medical Unit	Gena Fowlkes	Comp/Claims Unit			
		Cost Unit			
7. Prepared by:	Name: K. Bates	Position/Title: PSC2	Signature:		
ICS 203	IAP Page	Date/Time: 8/11/2018 2000			

WEATHER AND FIRE BEHAVIOR FORECAST

FORECAST NUMBER: 2	OPERATIONAL PERIOD: August 12 - 13, 2018
FIRE NAME: Keauhou Ranch Brush Fire	Saturday 0700 – Sunday 0700
DATE ISSUED: 8/11/18 1700hrs	
UNIT: HI-HVP-1800002096	SIGNED: 
	Typed/printed: SITL, K. VanWig

INPUTS

WEATHER SUMMARY: Warming and Drying trend expected to continue.

DISCUSSION... Light to moderate northeast winds and mostly dry weather can be expected through Sunday. Any passing showers will be light and brief.

SUNDAY

Sky/weather.....Mostly sunny. Isolated showers in the afternoon.
CWR.....10 percent.
LAL.....1
Max temperature....Around 72.
Min humidity.....42 percent.
Wind (20 ft).....Northeast winds 7 to 10 mph.
Mixing height.....2000-2300 ft AGL.
Transport winds.....East around 13 mph.

SUNDAY NIGHT

Sky/weather.....Partly cloudy. Isolated showers.
CWR.....20 percent.
LAL.....1
Min temperature....Around 53.
Max humidity.....100 percent.
Wind (20 ft).....Northeast winds 5 to 6 mph.
Mixing height.....2000-2200 ft AGL.
Transport winds.....East around 12 mph.

LAL: 1.....CWR: 10%.....KBDI.....582

OUTPUTS FIRE BEHAVIOR

GENERAL:

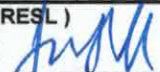
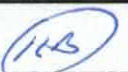
The fires main influence is heavy fuels in Koa forested area with non-native grass and brush understory. The fire has been dependent upon wind alignment. Fire still has potential to spread into light flashy fuels as they dry under the lower humidity.

Fire potential: Surface fire spread 1-3 ch/hr with headfire, 0.5 ch/hr backing and flanking.

Fire Behavior for this operational period will be minimal as fuel moistures are still high. Expect creeping and smoldering as fuels dry and holdover fire in the heavier fuels to become active in the afternoon.

SAFETY

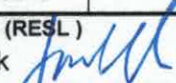

- Windy conditions today with Lower Relative Humidity...Fuels will become more receptive to spread fire.
- STOP = Stop Think Observe Predict
- Keep up on your situational awareness for any increase in fire activity.

ASSIGNMENT LIST		1. Branch	2. Division/Group				
3. Incident Name Keauhou Ranch Brush Fire		4. Operational Period Date: 8/12/2018 - 8/13/2018			Time: 0700 - 0700		
5. Operations Personnel							
Operations Chief	Mike Koontz	Division/Group Supervisor		Brian Gilmore Justin Yoniles			
Branch Director		Air Op's Branch Director		Joann Overacker			
6. Resources Assigned This Period							
Strike Team/Task Force/ Resource Designator	Last Shift	Leader	No. Pers.	Trans. Needed	Drop Off PT./Time	Pick Up PT./Time	
HC2 FOLSOM LAKE T2IA	8/19	JASON SCHROEDER	21	N	ICP 0700	ICP 1900	
FUM SEQUOIA MODULE	8/23	ROSS GARLAPOW	10	N	ICP 0700	ICP 1900	
ENG3 DOFAW BT4	TBD	STEVE BURKHEAD (T3)	5	N	ICP 0700	ICP 1900	
WT2 DOFAW TENDER 3	TBD	STEVE BURKHEAD (BT4)	2	N	ICP 0700	ICP 1900	
7. Work Assignments							
Mop-up as appropriate with firefighter safety considerations taken into account.							
Construct direct/indirect line, hose lays, etc. to limit fire spread into unaffected areas.							
SNAG Mauna Loa Rd as appropriate for access and firefighter safety.							
Coordinate with READS.							
8. Special Instructions							
GPS old powerline insulators found for READS.							
Function	Frequency - RX	Frequency - TX	Tone	Channel	Comments		
Command	170.3625	164.1625	131.8/1318	MLOA D	Volcano Dispatch		
Command	170.3625	164.1625	131.8/526	MLOA A			
Tactical	168.0500	168.0500	0.0	NIFC T1			
Air to Ground	166.6125	166.6125	0.0	Air Tac			
Prepared by (RESL) Josh Clark 		Approved by (PSC) Ken Bates 		Date 8/11/2018	Time 2000 hrs		

INCIDENT RADIO COMMUNICATIONS PLAN		Incident Name		Date/Time Prepared		Operational Period Date/Time			
Keauhou Ranch Brush Fire		08/11/18 1600		08/12/18-0700--08/13/18-0700					
Zn / Ch	Function	Channel Name/Trunked Talkgroup	Assignment	RX Freq	RX Tone/NAC	TX Freq	TX Tone/NAC	Mode A, D, M	Remarks
1	Dispatch	MLOA D	All Divisions	170.3625	131.8/1318	164.1625	131.8/1318	D	Volcano Dispatch
2	Dispatch	MLOA A	All Divisions	170.3625	131.8/526	164.1625	131.8/526	A	Volcano Dispatch
3	Tactical	NIFC T1	DIV A/B	168.0500	0.0	168.0500	0.0	A	
4	Tactical	NIFC T2	DIV C	168.2000	0.0	168.2000	0.0	A	
5	Tactical	NIFC T3	D/Dozer/contingency	168.6000	0.0	168.6000	0.0	A	
6	Tactical	NIFC T5	Unassigned	166.7250	0.0	166.7250	0.0	A	
7	Tactical	NIFC T6	Unassigned	166.7750	0.0	166.7750	0.0	A	
8	Air to Ground TAC	Air Tac	All Divisions	166.6125	0.0	166.6125	0.0	A	
9		Blank							
10		Blank							
11		Blank							
12		Blank							
13		Blank							
14		Blank							
15		Blank							
16/20	Emergency only	GUARD	All Divisions	168.6250	0.0	168.6250	110.9	A	T1 - AIR GUARD - emerg. use only
Prepared By (Communications Unit Leader)		Chris Perry		Incident Location		Latitude, Longitude		1/14/14 v.5	

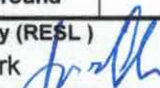

Deviations are assumed to be narrow band unless otherwise noted in the remarks. Mode refers to either "A" (analog), "D" (digital) or "M" (mixed mode).

Operations and Divisions have Hawaii County Fire Dept radios to communicate with Copter 1.

ASSIGNMENT LIST			1. Branch		2. Division/Group		
3. Incident Name Keauhou Ranch Brush Fire			4. Operational Period Date: 8/12/2018 - 8/13/2018			Time: 0700 - 0700	
5. Operations Personnel							
Operations Chief		Mike Koontz		Division/Group Supervisor		Rob Noxon Nat Osburn	
Branch Director				Air Op's Branch Director		Joann Overacker	
6. Resources Assigned This Period							
Strike Team/Task Force/ Resource Designator	Last Shift	Leader	No. Pers.	Trans. Needed	Drop Off PT./Time	Pick Up PT./Time	
HC2 HAWAII CREW T2IA	TBD	OLA MEREIDOS	17	N	ICP 0700	ICP 1900	
ENG3 E602	TBD	DEXTER PACHECO	1	N	ICP 0700	ICP 1900	
ENG3 E603	TBD	JOHN FAFORD	1	N	ICP 0700	ICP 1900	
WT2 TENDER T301	TBD	ANTHONY HATARI	2	N	ICP 0700	ICP 1900	
7. Work Assignments							
Construct direct/indirect line and improve current line to limit fire spread into unaffected areas.							
Mop up as appropriate with firefighter safety considerations taken into account.							
SNAG Mauna Loa Rd so as to permit safe egress.							
Coordinate with READS.							
8. Special Instructions							
GPS old powerline insulators found for READS.							
Function	Frequency - RX	Frequency - TX	Tone	Channel	Comments		
Command	170.3625	164.1625	131.8/1318	MLOA D	Volcano Dispatch		
Command	170.3625	164.1625	131.8/526	MLOA A			
Tactical	168.2000	168.2000	0.0	NIFC T2			
Air to Ground	166.6125	166.6125	0.0	Air Tac			
Prepared by (RESL) Josh Clark 		Approved by (PSC) Ken Bates 		Date 8/11/2018		Time 2000 hrs	

INCIDENT RADIO COMMUNICATIONS PLAN		Incident Name		Date/Time Prepared		Operational Period Date/Time			
COMMUNICATIONS PLAN		Keauhou Ranch Brush Fire		08/11/18 1600		08/12/18-0700--08/13/18-0700			
Zn / Ch	Function	Channel Name/Trunked Talkgroup	Assignment	RX Freq	RX Tone/NAC	TX Freq	TX Tone/NAC	Mode A, D, M	Remarks
1	Dispatch	MLOA D	All Divisions	170.3625	131.8/1318	164.1625	131.8/1318	D	Volcano Dispatch
2	Dispatch	MLOA A	All Divisions	170.3625	131.8/526	164.1625	131.8/526	A	Volcano Dispatch
3	Tactical	NIFC T1	DIV A/B	168.0500	0.0	168.0500	0.0	A	
4	Tactical	NIFC T2	DIV C	168.2000	0.0	168.2000	0.0	A	
5	Tactical	NIFC T3	D/Dozer/contingency	168.6000	0.0	168.6000	0.0	A	
6	Tactical	NIFC T5	Unassigned	166.7250	0.0	166.7250	0.0	A	
7	Tactical	NIFC T6	Unassigned	166.7750	0.0	166.7750	0.0	A	
8	Air to Ground TAC	Air Tac	All Divisions	166.6125	0.0	166.6125	0.0	A	
9		Blank							
10		Blank							
11		Blank							
12		Blank							
13		Blank							
14		Blank							
15		Blank							
16/20	Emergency only	GUARD	All Divisions	168.6250	0.0	168.6250	110.9	A	T1 - AIR GUARD - emerg. use only
Prepared By (Communications Unit Leader)		Chris Perry		Incident Location		Latitude, Longitude		1/14/14 v.5	

Operations and Divisions have Hawaii County Fire Dept radios to communicate with Copter 1.

ASSIGNMENT LIST		1. Branch	2. Division/Group				
		DIV D					
3. Incident Name Keauhou Ranch Brush Fire		4. Operational Period Date: 8/12/2018 - 8/13/2018			Time: 0700 - 0700		
5. Operations Personnel							
Operations Chief	Mike Koontz		Division/Group Supervisor	John Owings Paul Mancuso			
Branch Director			Air Op's Branch Director	Joann Overacker			
6. Resources Assigned This Period							
Strike Team/Task Force/ Resource Designator	Last Shift	Leader	No. Pers.	Trans. Needed	Drop Off PT./Time	Pick Up PT./Time	
ENG3 DOFAW BT1	TBD	DON YOKOYAMA (ALL)	7	N	ICP 0700	ICP 1900	
ENG3 DOFAW BT2	TBD	DON YOKOYAMA (ALL)	7	N	ICP 0700	ICP 1900	
WT2 DOFAW Tender 1	TBD	DON YOKOYAMA (ALL)	2	N	ICP 0700	ICP 1900	
7. Work Assignments							
Coordinate with Kapapala Ranch for line construction/improvement concerns to limit fire spread into rangelands and other unaffected areas.							
8. Special Instructions							
GPS old powerline insulators found for READS.							
Function	Frequency - RX	Frequency - TX	Tone	Channel	Comments		
Command	170.3625	164.1625	131.8/1318	MLOA D	Volcano Dispatch		
Command	170.3625	164.1625	131.8/526	MLOA A			
Tactical	168.6000	168.6000	0.0	NIFC T3			
Air to Ground	166.6125	166.6125	0.0	Air Tac			
Prepared by (RESL) Josh Clark 		Approved by (PSC) Ken Bates 		Date 8/11/2018	Time 2000 hrs		

INCIDENT RADIO COMMUNICATIONS PLAN		Incident Name		Date/Time Prepared		Operational Period Date/Time			
Keauhou Ranch Brush Fire		08/11/18 1600		08/12/18-0700--08/13/18-0700					
Zn / Ch	Function	Channel Name/Trunked Talkgroup	Assignment	RX Freq	RX Tone/NAC	TX Freq	TX Tone/NAC	Mode A, D, M	Remarks
1	Dispatch	MLOA D	All Divisions	170.3625	131.8/1318	164.1625	131.8/1318	D	Volcano Dispatch
2	Dispatch	MLOA A	All Divisions	170.3625	131.8/526	164.1625	131.8/526	A	Volcano Dispatch
3	Tactical	NIFC T1	DIV A/B	168.0500	0.0	168.0500	0.0	A	
4	Tactical	NIFC T2	DIV C	168.2000	0.0	168.2000	0.0	A	
5	Tactical	NIFC T3	D/Dozer/contingency	168.6000	0.0	168.6000	0.0	A	
6	Tactical	NIFC T5	Unassigned	166.7250	0.0	166.7250	0.0	A	
7	Tactical	NIFC T6	Unassigned	166.7750	0.0	166.7750	0.0	A	
8	Air to Ground TAC	Air Tac	All Divisions	166.6125	0.0	166.6125	0.0	A	
9		Blank							
10		Blank							
11		Blank							
12		Blank							
13		Blank							
14		Blank							
15		Blank							
16/20	Emergency only	GUARD	All Divisions	168.6250	0.0	168.6250	110.9	A	T1 - AIR GUARD - emerg. use only
Prepared By (Communications Unit Leader)		Chris Perry		Incident Location		Latitude, Longitude		1/14/14 v.5	

Deviations are assumed to be narrow band unless otherwise noted in the remarks. Mode refers to either "A" (analog), "D" (digital) or "M" (mixed mode).

Operations and Divisions have Hawaii County Fire Dept radios to communicate with Copter 1.

INCIDENT RADIO COMMUNICATIONS PLAN		Incident Name		Date/Time Prepared		Operational Period Date/Time			
Keauhou Ranch Brush Fire		08/11/18 1600		08/12/18-0700--08/13/18-0700					
Zn / Ch	Function	Channel Name/Trunked Talkgroup	Assignment	RX Freq	RX Tone/NAC	TX Freq	TX Tone/NAC	Mode A, D, M	Remarks
1	Dispatch	MLOA D	All Divisions	170.3625	131.8/1318	164.1625	131.8/1318	D	Volcano Dispatch
2	Dispatch	MLOA A	All Divisions	170.3625	131.8/526	164.1625	131.8/526	A	Volcano Dispatch
3	Tactical	NIFC T1	DIV A/B	168.0500	0.0	168.0500	0.0	A	
4	Tactical	NIFC T2	DIV C	168.2000	0.0	168.2000	0.0	A	
5	Tactical	NIFC T3	D/Dozer/contingency	168.6000	0.0	168.6000	0.0	A	
6	Tactical	NIFC T5	Unassigned	166.7250	0.0	166.7250	0.0	A	
7	Tactical	NIFC T6	Unassigned	166.7750	0.0	166.7750	0.0	A	
8	Air to Ground TAC	Air Tac	All Divisions	166.6125	0.0	166.6125	0.0	A	
9		Blank							
10		Blank							
11		Blank							
12		Blank							
13		Blank							
14		Blank							
15		Blank							
16/20	Emergency only	GUARD	All Divisions	168.6250	0.0	168.6250	110.9	A	T1 - AIR GUARD - emerg. use only
Prepared By (Communications Unit Leader)		Chris Perry		Incident Location		Latitude, Longitude		1/14/14 v.5	

Deviations is assumed to be narrow band unless otherwise noted in the remarks. Mode refers to either "A" (analog), "D" (digital) or "M" (mixed mode).

Operations and Divisions have Hawaii County Fire Dept radios to communicate with Copter 1.

AIR OPERATIONS SUMMARY

1. INCIDENT NAME: Keaouhou Ranch
2. PREPARED BY: JoAnn Overacker *JoAnn Overacker*
3. PREPARED DATE/TIME: 8/11/18 1600hrs
4. REMARKS (Safety Notes, Hazards, Air Operations Special Equipment, etc.):
 H-4/Quarry Dip - 19 26.077N X 155 17.437W
 H-5 - 19 29.118N X 155 23.027W
 Keaouhou Dip - 19 28.053N X 155 20.542
5. TFR: # 8/7820
Altitude: MSL 20,000
5 NM Radius of
192419N X 1551652W

OPERATIONAL PERIOD DATE: 08/12/2018 **START:** 0730 **END:** 1900 **SUNRISE:** 0559 **SUNSET:** 1852

6. PERSONNEL		7. FREQUENCIES			8. FIXED WING	
Phone	AM	FM	# Avail / Type/ Make-Model / FAA N# / Base(s)			
AODB: JoAnn Overacker 209-559-1617	AIR/AIR FW: 122.9		AIRTANKERS			
HEBM: Will Lucas 352-262-1957	AIR/AIR RW: 122.9		LEADPLANES			
HEGB: Jeremy Stocks 530-249-9932			AIR TACTICAL PLATFORM			
HEGB(T) Arnold Nakata 808-238-6325	AIR/GROUND	166.6125				
HECM: Garrett Hanna 530-246-6089						
HECM(T): Thomas Hughes 808-640-1084						
	DECK:					
	COMMAND:					
	Air Guard	168.625 Tone 1				

9. HELICOPTERS (Use Additional Sheets as Necessary)

FAA N#	TY	MAKE/MODEL	BASE	AVAIL	START	REMARKS	FAA N#	TY	MAKE/MODEL	BASE	AVAIL	START	REMARKS
67F	III	Hughes 550	H-4	0830	0730	Unavaible							
C-1	III	Hughes 550	H-4			Call when needed							
						Will be at Hilo							

10. TASK/MISSION/ASSIGNMENT (Use ICS-220a if additional space needed; Type/Function includes: Air Tactical, Retardant, Recon, Personnel Transport, Water Dropping, etc.)

TYPE/FUNCTION	NAME OF PERSONNEL OR CARGO (if applicable) OR INSTRUCTIONS FOR TACTICAL AIRCRAFT	MISSION START	FLY FROM	FLY TO
Recon	As needed for Ops and Divisions			
Bucket Drops	As needed			
Cargo	Sling supplies to the line as needed			

INCIDENT RADIO COMMUNICATIONS PLAN		Incident Name		Date/Time Prepared		Operational Period Date/Time			
Keauhou Ranch Brush Fire		08/11/18 1600		08/12/18-0700--08/13/18-0700					
Zn / Ch	Function	Channel Name/Trunked Talkgroup	Assignment	RX Freq	RX Tone/NAC	TX Freq	TX Tone/NAC	Mode A, D, M	Remarks
1	Dispatch	MLOA D	All Divisions	170.3625	131.8/1318	164.1625	131.8/1318	D	Volcano Dispatch
2	Dispatch	MLOA A	All Divisions	170.3625	131.8/526	164.1625	131.8/526	A	Volcano Dispatch
3	Tactical	NIFC T1	DIV A/B	168.0500	0.0	168.0500	0.0	A	
4	Tactical	NIFC T2	DIV C	168.2000	0.0	168.2000	0.0	A	
5	Tactical	NIFC T3	D/Dozer/contingency	168.6000	0.0	168.6000	0.0	A	
6	Tactical	NIFC T5	Unassigned	166.7250	0.0	166.7250	0.0	A	
7	Tactical	NIFC T6	Unassigned	166.7750	0.0	166.7750	0.0	A	
8	Air to Ground TAC	Air Tac	All Divisions	166.6125	0.0	166.6125	0.0	A	
9		Blank							
10		Blank							
11		Blank							
12		Blank							
13		Blank							
14		Blank							
15		Blank							
16/20	Emergency only	GUARD	All Divisions	168.6250	0.0	168.6250	110.9	A	T1 - AIR GUARD - emerg. use only
Prepared By (Communications Unit Leader)		Chris Perry		Incident Location		Latitude, Longitude			
				County				1/14/14 v.5	

M. Perry

Operations and Divisions have Hawaii County Fire Dept radios to communicate with Copter 1.



Health & Safety Message

Incident: Keauhou Ranch Brush Fire HI- HVP- 1800002096	Date/Op Period: Aug. 12-13, 2018 0700-0700 hrs.
---	--

Hazards & Risks

10 Standard Fire Orders & Watchout Situations: *The Commanding Officer's Leaders Intent and SoCal Team 2's commitment to these principles is paramount to firefighter safety and will be the foundation of all fire management decisions. Firefighter Safety is everyone's number one priority!*

Human Factor Barriers to Situation Awareness: *Situational awareness is fundamental to a firefighter's ability to operate safely in the fire environment. Barriers could include low experience level with local factors, distraction from primary task, fatigue, stress reactions, and hazardous attitudes. Remain in the moment and focus on the task at hand.*

Cracks and Faults: *Cracks and faults can form or increase in size after seismic events. Vegetation may help hide new cracks or faults on the landscape. Inspect cracks on foot to insure sink holes have not opened up before driving over any cracks in the road. Report new damage when found.*

Vehicle Operations: *There is an increasing amount of traffic on the Park's road network. Drive defensively traveling to and from your work areas and follow posted speed limits.*

During ash events, driving conditions can become dangerous. If you are driving, pull off of the road, turn your hazard lights on and wait until visibility improves. Ash can also make roads slippery; reduce your speed.

Prepared By: Paul Leusch SOFR2 (T)	<i>Paul Leusch</i>
---	--------------------

L. Lookouts C. Communications E. Escape Routes S. Safety Zones
BE MINDFUL

Hawaiian Slang

Directions

Mauka- towards the mountain or north

Makai- towards the sea or south

Ka'u- (District) but used as a direction (Ka'u side- to the west) leeward side (dry side)

Hilo-(District) used as a direction (Hilo side- to the east) windward side (rainy side)

Features

A'a - rocky lava

Kipuka- area of vegetation that was surrounded by a lava flow

Lithic- remnant or debitage of where someone manufactured a stone tool

Pahoehoe - Ropey, Smooth lava

Pali- cliff

Pau- finished

Puka- hole

Pu'u- hill on the landscape

Common words and phrases

Brah - Bro, Brother

Bum-by - Later

Choke- means a lot of something

Da - The

Da kine- anything, word used to replace a word if you forget it

Get 'em - Got it

Grinds- food

Howzit?- How is it going?

K den- Ok then, bye

Kokua- to help

Lanai - Porch

Lua- bathroom

Mahalo- Thank you

Nah - No

Ono - Tasty

Opala- trash

Ova deah - In that direction

Pau hana- finished work

Pupu's - Appetizers

Shoots - OK, Sure, Got it, Good bye

Talk story - To discuss

EVACUATION PROCEDURE

⚠ UNSAFE CONDITIONS ⚠

- In the event that conditions change resulting in an unsafe situation for park/incident staff, on-site Operations and Safety personnel will determine the need for, and extent of evacuations. This could include SO₂ and particulate (PM2.5) at “red” levels or higher, continuous serious earthquakes, shifting of the winds causing significant ash fall, etc.
 - **Notification:**
 - Dispatch/Communications radio announcement
 - Send Word Now messaging
 - **What to do:** Without delay, evacuate the affected area using the closest available route. Evacuate eastbound or westbound depending on instructions given in notification, your location, and accessible routes.
 - Primary Route
 - Crater Rim Drive out the entrance station, to Hwy 11
 - Secondary Routes
 - Emergency Access Gates to Hwy 11 from
 - Mauna Loa Rd / Crater Rim Dr.
 - Back of KMC / Pi'i Mauna Rd.
 - Escape Rd / Hwy 11
 - **Rally at:**
 - *Kea'au* : Robert C. Shipman Park (Toward Hilo on Hwy 11)
 - *Panaou'u*: Black Sand Beach (Toward Kona on Hwy 11)



*** CATAclysmic ERUPTION ***



- In the event of a cataclysmic eruption, resulting in a full evacuation of HAVO:
 - **Notification:**
 - Dispatch radio announcement
 - Send Word Now messaging
 - **What to do:** IMMEDIATELY evacuate the area using the closest available route. Evacuate eastbound or westbound depending on your location and accessible routes.
 - Primary Route
 - Crater Rim Drive out the entrance station, to Hwy 11
 - Secondary Routes
 - Emergency Access Gates to Hwy 11 from
 - Mauna Loa Rd / Crater Rim Dr.
 - Back of KMC / Pi'i Mauna Rd.
 - Escape Rd / Hwy 11
 - **Rally at:**
 - *Kea'au* : Robert C. Shipman Park (Toward Hilo on Hwy 11)
 - *Panaou'u*: Black Sand Beach (Toward Kona on Hwy 11)

The Operations Section Chief will work with Division Group Supervisors to ensure all personnel listed on the divisions ICS-204 form are accounted for.

EVACUATION

Medical Plan

1. Incident Name: Keauhou Ranch Brush Fire	2. Operational Period: 8/12/12 – 8/13/18 0700 - 0700
--	---

3. Medical Aid Stations:			
Name	Location	Contact Number(s)/Frequency	Paramedic on Site?
HCFD Station #19A	Cooper Center, 19-4030 Wright Road, Volcano, HI 96785	808-967-7710 (Hours: 0900-1800)	<input checked="" type="checkbox"/> Yes <input type="checkbox"/> No
			<input type="checkbox"/> Yes <input type="checkbox"/> No

4. Transportation (indicate air or ground):			
Ambulance Service	Location	Contact Number(s)/Frequency	Level of Service
HCFD Station #19A	Cooper Center, 19-4030 Wright Road, Volcano, HI 96785	808-967-7710 (Hours: 0900-1800)	<input checked="" type="checkbox"/> ALS <input type="checkbox"/> BLS
HCFD Station #11A	Naalehu, 95-1163 Kaalaiki Rd. Naalehu, HI 96772	808-939-2508	<input checked="" type="checkbox"/> ALS <input type="checkbox"/> BLS
HCFD Station #10	Pahoa, 15-2605 Keaau-Pahoa Rd., Pahoa, HI 96778	808-965-2708	<input checked="" type="checkbox"/> ALS <input type="checkbox"/> BLS
HCFD Station #5	Keaau, 16-579 Old Volcano Rd., Keaau, HI 96749	808-966-5809	<input checked="" type="checkbox"/> ALS <input type="checkbox"/> BLS
			<input type="checkbox"/> ALS <input type="checkbox"/> BLS

5. Hospitals:							
Hospital Name	Address, Latitude & Longitude if Helipad	Contact Number(s)/Frequency	Travel Time		Trauma Center	Burn Center	Helipad
			Air	Ground			
Hilo Medical Center	1190 Wainuenue Avenue Hilo HI 96720	808-923-3000	20	45	<input checked="" type="checkbox"/> Yes Level: 3	<input type="checkbox"/> Yes <input checked="" type="checkbox"/> No	<input checked="" type="checkbox"/> Yes <input type="checkbox"/> No
Queen's Medical Center	1301 Punchbowl St., Honolulu, HI 96813	808-691-1000			<input checked="" type="checkbox"/> Yes Level: 2	<input type="checkbox"/> Yes <input checked="" type="checkbox"/> No	<input checked="" type="checkbox"/> Yes <input type="checkbox"/> No
Straub Medical Center	888 S. King St., Honolulu, HI 96813	808-522-4060			<input checked="" type="checkbox"/> Yes Level: 3	<input checked="" type="checkbox"/> Yes <input type="checkbox"/> No	<input type="checkbox"/> Yes <input checked="" type="checkbox"/> No
Urgent Care Keaau	16-612 Old Volcano Rd., Keaau, HI 96749	808-966-7942		35	<input type="checkbox"/> Yes Level: 0	<input type="checkbox"/> Yes <input checked="" type="checkbox"/> No	<input type="checkbox"/> Yes <input checked="" type="checkbox"/> No
Ka'u Hospital	1 Kamani St., Pahala, HI 96777	808-932-4200		35	<input type="checkbox"/> Yes Level: 0	<input type="checkbox"/> Yes <input checked="" type="checkbox"/> No	<input checked="" type="checkbox"/> Yes <input type="checkbox"/> No

6. Special Medical Emergency Procedures:

Maintain emergency access routes in park to ensure timely response of Hawaii County Fire Department. If a medical emergency occurs, contact HAVO Dispatch via radio or by phone at 808-985-6170.

Check box if aviation assets are utilized for rescue. If assets are used, coordinate with Air Operations.

7. Prepared by (Medical Unit Leader): Name: Paul Tompkins

8. Approved by (Safety Officer): Name: Paul Leusch

ICS 206	Medical Plan	Date/Time: 8/11/2018 2030
---------	--------------	---------------------------

MEDICAL PLAN (ICS 206 WF)

Controlled Unclassified Information//Basic

Medical Incident Report

FOR A NON-EMERGENCY INCIDENT, WORK THROUGH CHAIN OF COMMAND TO REPORT AND TRANSPORT INJURED PERSONNEL AS NECESSARY.

FOR A MEDICAL EMERGENCY: IDENTIFY ON SCENE INCIDENT COMMANDER BY NAME AND POSITION AND ANNOUNCE "MEDICAL EMERGENCY" TO INITIATE RESPONSE FROM IMT COMMUNICATIONS/DISPATCH.

Use the following items to communicate situation to communications/dispatch.

1. CONTACT COMMUNICATIONS / DISPATCH (Verify correct frequency prior to starting report)

Ex: "Communications, Div. Alpha. Stand-by for Emergency Traffic."

2. INCIDENT STATUS: Provide incident summary (including number of patients) and command structure.

Ex: "Communications, I have a Red priority patient, unconscious, struck by a falling tree. Requesting air ambulance to Forest Road 1 at (Lat./Long.) This will be the Trout Meadow Medical, IC is TFLD Jones. EMT Smith is providing medical care."

Severity of Emergency / Transport Priority	<input type="checkbox"/> RED / PRIORITY 1 Life or limb threatening injury or illness. Evacuation need is IMMEDIATE <i>Ex: Unconscious, difficulty breathing, bleeding severely, 2° - 3° burns more than 4 palm sizes, heat stroke, disoriented.</i> <input type="checkbox"/> YELLOW / PRIORITY 2 Serious Injury or illness. Evacuation may be DELAYED if necessary. <i>Ex: Significant trauma, unable to walk, 2° - 3° burns not more than 1-3 palm sizes.</i> <input type="checkbox"/> GREEN / PRIORITY 3 Minor Injury or illness. Non-Emergency transport <i>Ex: Sprains, strains, minor heat-related illness.</i>	
Nature of Injury or Illness & Mechanism of Injury		Brief Summary of Injury or Illness <i>(Ex: Unconscious, Struck by Falling Tree)</i>
Transport Request		Air Ambulance / Short Haul/Hoist Ground Ambulance / Other
Patient Location		Descriptive Location & Lat. / Long. (WGS84)
Incident Name		Geographic Name + "Medical" <i>(Ex: Trout Meadow Medical)</i>
On-Scene Incident Commander		Name of on-scene IC of Incident within an Incident <i>(Ex: TFLD Jones)</i>
Patient Care		Name of Care Provider <i>(Ex: EMT Smith)</i>

3. INITIAL PATIENT ASSESSMENT: Complete this section for each patient as applicable (start with the most severe patient)

Patient Assessment: See IRPG page 106

Treatment:

4. TRANSPORT PLAN:

Evacuation Location (if different): *(Descriptive Location (drop point, intersection, etc.) or Lat. / Long.)* Patient's ETA to Evacuation Location:

Helispot / Extraction Site Size and Hazards:

5. ADDITIONAL RESOURCES / EQUIPMENT NEEDS:

Example: Paramedic/EMT, Crews, Immobilization Devices, AED, Oxygen, Trauma Bag, IV/Fluid(s), Splints, Rope rescue, Wheeled litter, HAZMAT, Extrication

6. COMMUNICATIONS: Identify State Air/Ground EMS Frequencies and Hospital Contacts as applicable

Function	Channel Name/Number	Receive (RX)	Tone/NAC *	Transmit (TX)	Tone/NAC *
COMMAND					
AIR-TO-GRND					
TACTICAL					

7. CONTINGENCY: Considerations: If primary options fail, what actions can be implemented in conjunction with primary evacuation method? Be thinking ahead.

8. ADDITIONAL INFORMATION: Updates/Changes, etc.

REMEMBER: Confirm ETA's of resources ordered. Act according to your level of training. Be Alert. Keep Calm. Think Clearly. Act Decisively.

Suppression Repair

0700 08/12 to 0700 08/13/2018

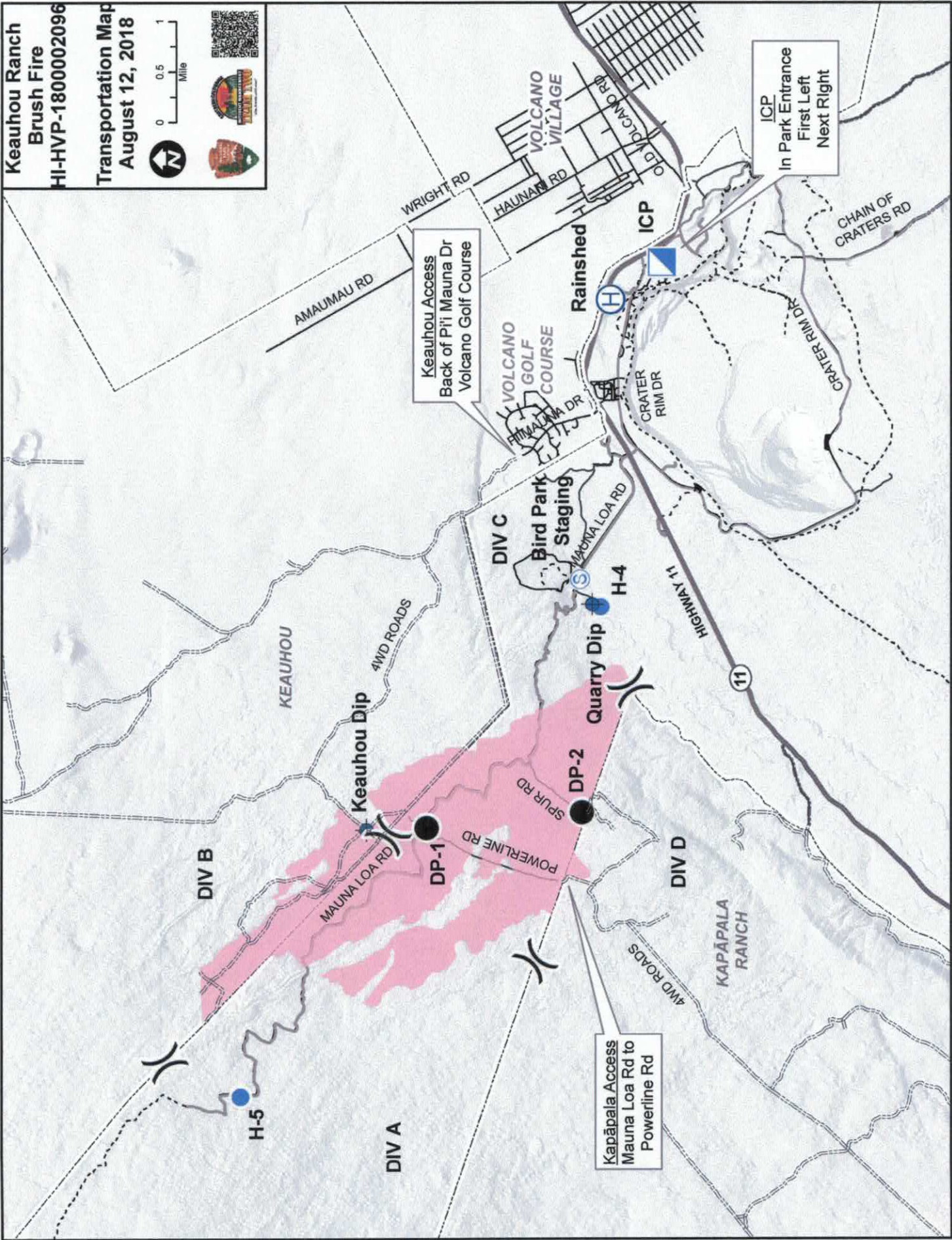
Per resource advisor, remove snags that have the potential to impact the roadway and harm vehicles and persons. Stumps should be flush cut to within 3 inches of the ground. Slash can be left in place and at least 4 ft away from road shoulder. Removal is focused within a 30 ft corridor on each side of the Mauna Loa Road. Removal includes trees with 80% or greater char height on trunks. Trees that are less than 80% char height do not need to be removed unless they show clear evidence of failing.

Beyond the 30 ft corridor, trees that show clear signs of failing and the potential to impact the roadway should be removed.

	
Do not remove	Remove

Keauhou Ranch
Brush Fire
HI-HVP-1800002096

Transportation Map
August 12, 2018



Keauhou Access
Back of Pii Mauna Dr
Volcano Golf Course

ICP
In Park Entrance
First Left
Next Right

Kapāpala Access
Mauna Loa Rd to
Powerline Rd

