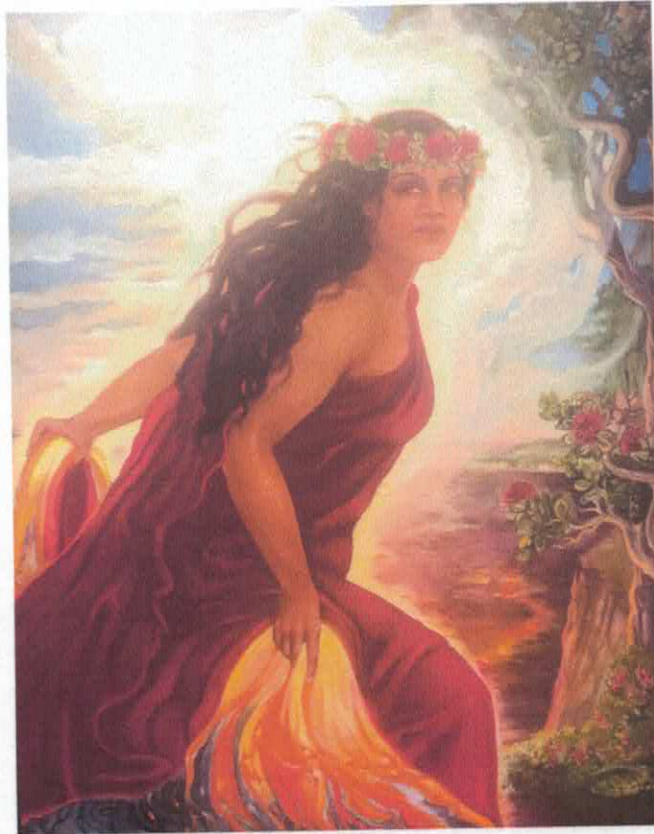


INCIDENT ACTION PLAN



Pele

**HI-HVP-1800002096
PPL25B 1502**

August 13 0700 - August 14 0700, 2018

Keauhou Ranch Brush Fire



IAP



MAPS



"Adapt...Improvise...and Overcome"

INCIDENT OBJECTIVES	Incident Name Keauhou Ranch Brush Fire	Date 8/12/2018	Time 2000
----------------------------	--	--------------------------	---------------------

Operational Period
Monday, August 13, 0700 to Tuesday, August 14, 2018 0700

General Control Objectives for the Incident (Include alternatives)

LEADERS INTENT:

The highest priority will be focused on minimizing risk to firefighters and the public by continually using the risk management process. It is the expectation that every person assigned in any type of leadership role provides the appropriate mitigation measures prior to engaging in any activity.

Coordinate actions with Volcano Emergency Incident Command Team to provide appropriate responder and public evacuation time frames.

INCIDENT OBJECTIVES:

- Adopt decisions and actions that thoughtfully consider firefighter and public safety especially with respect to communications, driving, aviation and volcanic activity.
- Maintain full integration under incident command ensuring stakeholder concerns are addressed for the incident.
- Coordinate closely with local resources in order to place a high priority on reducing the threat to Kipuka Ki, Kipuka Puaulu, Kapapala Ranch, Keauhou Ranch, rare and protected plant and animal species, cultural resources and associated infrastructure.
- Where practical, minimize suppression impacts through the use of existing natural barriers and trails.
- Utilize resources to maximize efficiency and minimize cost expenditures.

CONTROL OBJECTIVES:

Keep the fire:

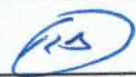
- East of Keamoku Lava flow and Kapapala Ranch to protect the ranch grass lands and evacuation routes associated with HAVO Volcanic activity.
- West of Keamoku Lava Flow and the Quarry to restrict the fire size, thereby reducing exposure to Keauhou and to firefighters and the public.
- South of the top of Mauna Loa strip road, Mauna Loa lookout shelter to protect Mauna Loa trail, native forests and threatened and endangered species.
- North of Kipuka Ki, Quarry and Kapapala Ranch to protect evacuation routes associated with HAVO Volcanic activity, Namakani Paio campground, Highway 11 and associated infrastructure.

Weather Forecast for Period

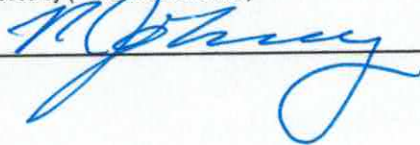
Attachments (mark if attached)

X	Organization List - ICS 203	X	Medical Plan - ICS 206	X	Safety Message
X	Div. Assignment Lists - ICS 204	X	Incident Map	X	Weather
X	Communications Plan - ICS 205	X	Traffic Plan	<input checked="" type="checkbox"/>	Human Recourses

Prepared by (Planning Section Chief)
Ken Bates, PSC 2



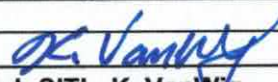
Approved by (Incident Commander)



ORGANIZATION ASSIGNMENT (ICS 203)

1. Incident Name Keauhou Ranch Brush Fire		2. Operational Period:		Date From: 8/13/2018	Date To: 8/14/2018
				Time From: 0700	Time To: 0700
3. Incident Commander(s) and Command Staff:			7. Operations Section:		
IC	Nickie Johnny / Matt Conklin (t)	Day Operations	Mike Koontz		
Safety Officer	Paul Tompkins / Paul Leusch (t) / Paul Mancuso (t)	Night Operations			
Public Info. Officer	Dan Patterson	Planning Ops	Don Smith		
Liaison Officer	Larry LaVogue	Branch			
Human Resources		Branch Director			
4. Agency/Organization Representatives:		Division/Group			
Hawaii Volcanoes National Park	Cindy Orlando	Division/Group			
Hawaii Volcanoes National Park	Greg Funderburk	Branch			
Hawaii County Fire	Darren Rosario	Branch Director			
Kapapala Ranch	Lani Cran	Division/Group	A / B	Brian Gilmore / Justin Yoniles (t)	
Keauhou Ranch	Keala Kanakaole	Division/Group	C	Rob Noxon / Nat Osburn (t)	
5. Planning Section:		Division/Group	D	John Owings	
Chief	Ken Bates				
Deputy					
Resources Unit	Josh Clark	Branch			
Situation Unit	Ken VanWig	Branch Director			
Resource Advisor	Rhonda Loh / Summer Roper	Division/Group			
Demobilization Unit		Division/Group			
GISS	Dawn Hutchinson / Mark Wasser (t)				
		Night			
		Division/Group	Night	Unstaffed	
6. Logistics Section					
Chief	Martie Hale				
Deputy		Air Operations Branch			
Technical Support Spec	Brett Davidson	Air Ops Branch Dir.	Joann Overacker		
Ordering / Food Unit	Morgan Keck	ASGS			
Supply Unit					
Facilities Unit		8. Finance/Administration Section:			
Ground Support Unit		Chief	Karen Bauman		
RCDM		Deputy			
Equipment Manager		Time Unit			
Communications Unit	Chris Perry	Procurement Unit			
Medical Unit	Gena Fowlkes	Comp/Claims Unit			
		Cost Unit			
7. Prepared by:		Name: K. Bates	Position/Title: PSC2	Signature:	
ICS 203	IAP Page	Date/Time: 8/12/2018 2000			

WEATHER AND FIRE BEHAVIOR FORECAST

FORECAST NUMBER: 3	OPERATIONAL PERIOD: August 13 - 14, 2018
FIRE NAME: Keauhou Ranch Brush Fire	Monday 0700 – Tuesday 0700
DATE ISSUED: 8/12/18 1700hrs	
UNIT: HI-HVP-1800002096	SIGNED: 
	Typed/printed: SITL, K. VanWig

INPUTS

WEATHER SUMMARY: Warming and Drying expected to continue.

DISCUSSION... Moderate northeast winds and mostly dry weather can be expected through Monday. Any passing showers will be light and brief.

MONDAY

Sky/weather.....Mostly sunny
CWR.....10 percent
LAL.....1
Max temperature.....Around 72
Min humidity.....47-53 percent
Wind (20 ft).....Northeast winds 5 to 12 mph
Mixing height.....2100-2200 ft AGL
Transport winds.....East around 10 mph

MONDAY NIGHT

Sky/weather.....Partly cloudy. Isolated showers
CWR.....20 percent
LAL.....1
Min temperature.....Around 53
Max humidity.....100 percent
Wind (20 ft).....Northeast winds 5 to 6 mph
Mixing height.....2000-2200 ft AGL
Transport winds.....East around 10 mph

LAL: 1.....CWR: 10%.....KBDI.....585

OUTPUTS FIRE BEHAVIOR

GENERAL:


The fires main influence is heavy fuels in Koa and Ohi'a forested area with non-native grass and brush understory. The fire has been dependent upon wind alignment. Fire still has potential to spread into light flashy fuels as they dry under the lower humidity. Winds could cause fire weakened trees to fall unexpectedly


Fire potential: Surface fire spread 1-3 ch/hr with headfire, 0.5 ch/hr backing and flanking.


Fire Behavior for this operational period will be minimal as fuel moistures are still high. Expect creeping and smoldering as fuels dry and resident fire in the heavier fuels to become active in the afternoon.

SAFETY

- Windy conditions today with Lower Relative Humidity...Fuels will become more receptive to spread fire.
- Falling snag hazard with elevated wind speeds.
- Keep up on your situational awareness for any increase in fire activity.

INCIDENT RADIO COMMUNICATIONS PLAN		Incident Name			Date/Time Prepared			Operational Period Date/Time		
INCIDENT RADIO COMMUNICATIONS PLAN		Keauhou Ranch Brush Fire			08/12/18 1600			08/13/18-0700--08/14/18-0700		
Zn / Ch	Function	Channel Name/Trunked Talkgroup	Assignment	RX Freq	RX Tone/NAC	TX Freq	TX Tone/NAC	Mode A, D, M	Remarks	
1	Dispatch	MLOA D	All Divisions	170.3625	131.8/1318	164.1625	131.8/1318	D	Volcano Dispatch Digital	
2	Dispatch	MLOA A	All Divisions	170.3625	131.8/526	164.1625	131.8/526	A	Volcano Dispatch Analog	
3	Tactical	NIFC T1	DIV A/B	168.0500	0.0	168.0500	0.0	A		
4	Tactical	NIFC T2	DIV C	168.2000	0.0	168.2000	0.0	A		
5	Tactical	NIFC T3	D/Dozer/contingency	168.6000	0.0	168.6000	0.0	A		
6	Tactical	NIFC T5	Unassigned	166.7250	0.0	166.7250	0.0	A		
7	Tactical	NIFC T6	Unassigned	166.7750	0.0	166.7750	0.0	A		
8	Air to Ground TAC	Air Tac	All Divisions	166.6125	0.0	166.6125	0.0	A		
9		Blank								
10		Blank								
11		Blank								
12		Blank								
13		Blank								
14		Blank								
15		Blank								
16/20	Emergency only	GUARD	All Divisions	168.6250	0.0	168.6250	110.9	A	T1 - AIR GUARD - emerg. use only	
Prepared By (Communications Unit Leader)					Incident Location			Latitude, Longitude		
Chris Perry		Operations and Divisions have Hawaii County Fire Dept radios to communicate with Copter 1			County			1/14/14 v.5		

INCIDENT RADIO COMMUNICATIONS PLAN		Incident Name			Date/Time Prepared			Operational Period Date/Time		
		Keaou Ranch Brush Fire			08/12/18 1600			08/13/18-0700--08/14/18-0700		
Zn / Ch	Function	Channel Name/Trunked Talkgroup	Assignment	RX Freq	RX Tone/NAC	TX Freq	TX Tone/NAC	Mode A, D, M	Remarks	
1	Dispatch	MLOA D	All Divisions	170.3625	131.8/1318	164.1625	131.8/1318	D	Volcano Dispatch Digital	
2	Dispatch	MLOA A	All Divisions	170.3625	131.8/526	164.1625	131.8/526	A	Volcano Dispatch Analog	
3	Tactical	NIFC T1	DIV A/B	168.0500	0.0	168.0500	0.0	A		
4	Tactical	NIFC T2	DIV C	168.2000	0.0	168.2000	0.0	A		
5	Tactical	NIFC T3	D/Dozer/contingency	168.6000	0.0	168.6000	0.0	A		
6	Tactical	NIFC T5	Unassigned	166.7250	0.0	166.7250	0.0	A		
7	Tactical	NIFC T6	Unassigned	166.7750	0.0	166.7750	0.0	A		
8	Air to Ground TAC	Air Tac	All Divisions	166.6125	0.0	166.6125	0.0	A		
9		Blank								
10		Blank								
11		Blank								
12		Blank								
13		Blank								
14		Blank								
15		Blank								
16/20	Emergency only	GUARD	All Divisions	168.6250	0.0	168.6250	110.9	A	T1 - AIR GUARD - emerg. use only	
Prepared By (Communications Unit Leader)										
Chris Perry 										
Operations and Divisions have Hawaii County Fire Dept radios to communicate with Copter 1										
							Latitude, Longitude		1/14/14 v.5	

INCIDENT RADIO COMMUNICATIONS PLAN		Incident Name			Date/Time Prepared			Operational Period Date/Time		
		Keauhou Ranch Brush Fire			08/12/18 1600			08/13/18-0700--08/14/18-0700		
Zn / Ch	Function	Channel Name/Trunked Talkgroup	Assignment	RX Freq	RX Toner/NAC	TX Freq	TX Toner/NAC	Mode A, D, M	Remarks	
1	Dispatch	MLOA D	All Divisions	170.3625	131.8/1318	164.1625	131.8/1318	D	Volcano Dispatch Digital	
2	Dispatch	MLOA A	All Divisions	170.3625	131.8/526	164.1625	131.8/526	A	Volcano Dispatch Analog	
3	Tactical	NIFC T1	DIV A/B	168.0500	0.0	168.0500	0.0	A		
4	Tactical	NIFC T2	DIV C	168.2000	0.0	168.2000	0.0	A		
5	Tactical	NIFC T3	D/Dozer/contingency	168.6000	0.0	168.6000	0.0	A		
6	Tactical	NIFC T5	Unassigned	166.7250	0.0	166.7250	0.0	A		
7	Tactical	NIFC T6	Unassigned	166.7750	0.0	166.7750	0.0	A		
8	Air to Ground TAC	Air Tac	All Divisions	166.6125	0.0	166.6125	0.0	A		
9		Blank								
10		Blank								
11		Blank								
12		Blank								
13		Blank								
14		Blank								
15		Blank								
16/20	Emergency only	GUARD	All Divisions	168.6250	0.0	168.6250	110.9	A	T1 - AIR GUARD - emerg. use only	
Prepared By (Communications Unit Leader)					Incident Location			Latitude, Longitude		
Chris Perry					County					
Operations and Divisions have Hawaii County Fire Dept radios to communicate with Copter 1										
										1/14/14 v.5

AIR OPERATIONS SUMMARY

1. INCIDENT NAME: Keaouhou Ranch Brush Fire	2. PREPARED BY: JoAnn Overacker <i>JoAnn Overacker</i>	3. PREPARED DATE/TIME: 8/12/18 1600hrs 5. TFR: # 8/7820 Altitude: MSL 20,000 5 NM Radius of 192419N X 1551652W
4. REMARKS (Safety Notes, Hazards, Air Operations Special Equipment, etc.): H-4/Quarry Dip - 19 26.077N X 155 17.437W H-5 - 19 29.118N X 155 23.027W Keaouhou Dip - 19 28.053N X 155 20.542		

6. PERSONNEL		7. FREQUENCIES			8. FIXED WING	
AOBD:	Phone	AM	FM	# Avail / Type/ Make-Model / FAA N# / Base(s)		
JoAnn Overacker	209-559-1617	AIR/AIR FW:		AIRTANKERS		
HEGB: Jeremy Stocks	530-249-9932	AIR/AIR RW:	122.9	LEADPLANES		
HEGB(T) Arnold Nakata	808-238-6325			AIR TACTICAL PLATFORM		
HECM: Garrett Hanna	530-246-6089					
HECM(T): Thomas Hughes	808-640-1084	AIR/GROUND	166.6125			
		DECK:				
		COMMAND:				
		Air Guard	168.625 Tone 1			

9. HELICOPTERS (Use Additional Sheets as Necessary)													
FAA N#	TY	MAKE/MODEL	BASE	AVAIL	START	REMARKS	FAA N#	TY	MAKE/MODEL	BASE	AVAIL	START	REMARKS
67F	III	Hughes 550	H-4	0830	0730	Available at 1000							
C-1	III	Hughes 550	H-4			Call when needed							
						Will be at Hilo							

10. TASK/MISSION/ASSIGNMENT (Use ICS-220a if additional space needed; Type/Function includes: Air Tactical, Retardant, Recon, Personnel Transport, Water Dropping, etc.)			
TYPE/FUNCTION	NAME OF PERSONNEL OR CARGO (if applicable) OR INSTRUCTIONS FOR TACTICAL AIRCRAFT	MISSION START	FLY FROM FLY TO
Recon	As needed for Ops and Divisions.		
Bucket Drops	As needed.		
Cargo	Retrieve hose and back pack pumps from the line.		

INCIDENT RADIO COMMUNICATIONS PLAN

Incident Name

Keauhou Ranch Brush Fire

Date/Time Prepared

08/12/18 1600

Operational Period Date/Time

08/13/18-0700--08/14/18-0700

Zn / Ch	Function	Channel Name/Trunked Talkgroup	Assignment	RX Freq	RX Tone/NAC	TX Freq	TX Tone/NAC	Mode A, D, M	Remarks
1	Dispatch	MLOA D	All Divisions	170.3625	131.8/1318	164.1625	131.8/1318	D	Volcano Dispatch Digital
2	Dispatch	MLOA A	All Divisions	170.3625	131.8/526	164.1625	131.8/526	A	Volcano Dispatch Analog
3	Tactical	NIFC T1	DIV A/B	168.0500	0.0	168.0500	0.0	A	
4	Tactical	NIFC T2	DIV C	168.2000	0.0	168.2000	0.0	A	
5	Tactical	NIFC T3	D/Dozer/contingency	168.6000	0.0	168.6000	0.0	A	
6	Tactical	NIFC T5	Unassigned	166.7250	0.0	166.7250	0.0	A	
7	Tactical	NIFC T6	Unassigned	166.7750	0.0	166.7750	0.0	A	
8	Air to Ground TAC	Air Tac	All Divisions	166.6125	0.0	166.6125	0.0	A	
9		Blank							
10		Blank							
11		Blank							
12		Blank							
13		Blank							
14		Blank							
15		Blank							
16/20	Emergency only	GUARD	All Divisions	168.6250	0.0	168.6250	110.9	A	T1 - AIR GUARD - emerg. use only

Incident Location

County

Latitude, Longitude

Prepared By (Communications Unit Leader)

Chris Perry

Operations and Divisions have Hawaii County Fire Dept radios to communicate with Copter 1

1/14/14 v.5



Health & Safety Message

Incident: Keauhou Ranch Brush Fire HI-HVP-1800002096	Date/Op Period: Aug. 13-14, 2018 0700-0700 hrs.
--	---

Hazards & Risks

Hazard Tree Safety: Keep in mind: current and forecasted winds, steep slopes, potential for trees to domino, tree species, soil conditions, and root depth.

Hazard Tree Indicators: Trees burning for any period of time, high risk tree species (rot and shallow roots), dead, broken, or burning tops and limbs overhead, leaning or hung-up trees (refer to IRPG page 22).

Hazard Control: Eliminate the hazards with qualified sawyers, or heavy equipment, avoid hazards by designating “No Work Zones” (flag, sign, and map). If a tree is too dangerous to cut flag the area, sign the area around the tree(s) and move on. Post lookouts, and utilize road/traffic controls in high risk areas.

Procedural Felling Operations: Assess the situation, complete a hazard analysis, and establish cutting area control (refer to IRPG pg. 85).

Firefighter Health & Hydration: It's important to stay hydrated throughout the day. Water is important to the body at all times, but especially in warm weather. It keeps the body from overheating. We all know this but don't forget to hydrate because this area is cooler than our typical fire response areas.

:

Prepared by: Paul Mancuso SOFR2 (t)	
-------------------------------------	--

L. Lookouts C. Communications E. Escape Routes S. Safety Zones
BE MINDFUL

Hawaiian Slang

Directions

Mauka- towards the mountain or north

Makai- towards the sea or south

Ka'u- (District) but used as a direction (Ka'u side- to the west) leeward side (dry side)

Hilo-(District) used as a direction (Hilo side- to the east) windward side (rainy side)

Features

A'a - rocky lava

Kipuka- area of vegetation that was surrounded by a lava flow

Lithic- remnant or debitage of where someone manufactured a stone tool

Pahoehoe - Ropey, Smooth lava

Pali- cliff

Pau- finished

Puka- hole

Pu'u- hill on the landscape

Common words and phrases

Brah - Bro, Brother

Bum-by - Later

Choke- means a lot of something

Da - The

Da kine- anything, word used to replace a word if you forget it

Get 'em - Got it

Grinds- food

Howzit?- How is it going?

K den- Ok then, bye

Kokua- to help

Lanai - Porch

Lua- bathroom

Mahalo- Thank you

Nah - No

Ono - Tasty

Opala- trash

Ova deah - In that direction

Pau hana- finished work

Pupu's - Appetizers

Shoots - OK, Sure, Got it, Good bye

Talk story - To discuss

EVACUATION PROCEDURE

⚠ UNSAFE CONDITIONS ⚠

- In the event that conditions change resulting in an unsafe situation for park/incident staff, on-site Operations and Safety personnel will determine the need for, and extent of evacuations. This could include SO₂ and particulate (PM2.5) at "red" levels or higher, continuous serious earthquakes, shifting of the winds causing significant ash fall, etc.
 - **Notification:**
 - Dispatch/Communications radio announcement
 - Send Word Now messaging
 - **What to do:** Without delay, evacuate the affected area using the closest available route. Evacuate eastbound or westbound depending on instructions given in notification, your location, and accessible routes.
 - Primary Route
 - Crater Rim Drive out the entrance station, to Hwy 11
 - Secondary Routes
 - Emergency Access Gates to Hwy 11 from
 - Mauna Loa Rd / Crater Rim Dr.
 - Back of KMC / Pi'i Mauna Rd.
 - Escape Rd / Hwy 11
 - **Rally at:**
 - *Kea'au* : Robert C. Shipman Park (Volcano Rd. Kea'au, HI. 96749)
 - *Pahoa*: Black Sand Beach (96-876 Government Rd. Pahoa, HI. 96778)



*** CATAclySMIC ERUPTION ***

- In the event of a cataclysmic eruption, resulting in a full evacuation of HAVO:
 - **Notification:**
 - Dispatch radio announcement
 - Send Word Now messaging
 - **What to do:** IMMEDIATELY evacuate the area using the closest available route. Evacuate eastbound or westbound depending on your location and accessible routes.
 - Primary Route
 - Crater Rim Drive out the entrance station, to Hwy 11
 - Secondary Routes
 - Emergency Access Gates to Hwy 11 from
 - Mauna Loa Rd / Crater Rim Dr.
 - Back of KMC / Pi'i Mauna Rd.
 - Escape Rd / Hwy 11
 - **Rally at:**
 - *Kea'au* : Robert C. Shipman Park (Volcano Rd. Kea'au, HI. 96749)
 - *Pahoa*: Black Sand Beach (96-876 Government Rd. Pahoa, HI. 96778)

The Operations Section Chief will work with Division Group Supervisors to ensure all personnel listed on the divisions ICS-204 form are accounted for.

EVACUATION

2018 HAVO Increased Volcanic Activity Evacuation Map

Hawai'i Volcanoes National Park

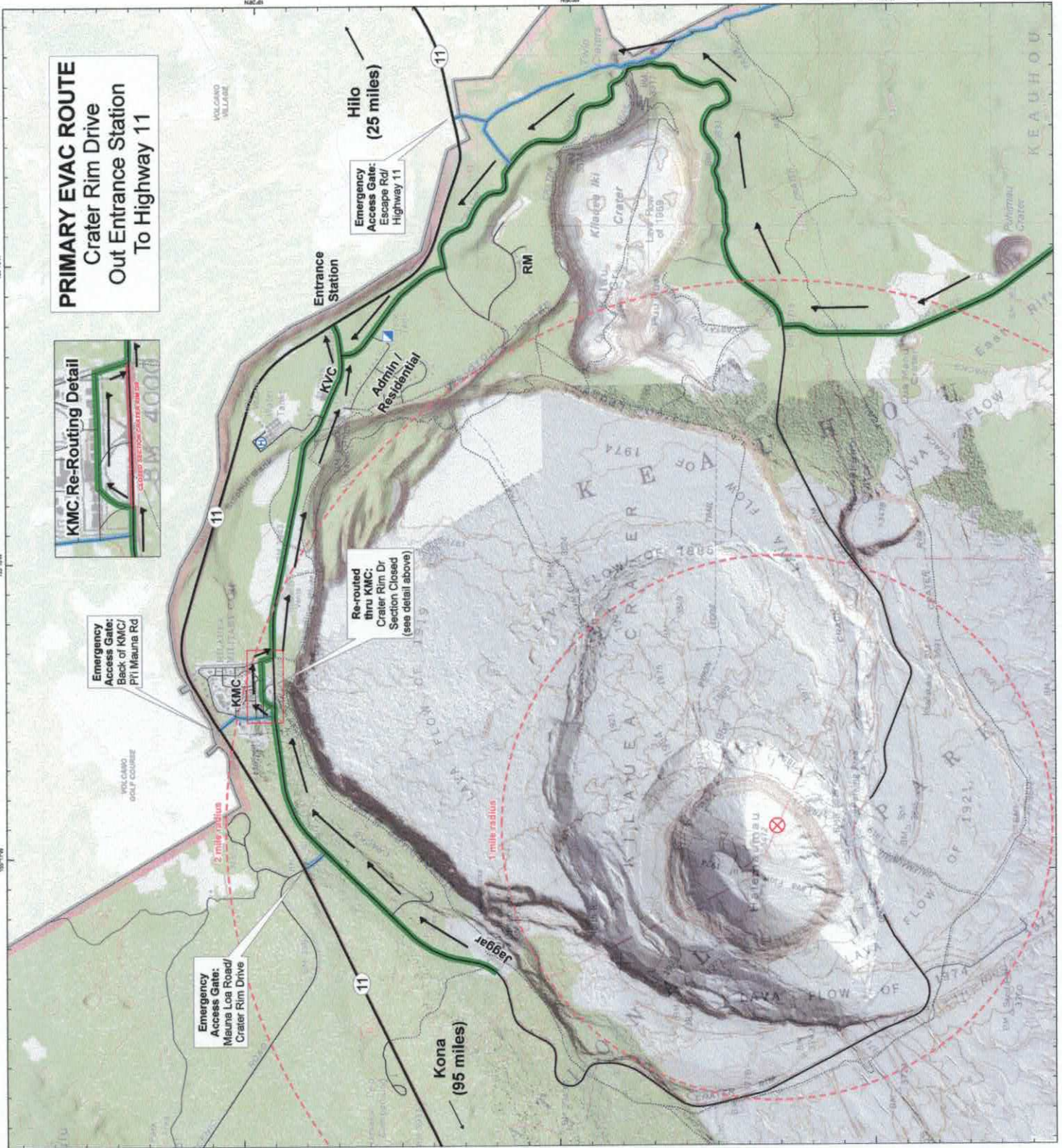
August 9, 2018



- Legend**
- Former Lava Lake
 - Helibase
 - Incident Command Post
 - Halemauau Buffers
 - HAVO Roads & Trails
 - Highway 11
 - Secondary
 - Light Duty
 - Residential
 - Unpaved
 - Trail
 - HAVO Boundary
 - Evacuation Routes**
 - Primary
 - Secondary



NACBS Datum
 Mark Wasser
 David Bantaz
 NPS GIS
 8/9/2018
 10:20 Hours



Medical Plan

1. Incident Name: Keauhou Ranch Brush Fire		2. Operational Period: 8/13/12 – 8/14/18 0700 - 0700					
3. Medical Aid Stations:							
Name	Location	Contact Number(s)/Frequency		Paramedic on Site?			
HCFD Station #19A	Cooper Center, 19-4030 Wright Road, Volcano, HI 96785	808-967-7710 (Hours: 0900-1800)		<input checked="" type="checkbox"/> Yes <input type="checkbox"/> No			
				<input type="checkbox"/> Yes <input type="checkbox"/> No			
4. Transportation (indicate air or ground):							
Ambulance Service	Location	Contact Number(s)/Frequency		Level of Service			
HCFD Station #19A	Cooper Center, 19-4030 Wright Road, Volcano, HI 96785	808-967-7710 (Hours: 0900-1800)		<input checked="" type="checkbox"/> ALS <input type="checkbox"/> BLS			
HCFD Station #11A	Naalehu, 95-1163 Kaalaiki Rd. Naalehu, HI 96772	808-939-2508		<input checked="" type="checkbox"/> ALS <input type="checkbox"/> BLS			
HCFD Station #10	Pahoa, 15-2605 Keaau-Pahoa Rd., Pahoa, HI 96778	808-965-2708		<input checked="" type="checkbox"/> ALS <input type="checkbox"/> BLS			
HCFD Station #5	Keaau, 16-579 Old Volcano Rd., Keaau, HI 96749	808-966-5809		<input checked="" type="checkbox"/> ALS <input type="checkbox"/> BLS			
				<input type="checkbox"/> ALS <input type="checkbox"/> BLS			
5. Hospitals:							
Hospital Name	Address, Latitude & Longitude if Helipad	Contact Number(s)/Frequency	Travel Time		Trauma Center	Burn Center	Helipad
			Air	Ground			
Hilo Medical Center	1190 Wainuenue Avenue Hilo HI 96720	808-923-3000	20	45	<input checked="" type="checkbox"/> Yes Level: 3	<input type="checkbox"/> Yes <input checked="" type="checkbox"/> No	<input checked="" type="checkbox"/> Yes <input type="checkbox"/> No
Queen's Medical Center	1301 Punchbowl St., Honolulu, HI 96813	808-691-1000			<input checked="" type="checkbox"/> Yes Level: 2	<input type="checkbox"/> Yes <input checked="" type="checkbox"/> No	<input checked="" type="checkbox"/> Yes <input type="checkbox"/> No
Straub Medical Center	888 S. King St., Honolulu, HI 96813	808-522-4060			<input checked="" type="checkbox"/> Yes Level: 3	<input checked="" type="checkbox"/> Yes <input type="checkbox"/> No	<input type="checkbox"/> Yes <input checked="" type="checkbox"/> No
Urgent Care Keaau	16-612 Old Volcano Rd., Keaau, HI 96749	808-966-7942		35	<input type="checkbox"/> Yes Level: 0	<input type="checkbox"/> Yes <input checked="" type="checkbox"/> No	<input type="checkbox"/> Yes <input checked="" type="checkbox"/> No
Ka'u Hospital	1 Kamani St., Pahala, HI 96777	808-932-4200		35	<input type="checkbox"/> Yes Level: 0	<input type="checkbox"/> Yes <input checked="" type="checkbox"/> No	<input checked="" type="checkbox"/> Yes <input type="checkbox"/> No
6. Special Medical Emergency Procedures:							
<p>Maintain emergency access routes in park to ensure timely response of Hawaii County Fire Department. If a medical emergency occurs, contact HAVO Dispatch via radio or by phone at 808-985-6170.</p> <p><input type="checkbox"/> Check box if aviation assets are utilized for rescue. If assets are used, coordinate with Air Operations.</p>							
7. Prepared by (Medical Unit Leader): Name: Gena Fowlkes							
8. Approved by (Safety Officer): Name: Paul Leusch							
ICS 206	Medical Plan	Date/Time: 8/12/2018 2000					

MEDICAL PLAN (ICS 206 WF)

Controlled Unclassified Information//Basic

Medical Incident Report					
FOR A NON-EMERGENCY INCIDENT, WORK THROUGH CHAIN OF COMMAND TO REPORT AND TRANSPORT INJURED PERSONNEL AS NECESSARY.					
FOR A MEDICAL EMERGENCY: IDENTIFY ON SCENE INCIDENT COMMANDER BY NAME AND POSITION AND ANNOUNCE "MEDICAL EMERGENCY" TO INITIATE RESPONSE FROM IMT COMMUNICATIONS/DISPATCH.					
Use the following items to communicate situation to communications/dispatch.					
1. CONTACT COMMUNICATIONS / DISPATCH (Verify correct frequency prior to starting report) <i>Ex: "Communications, Div. Alpha. Stand-by for Emergency Traffic."</i>					
2. INCIDENT STATUS: Provide incident summary (including number of patients) and command structure. <i>Ex: "Communications, I have a Red priority patient, unconscious, struck by a falling tree. Requesting air ambulance to Forest Road 1 at (Lat./Long.) This will be the Trout Meadow Medical, IC is TFLD Jones. EMT Smith is providing medical care."</i>					
Severity of Emergency / Transport Priority	<input type="checkbox"/> RED / PRIORITY 1 Life or limb threatening injury or illness. Evacuation need is IMMEDIATE <i>Ex: Unconscious, difficulty breathing, bleeding severely, 2° - 3° burns more than 4 palm sizes, heat stroke, disoriented.</i> <input type="checkbox"/> YELLOW / PRIORITY 2 Serious injury or illness. Evacuation may be DELAYED if necessary. <i>Ex: Significant trauma, unable to walk, 2° - 3° burns not more than 1-3 palm sizes.</i> <input type="checkbox"/> GREEN / PRIORITY 3 Minor injury or illness. Non-Emergency transport <i>Ex: Sprains, strains, minor heat-related illness.</i>				
Nature of Injury or Illness & Mechanism of Injury			<i>Brief Summary of Injury or Illness (Ex: Unconscious, Struck by Falling Tree)</i>		
Transport Request			<i>Air Ambulance / Short Haul/Hoist Ground Ambulance / Other</i>		
Patient Location			<i>Descriptive Location & Lat. / Long. (WGS84)</i>		
Incident Name			<i>Geographic Name + "Medical" (Ex: Trout Meadow Medical)</i>		
On-Scene Incident Commander			<i>Name of on-scene IC of Incident within an Incident (Ex: TFLD Jones)</i>		
Patient Care			<i>Name of Care Provider (Ex: EMT Smith)</i>		
3. INITIAL PATIENT ASSESSMENT: Complete this section for each patient as applicable (start with the most severe patient)					
Patient Assessment: See IRPG page 106					
Treatment:					
4. TRANSPORT PLAN:					
Evacuation Location (if different): (Descriptive Location (drop point, intersection, etc.) or Lat. / Long.) Patient's ETA to Evacuation Location:					
Helispot / Extraction Site Size and Hazards:					
5. ADDITIONAL RESOURCES / EQUIPMENT NEEDS:					
<i>Example: Paramedic/EMT, Crews, Immobilization Devices, AED, Oxygen, Trauma Bag, IV/Fluid(s), Splints, Rope rescue, Wheeled litter, HAZMAT, Extrication</i>					
6. COMMUNICATIONS: Identify State Air/Ground EMS Frequencies and Hospital Contacts as applicable					
Function	Channel Name/Number	Receive (RX)	Tone/NAC *	Transmit (TX)	Tone/NAC *
COMMAND					
AIR-TO-GRND					
TACTICAL					
7. CONTINGENCY: Considerations: If primary options fail, what actions can be implemented in conjunction with primary evacuation method? Be thinking ahead.					
8. ADDITIONAL INFORMATION: Updates/Changes, etc.					
REMEMBER: Confirm ETA's of resources ordered. Act according to your level of training. Be Alert. Keep Calm. Think Clearly. Act Decisively.					

Suppression Repair

0700 08/13 to 0700 08/14/2018

Per resource advisor, remove snags that have the potential to impact the roadway and harm vehicles and persons. Stumps should be flush cut to within 3 inches of the ground. Slash can be left in place and at least 4 ft away from road shoulder. Removal is focused within a 30 ft corridor on each side of the Mauna Loa Road. Removal includes trees with 80% or greater char height on trunks. Trees that are less than 80% char height do not need to be removed unless they show clear evidence of failing.

Beyond the 30 ft corridor, trees that show clear signs of failing and the potential to impact the roadway should be removed.



Do not remove



Remove

Keauhou Ranch
Brush Fire
HI-HVP-1800002096

Transportation Map
August 13, 2018



Cataclysmic
Escape Route
Kilauea Summit
To Keaua
Shipman Park
via Hwy 11

ICP
In Park Entrance
First Left
Next Right

Keauhou Access
Back of Pii Mauna Dr
Volcano Golf Course

Cataclysmic
Escape Route
Kilauea Summit
to Pahoa Black
Sands Beach
via Hwy 11

Kapāpala Access
Mauna Loa Rd to
Powerline Rd

