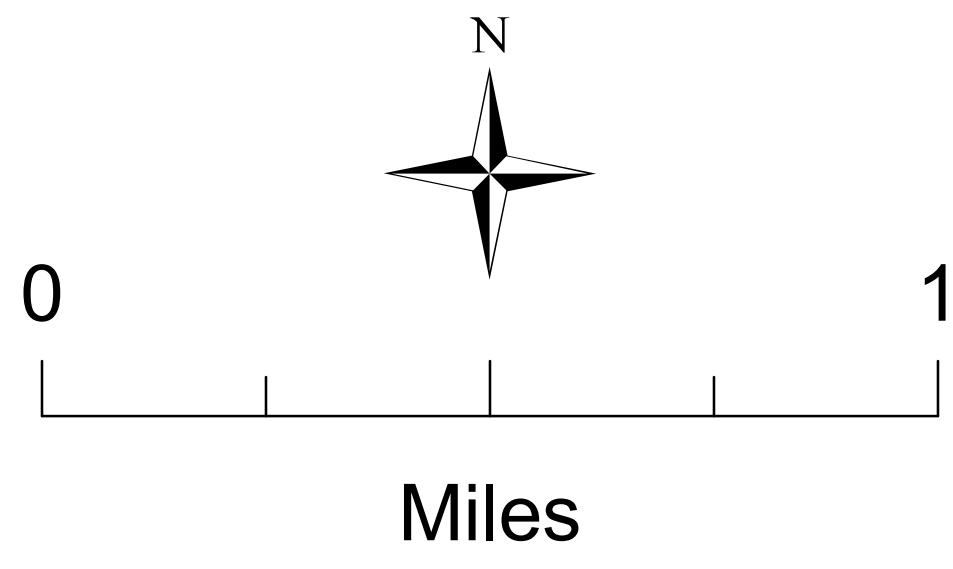


# Kīlauea Eruption Elevated Seismicity Briefing Map

Hawai'i Volcanoes  
National Park

May 16, 2018

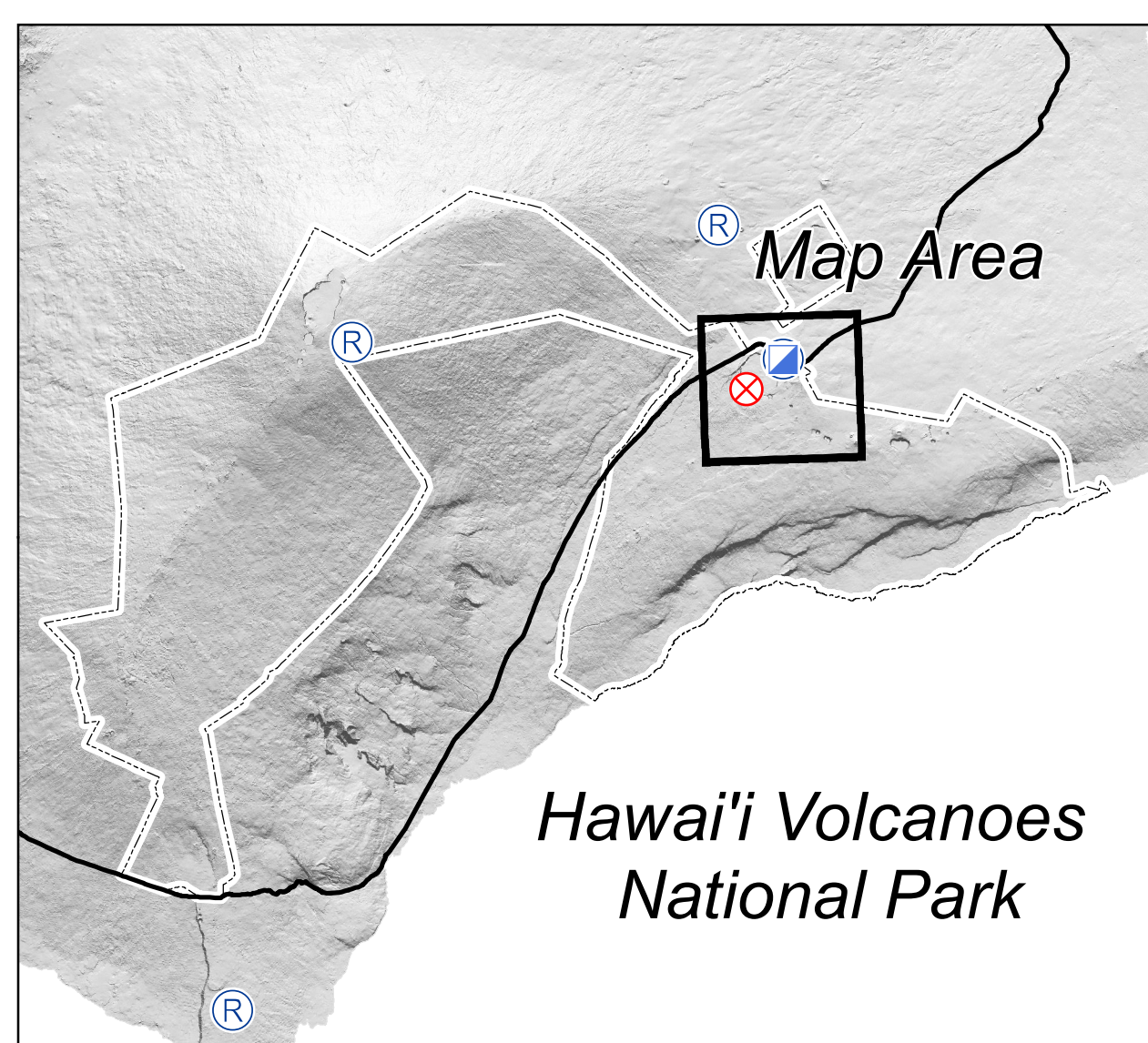


## Legend

- Emission Source
- Air Quality Monitor
- Helibase
- Incident Command Post
- Repeater
- HAVO Boundary
- Halemaumau Buffers

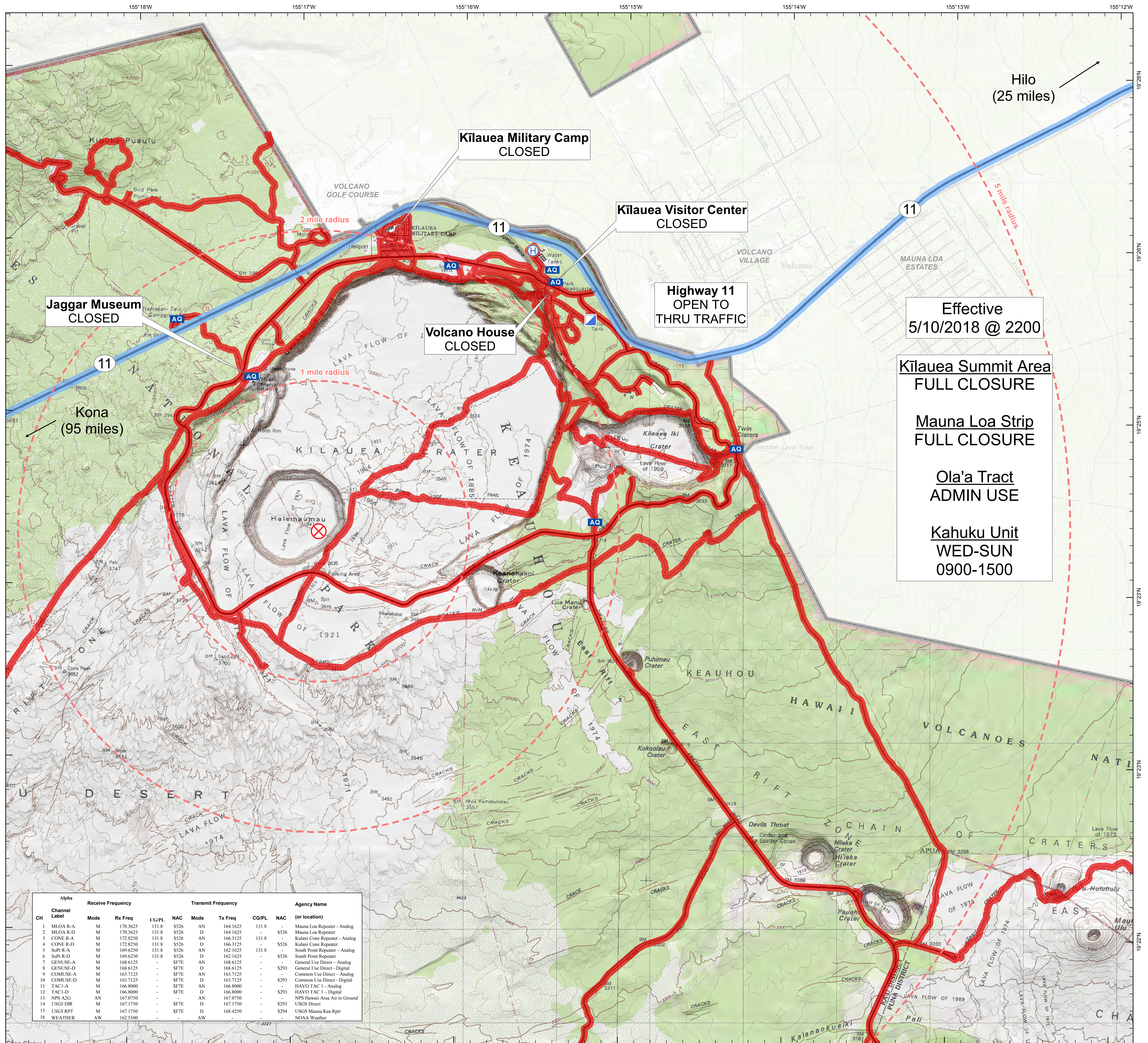
## Closure Status

- Open
- Closed



NAD83 UTM 5N  
Degrees Decimal Minutes

Mark Wasser  
NPS GISS  
May 15, 2018  
1800 hours



Effective  
5/10/2018 @ 2200

**Kīlauea Summit Area  
FULL CLOSURE**

**Mauna Loa Strip  
FULL CLOSURE**

**Ola'a Tract  
ADMIN USE**

**Kahuku Unit  
WED-SUN  
0900-1500**

CH	Alpha Channel Label	Mode	Rx Freq	CG/PL	NAC	Mode	Tx Freq	CG/PL	NAC	Agency Name (or location)
1	MLOA R-A	M	170.3625	131.8	5526	AN	164.1625	131.8	-	Mauna Loa Repeater - Analog
2	MLOA R-D	M	170.3625	131.8	5526	D	164.1625	131.8	5526	Mauna Loa Repeater
3	CONE R-A	M	172.8250	131.8	5526	AN	166.3125	131.8	5526	Kulani Cone Repeater - Analog
4	CONE R-D	M	172.8250	131.8	5526	D	166.3125	131.8	5526	Kulani Cone Repeater
5	SoP R-A	M	169.6250	131.8	5526	AN	162.1625	131.8	-	South Point Repeater - Analog
6	SoP R-D	M	169.6250	131.8	5526	D	162.1625	131.8	5526	South Point Repeater
7	GENUSE-A	M	168.6125	-	SF7E	AN	168.6125	-	-	General Use Direct - Analog
8	GENUSE-D	M	168.6125	-	SF7E	D	168.6125	-	5293	General Use Direct - Digital
9	COMUSE-A	M	163.7125	-	SF7E	AN	163.7125	-	-	Common Use Direct - Analog
10	COMUSE-D	M	163.7125	-	SF7E	D	163.7125	-	5293	Common Use Direct - Digital
11	TAC1-A	M	166.8000	-	SF7E	AN	166.8000	-	5293	HAVO TAC 1 - Analog
12	TAC1-D	M	166.8000	-	SF7E	D	166.8000	-	5293	HAVO TAC 1 - Digital
13	NPS AZG	AN	167.0750	-	SF7E	AN	167.0750	-	-	NPS Hawaii Area Air to Ground
14	USGS DIR	M	167.1750	-	SF7E	D	167.1750	-	5293	USGS Direct
15	USGS RPT	M	167.1750	-	SF7E	D	168.4250	-	5294	USGS Mauna Kea Rptr
16	WEATHER	AW	162.5500	-	-	AW	-	-	-	NOAA Weather