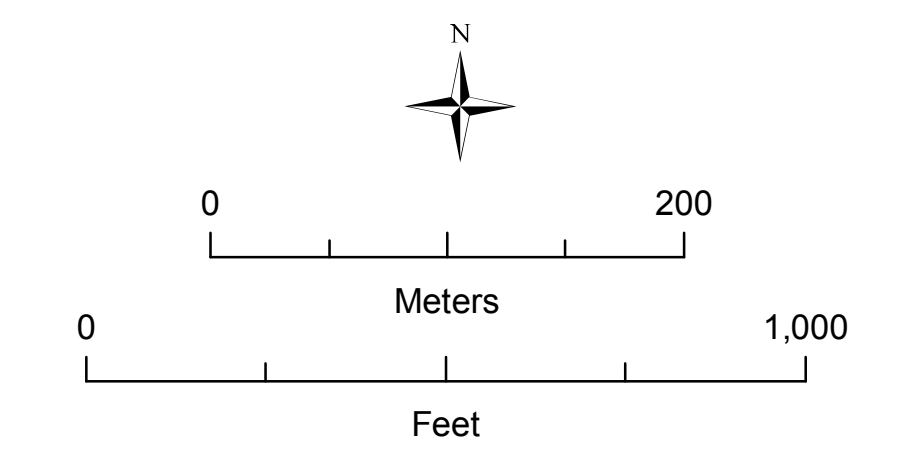


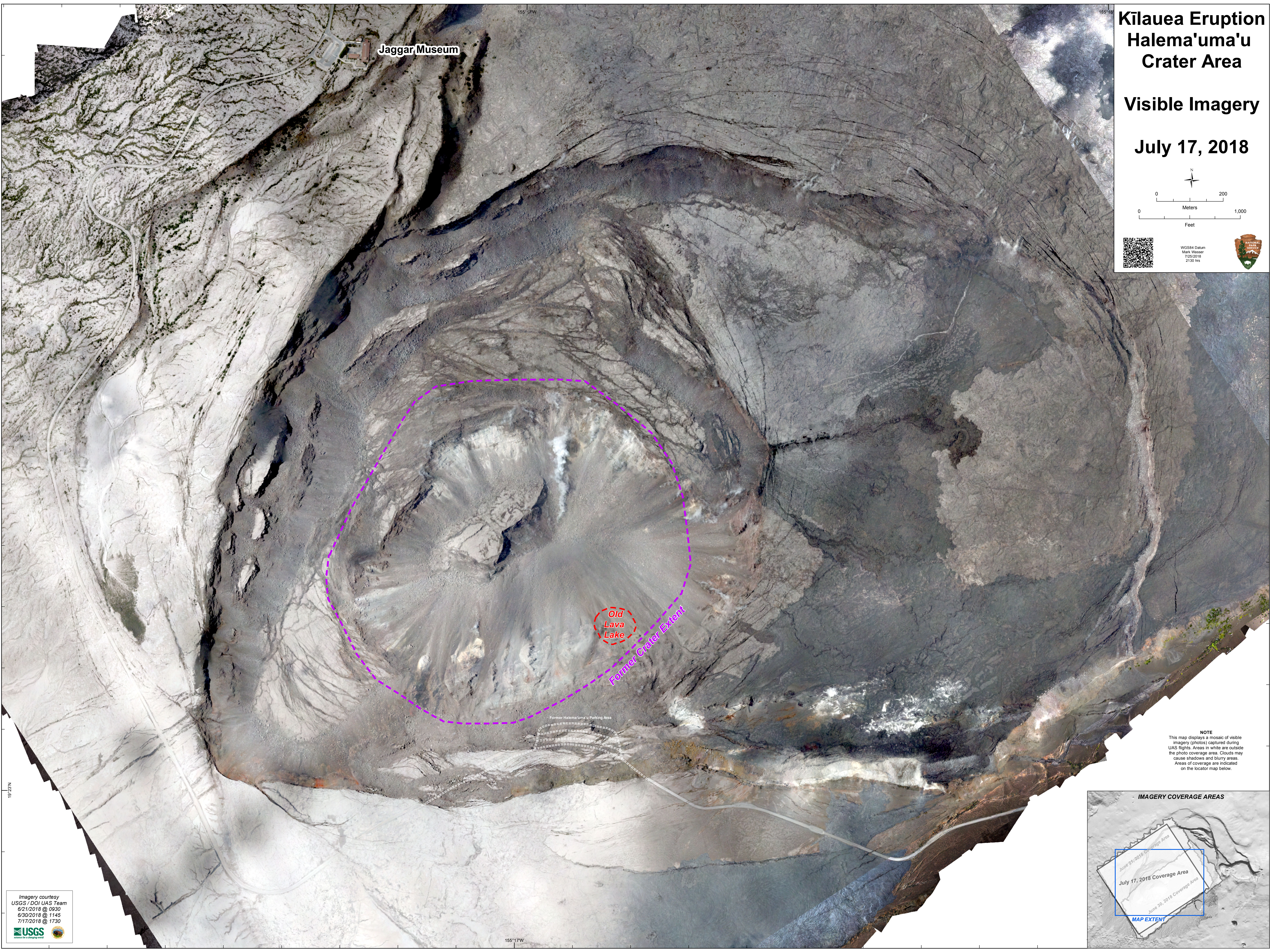
Kīlauea Eruption Halema'uma'u Crater Area

Visible Imagery

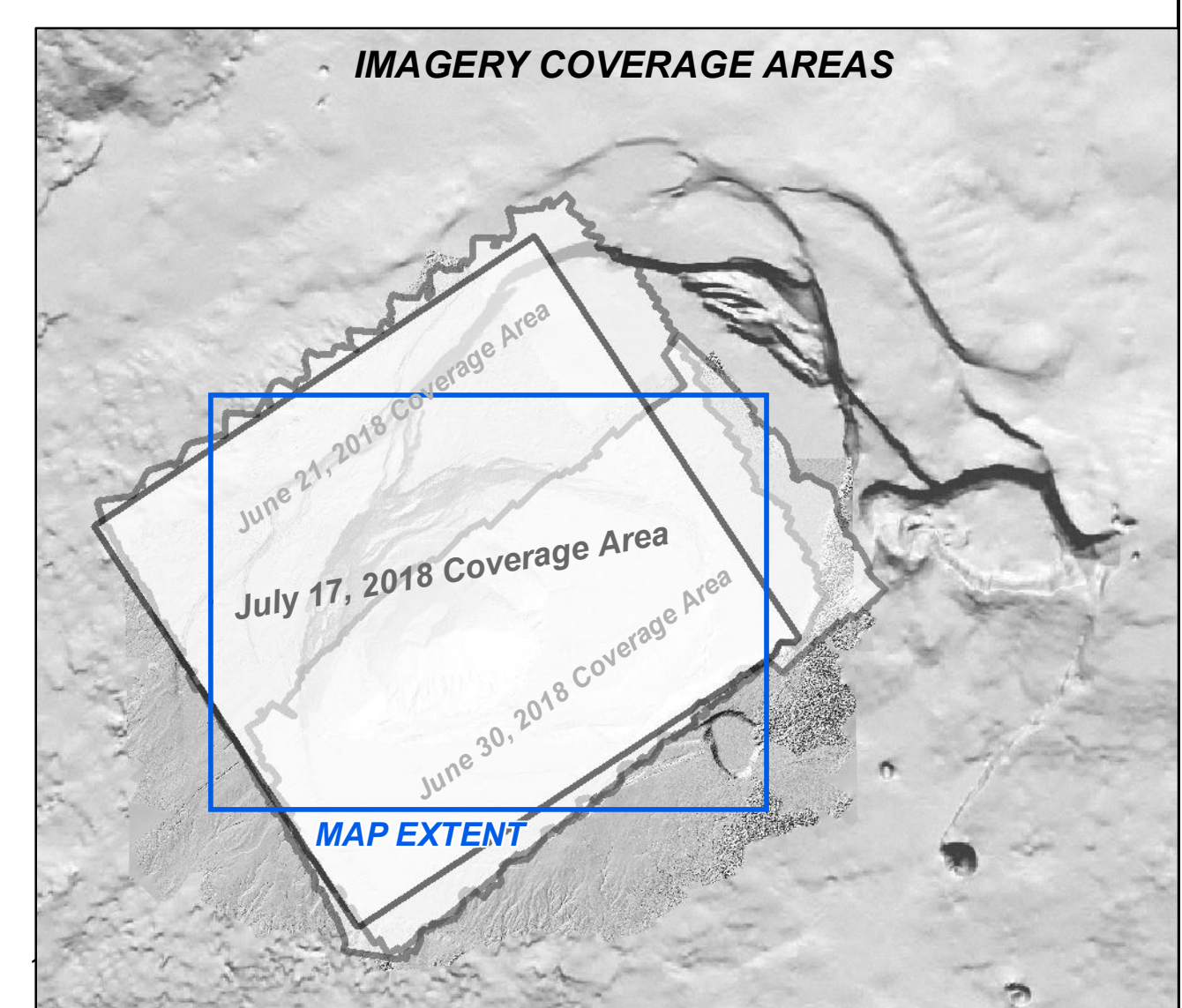
July 17, 2018



WGS84 Datum
Mark Wessner
7/25/2018
2130 hrs



NOTE
This map displays a mosaic of visible imagery (photos) captured during UAS flights. Areas in white are outside the photo coverage area. Clouds may cause shadows and blurry areas. Areas of coverage are indicated on the locator map below.



Imagery courtesy
USGS / DOI UAS Team
6/21/2018 @ 0930
6/30/2018 @ 1145
7/17/2018 @ 1730

165° 17' W

19° 23' N