

Kīlauea Eruption NPS Information Overview Map

August 2, 2018



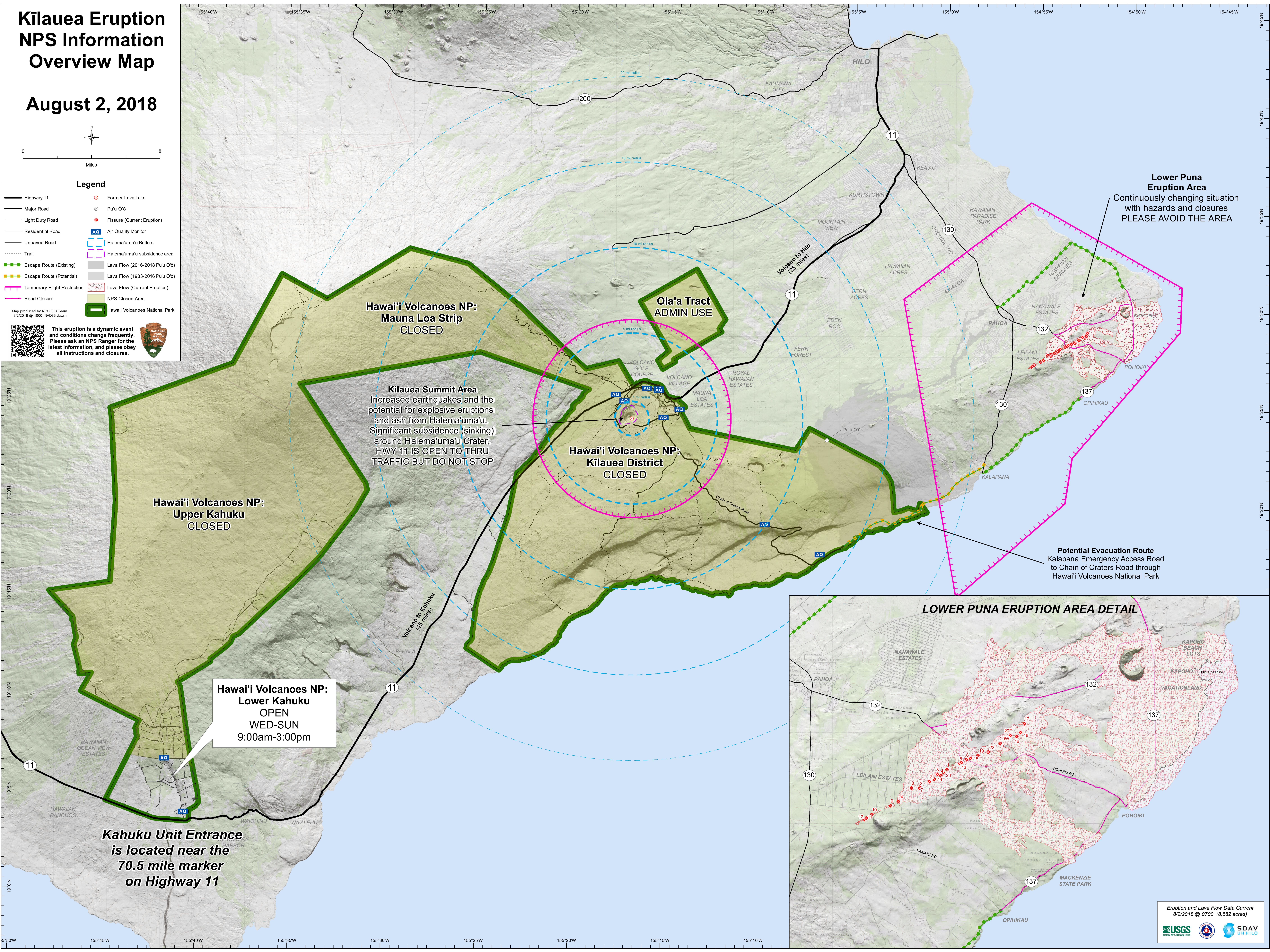
0 8
Miles

Legend

- Highway 11
- Major Road
- Light Duty Road
- Residential Road
- Unpaved Road
- Trail
- Escape Route (Existing)
- Escape Route (Potential)
- Temporary Flight Restriction
- Road Closure
- Former Lava Lake
- Pu'u Ō'o's
- Fissure (Current Eruption)
- Air Quality Monitor
- Halema'uma'u Buffers
- Halema'uma'u subsidence area
- Lava Flow (2016-2018 Pu'u Ō'o)
- Lava Flow (1983-2016 Pu'u Ō'o)
- Lava Flow (Current Eruption)
- NPS Closed Area
- Hawaii Volcanoes National Park

Map produced by NPS GIS Team
8/2/2018 @ 1000, NAD83 datum

This eruption is a dynamic event and conditions change frequently. Please ask an NPS Ranger for the latest information, and please obey all instructions and closures.



Lower Puna Eruption Area
Continuously changing situation with hazards and closures
PLEASE AVOID THE AREA

