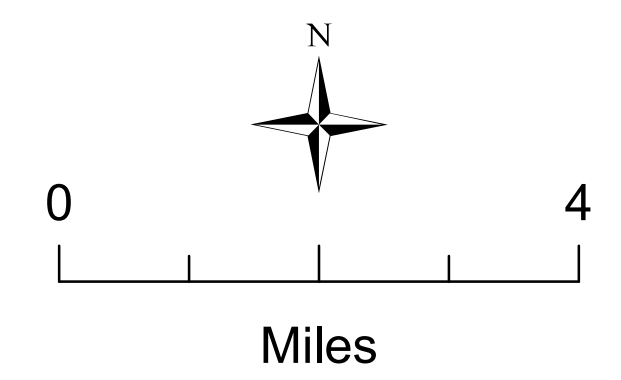


2018 HAVO Increased Volcanic Activity TFR Map

Hawai'i Volcanoes National Park

July 23, 2018

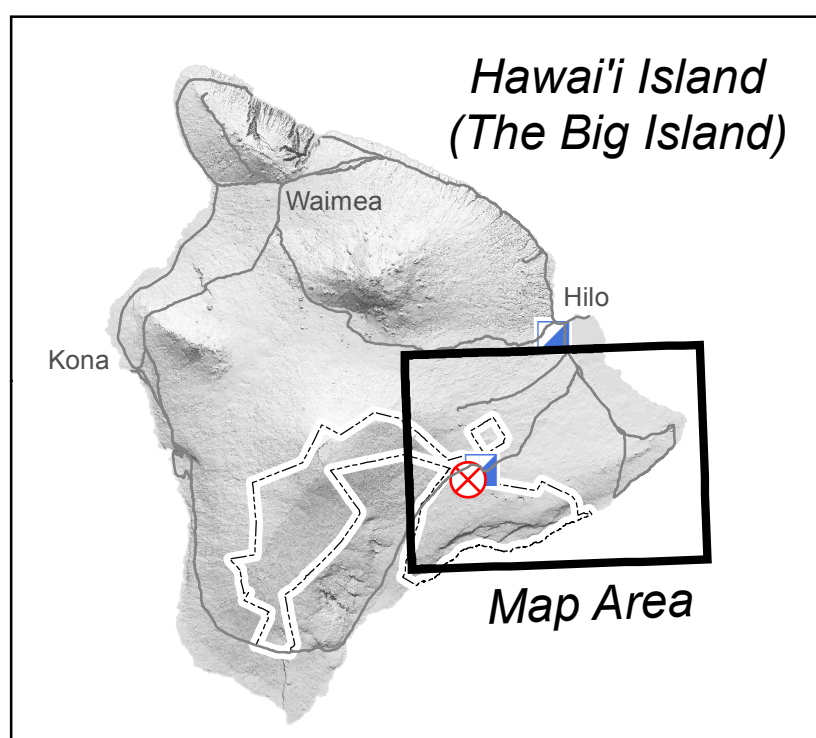


Legend

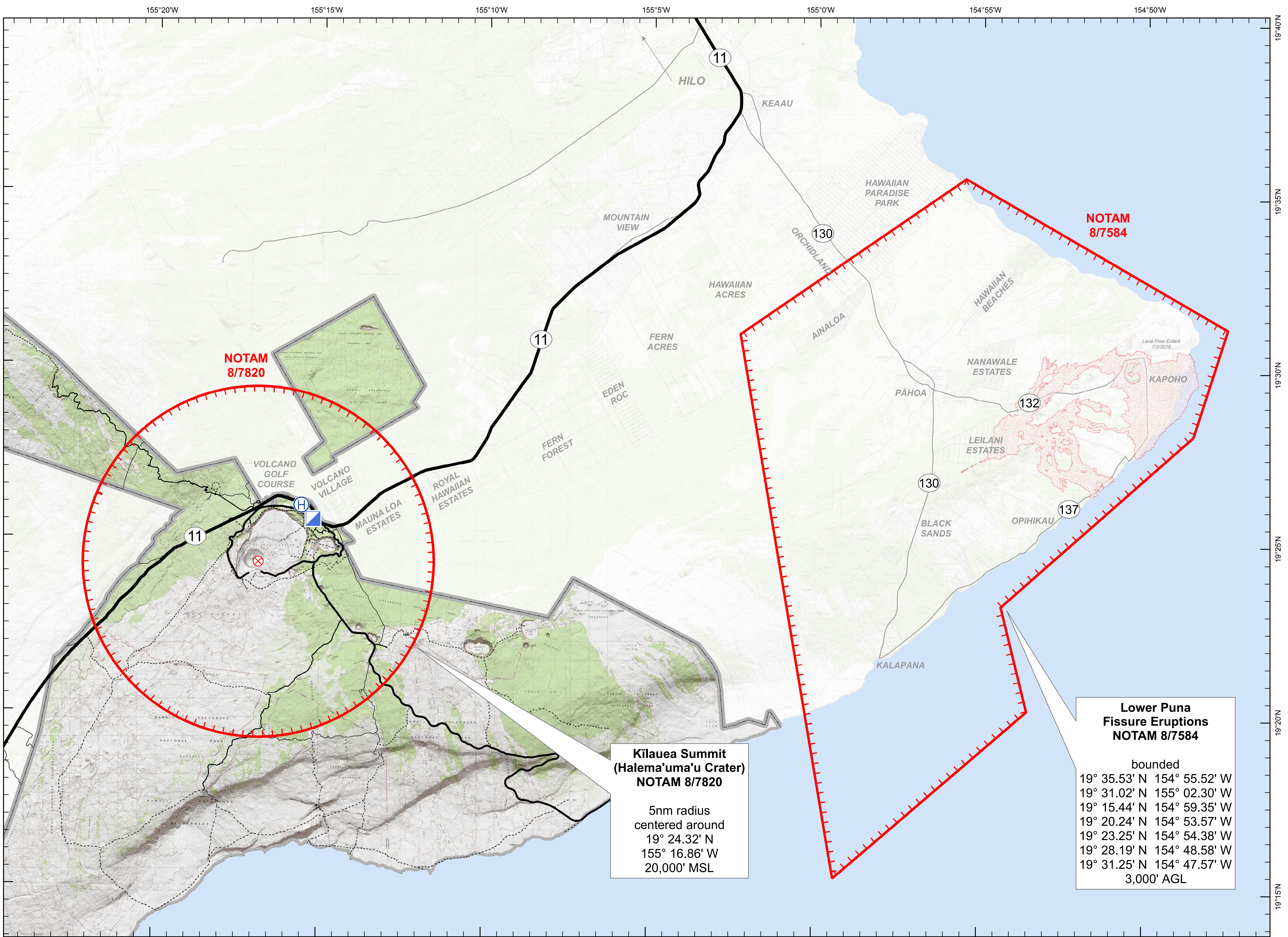
- Former Lava Lake
- Helibase
- Incident Command Post
- Lava Flow
- Temporary Flight Restriction

HAVO Roads & Trails

- Highway 11
- Secondary
- Light Duty
- Unpaved
- Trail
- HAVO Boundary



NAD83 Datum
 Mark Wasser
 David Benitez
 NPS GISS
 7/23/2018
 1430 hours



Kilauea Summit (Halema'uma'u Crater) NOTAM 8/7820

5nm radius centered around
 19° 24.32' N
 155° 16.86' W
 20,000' MSL

Lower Puna Fissure Eruptions NOTAM 8/7584

bounded
 19° 35.53' N 154° 55.52' W
 19° 31.02' N 155° 02.30' W
 19° 15.44' N 154° 59.35' W
 19° 20.24' N 154° 53.57' W
 19° 23.25' N 154° 54.38' W
 19° 28.19' N 154° 48.58' W
 19° 31.25' N 154° 47.57' W
 3,000' AGL