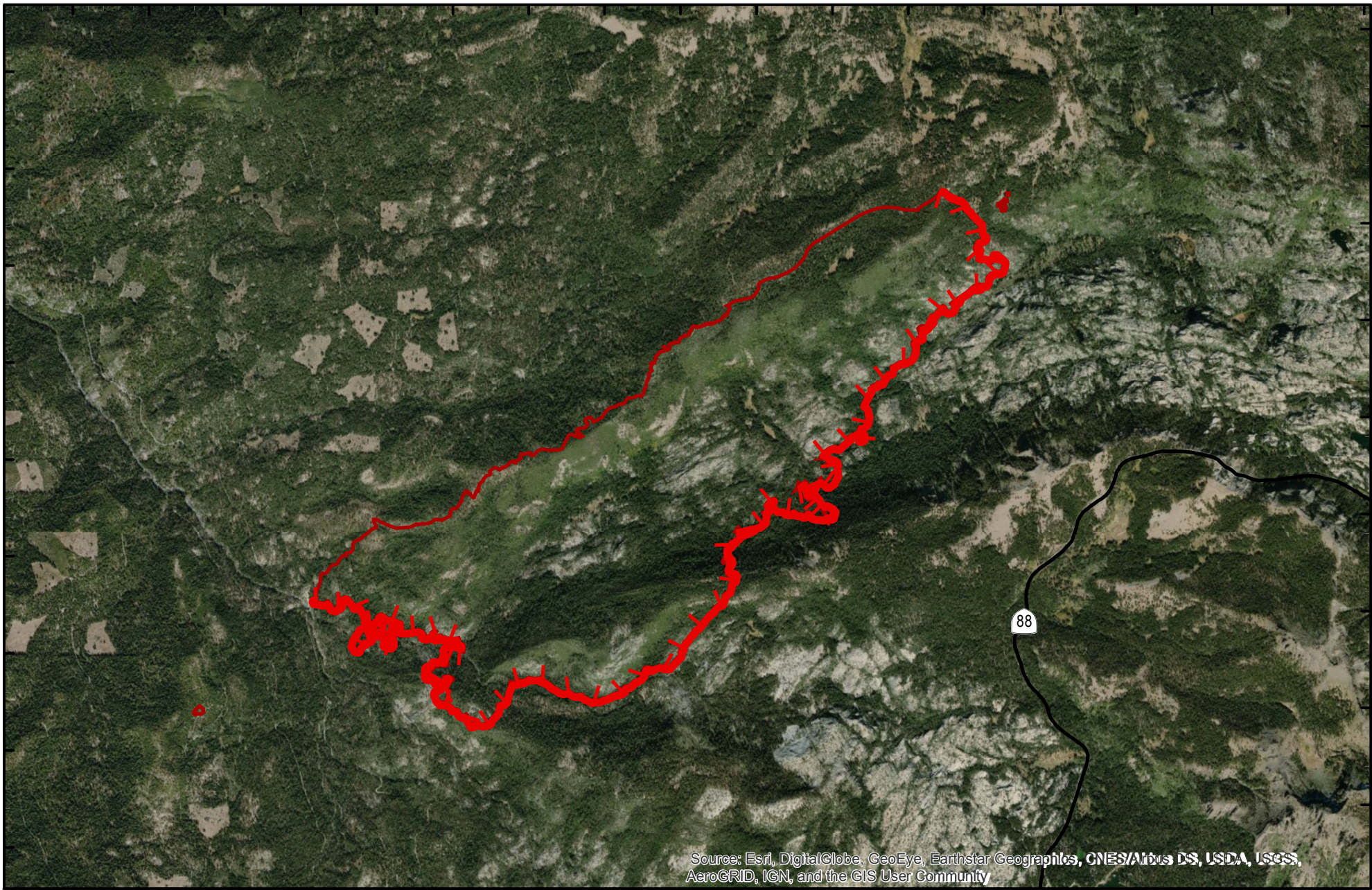


120°13.5'W 120°13'W 120°12.5'W 120°12'W 120°11.5'W 120°11'W 120°10.5'W 120°10'W 120°9.5'W 120°9'W 120°8.5'W 120°8'W 120°7.5'W 120°7'W 120°6.5'W 120°6'W 120°5.5'W 120°5'W

38°44.5'N  
38°44'N  
38°43.5'N  
38°43'N  
38°42.5'N  
38°42'N  
38°41.5'N  
38°41'N  
38°40.5'N

38°44.5'N  
38°44'N  
38°43.5'N  
38°43'N  
38°42.5'N  
38°42'N  
38°41.5'N  
38°41'N  
38°40.5'N



# Caples Fire

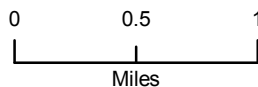
CA-ENF-030945

October 14, 2019

Acres: 2,983

## PIO Map

Wildfire Daily Fire Perimeter
 
 Uncontrolled Fire Edge



Lat Long Grid  
NAD 1983 Datum  
Degrees Decimal Minutes

Prepared by: ENF GIS  
10/14/2019