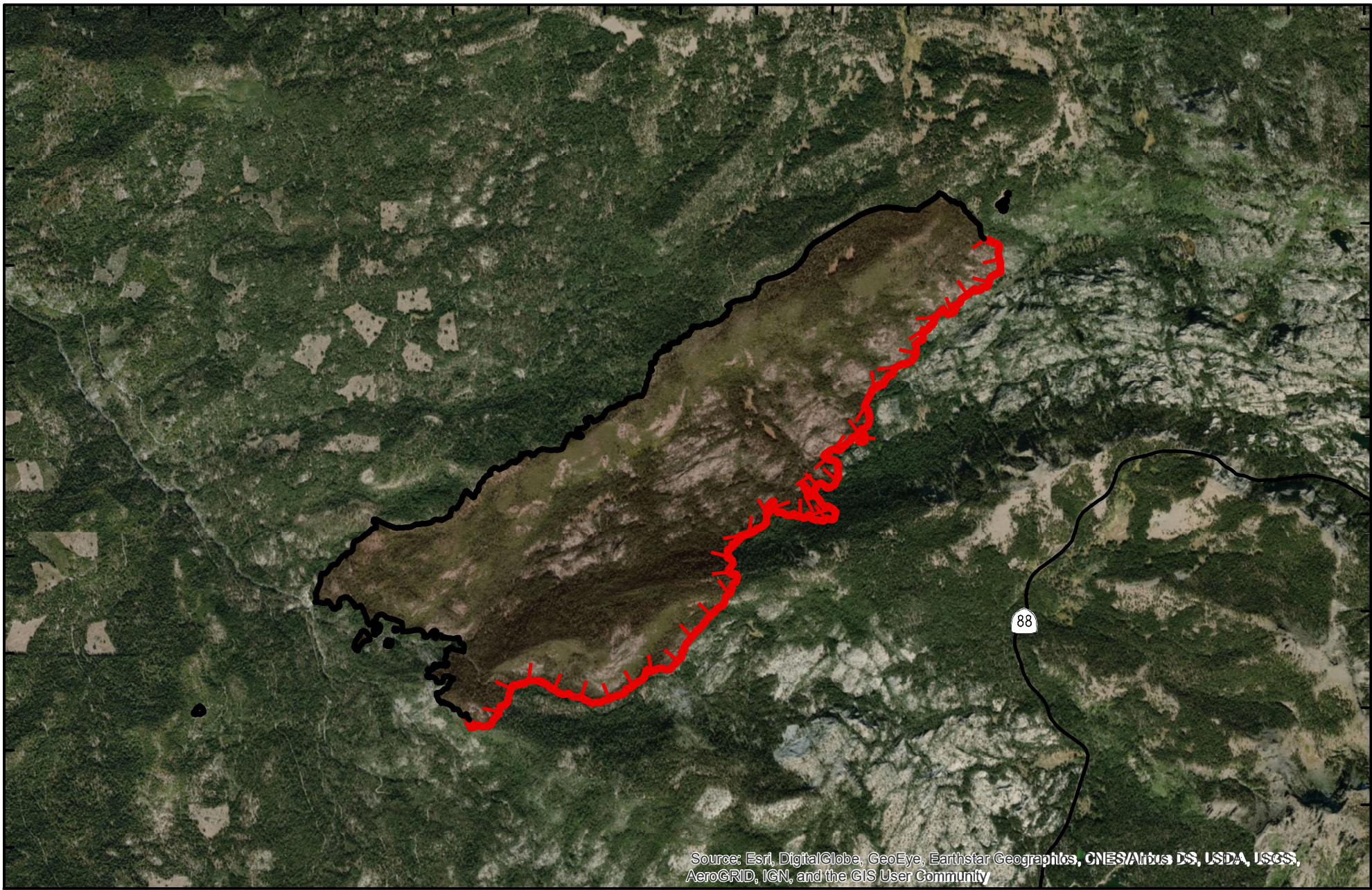


120°13.5'W 120°13'W 120°12.5'W 120°12'W 120°11.5'W 120°11'W 120°10.5'W 120°10'W 120°9.5'W 120°9'W 120°8.5'W 120°8'W 120°7.5'W 120°7'W 120°6.5'W 120°6'W 120°5.5'W 120°5'W

38°44.5'N
38°44'N
38°43.5'N
38°43'N
38°42.5'N
38°42'N
38°41.5'N
38°41'N
38°40.5'N

38°44.5'N
38°44'N
38°43.5'N
38°43'N
38°42.5'N
38°42'N
38°41.5'N
38°41'N
38°40.5'N



Caples Fire

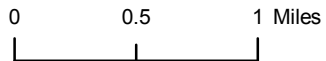
CA-ENF-030945

October 15, 2019

Acres: 3,133

PIO Map

- Wildfire Daily Fire Perimeter
- Uncontrolled Fire Edge
- Completed Line



Lat Long Grid
NAD 1983 Datum
Degrees Decimal Minutes

Prepared by: ENF GIS
10/14/2019