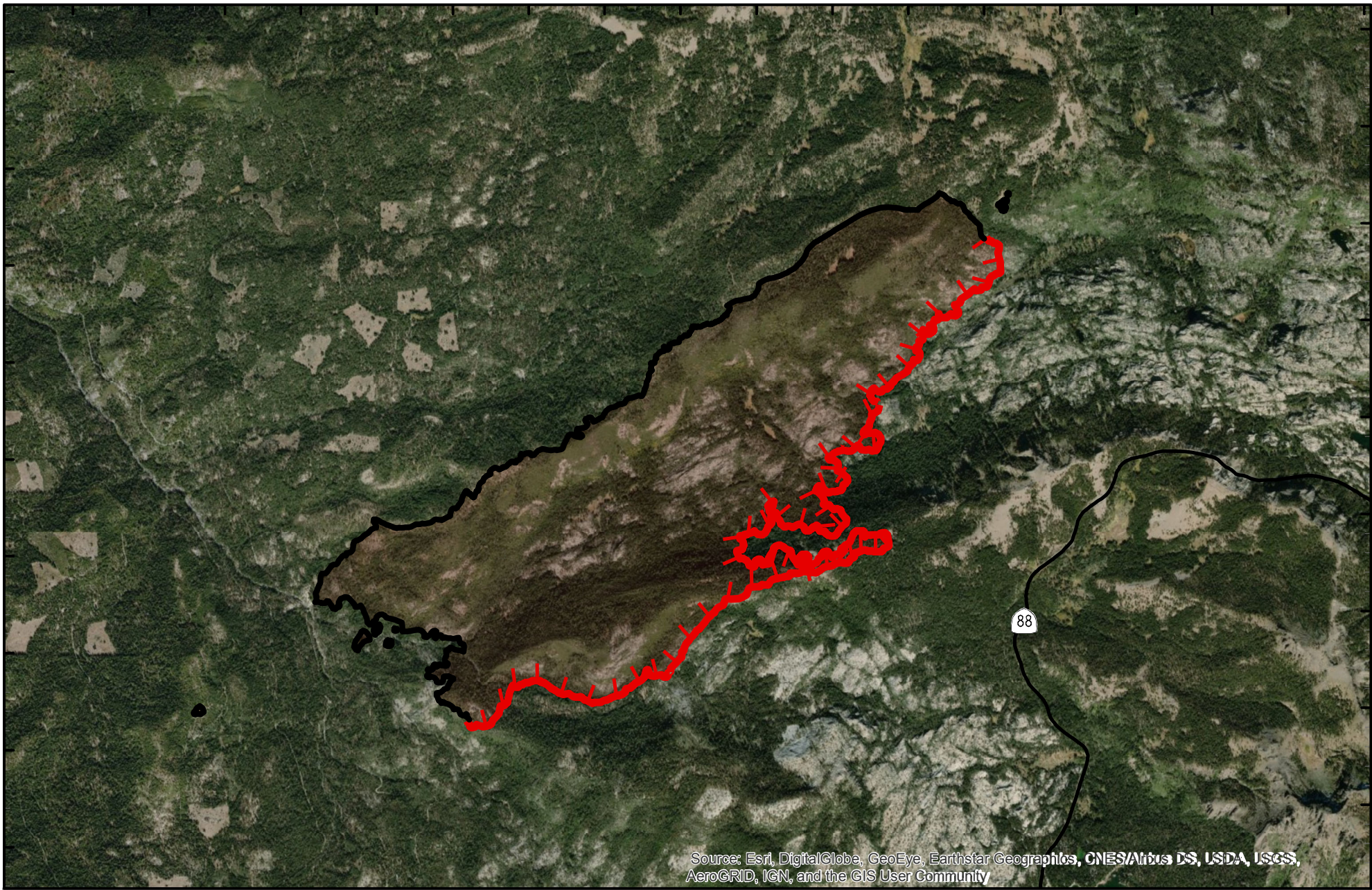


120°13.5'W 120°13'W 120°12.5'W 120°12'W 120°11.5'W 120°11'W 120°10.5'W 120°10'W 120°9.5'W 120°9'W 120°8.5'W 120°8'W 120°7.5'W 120°7'W 120°6.5'W 120°6'W 120°5.5'W 120°5'W

38°44.5'N  
38°44'N  
38°43.5'N  
38°43'N  
38°42.5'N  
38°42'N  
38°41.5'N  
38°41'N  
38°40.5'N

38°44.5'N  
38°44'N  
38°43.5'N  
38°43'N  
38°42.5'N  
38°42'N  
38°41.5'N  
38°41'N  
38°40.5'N



Source: Esri, DigitalGlobe, GeoEye, Earthstar Geographics, CNES/Airbus DS, USDA, USGS, AeroGRID, IGN, and the GIS User Community




# Caples Fire

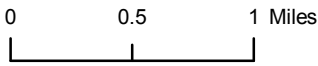
CA-ENF-030945

October 16, 2019

Acres: 3,100

## PIO Map

-  Wildfire Daily Fire Perimeter
-  Uncontrolled Fire Edge
-  Completed Line



  
 Lat Long Grid  
 NAD 1983 Datum  
 Degrees Decimal Minutes

Prepared by: ENF GIS  
10/16/2019