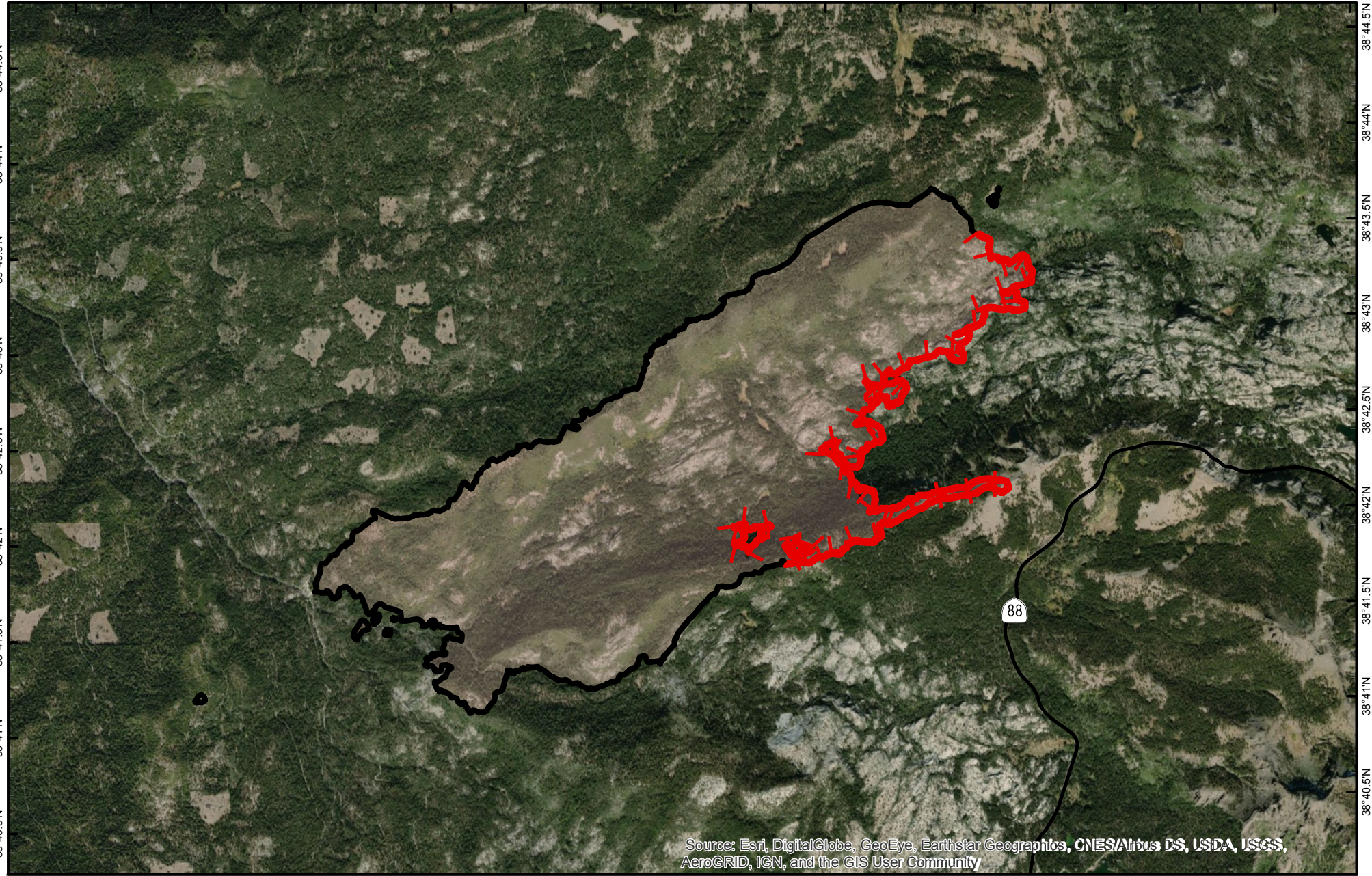


120°13.5'W 120°13'W 120°12.5'W 120°12'W 120°11.5'W 120°11'W 120°10.5'W 120°10'W 120°9.5'W 120°9'W 120°8.5'W 120°8'W 120°7.5'W 120°7'W 120°6.5'W 120°6'W 120°5.5'W 120°5'W

38°44.5'N
38°44'N
38°43.5'N
38°43'N
38°42.5'N
38°42'N
38°41.5'N
38°41'N
38°40.5'N

38°44.5'N
38°44'N
38°43.5'N
38°43'N
38°42.5'N
38°42'N
38°41.5'N
38°41'N
38°40.5'N



Source: Esri, DigitalGlobe, GeoEye, Earthstar Geographics, CNES/Airbus DS, USDA, USGS, AeroGRID, IGN, and the GIS User Community




Caples Fire

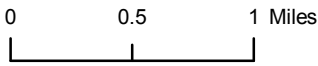
CA-ENF-030945

October 19, 2019

Acres: 3,382

PIO Map

-  Wildfire Daily Fire Perimeter
-  Uncontrolled Fire Edge
-  Completed Line




 Lat Long Grid
 NAD 1983 Datum
 Degrees Decimal Minutes

Prepared by: ENF GIS
10/18/2019