

120°12'W

120°10'W

120°8'W

120°6'W

38°44'N

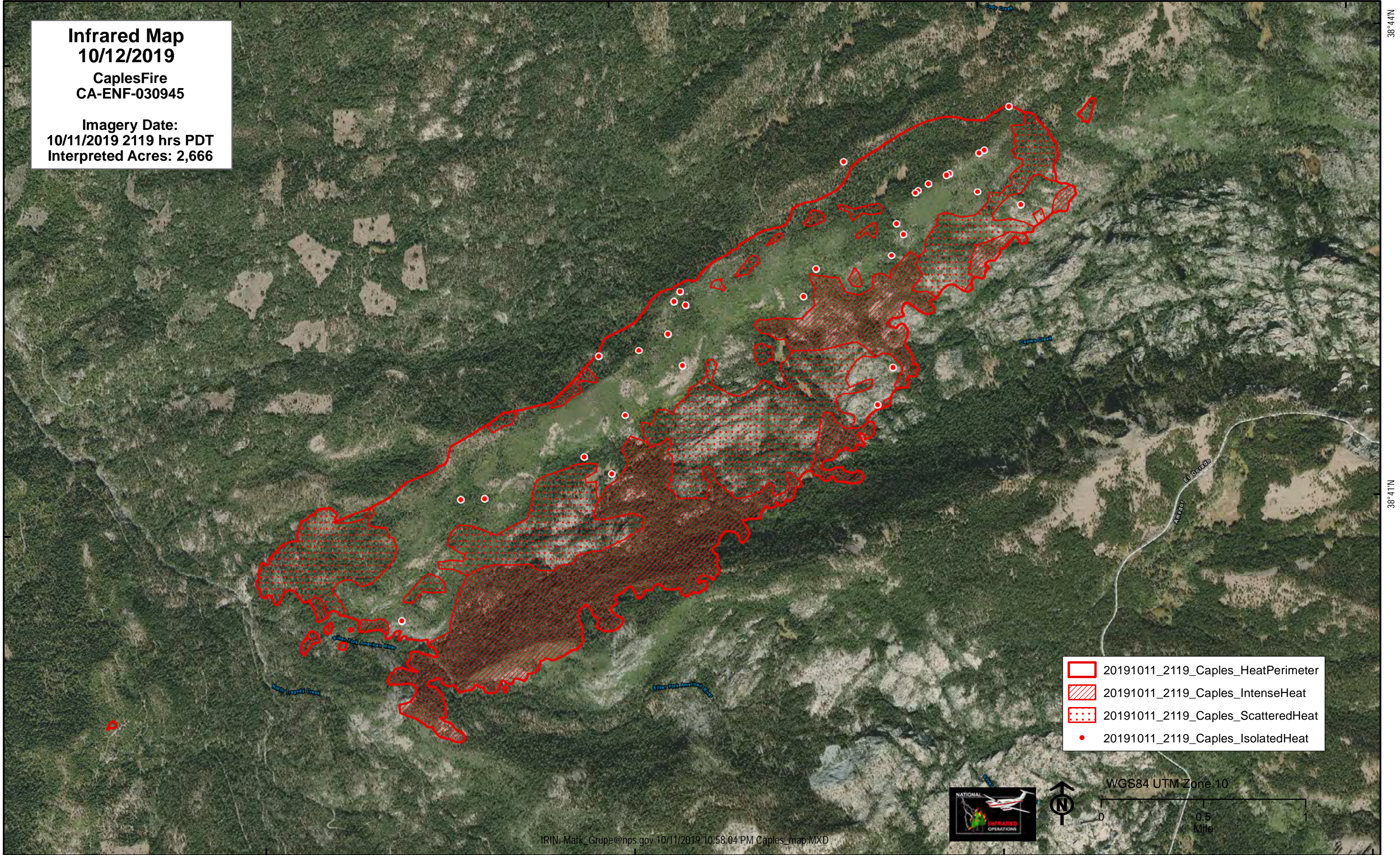
38°44'N





38°41'N

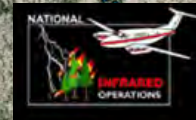
38°41'N

Infrared Map
10/12/2019
CaplesFire
CA-ENF-030945

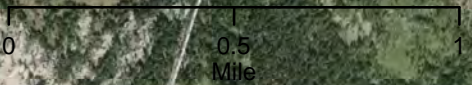
Imagery Date:
 10/11/2019 2119 hrs PDT
 Interpreted Acres: 2,666



-  20191011_2119_Caples_HeatPerimeter
-  20191011_2119_Caples_IntenseHeat
-  20191011_2119_Caples_ScatteredHeat
-  20191011_2119_Caples_IsolatedHeat



WGS84 UTM Zone 10



120°12'W

120°10'W

120°8'W

120°6'W