

120°12'W

120°11'W

120°10'W

120°9'W

120°8'W

120°7'W

38°44'N

38°43'N

38°41'N

38°41'N

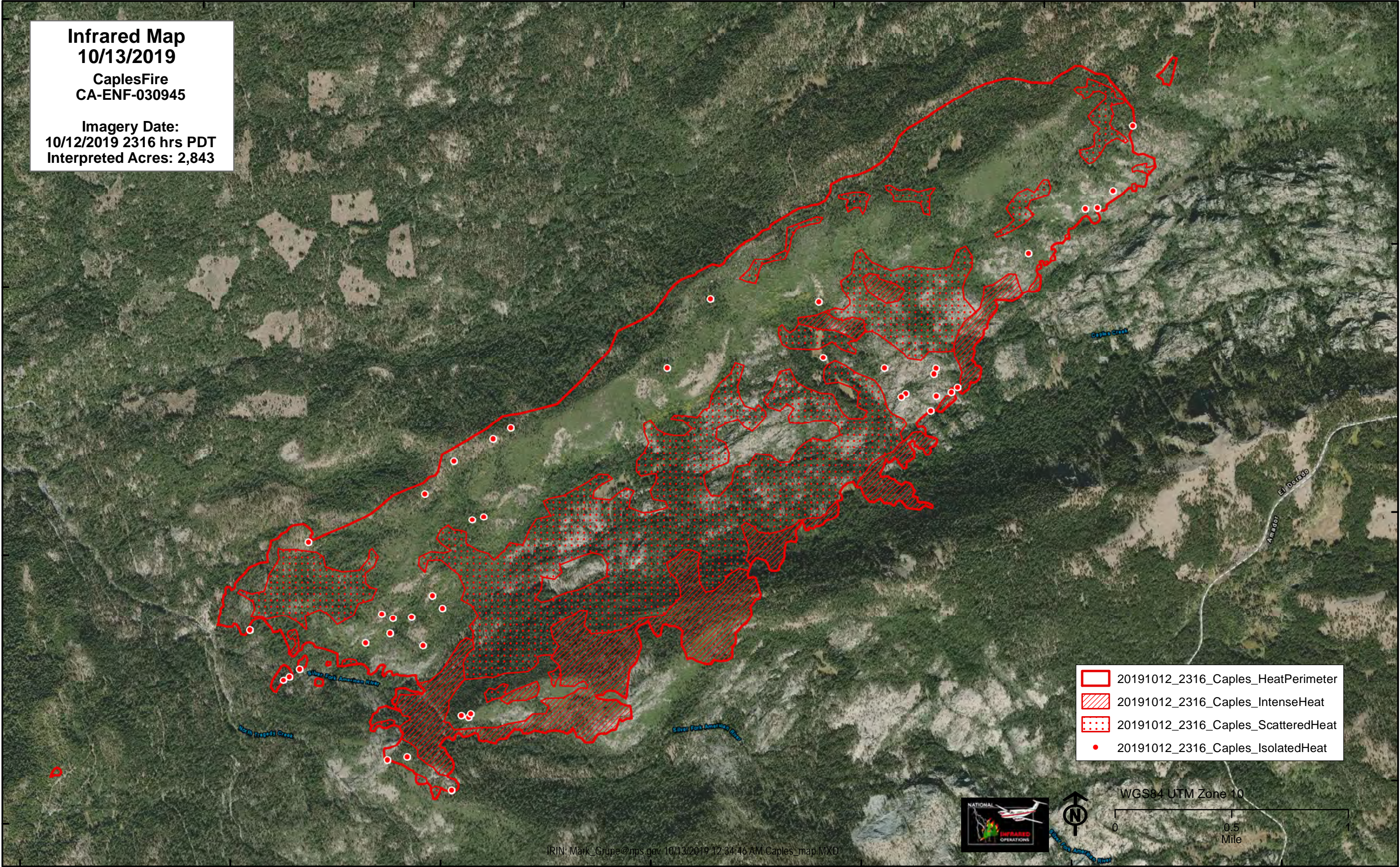
38°43'N

38°41'N

38°41'N

Infrared Map
10/13/2019
CaplesFire
CA-ENF-030945

Imagery Date:
 10/12/2019 2316 hrs PDT
 Interpreted Acres: 2,843



-  20191012_2316_Caples_HeatPerimeter
-  20191012_2316_Caples_IntenseHeat
-  20191012_2316_Caples_ScatteredHeat
-  20191012_2316_Caples_IsolatedHeat

WGS84 UTM Zone 10

0 0.5 Mile

120°13'W

120°12'W

120°11'W

120°10'W

120°9'W

120°8'W

120°7'W