

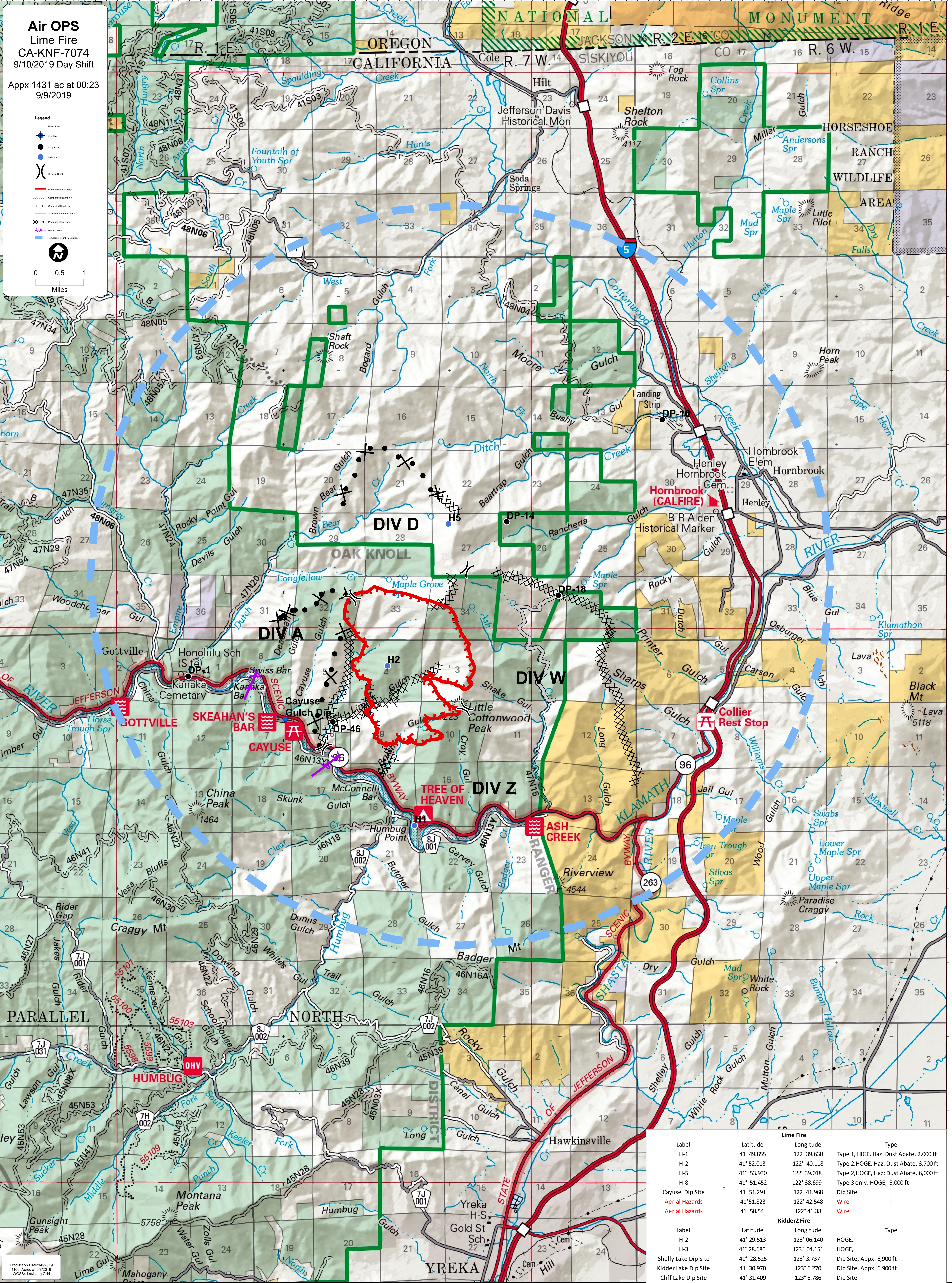
Air OPS
Lime Fire
CA-KNF-7074
9/10/2019 Day Shift

Appx 1431 ac at 00:23
9/9/2019

Legend

- Event Point
- Dip Site
- Drop Point
- Headset
- Obstacle
- Uncontaminated Fire Edge
- Completed Fire Line
- Proposed Fire Line
- Access or Improved Road
- Proposed Ditch Line
- Aerial Hazard
- Temporary Flight Restriction

0 0.5 1 Miles



Lime Fire			
Label	Latitude	Longitude	Type
H-1	41° 49.855	122° 39.630	Type 1, HIGE, Haz: Dust Abate, 2,000 ft
H-2	41° 52.013	122° 40.118	Type 2, HOG, Haz: Dust Abate, 3,700 ft
H-5	41° 53.930	122° 39.018	Type 2, HOG, Haz: Dust Abate, 6,000 ft
H-8	41° 51.452	122° 38.699	Type 3 only, HOG, 5,000 ft
Cayuse Dip Site	41° 51.291	122° 41.968	Dip Site
Aerial Hazards	41° 51.823	122° 42.548	Wire
Aerial Hazards	41° 50.54	122° 41.38	Wire

Kilder2 Fire			
Label	Latitude	Longitude	Type
H-2	41° 29.513	123° 06.140	HOG, HOG,
H-3	41° 28.680	123° 04.151	HOG,
Shelly Lake Dip Site	41° 28.525	123° 3.737	Dip Site, Appx. 6,900 ft
Kilder Lake Dip Site	41° 30.970	123° 6.270	Dip Site, Appx. 6,900 ft
Cliff Lake Dip Site	41° 31.409	123° 6.786	Dip Site