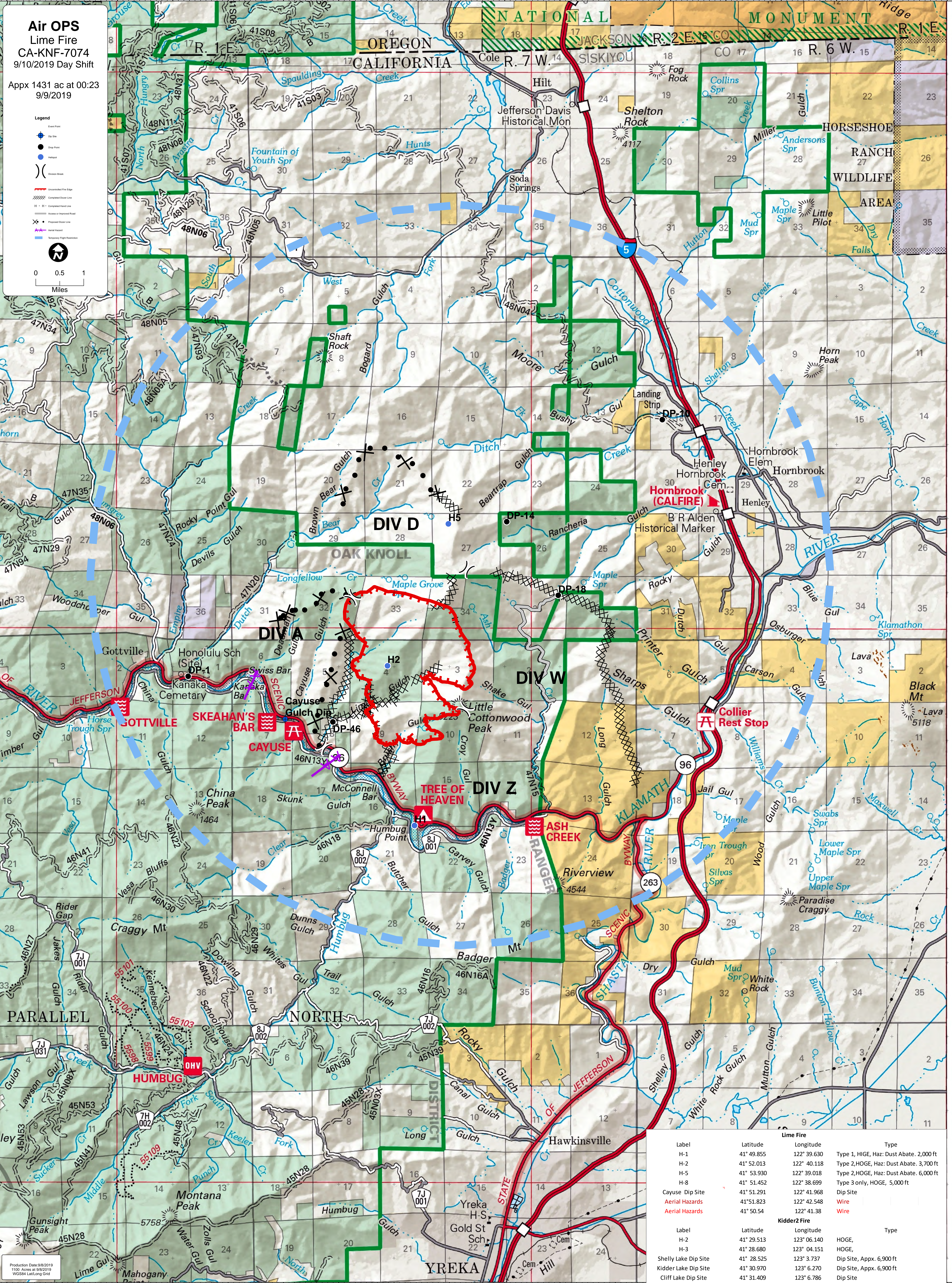
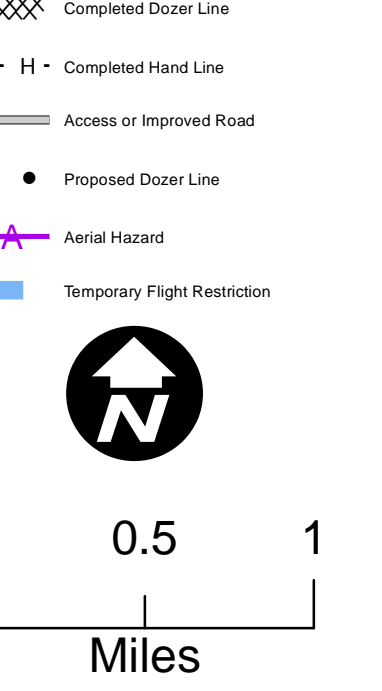


**Air OPS**  
Lime Fire  
CA-KNF-7074  
9/10/2019 Day Shift

Appx 1431 ac at 00:23  
9/9/2019

- Legend**
- Dip Site
  - Dip Point
  - Hazard
  - ( ) Obstacle
  - Unimproved Fire Edge
  - Completed Fire Line
  - Access or Improved Road
  - Proposed Ditch Line
  - Aerial Hazard
  - Temporary Flight Restriction



Lime Fire			
Label	Latitude	Longitude	Type
H-1	41° 49.855	122° 39.630	Type 1, HIGE, Haz: Dust Abate, 2,000 ft
H-2	41° 52.013	122° 40.118	Type 2, HOG, Haz: Dust Abate, 3,700 ft
H-5	41° 53.930	122° 39.018	Type 2, HOG, Haz: Dust Abate, 6,000 ft
H-8	41° 51.452	122° 38.699	Type 3 only, HOG, 5,000 ft
Cayuse Dip Site	41° 51.291	122° 41.968	Dip Site
Aerial Hazards	41° 51.823	122° 42.548	Wire
Aerial Hazards	41° 50.54	122° 41.38	Wire

Kilder2 Fire			
Label	Latitude	Longitude	Type
H-2	41° 29.513	123° 06.140	HOG, HOG,
H-3	41° 28.680	123° 04.151	HOG,
Shelly Lake Dip Site	41° 28.525	123° 3.737	Dip Site, Appx. 6,900 ft
Kilder Lake Dip Site	41° 30.970	123° 6.270	Dip Site, Appx. 6,900 ft
Cliff Lake Dip Site	41° 31.409	123° 6.786	Dip Site