

**AIR OPERATIONS SUMMARY**

Prepared By: John Crotty/ Steve Beall

Prepared Date: 9/14/19 Prepared Time: 1930

1. INCIDENT NAME: Lime / Kidder 2

2. OPERATIONAL PERIOD DATE: 9/14/19

START TIME: 0600

END TIME: 1951

SUNRISE: 0649

SUNSET: 1921

**3. REMARKS (Safety Notes, Hazards, Air Operations Special Equipment, etc.):**

Visibility - Smoke. (Check with ATGS)  
 See map for Avoidance Area  
 See map for no dip areas  
 Flight Hazards- Wilderness, Powerlines, winds, MTR's (Check Flight Haz Map, MTR's)  
 Fly all missions with landing lights on.  
 USE 1255  
 Keep foam and retardant out of waterways. Do not contaminate dip sites. Clean buckets for Wilderness  
 Use see and avoid tactics with external loads over roads and highways.  
 Siskiyou Airport Antelope East of runway. Gliders and RC aircraft  
 Scott: Towers 200' 2 miles South and Geese in adjacent lands  
 Klamath River Dip: Low comm and power lines

On order:

6. PERSONNEL	NAME	Phone #	7. FREQUENCY	AM	FM
AOBD	John Crotty	805-440-6186	Command Rptr Lime NIFC C1		170.9750 RX 168.7000 TX Tone 8 103.5 Both Sides
ASGS ASGS (T)	Steve Beall Ray Wilson	530-598-6755 707-472-8088	Command Rptr Kidder 2 NIFC C9		170.0125 RX 165.2500 TX Tone 8 103.5 Both Sides
ATGS ASM	Jason Withrow	530-206-6955	RW A/A Lime FW A/A Lime A/G CMD Lime/Kid 2 A/G Tac Lime RW A/A Kid FW A/A Kid A/G Tac Kid	118.075  119.125	168.3375 166.6000 165.0000  172.5500 162.1875
HEB1: Siskiyou HEB1(t):Siskiyou HEB1: Scott HEB1(t): Scott	Mike Smith Joshua Hanks Sam Martin Elliot Scott	530-598-4130 406-281-4783 530-366-4341 530-905-0024	DECK		SIY: 168.3500 SV: 166.6725
Medevac and Hoist Air to Ground			Cal Coord		156.0750 Tone 6 156.7 TX/RX
Ground to Air Emergency Only			Air Guard		168.6250 Tone 1 on TX
KNF Dispatch		530-841-4604			

Special Equipment: Helibase support trailer,

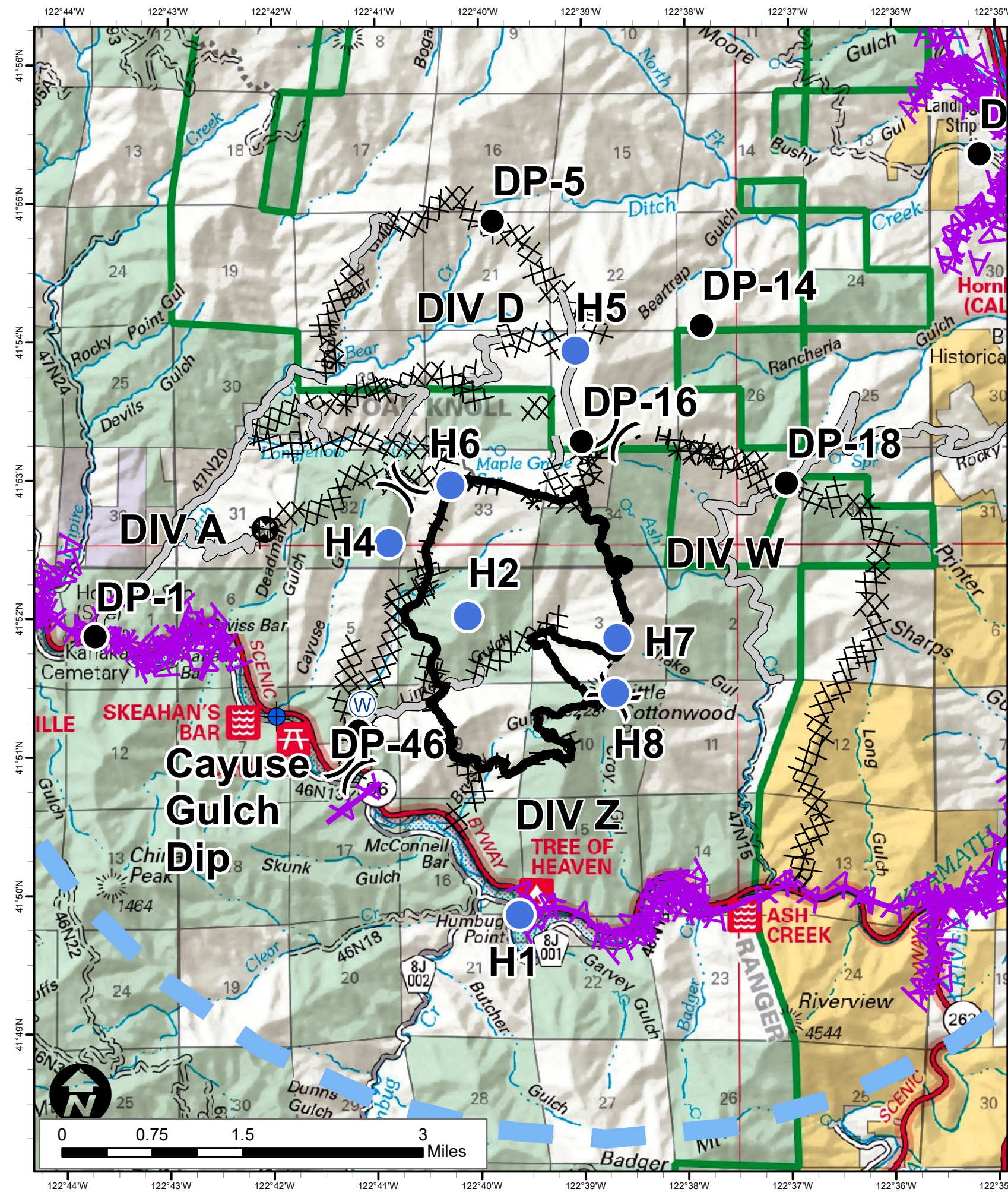
**4. MEDIVAC AIRCRAFT**

Incident medevac: Incident ships as available  
 Hoist ship: KRN H-407  
 Day/Night ALS, Extrication tools.  
 Staged Redding ETA 1hr  
 Air Ambulances:  
 Mercy 105 MFR  
 PHI 43, Reach 5 RDD  
 Airlink 3 LMT

**5. TFR: In Place**

Lime #9/5120  
 Center point 41 53'14"N  
 122 38'48"W  
 5 Mile Radius@10000  
 Kid #9/5094  
 Center point 41 30'18"N  
 123 04'41"W  
 5 Mile Radius@10000

8. FIXED-WING Avail/Type/Make-Model/ FAA N#/ Base(s)
AA-05 Siskiyou
Air Tankers : On request
Lead Planes: On Request
Helibase location: Scott: 41 33.47 X 122 51.30 Siskiyou: 41 46.70 X 123 28.30



**Lime Fire**

Label	Latitude	Longitude	Type
H-1	41° 49.855	122° 39.630	Type 1, HIGE, Haz: Dust Abate. 2,000 ft
H-2	41° 52.013	122° 40.118	Type 2, HOGE, Haz: Dust Abate. 3,700 ft
H-4	41° 52.542	122° 40.877	HOGE, 3,500 ft
H-5	41° 53.930	122° 39.018	Type 2, HOGE, Haz: Dust Abate. 6,000 ft
H-6	41° 52.96	122° 40.28	HOGE, Dust Abate. 4400 ft
H-7	41° 51.850	122° 38.672	HOGE, Haz: Dust Abate. 5,000 ft
H-8	41° 51.452	122° 38.699	Type 3 only, HOGE, 5,000 ft
Cayuse Dip Site	41° 51.291	122° 41.968	Dip Site
Aerial Hazards	41° 51.823	122° 42.548	Wire
Aerial Hazards	41° 50.54	122° 41.38	Wire

**Kidder2 Fire**

Label	Latitude	Longitude	Type
H-2	41° 29.513	123° 06.140	HOGE,
H-3	41° 28.680	123° 04.151	HOGE,
Shelly Lake Dip Site	41° 28.525	123° 3.737	Dip Site, Appx. 6,900 ft
Kidder Lake Dip Site	41° 30.970	123° 6.270	Dip Site, Appx. 6,900 ft
Campbell Lake	41° 31.58	123° 06.21	Dip Site
Kidder Creek	41° 30.975	122° 59.446	Dip Site, Appx. 3,200 ft
Cliff Lake Dip Site	41° 31.409	123° 6.786	Dip Site