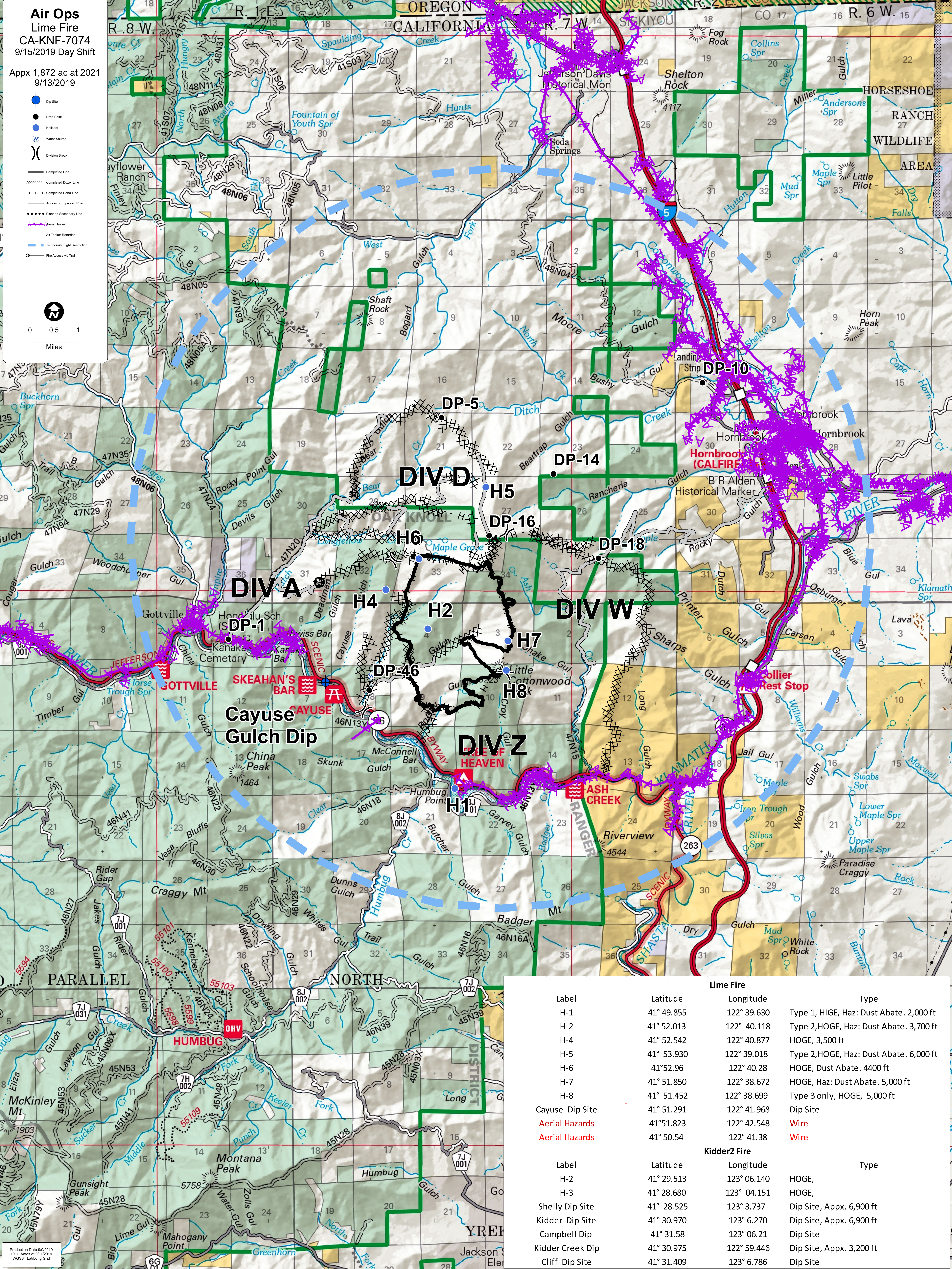


Air Ops
 Lime Fire
 CA-KNF-7074
 9/15/2019 Day Shift

Appx 1,872 ac at 2021
 9/13/2019

- Dip Site
- Drop Point
- Helipad
- Water Source
- Division Break
- Completed Line
- Completed Dozer Line
- Completed Hand Line
- Access or Improved Road
- Planned Secondary Line
- Aerial Hazard
- Air Tanker Retardant
- Temporary Flight Restriction
- Fire Access via Trail

0 0.5 1
 Miles



| Lime Fire | | | |
|------------------|------------|-------------|---|
| Label | Latitude | Longitude | Type |
| H-1 | 41° 49.855 | 122° 39.630 | Type 1, HIGE, Haz: Dust Abate. 2,000 ft |
| H-2 | 41° 52.013 | 122° 40.118 | Type 2, HIGE, Haz: Dust Abate. 3,700 ft |
| H-4 | 41° 52.542 | 122° 40.877 | HIGE, 3,500 ft |
| H-5 | 41° 53.930 | 122° 39.018 | Type 2, HIGE, Haz: Dust Abate. 6,000 ft |
| H-6 | 41° 52.96 | 122° 40.28 | HIGE, Dust Abate. 4400 ft |
| H-7 | 41° 51.850 | 122° 38.672 | HIGE, Haz: Dust Abate. 5,000 ft |
| H-8 | 41° 51.452 | 122° 38.699 | Type 3 only, HIGE, 5,000 ft |
| Cayuse Dip Site | 41° 51.291 | 122° 41.968 | Dip Site |
| Aerial Hazards | 41° 51.823 | 122° 42.548 | Wire |
| Aerial Hazards | 41° 50.54 | 122° 41.38 | Wire |
| Kidder2 Fire | | | |
| Label | Latitude | Longitude | Type |
| H-2 | 41° 29.513 | 123° 06.140 | HIGE, |
| H-3 | 41° 28.680 | 123° 04.151 | HIGE, |
| Shelly Dip Site | 41° 28.525 | 123° 3.737 | Dip Site, Appx. 6,900 ft |
| Kidder Dip Site | 41° 30.970 | 123° 6.270 | Dip Site, Appx. 6,900 ft |
| Campbell Dip | 41° 31.58 | 123° 06.21 | Dip Site |
| Kidder Creek Dip | 41° 30.975 | 122° 59.446 | Dip Site, Appx. 3,200 ft |
| Cliff Dip Site | 41° 31.409 | 123° 6.786 | Dip Site |