

122°41'0"W 122°40'30"W 122°40'0"W 122°39'30"W 122°39'0"W 122°38'30"W 122°38'0"W



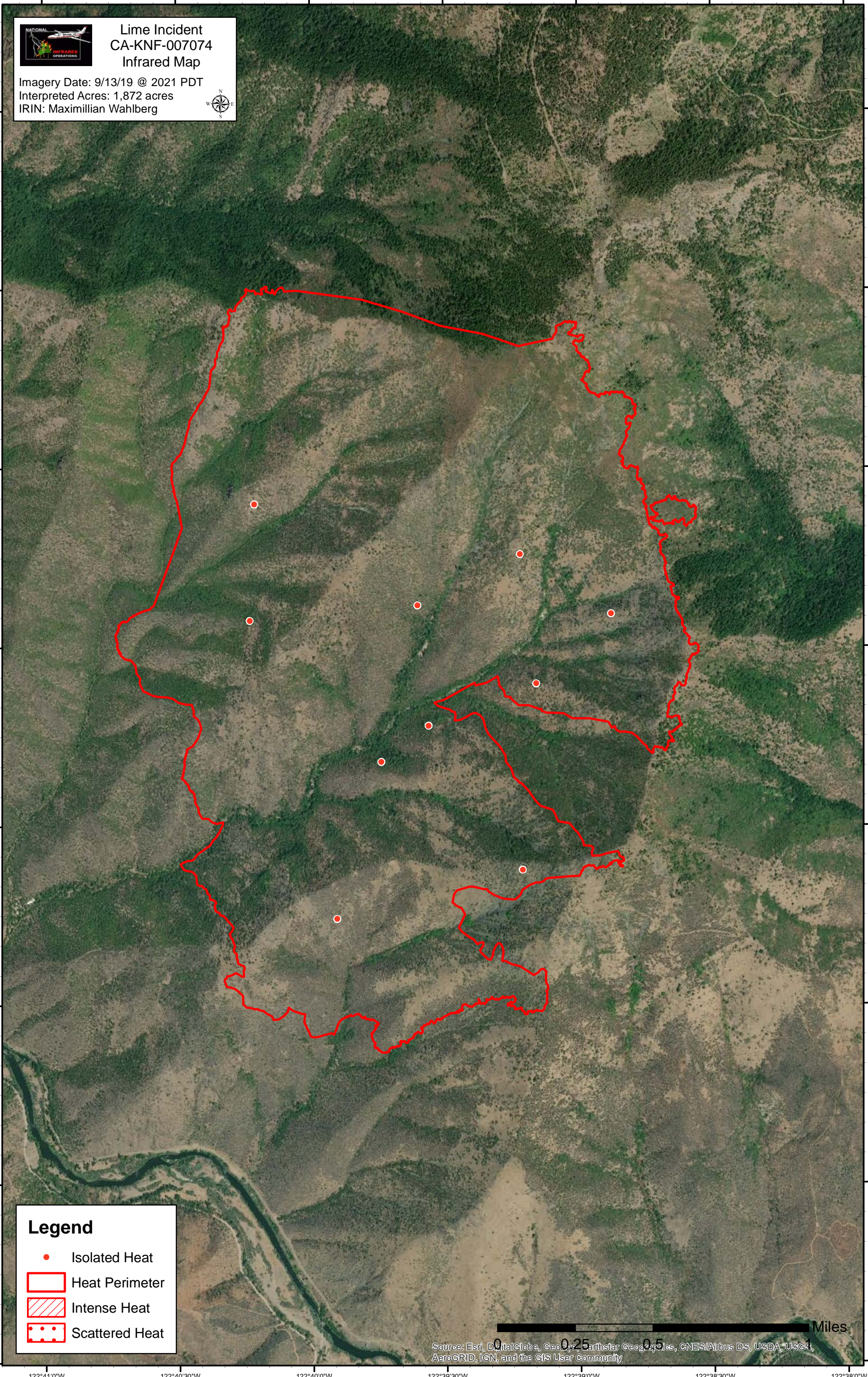
Lime Incident CA-KNF-007074 Infrared Map

Imagery Date: 9/13/19 @ 2021 PDT
Interpreted Acres: 1,872 acres
IRIN: Maximillian Wahlberg



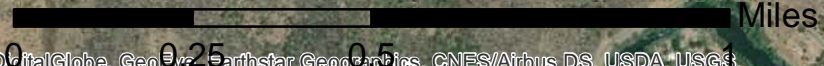
41°53'30"N
41°53'0"N
41°52'30"N
41°52'0"N
41°51'30"N
41°51'0"N
41°50'30"N
41°50'0"N

41°53'30"N
41°53'0"N
41°52'30"N
41°52'0"N
41°51'30"N
41°51'0"N
41°50'30"N
41°50'0"N



Legend

- Isolated Heat
- Heat Perimeter
- Intense Heat
- Scattered Heat



Source: Esri, DigitalGlobe, GeoEye, Earthstar Geographics, CNES/Airbus DS, USDA, USGS, AeroGRID, IGN, and the GIS User Community

122°41'0"W 122°40'30"W 122°40'0"W 122°39'30"W 122°39'0"W 122°38'30"W 122°38'0"W