

**Air OPS**  
 Kidder 2 Fire  
 CA-KNF-7099  
 9/13/2019 Day Shift

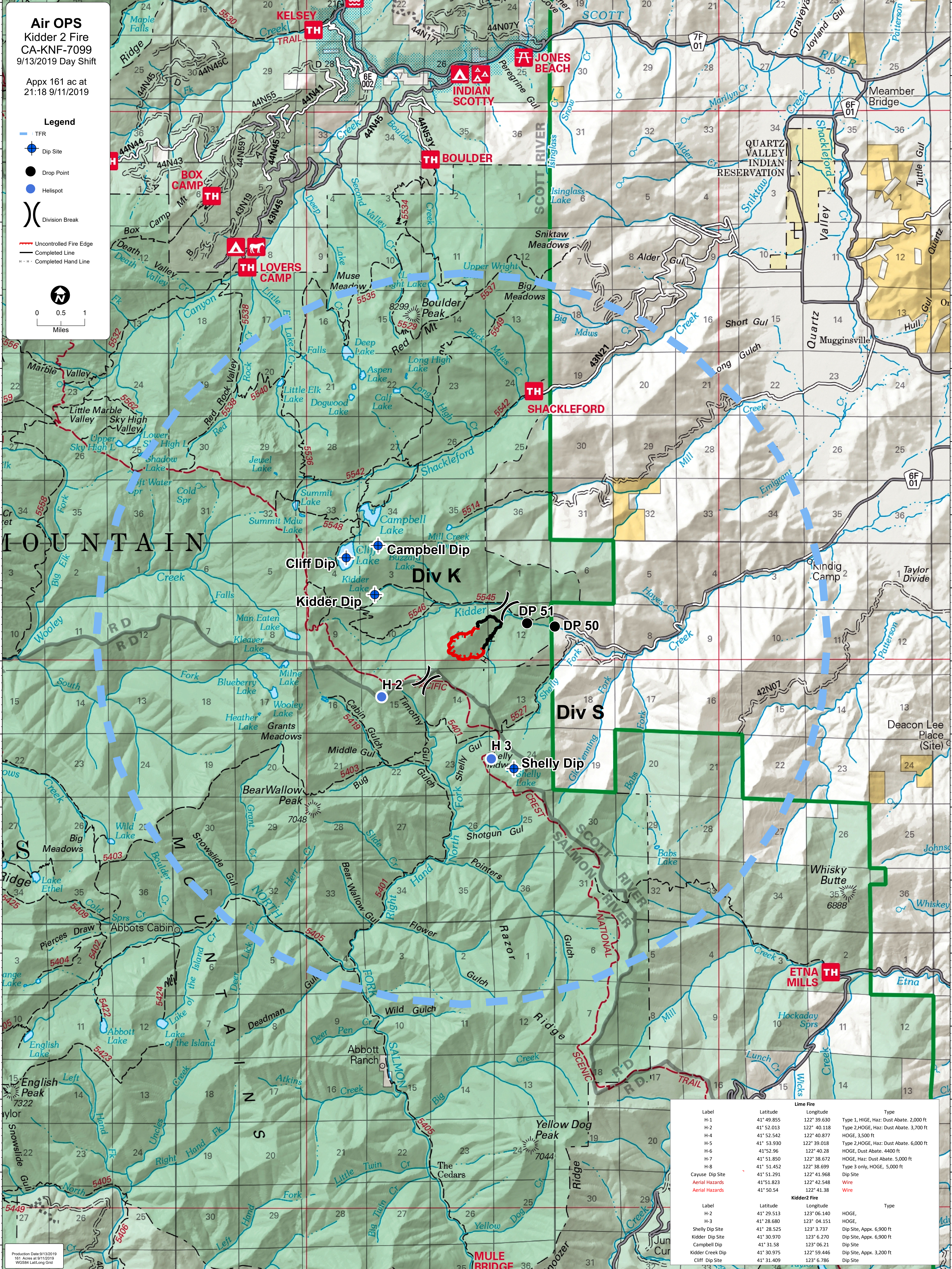
Appx 161 ac at  
 21:18 9/11/2019

**Legend**

- TFR
- Dip Site
- Drop Point
- Helispot
- ) Division Break
- Uncontrolled Fire Edge
- Completed Line
- - - Completed Hand Line



0 0.5 1  
 Miles



Line Fire			
Label	Latitude	Longitude	Type
H-1	41° 49.855	122° 39.630	Type 1, HIGE, Haz: Dust Abate, 2,000 ft
H-2	41° 52.013	122° 40.118	Type 2, HIGE, Haz: Dust Abate, 3,700 ft
H-4	41° 52.542	122° 40.877	HIGE, 3,500 ft
H-5	41° 53.930	122° 39.018	Type 2, HIGE, Haz: Dust Abate, 6,000 ft
H-6	41° 52.96	122° 40.28	HIGE, Dust Abate, 4,400 ft
H-7	41° 51.850	122° 38.672	HIGE, Haz: Dust Abate, 5,000 ft
H-8	41° 51.452	122° 38.699	Type 3 only, HIGE, 5,000 ft
Cayuse Dip Site	41° 51.291	122° 41.968	Dip Site
Aerial Hazards	41° 51.823	122° 42.548	Wire
Aerial Hazards	41° 50.54	122° 41.38	Wire

Kidder 2 Fire			
Label	Latitude	Longitude	Type
H-2	41° 29.513	123° 06.140	HIGE,
H-3	41° 28.680	123° 04.151	HIGE,
Shelly Dip Site	41° 28.525	123° 3.737	Dip Site, Appx. 6,900 ft
Kidder Dip Site	41° 30.970	123° 6.270	Dip Site, Appx. 6,900 ft
Campbell Dip	41° 31.58	123° 06.21	Dip Site
Kidder Creek Dip	41° 30.975	122° 59.446	Dip Site, Appx. 3,200 ft
Cliff Dip Site	41° 31.409	123° 6.786	Dip Site