

121°17'0"W

121°16'0"W

121°15'0"W

40°30'0"N

40°30'0"N

40°29'0"N

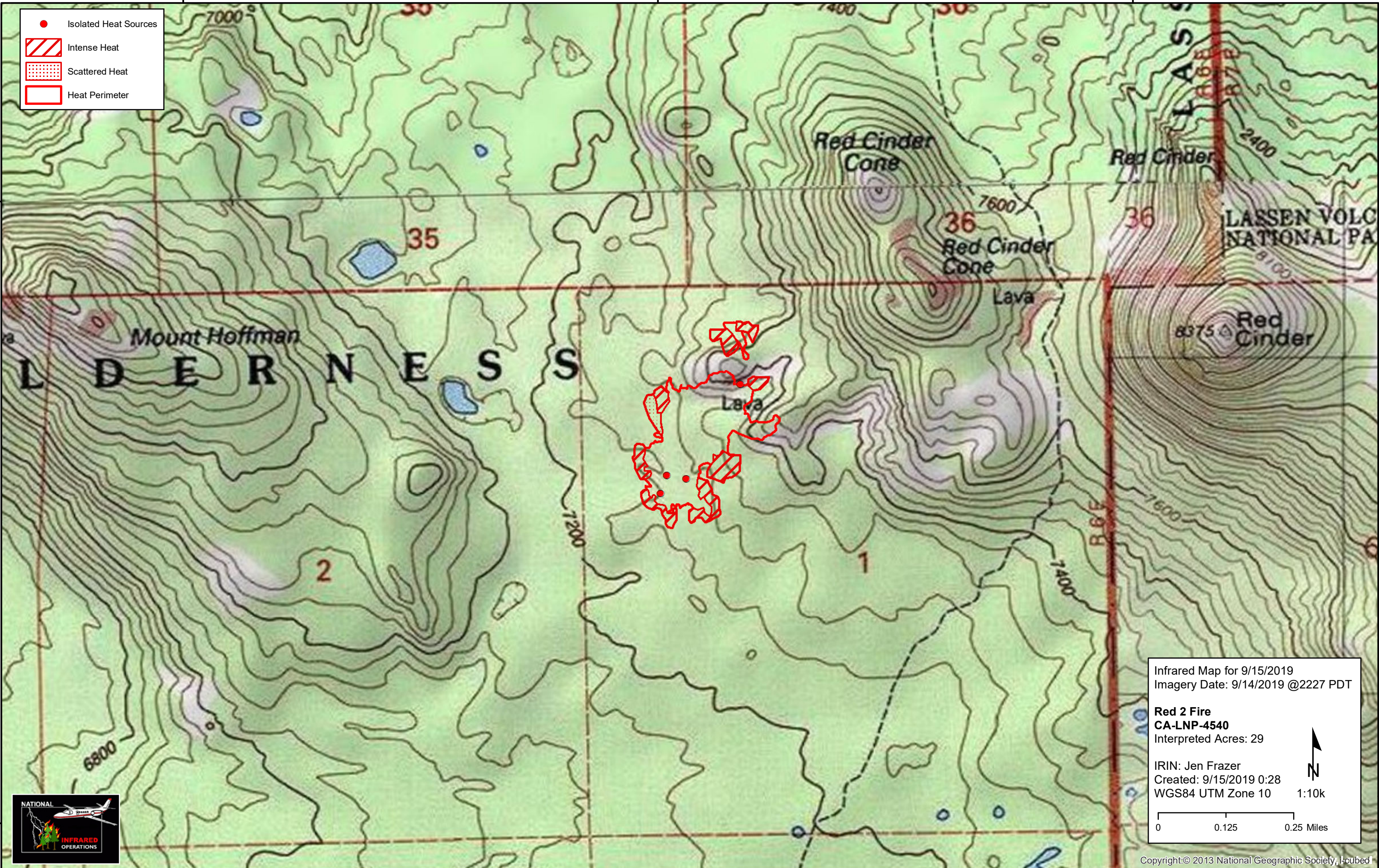
40°29'0"N

121°17'0"W

121°16'0"W

121°15'0"W

- Isolated Heat Sources
- / / / / Intense Heat
- Scattered Heat
- Heat Perimeter



Infrared Map for 9/15/2019
 Imagery Date: 9/14/2019 @2227 PDT

Red 2 Fire
CA-LNP-4540
 Interpreted Acres: 29

IRIN: Jen Frazer
 Created: 9/15/2019 0:28
 WGS84 UTM Zone 10

1:10k

0 0.125 0.25 Miles

