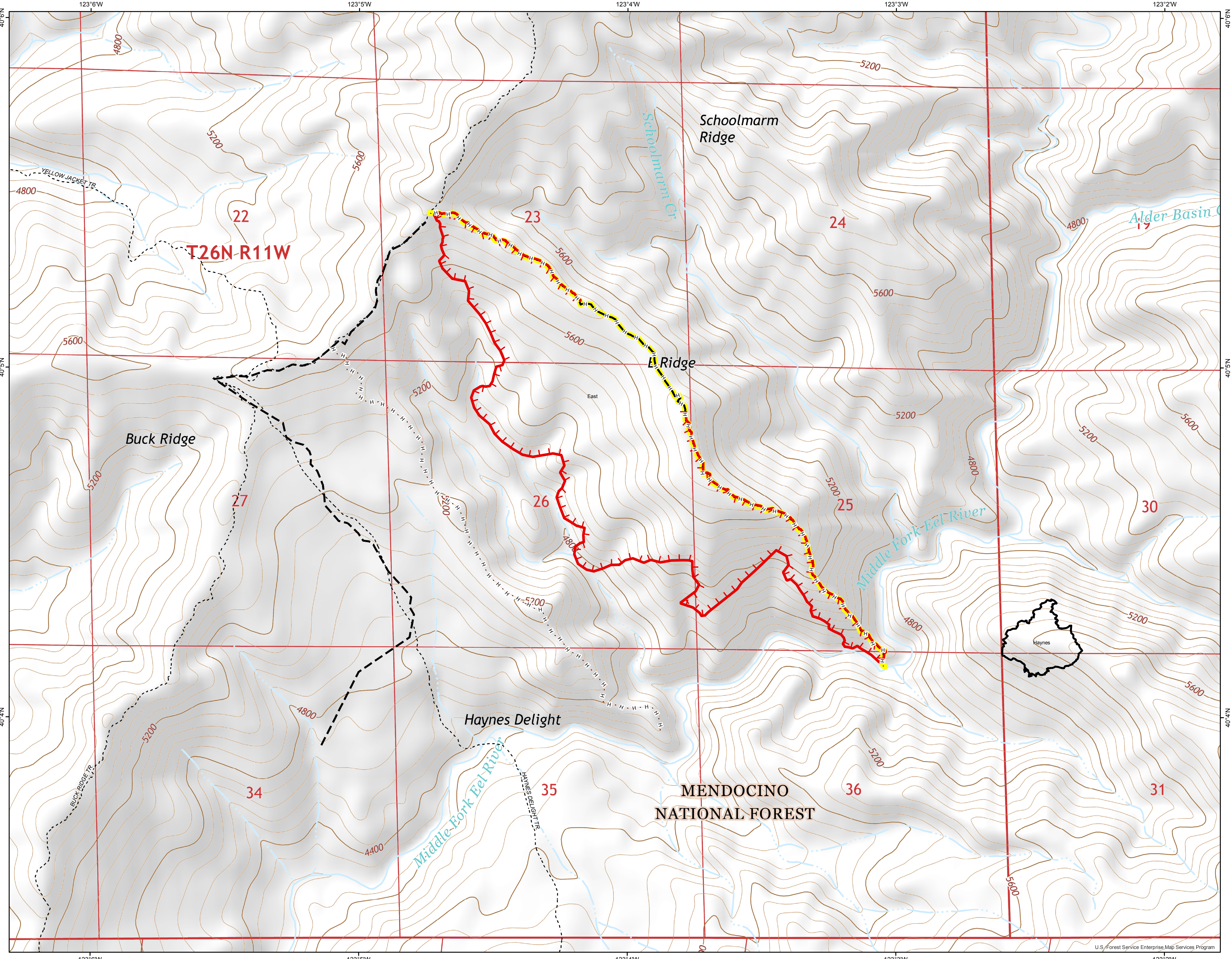


Suppression Repair Map

East Fire CAMNF-000241

6/28/2019



- Uncontrolled Fire Edge
 - Completed Line
 - Completed Hand Line
 - Planned Fire Line
- Line Repair Status**
- No Repair Needed
 - Repair Needed
 - Trail
 - Paved Road
 - Gravel Road, Suitable for Passenger Car
 - Dirt Road, Suitable for Passenger Car
 - Road, Not Maintained for Passenger Car
 - National Forest System Roads closed to motorized uses



UTM Zone 10 NAD 83

