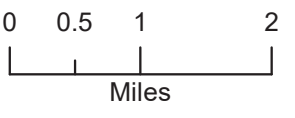
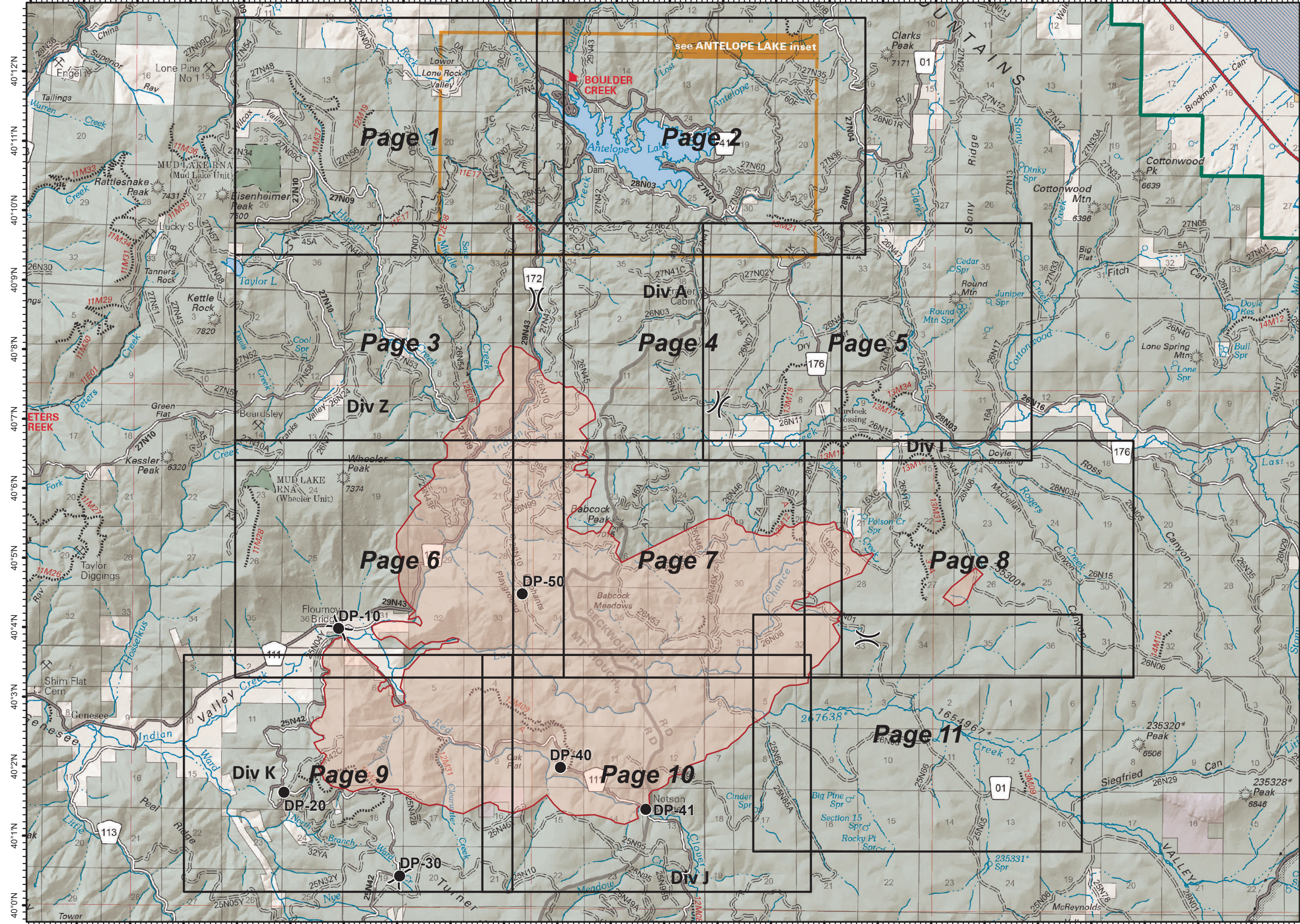




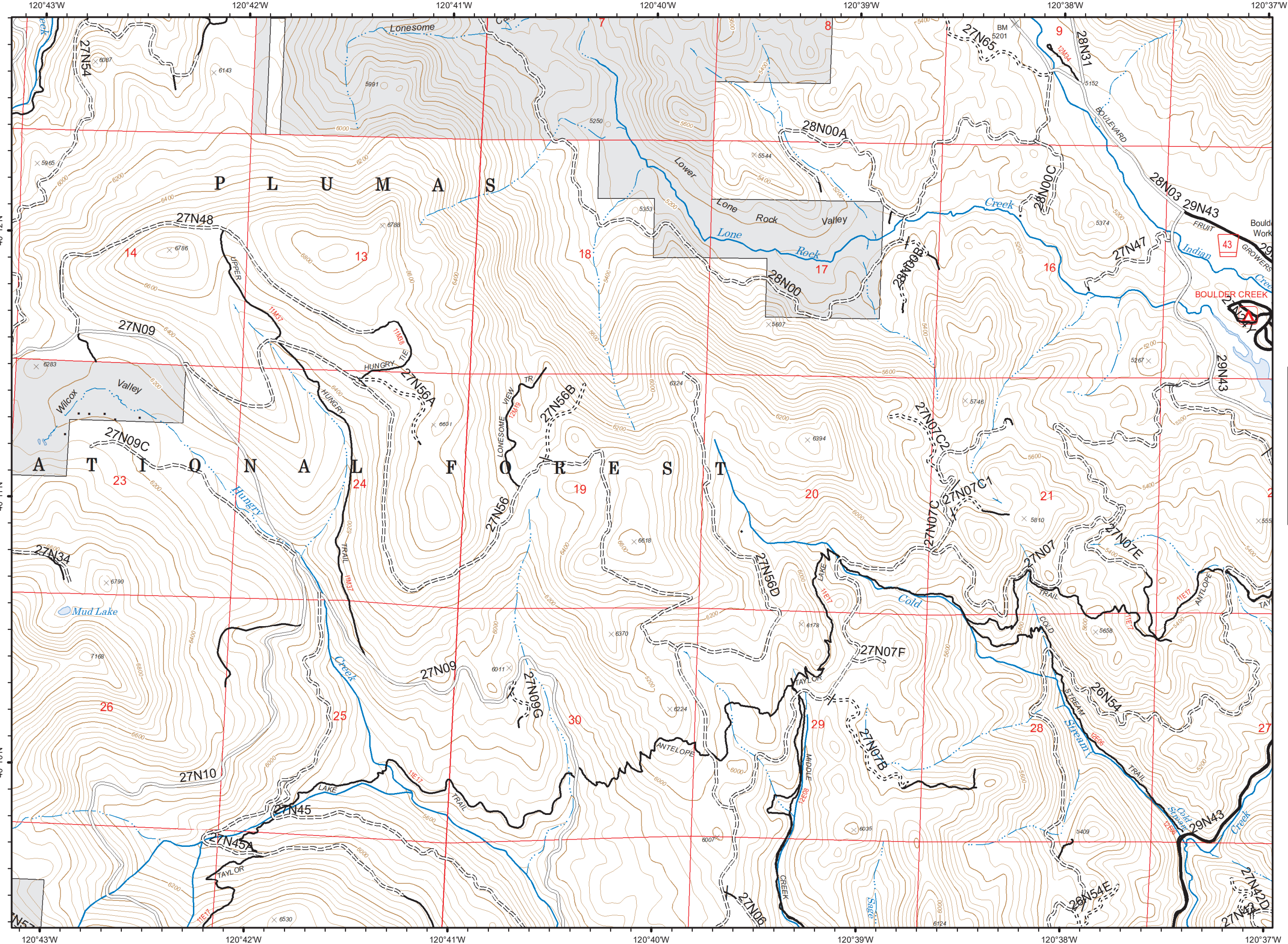


120°47'W 120°46'W 120°45'W 120°44'W 120°43'W 120°42'W 120°41'W 120°40'W 120°39'W 120°38'W 120°37'W 120°36'W 120°35'W 120°34'W 120°33'W 120°32'W 120°31'W 120°30'W 120°29'W 120°28'W 120°27'W 120°26'W 120°25'W 120°24'W

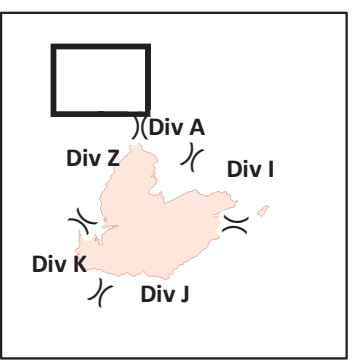
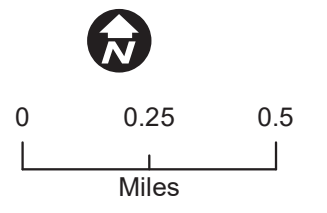
IAP Tile Index
Walker
CA-PNF-001324
September 7 Day Shift



-  IAP Tiles
-  Drop Point
-  Division Break
-  Wildfire Daily Fire Perimeter

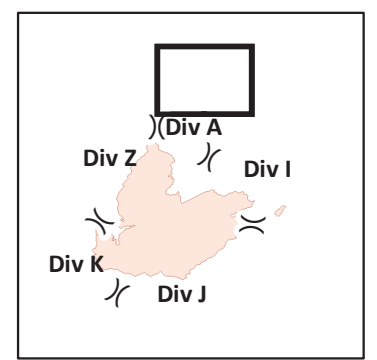
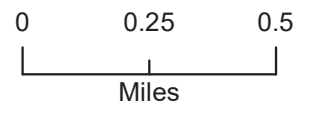


Fire perimeter was estimated at 2200 on 9/6 and is an approximate location

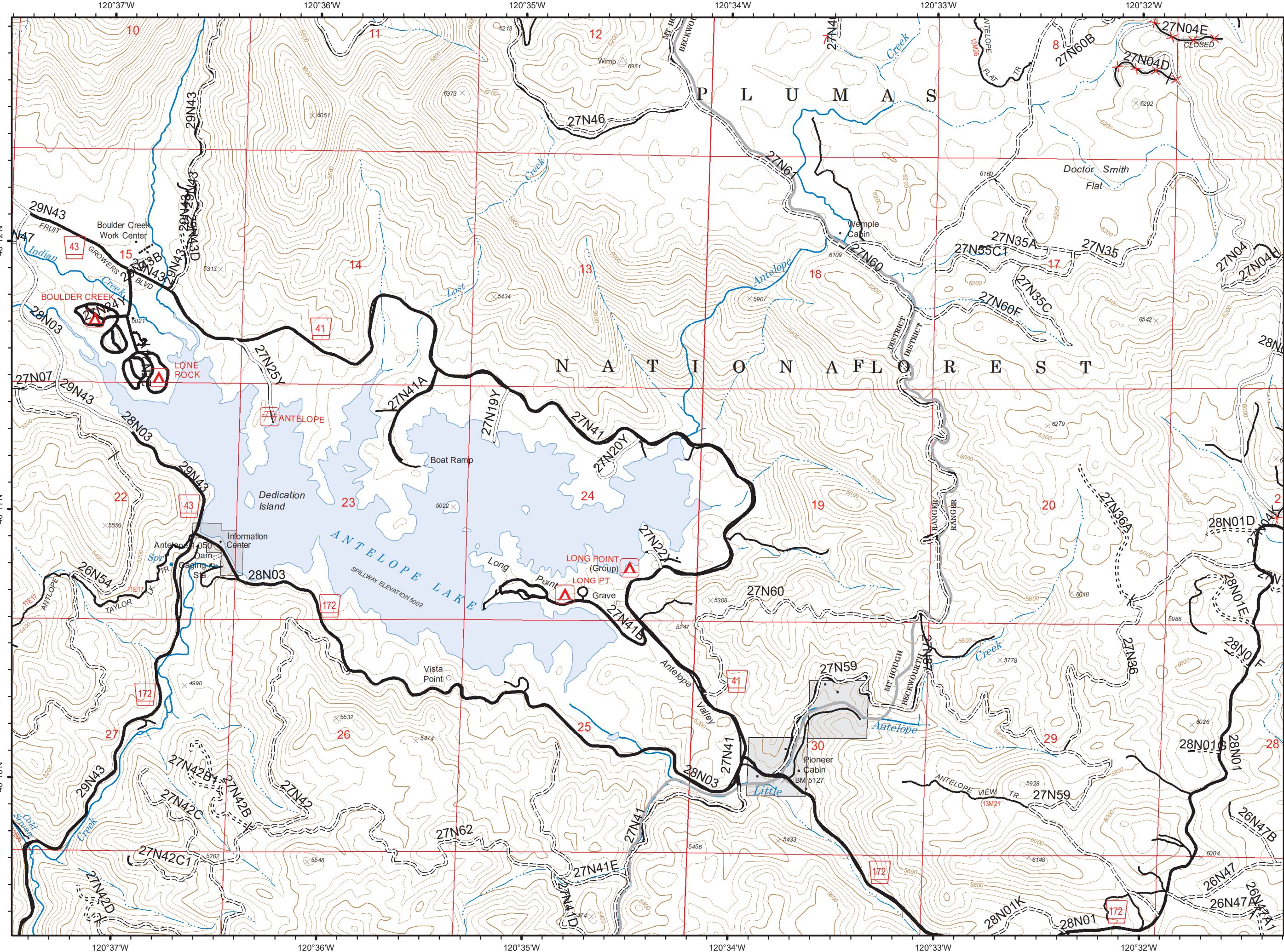


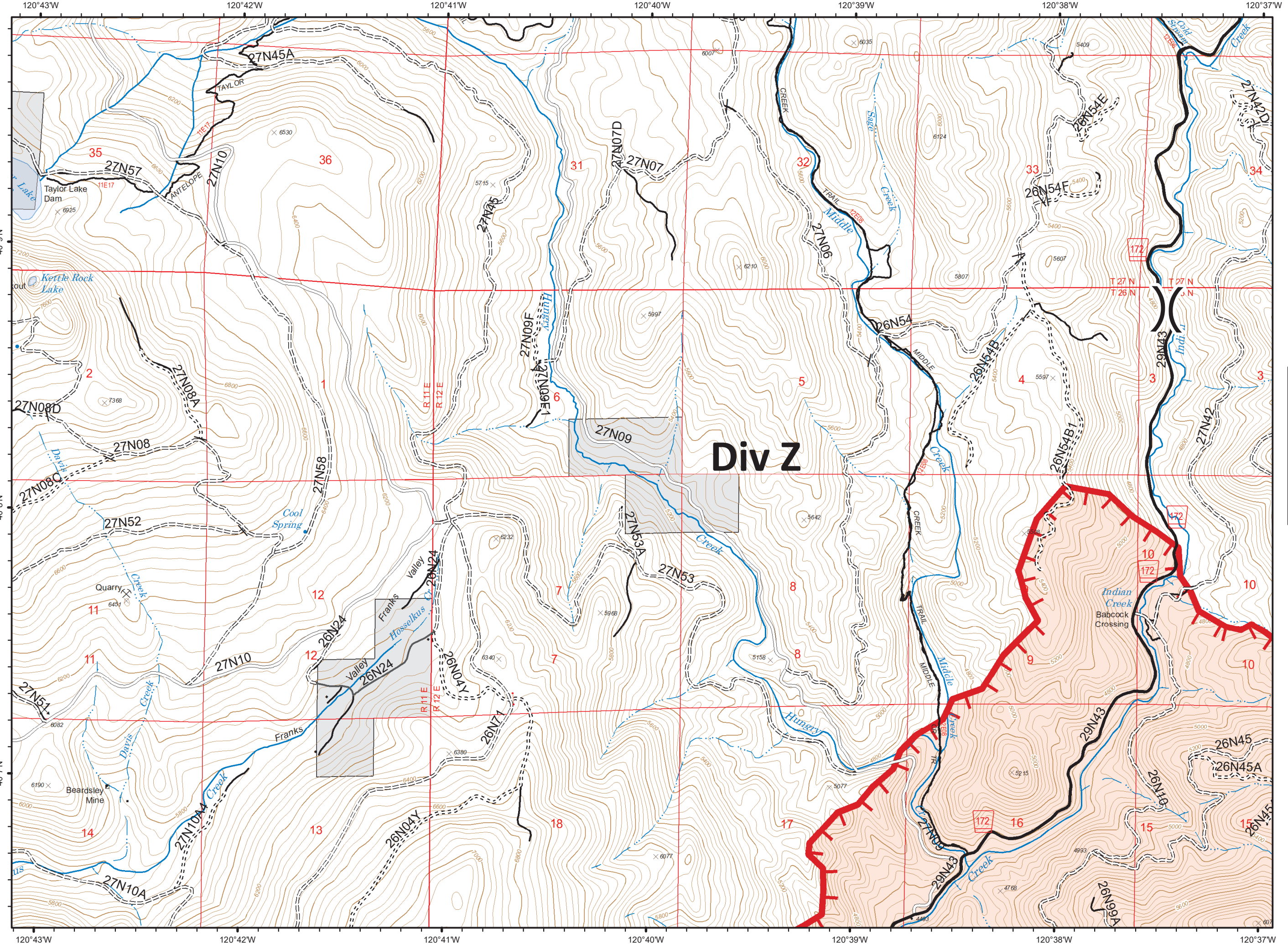
- Basic Custodial Care (Closed)
- ==== High Clearance Roads
- Suitable for Passenger Cars
- High Degree of Comfort
- travelRoute
- Non-FS Lands

Fire perimeter was estimated at 2200 on 9/6 and is an approximate location

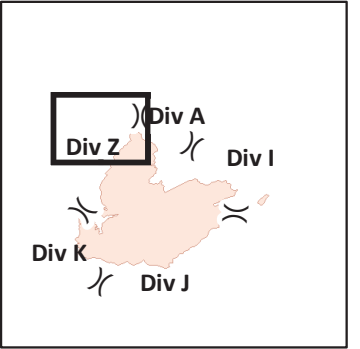
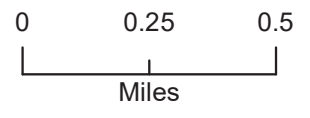


- Basic Custodial Care (Closed)
- ==== High Clearance Roads
- Suitable for Passenger Cars
- High Degree of Comfort
- ×× NFSR Decommissioned
- travelRoute
- Non-FS Lands



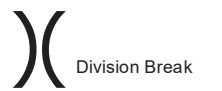
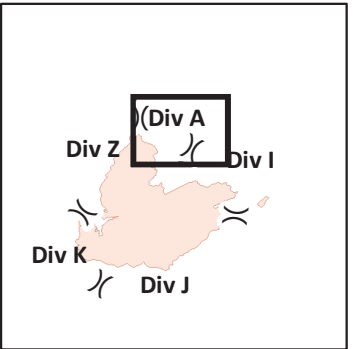
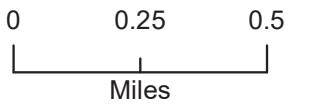


Fire perimeter was estimated at 2200 on 9/6 and is an approximate location

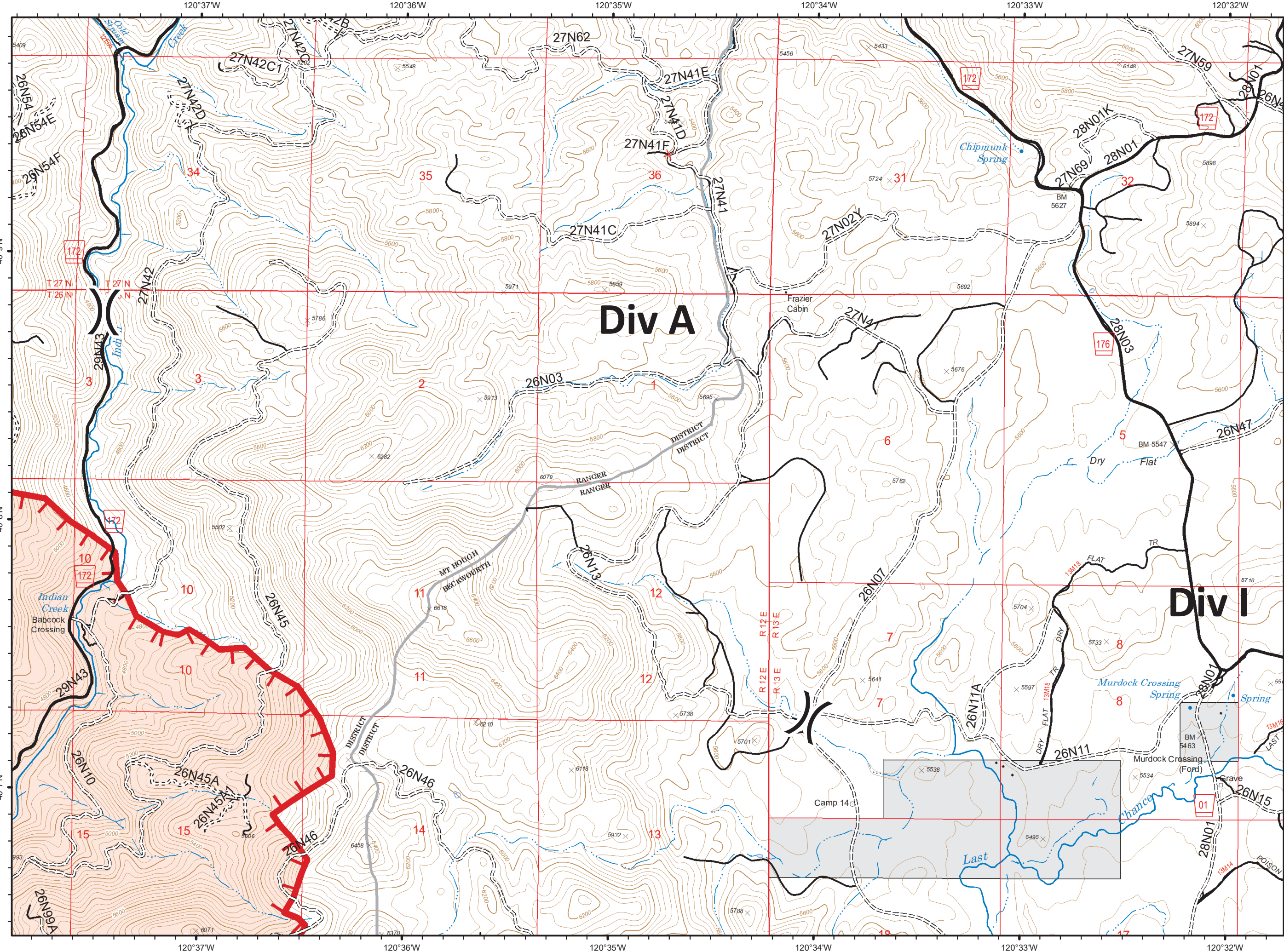


- Uncontrolled Fire Edge
- Wildfire Daily Fire Perimeter
- P - PRIVATE
- Basic Custodial Care (Closed)
- High Clearance Roads
- Suitable for Passenger Cars
- High Degree of Comfort
- travelRoute
- Non-FS Lands

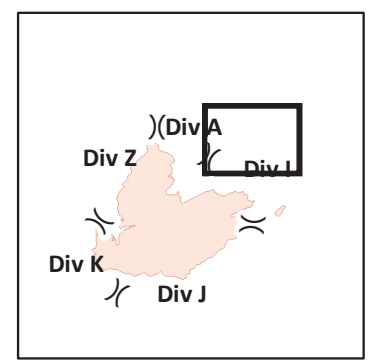
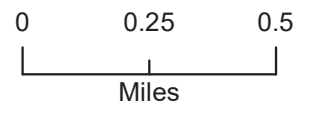
Fire perimeter was estimated at 2200 on 9/6 and is an approximate location



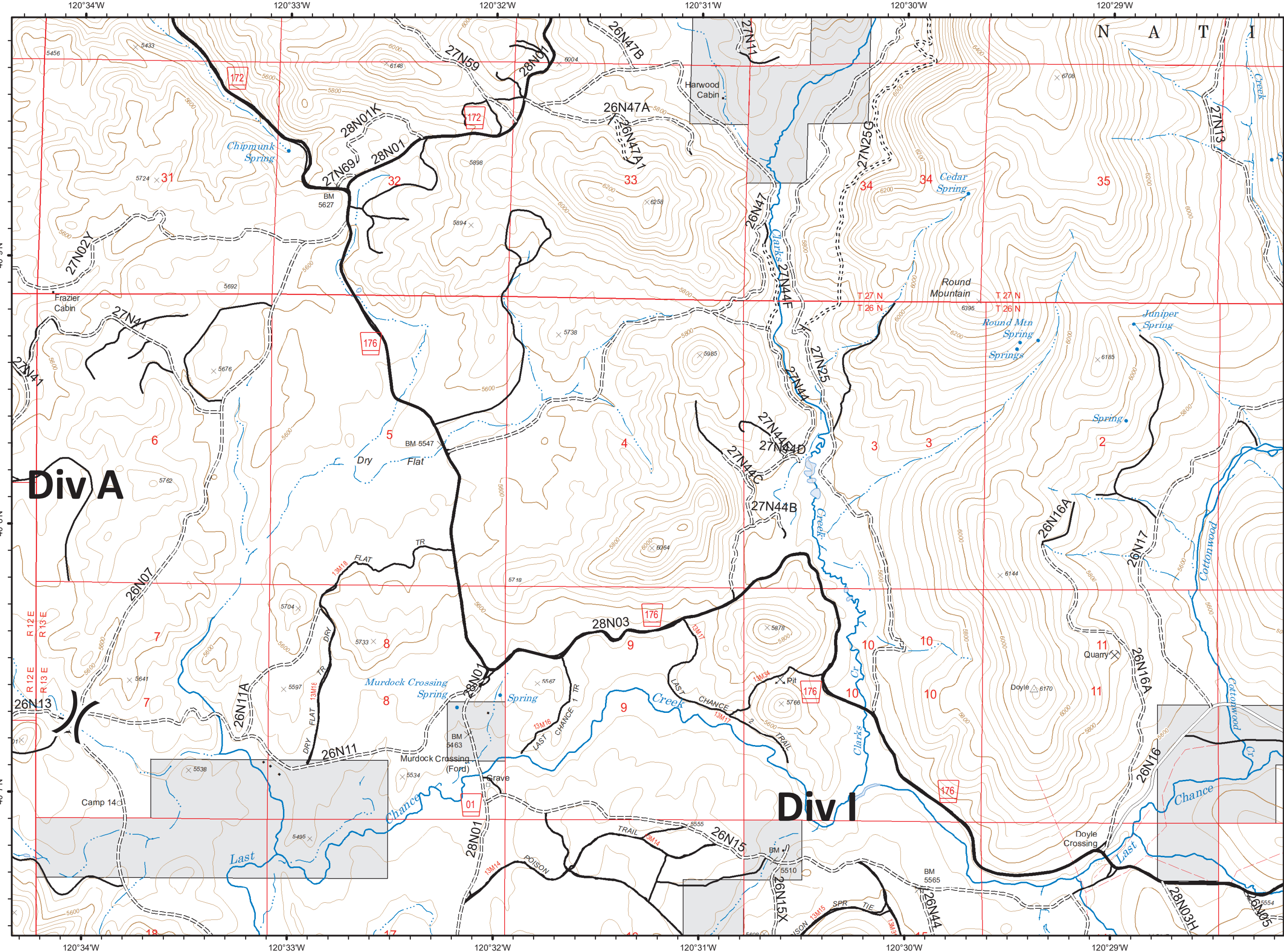
- Uncontrolled Fire Edge
- Wildfire Daily Fire Perimeter
- Basic Custodial Care (Closed)
- High Clearance Roads
- High Degree of Comfort
- Undetermined Decommissioned
- travelRoute
- Non-FS Lands



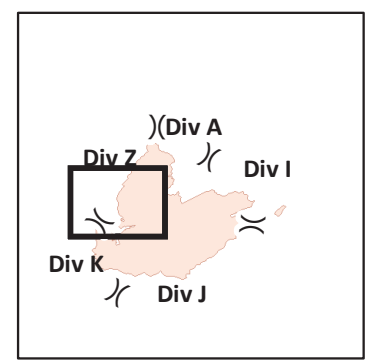
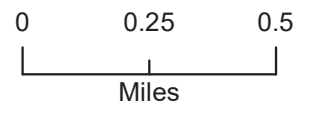
Fire perimeter was estimated at 2200 on 9/6 and is an approximate location



- NOT - NOT NEEDED
- Basic Custodial Care (Closed)
- High Clearance Roads
- Suitable for Passenger Cars
- High Degree of Comfort
- travelRoute
- Non-FS Lands

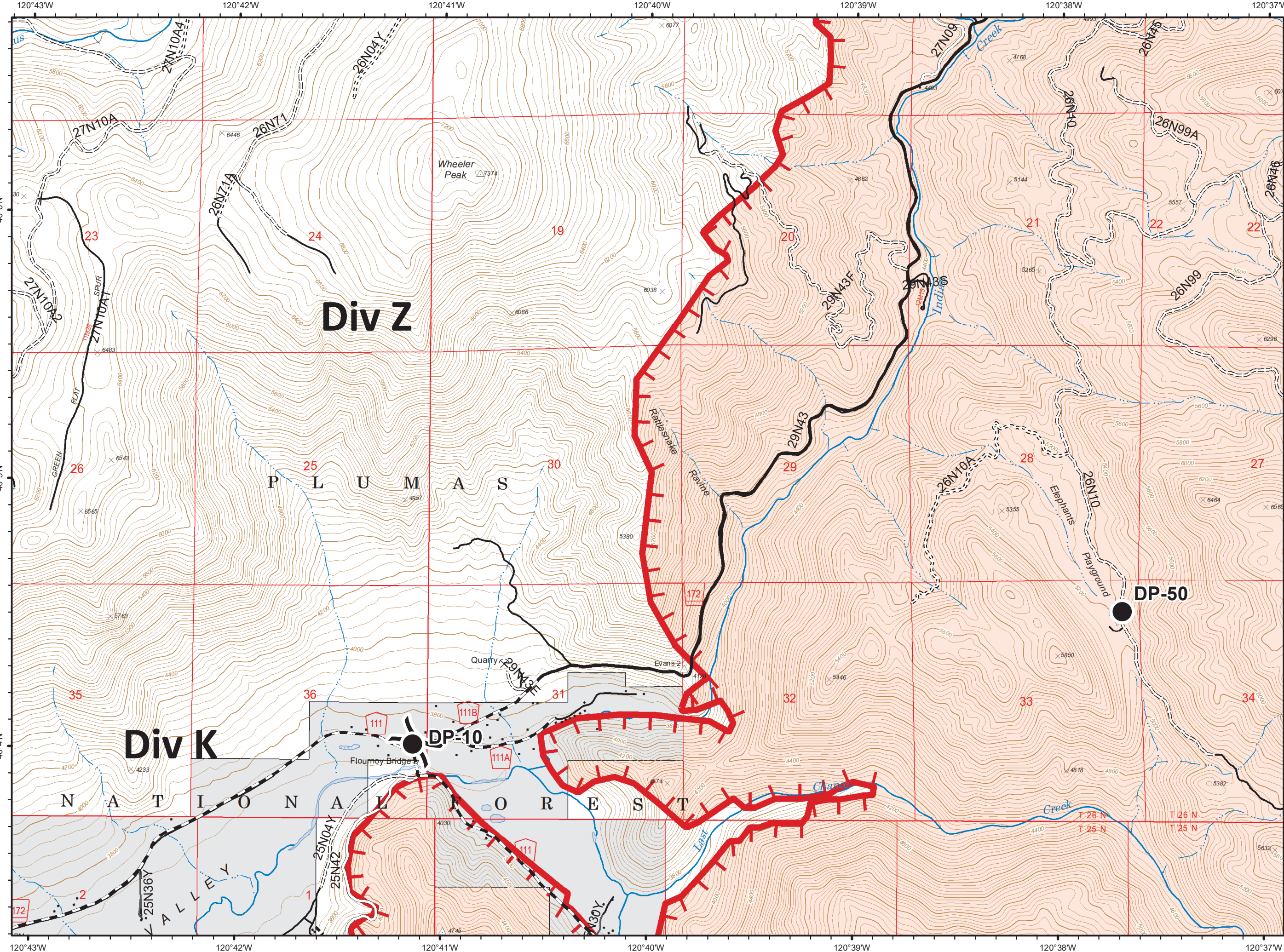


Fire perimeter was estimated at 2200 on 9/6 and is an approximate location

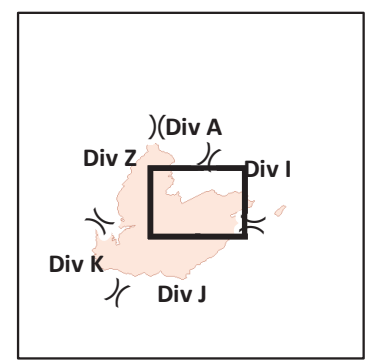
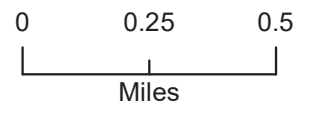


- Drop Point
- () Division Break

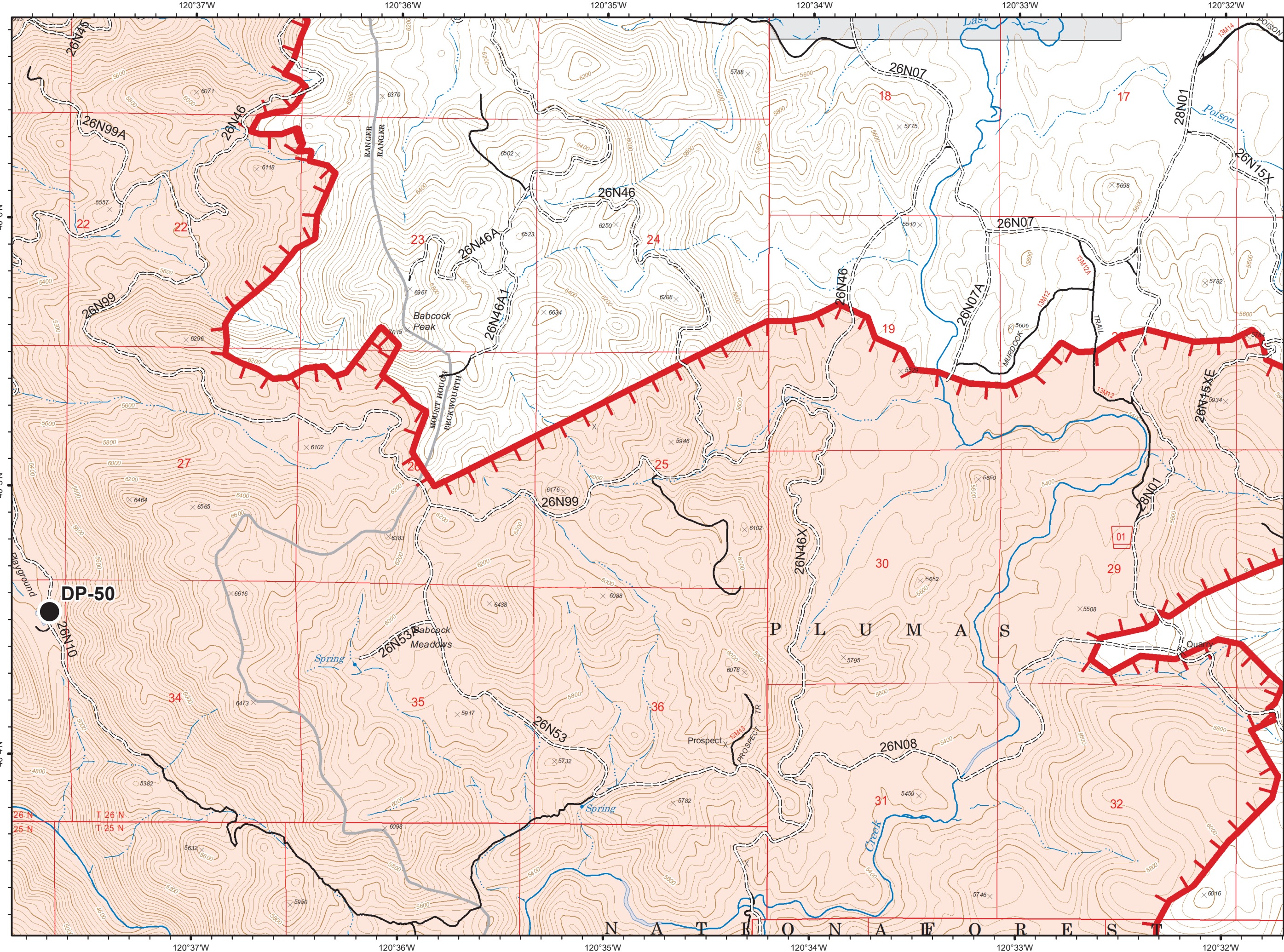
- Uncontrolled Fire Edge
- Wildfire Daily Fire Perimeter
- C - COUNTY, PARISH, BOROUGH
- NOT - NOT NEEDED
- P - PRIVATE
- Basic Custodial Care (Closed)
- High Clearance Roads
- Suitable for Passenger Cars
- High Degree of Comfort
- travelRoute
- Non-FS Lands



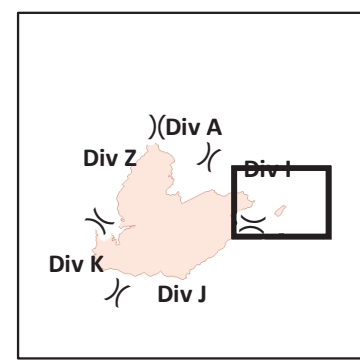
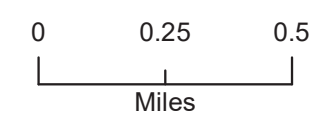
Fire perimeter was estimated at 2200 on 9/6 and is an approximate location



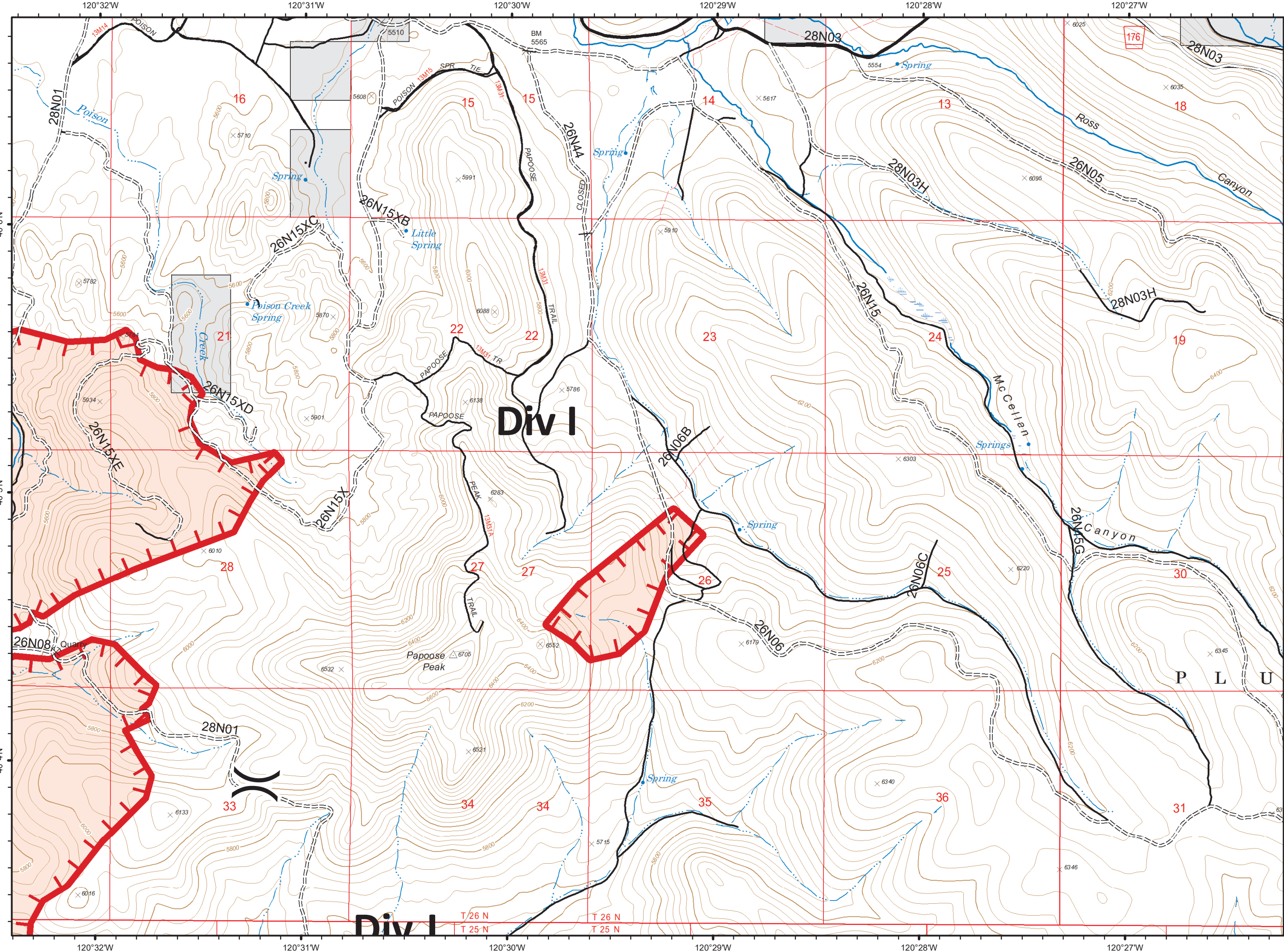
- Drop Point
- ▬ Uncontrolled Fire Edge
- ▭ Wildfire Daily Fire Perimeter
- === High Clearance Roads
- travelRoute
- ▭ Non-FS Lands



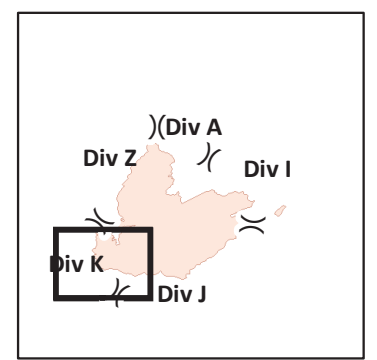
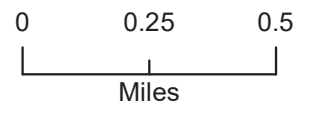
Fire perimeter was estimated at 2200 on 9/6 and is an approximate location



- Uncontrolled Fire Edge
- Wildfire Daily Fire Perimeter
- NOT - NOT NEEDED
- High Clearance Roads
- Suitable for Passenger Cars
- High Degree of Comfort
- travelRoute
- Non-FS Lands

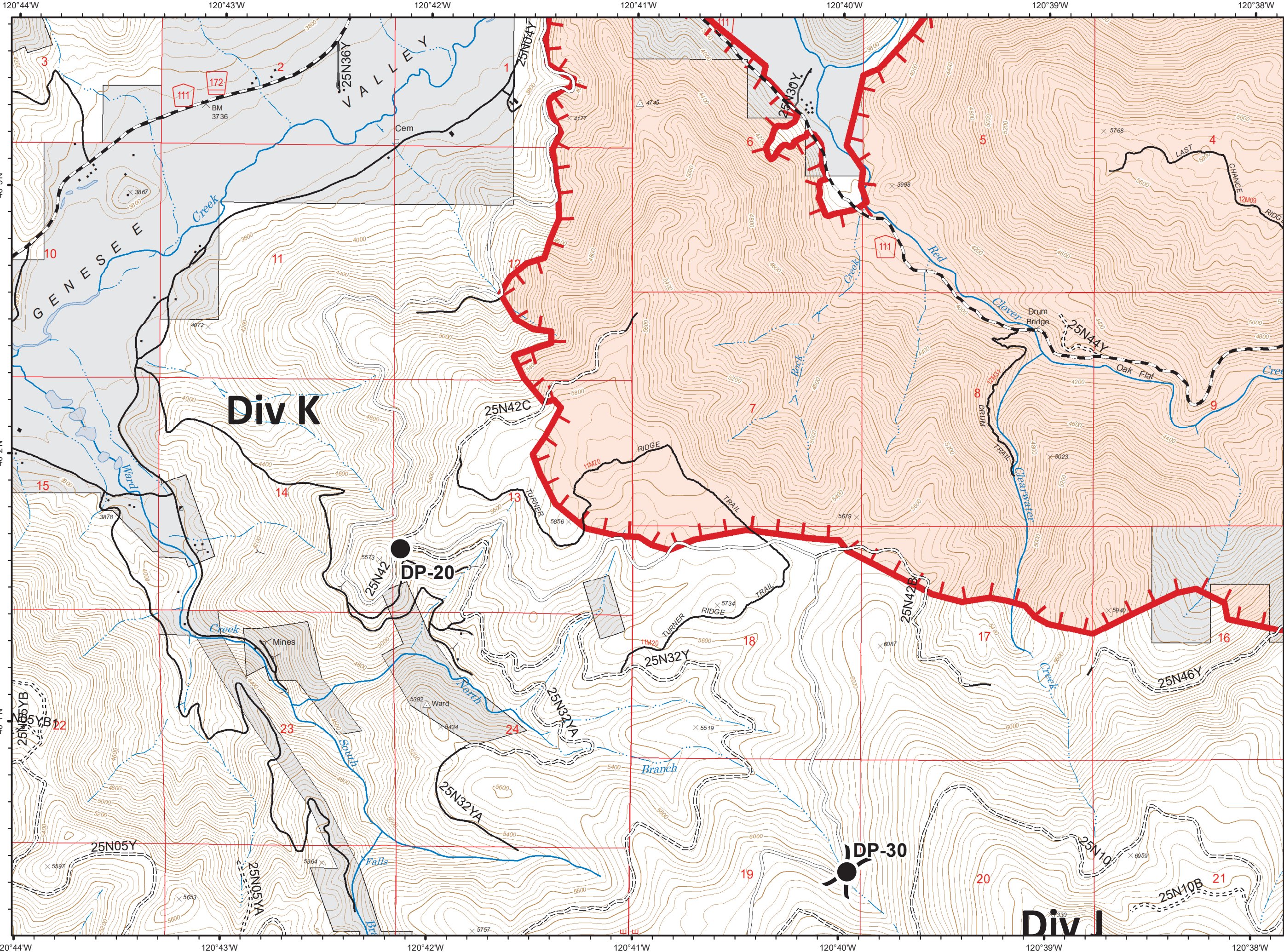


Fire perimeter was estimated at 2200 on 9/6 and is an approximate location

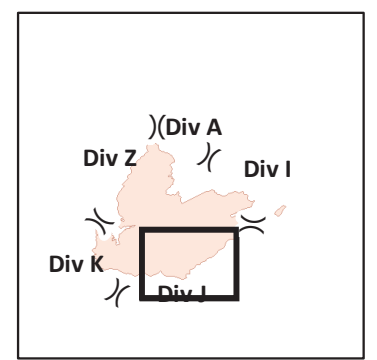
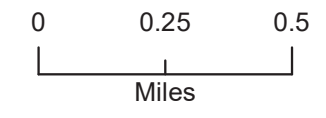


- Drop Point
- () Division Break

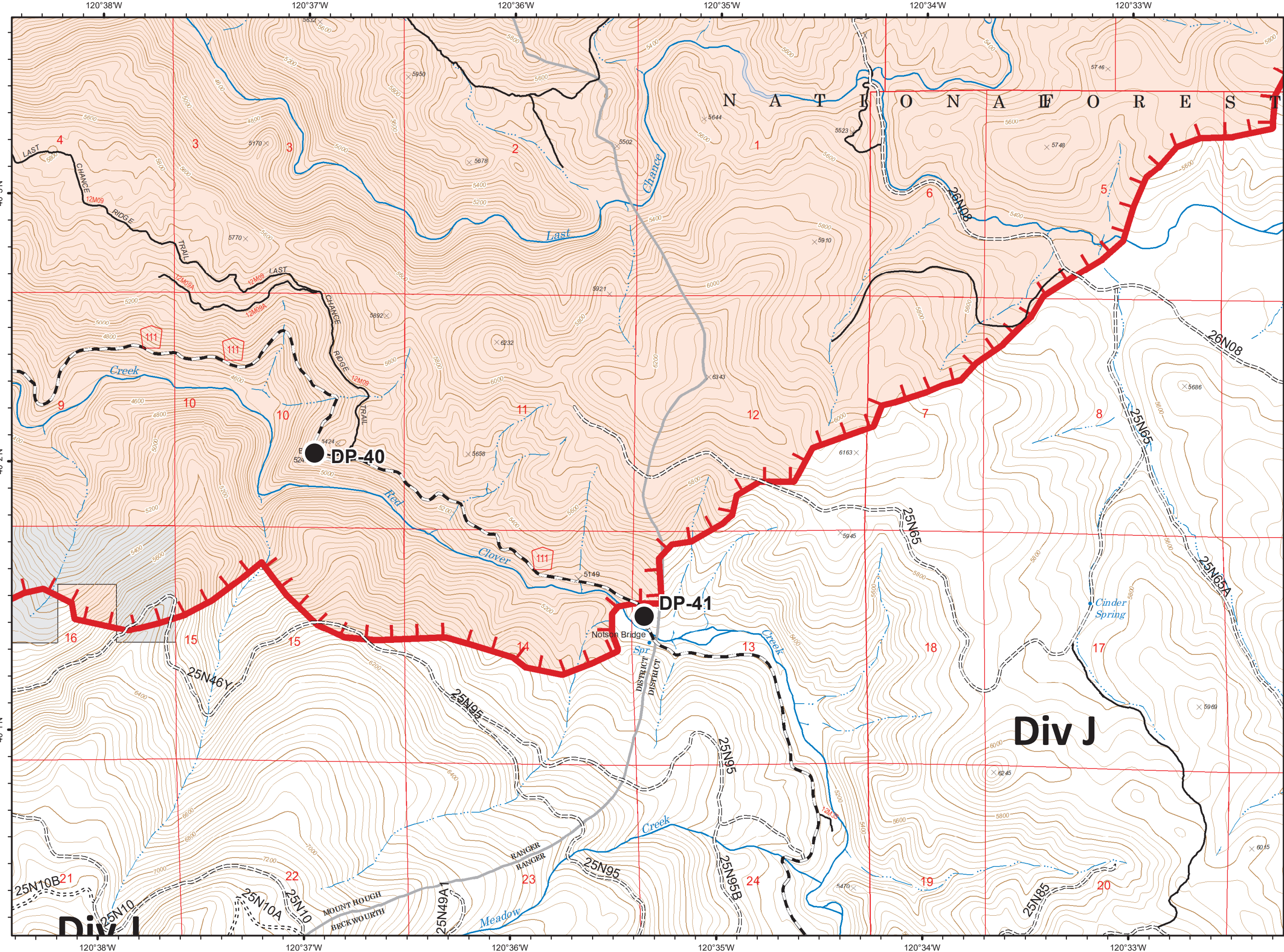
- ▬ Uncontrolled Fire Edge
- ▭ Wildfire Daily Fire Perimeter
- C - COUNTY, PARISH, BOROUGH
- NOT - NOT NEEDED
- P - PRIVATE
- ⋯ Basic Custodial Care (Closed)
- ⋯ High Clearance Roads
- ⋯ Suitable for Passenger Cars
- travelRoute
- ▭ Non-FS Lands



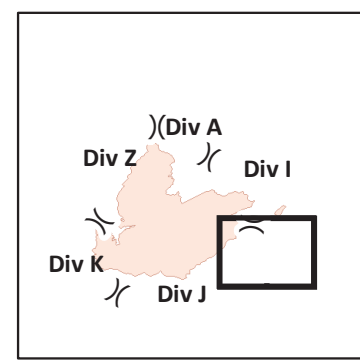
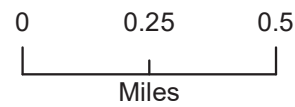
Fire perimeter was estimated
at 2200 on 9/6 and is an
approximate location



- Drop Point
- ▬ Uncontrolled Fire Edge
- ▬ Wildfire Daily Fire Perimeter
- ▬ C - COUNTY, PARISH, BOROUGH
- ▬ Basic Custodial Care (Closed)
- ▬ High Clearance Roads
- ▬ travelRoute
- ▬ Non-FS Lands



Fire perimeter was estimated at 2200 on 9/6 and is an approximate location



- Uncontrolled Fire Edge
- Wildfire Daily Fire Perimeter
- High Clearance Roads
- Undetermined, Unknown and Other
- travelRoute

