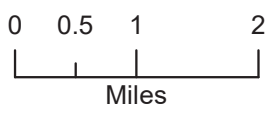




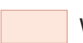


IAP Tile Index
Walker
CA-PNF-001324
September 8 Day Shift

38,049 Acres
IR 9/7 1935 PDT



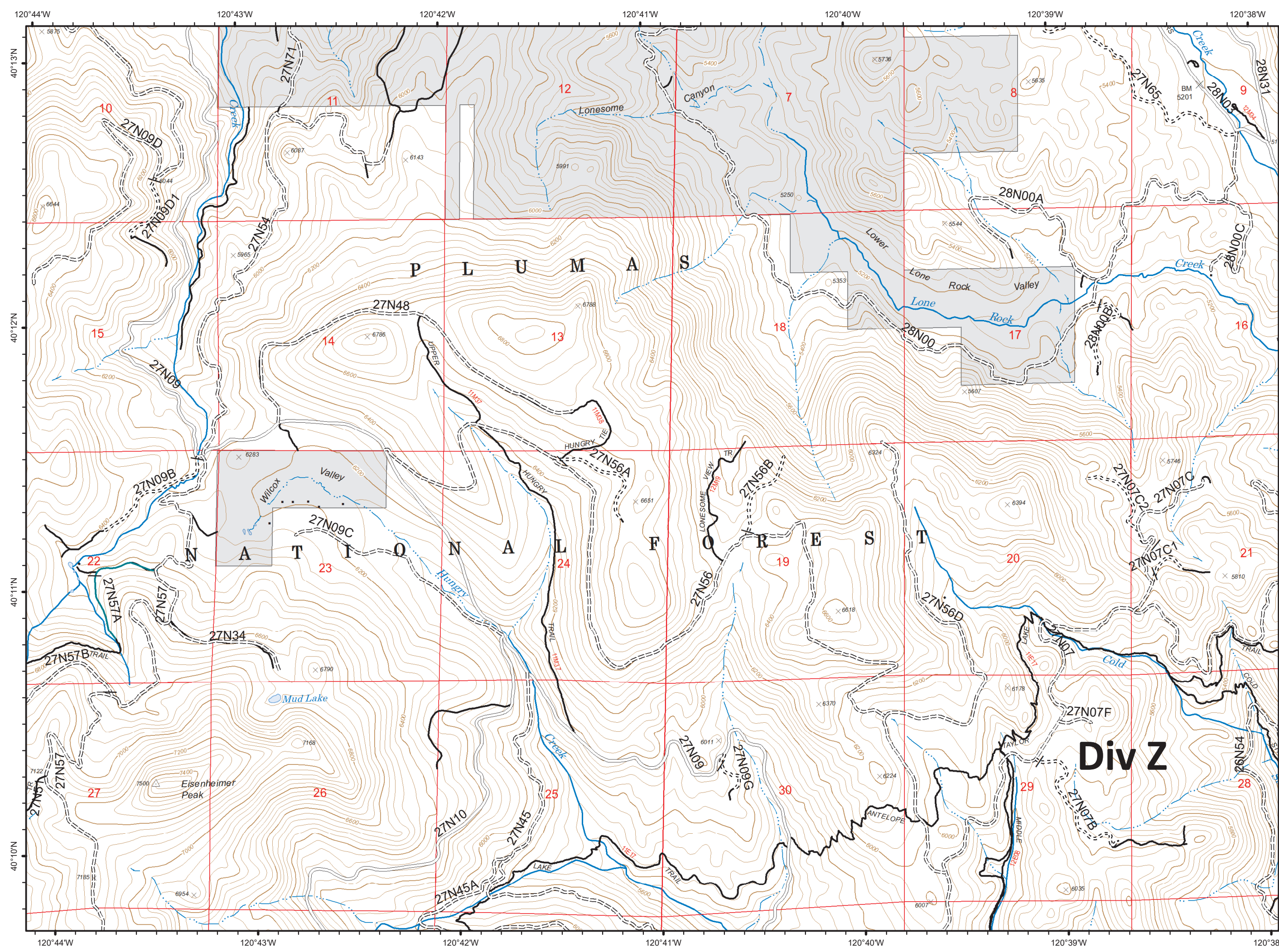
-  IAP Tiles
-  Drop Point
-  Fire Origin
-  Division Break
-  Wildfire Daily Fire Perimeter



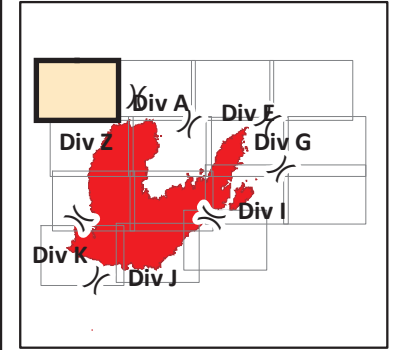
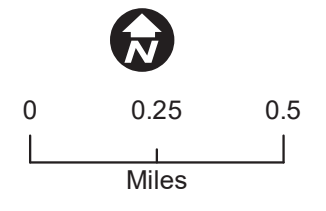
Mobile Maps

S Penny
9/8 0100
WGS84 Lat/Lon Grid





38,049 Acres
IR 9/7 1935 PDT

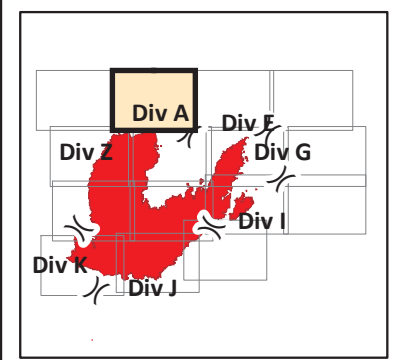
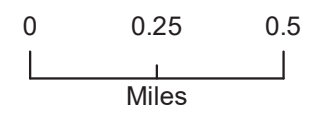


- NOT - NOT NEEDED
- <all other values>
- ==== Basic Custodial Care (Closed)
- ==== High Clearance Roads
- Suitable for Passenger Cars
- travelRoute
- National Forest
- Non-FS

S Penny
9/8 0100
WGS84 Lat/Lon Grid

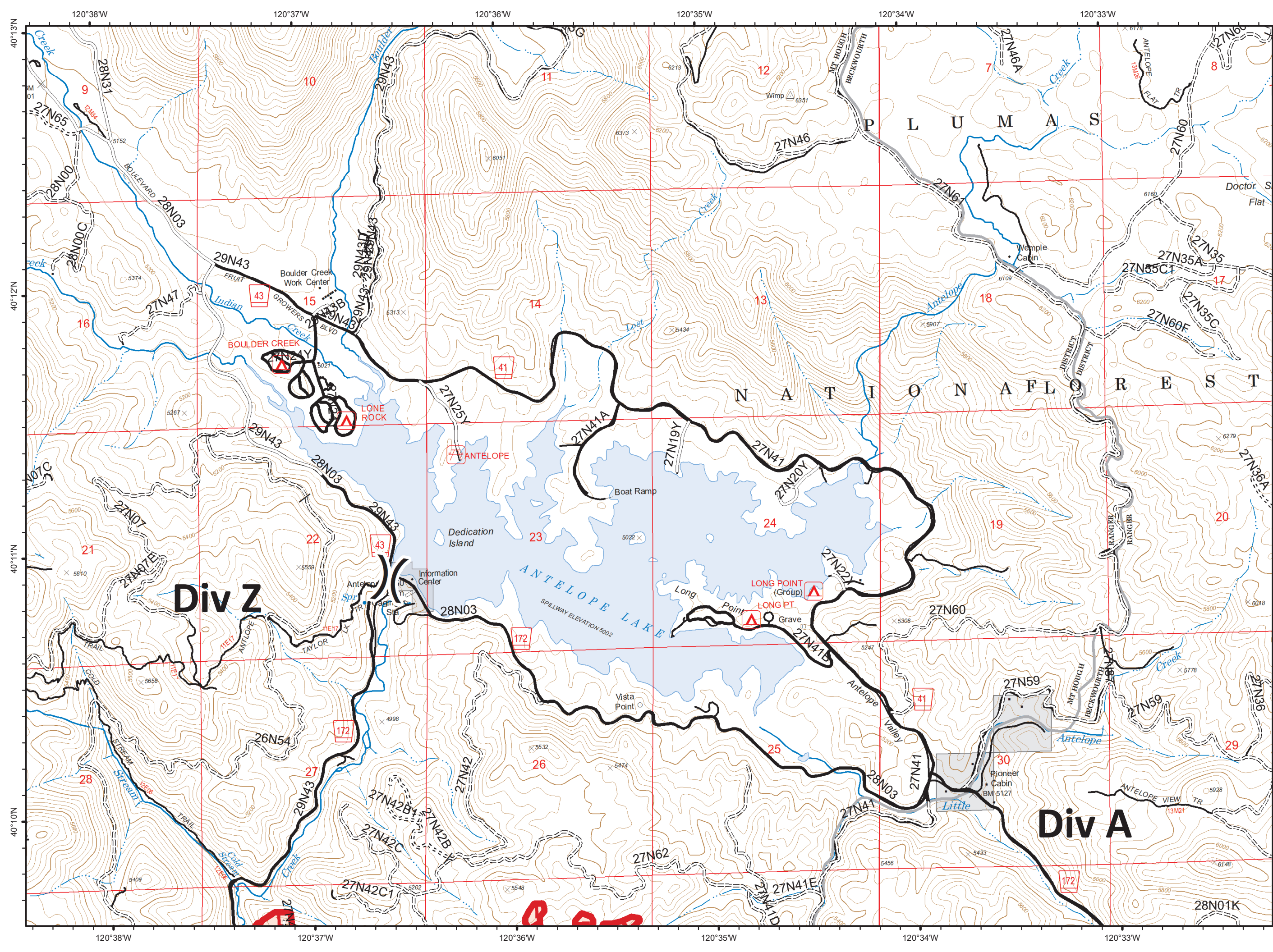


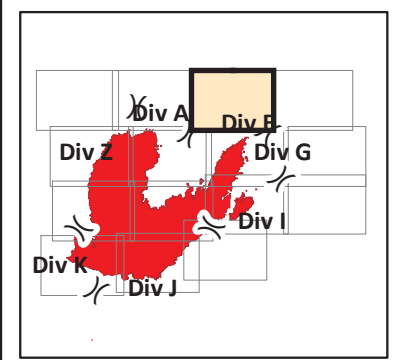
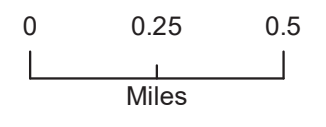
38,049 Acres
IR 9/7 1935 PDT



- Uncontrolled Fire Edge
- Wildfire Daily Fire Perimeter
- Basic Custodial Care (Closed)
- High Clearance Roads
- Suitable for Passenger Cars
- High Degree of Comfort
- travelRoute
- National Forest
- Non-FS

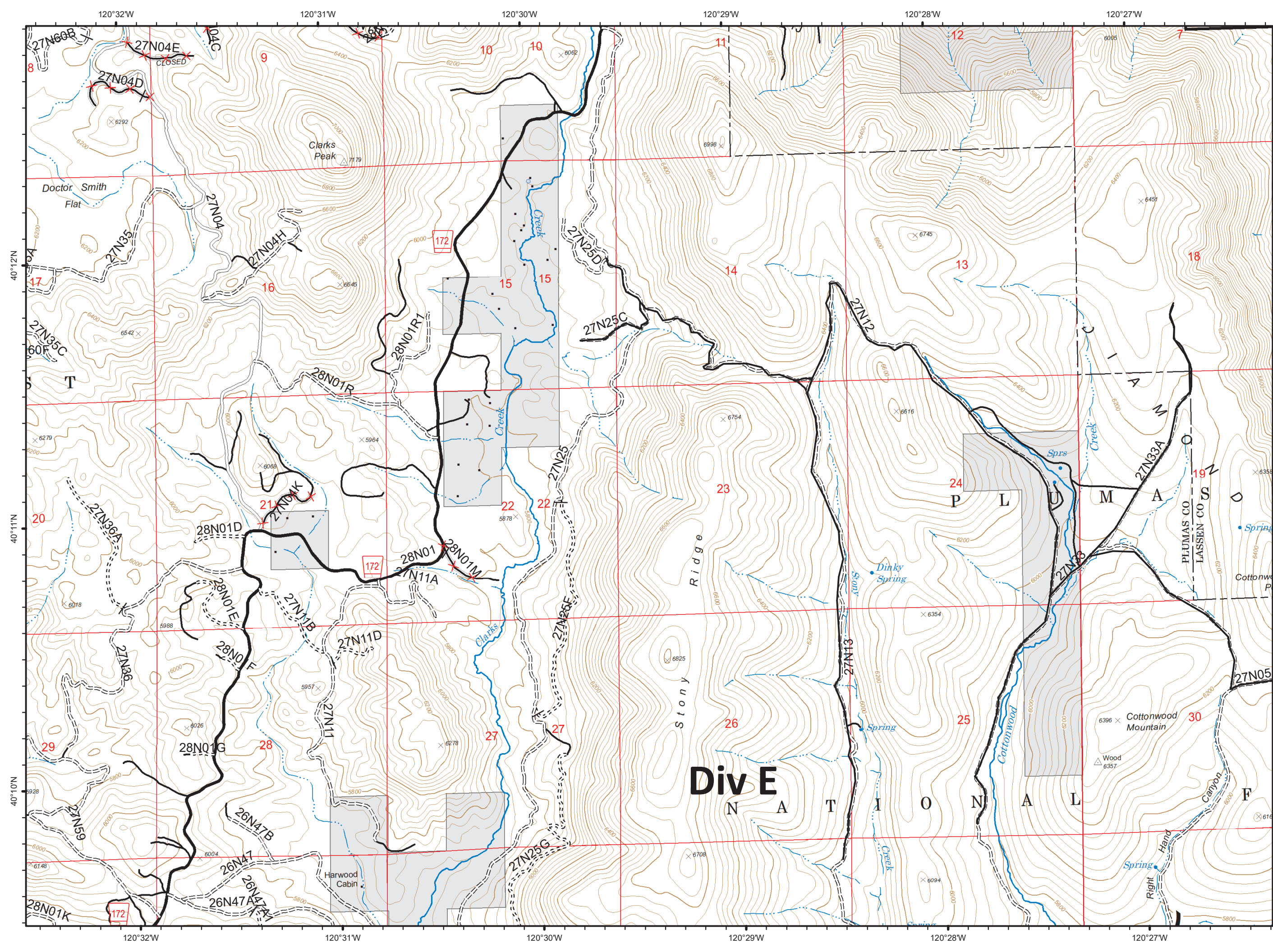
S Penny
9/8 0100
WGS84 Lat/Lon Grid



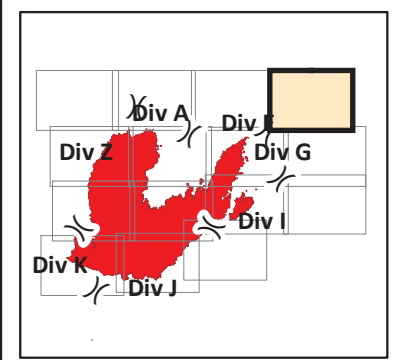
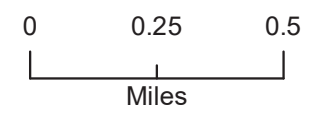


- ==== Basic Custodial Care (Closed)
- ==== High Clearance Roads
- Suitable for Passenger Cars
- High Degree of Comfort
- XX NFSR Decommissioned
- travelRoute
- National Forest
- Non-FS
- Milford Roads

S Penny
9/8 0100
WGS84 Lat/Lon Grid

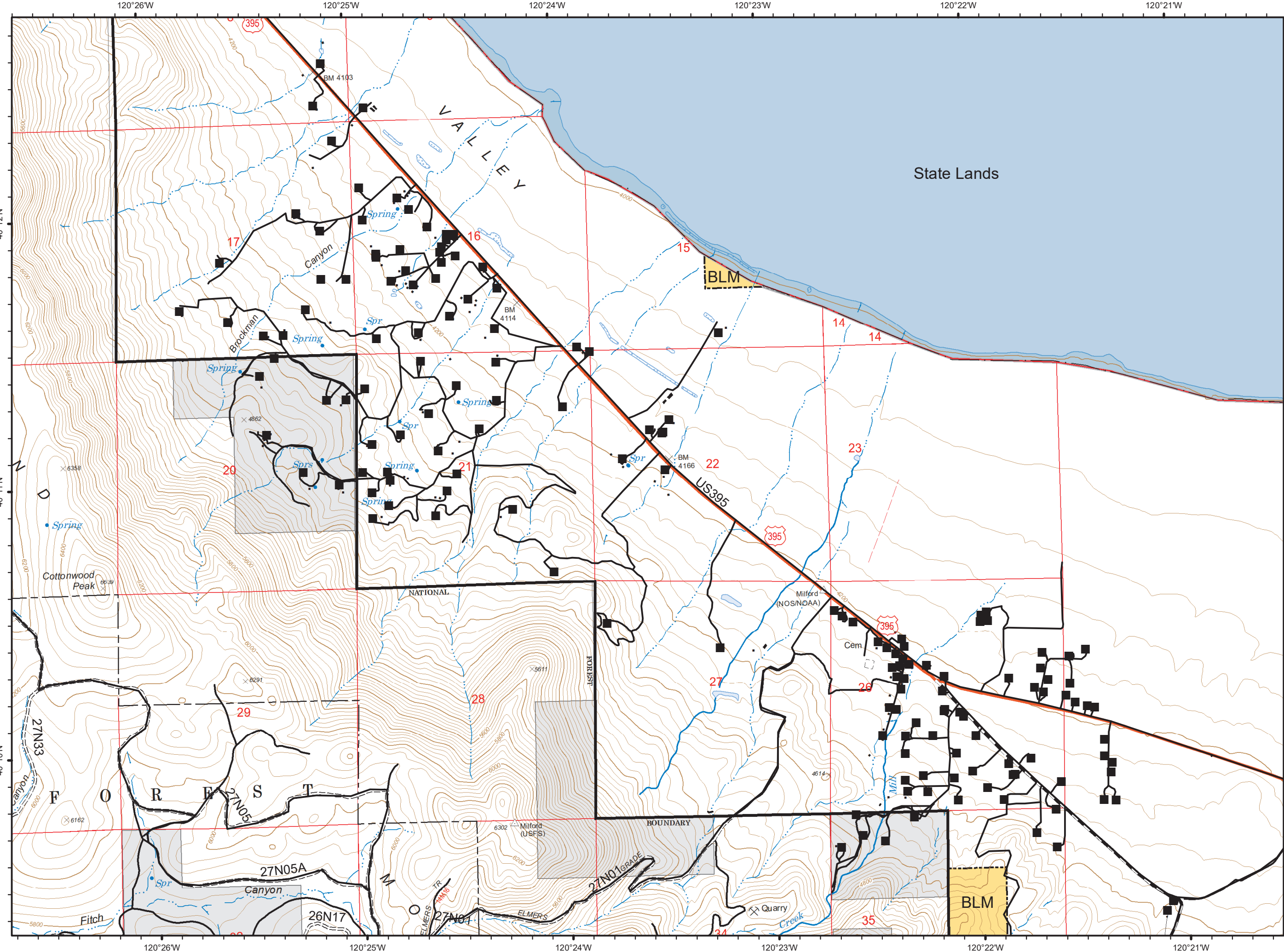


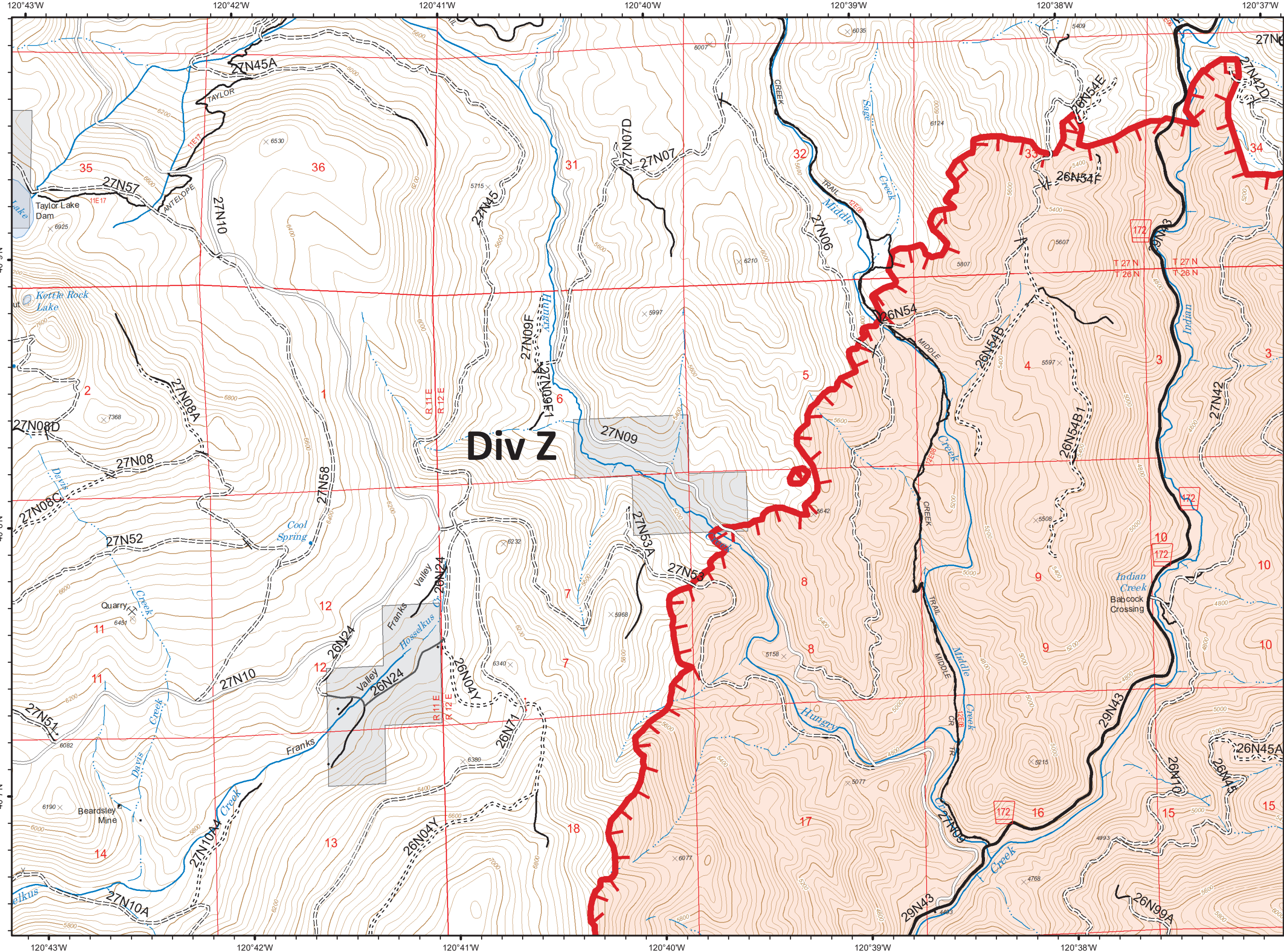
38,049 Acres
IR 9/7 1935 PDT



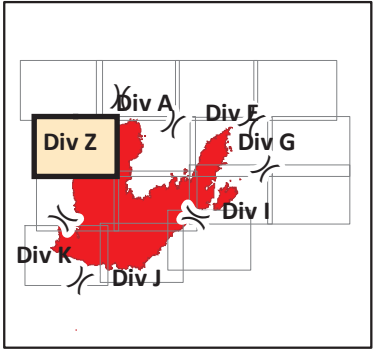
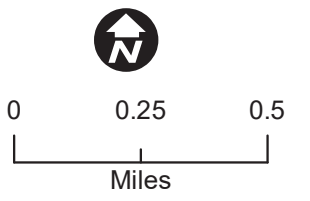
- C - COUNTY, PARISH, BOROUGH
- US - US HIGHWAY OR ROUTE
- === High Clearance Roads
- travelRoute
- BLM
- State Lands
- National Forest
- Non-FS
- Milford Habitable Structures
- Milford Roads

S Penny
9/8 0100
WGS84 Lat/Lon Grid





38,049 Acres
IR 9/7 1935 PDT

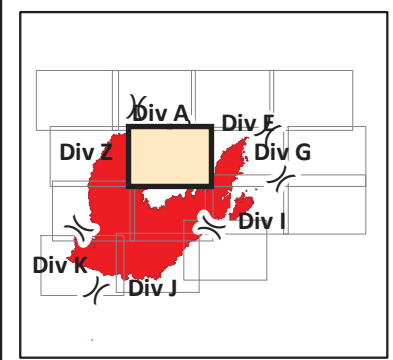
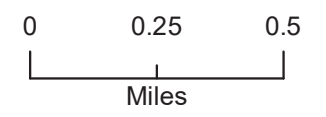


- Uncontrolled Fire Edge
- Wildfire Daily Fire Perimeter
- P - PRIVATE
- Basic Custodial Care (Closed)
- High Clearance Roads
- Suitable for Passenger Cars
- High Degree of Comfort
- travelRoute
- National Forest
- Non-FS

S Penny
9/8 0100
WGS84 Lat/Lon Grid

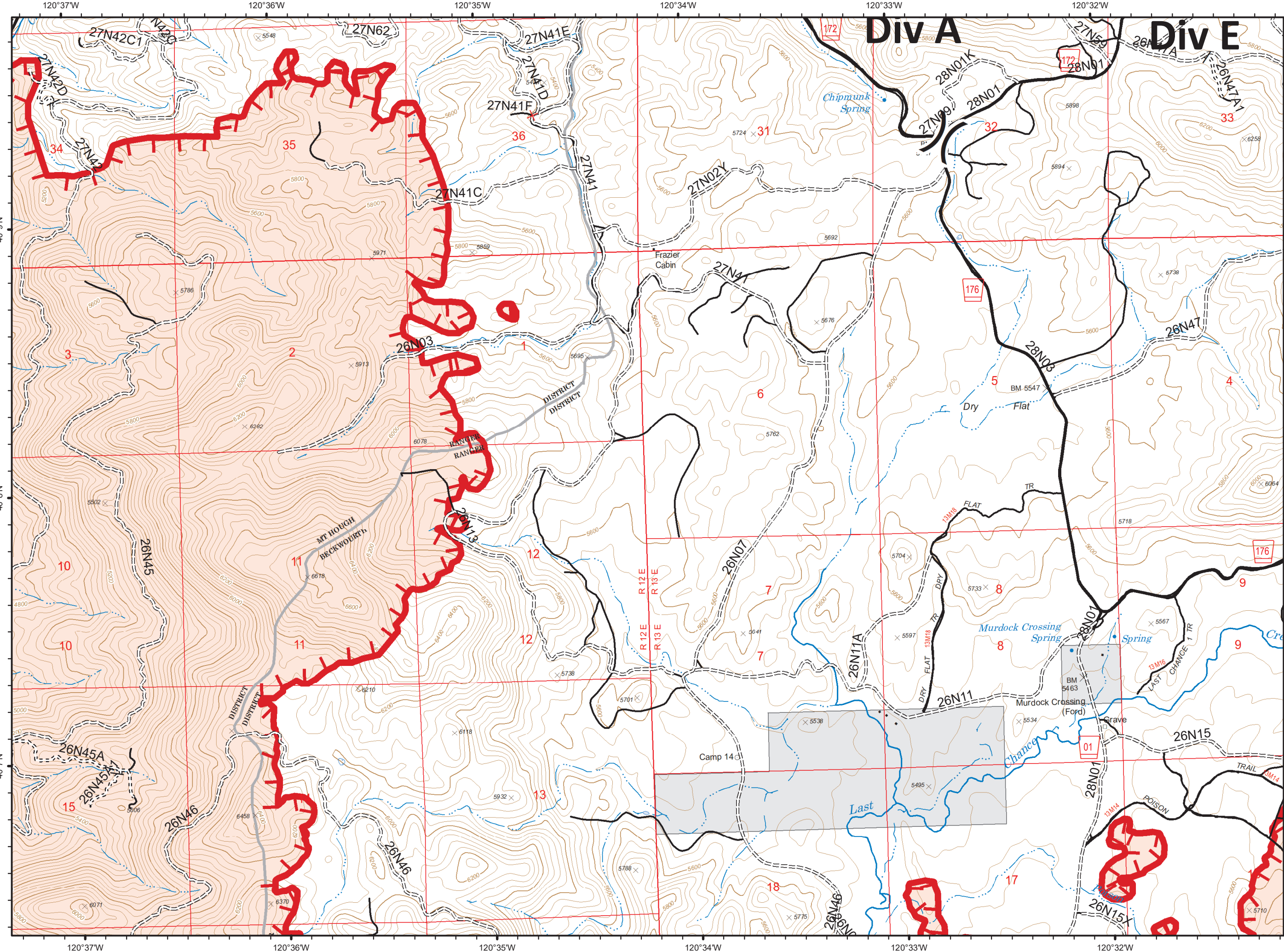


38,049 Acres
IR 9/7 1935 PDT

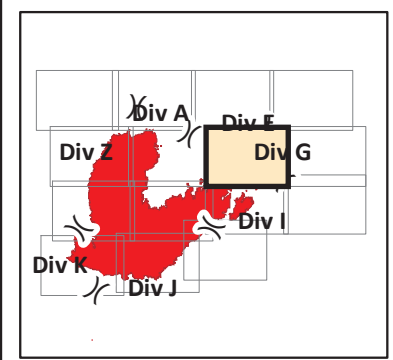
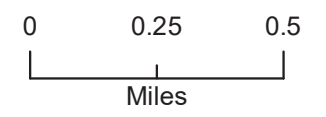


- Uncontrolled Fire Edge
- Wildfire Daily Fire Perimeter
- Basic Custodial Care (Closed)
- High Clearance Roads
- High Degree of Comfort
- Undetermined Decommissioned
- travelRoute
- National Forest
- Non-FS

S Penny
9/8 0100
WGS84 Lat/Lon Grid

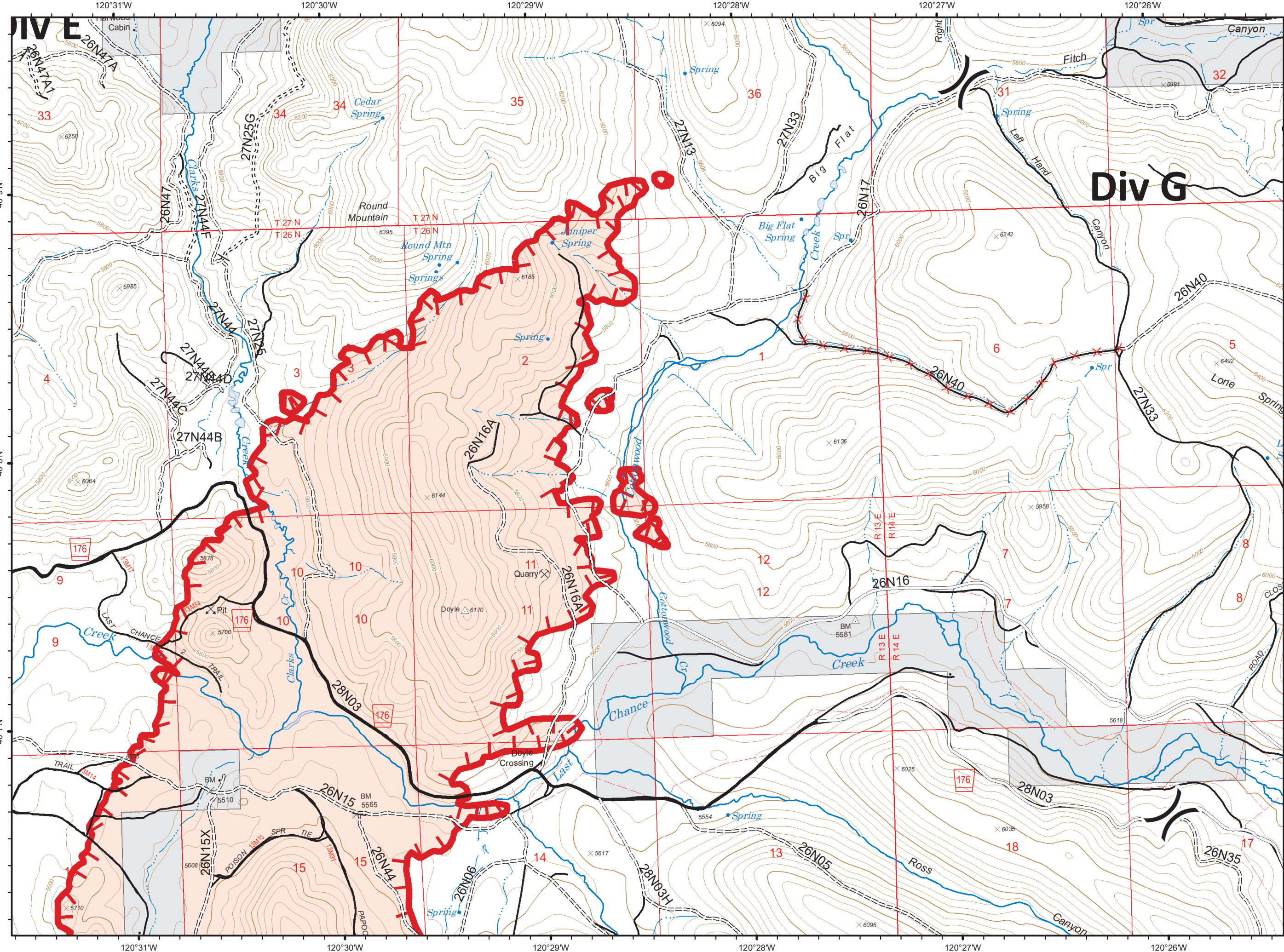


38,049 Acres
IR 9/7 1935 PDT

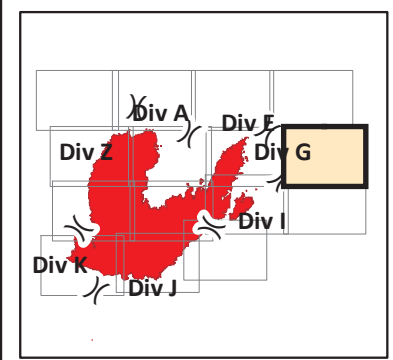
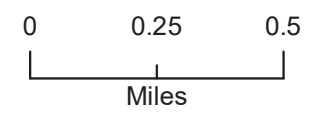


- Uncontrolled Fire Edge
- Wildfire Daily Fire Perimeter
- NOT - NOT NEEDED
- Basic Custodial Care (Closed)
- High Clearance Roads
- Suitable for Passenger Cars
- High Degree of Comfort
- NFSR Decommissioned
- travelRoute
- National Forest
- Non-FS
- Milford Roads

S Penny
9/8 0100
WGS84 Lat/Lon Grid

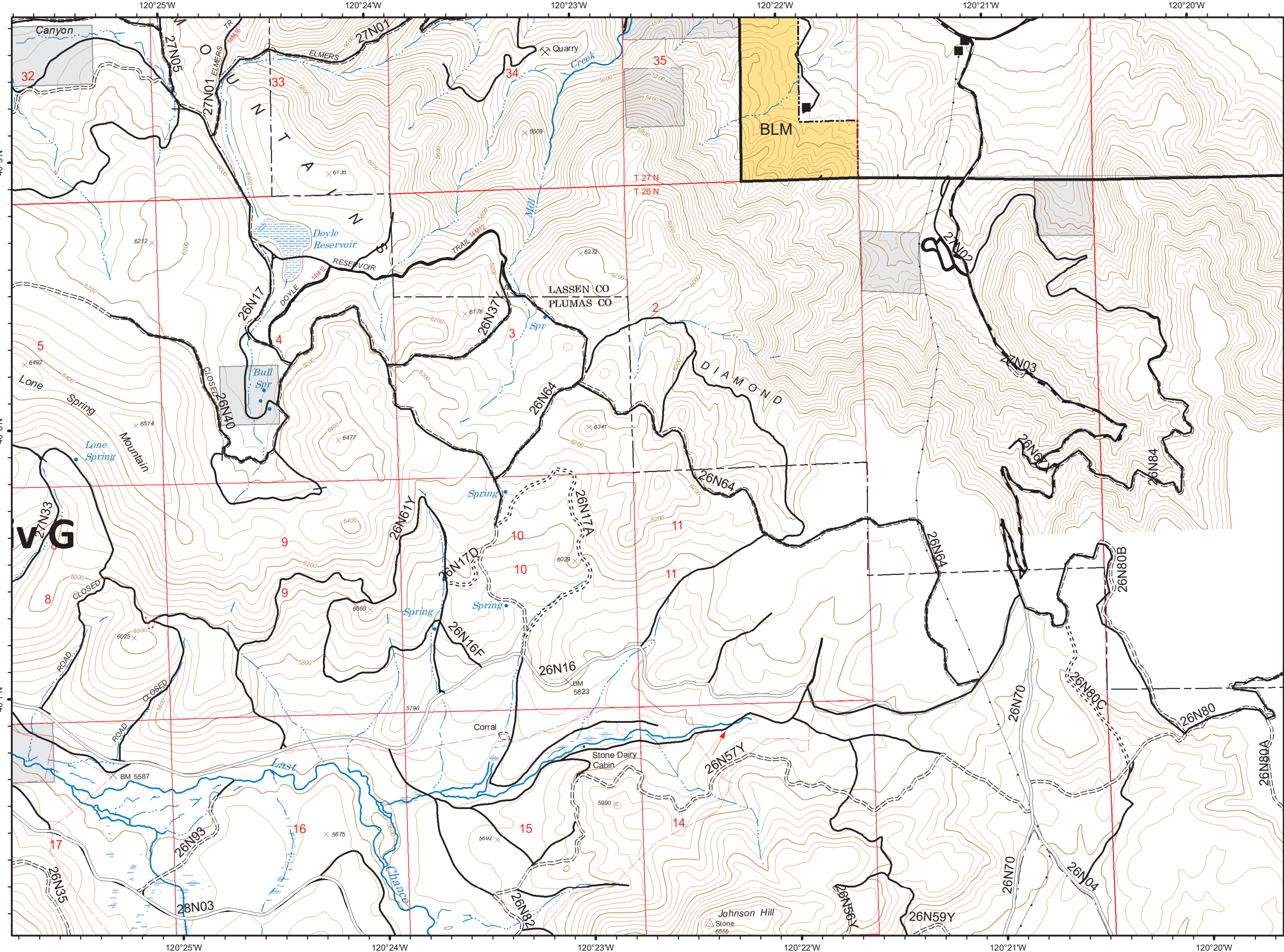


38,049 Acres
IR 9/7 1935 PDT

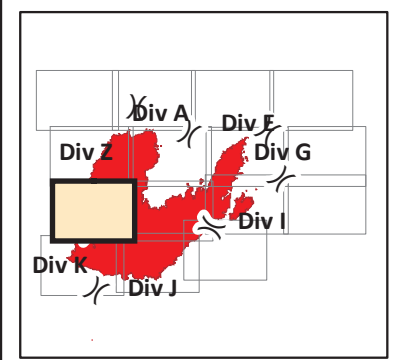
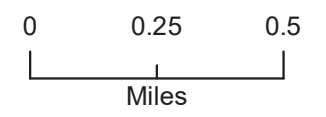


- C - COUNTY, PARISH, BOROUGH
- NOT - NOT NEEDED
- Basic Custodial Care (Closed)
- ==== High Clearance Roads
- ==== Suitable for Passenger Cars
- High Degree of Comfort
- travelRoute
- BLM
- National Forest
- Non-FS
- Milford Habitable Structures
- Milford Roads

S Penny
9/8 0100
WGS84 Lat/Lon Grid



38,049 Acres
IR 9/7 1935 PDT

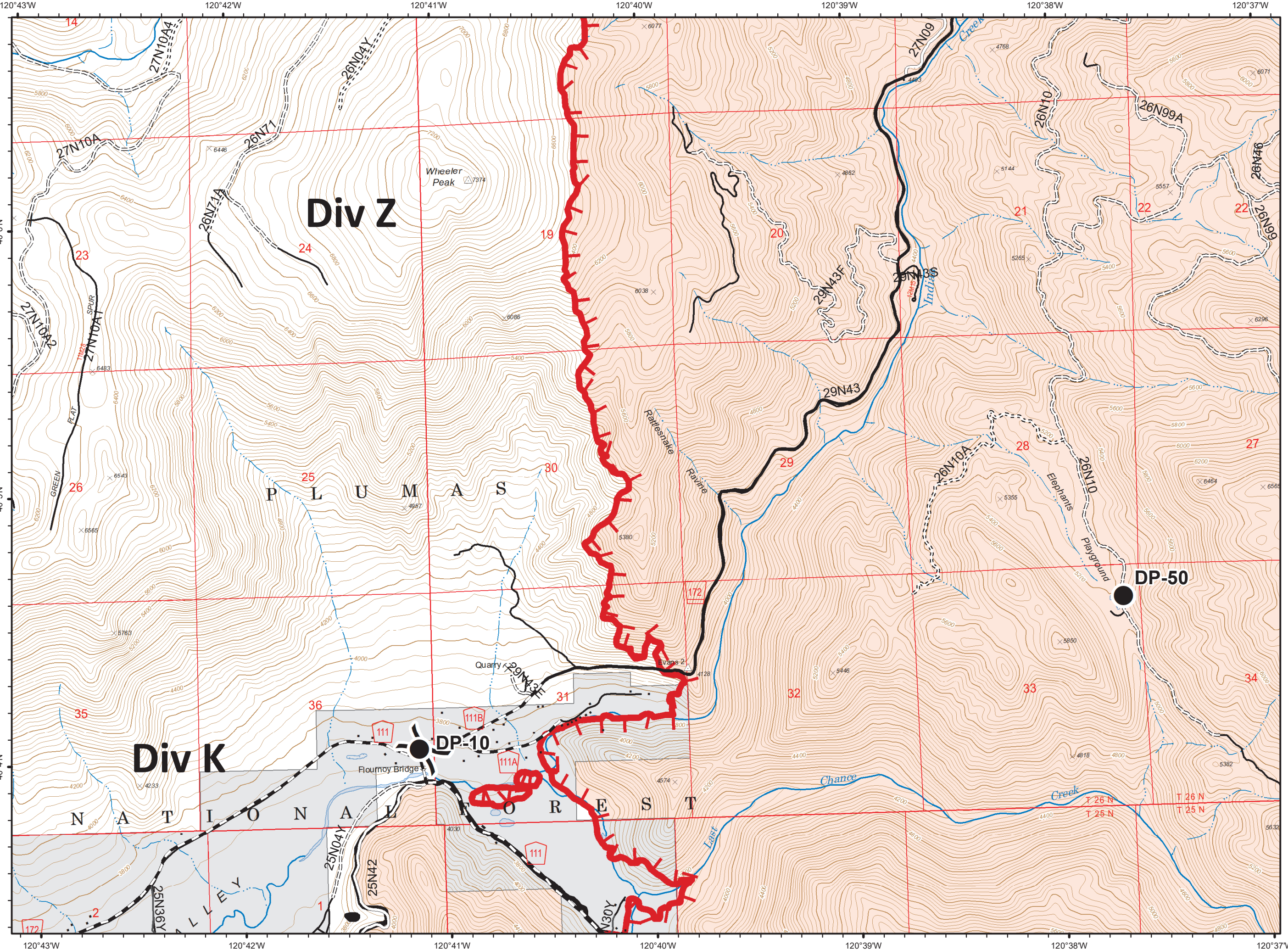


● Drop Point

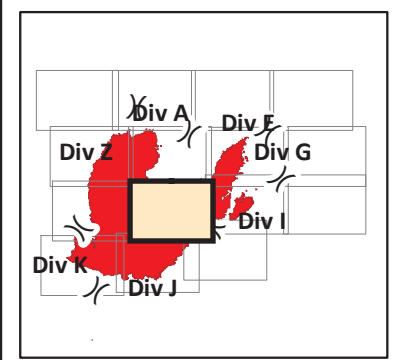
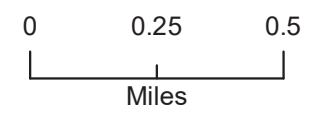
() Division Break

- Uncontrolled Fire Edge
- Completed Line
- Wildfire Daily Fire Perimeter
- C - COUNTY, PARISH, BOROUGH
- NOT - NOT NEEDED
- P - PRIVATE
- Basic Custodial Care (Closed)
- High Clearance Roads
- Suitable for Passenger Cars
- High Degree of Comfort
- travelRoute
- National Forest
- Non-FS

S Penny
9/8 0100
WGS84 Lat/Lon Grid



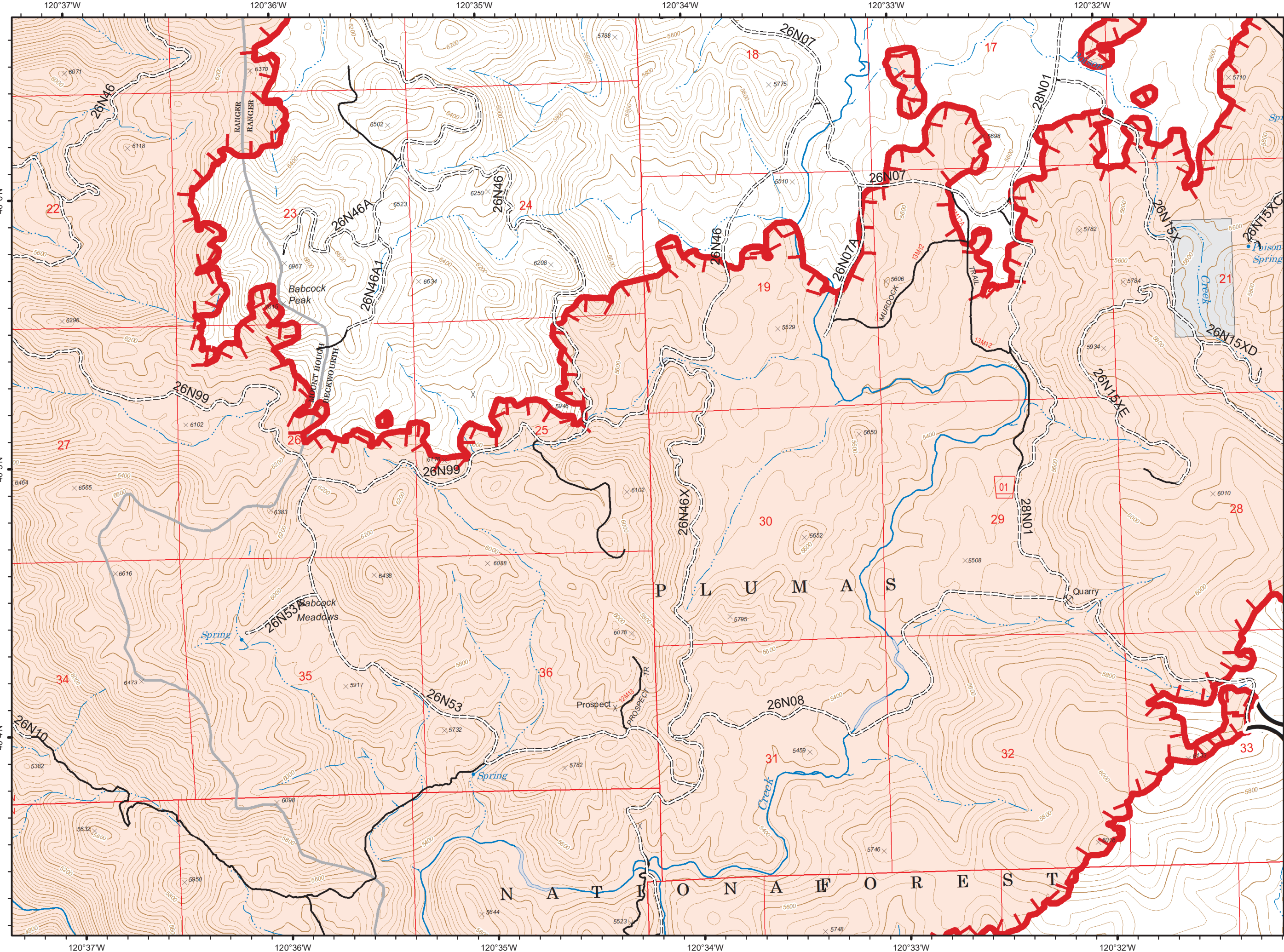
38,049 Acres
IR 9/7 1935 PDT



() Division Break

- Uncontrolled Fire Edge
- Wildfire Daily Fire Perimeter
- High Clearance Roads
- travelRoute
- National Forest
- Non-FS

S Penny
9/8 0100
WGS84 Lat/Lon Grid



120°25'W

120°24'W

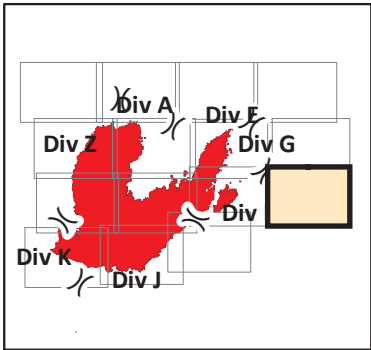
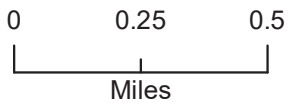
120°23'W

120°22'W

120°21'W

120°20'W

38,049 Acres
 IR 9/7 1935 PDT



- NOT - NOT NEEDED
- ==== Basic Custodial Care (Closed)
- ==== High Clearance Roads
- Suitable for Passenger Cars
- High Degree of Comfort
- travelRoute
- National Forest
- Non-FS

S Penny
 9/8 0100
 WGS84 Lat/Lon Grid



Div I

40°6'N

40°5'N

40°4'N

120°25'W

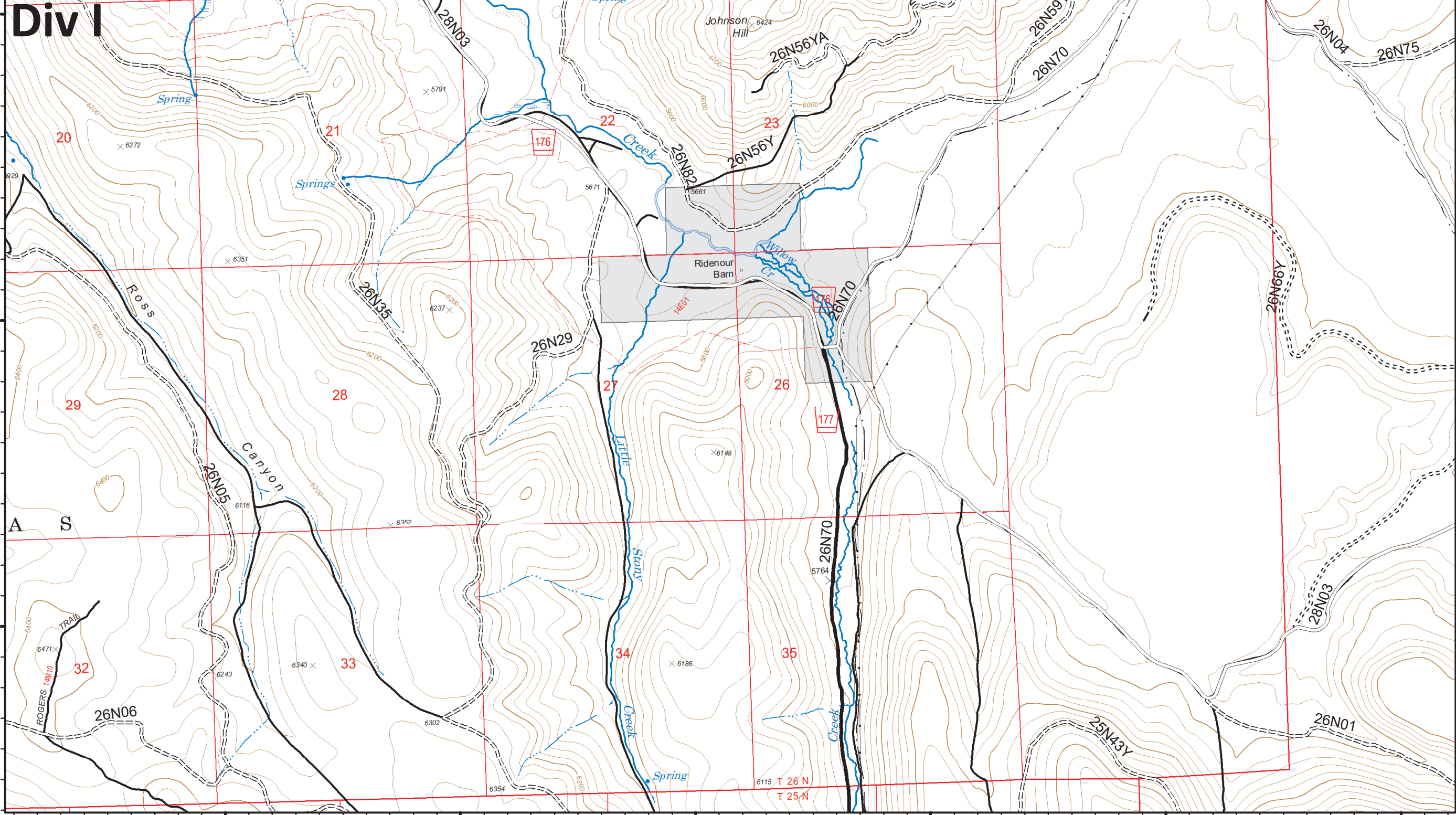
120°24'W

120°23'W

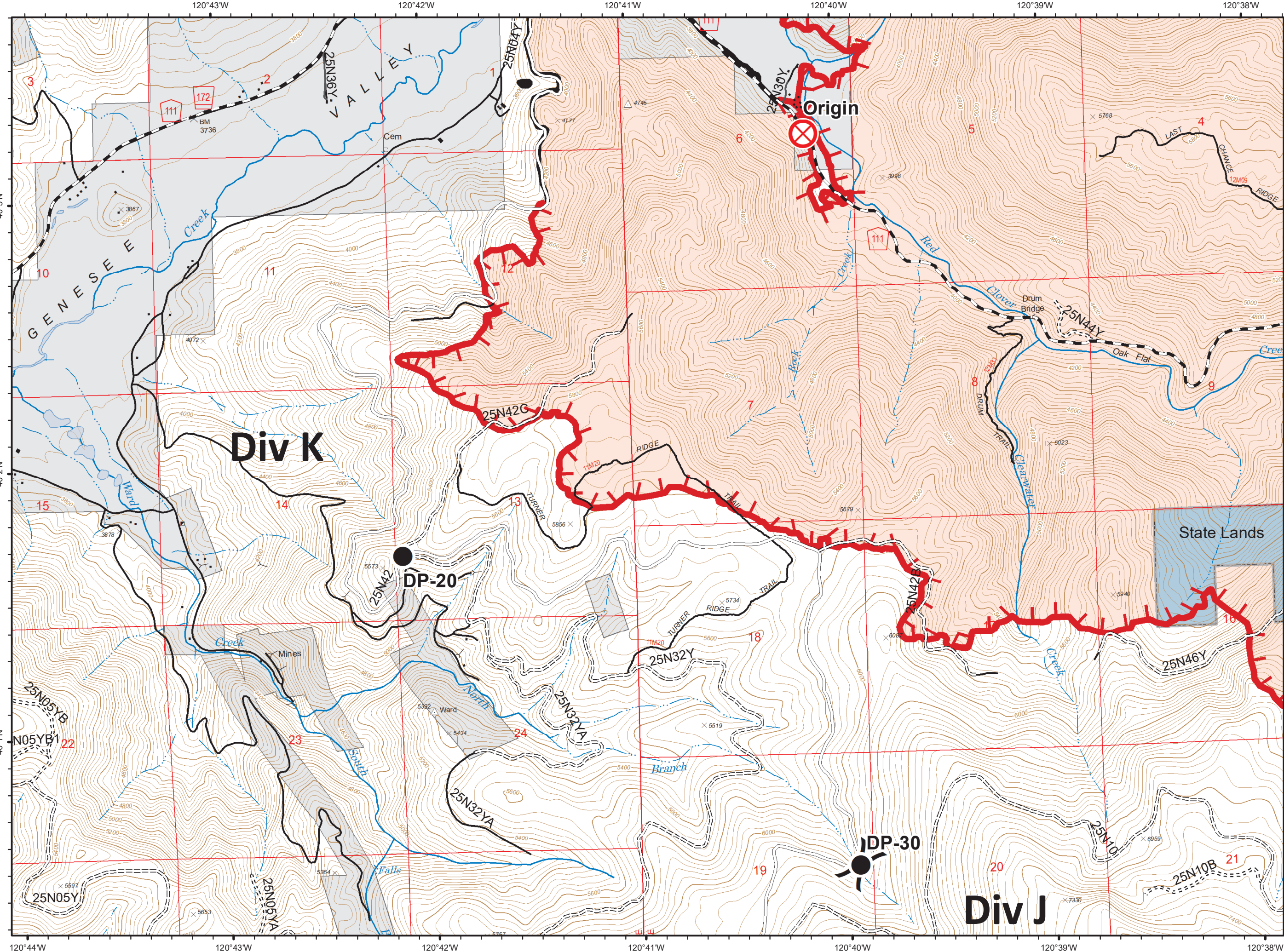
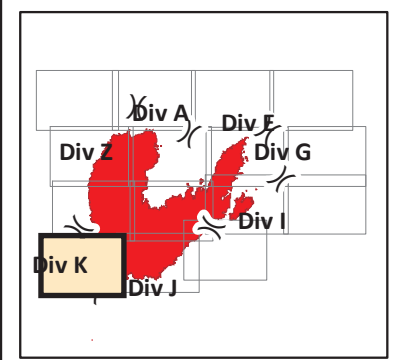
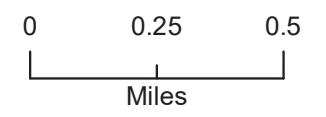
120°22'W

120°21'W

120°20'W



38,049 Acres
IR 9/7 1935 PDT

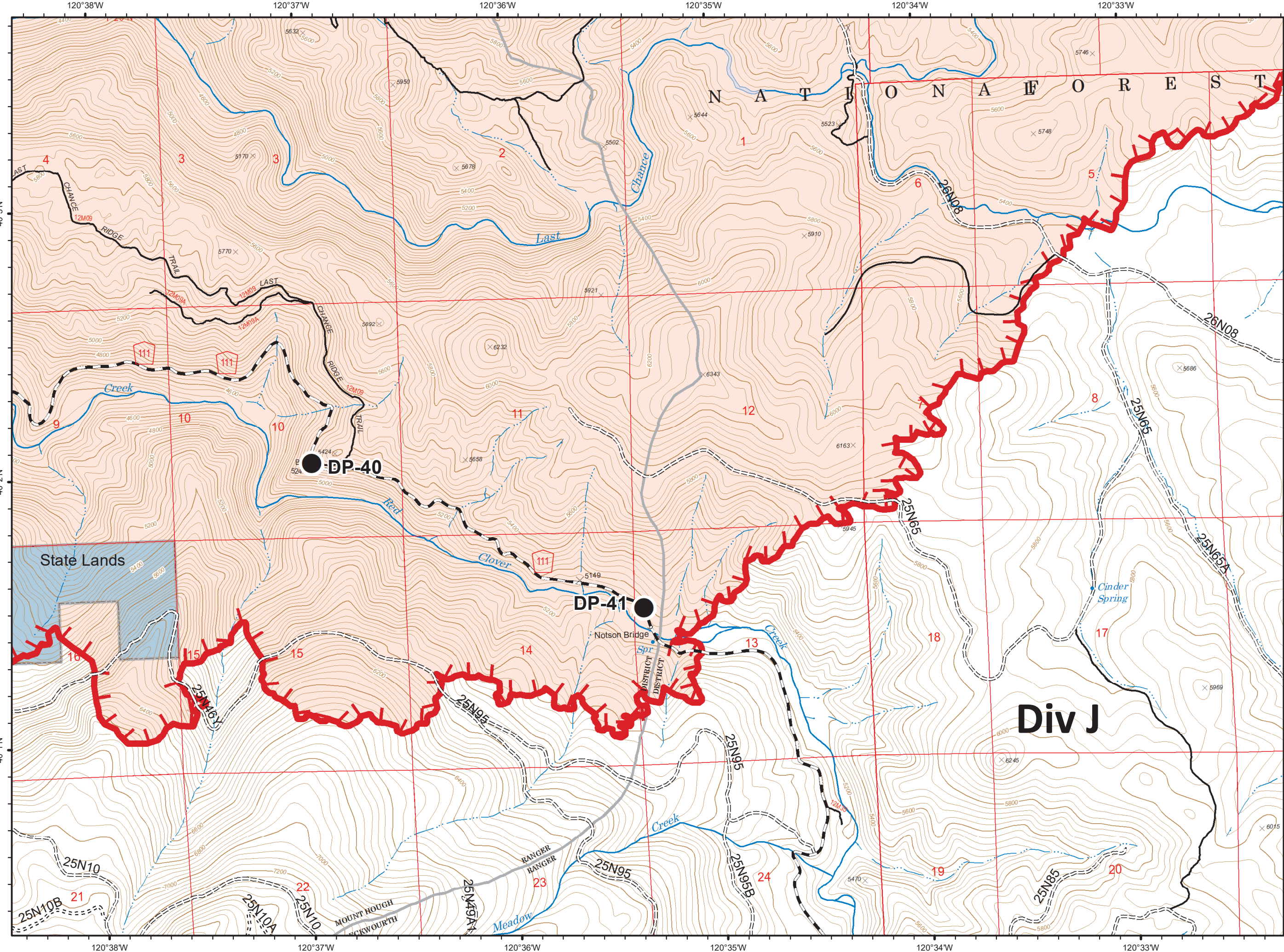
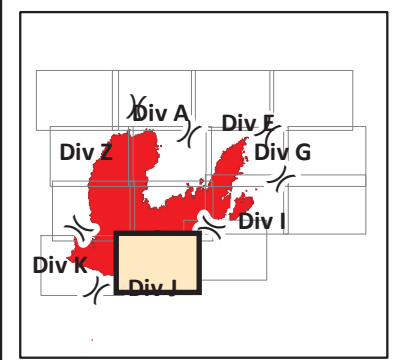
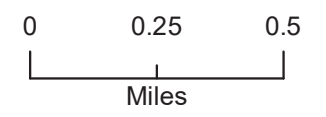


- Drop Point
- ⊗ Fire Origin
- ⎓ Division Break
- ▬ Uncontrolled Fire Edge
- ▬ Completed Line
- ▬ Wildfire Daily Fire Perimeter
- ▬ C - COUNTY, PARISH, BOROUGH
- ▬ NOT - NOT NEEDED
- ▬ P - PRIVATE
- ▬ Basic Custodial Care (Closed)
- ▬ High Clearance Roads
- ▬ Suitable for Passenger Cars
- ▬ travelRoute
- ▬ State Lands
- ▬ National Forest
- ▬ Non-FS

S Penny
9/8 0100
WGS84 Lat/Lon Grid



38,049 Acres
IR 9/7 1935 PDT



- Drop Point
- ▬ Uncontrolled Fire Edge
- ▭ Wildfire Daily Fire Perimeter
- ▬ C - COUNTY, PARISH, BOROUGH
- ▬ Basic Custodial Care (Closed)
- ▬ High Clearance Roads
- ▬ travelRoute
- ▭ State Lands
- ▭ National Forest
- ▭ Non-FS

Div J

S Penny
9/8 0100
WGS84 Lat/Lon Grid



