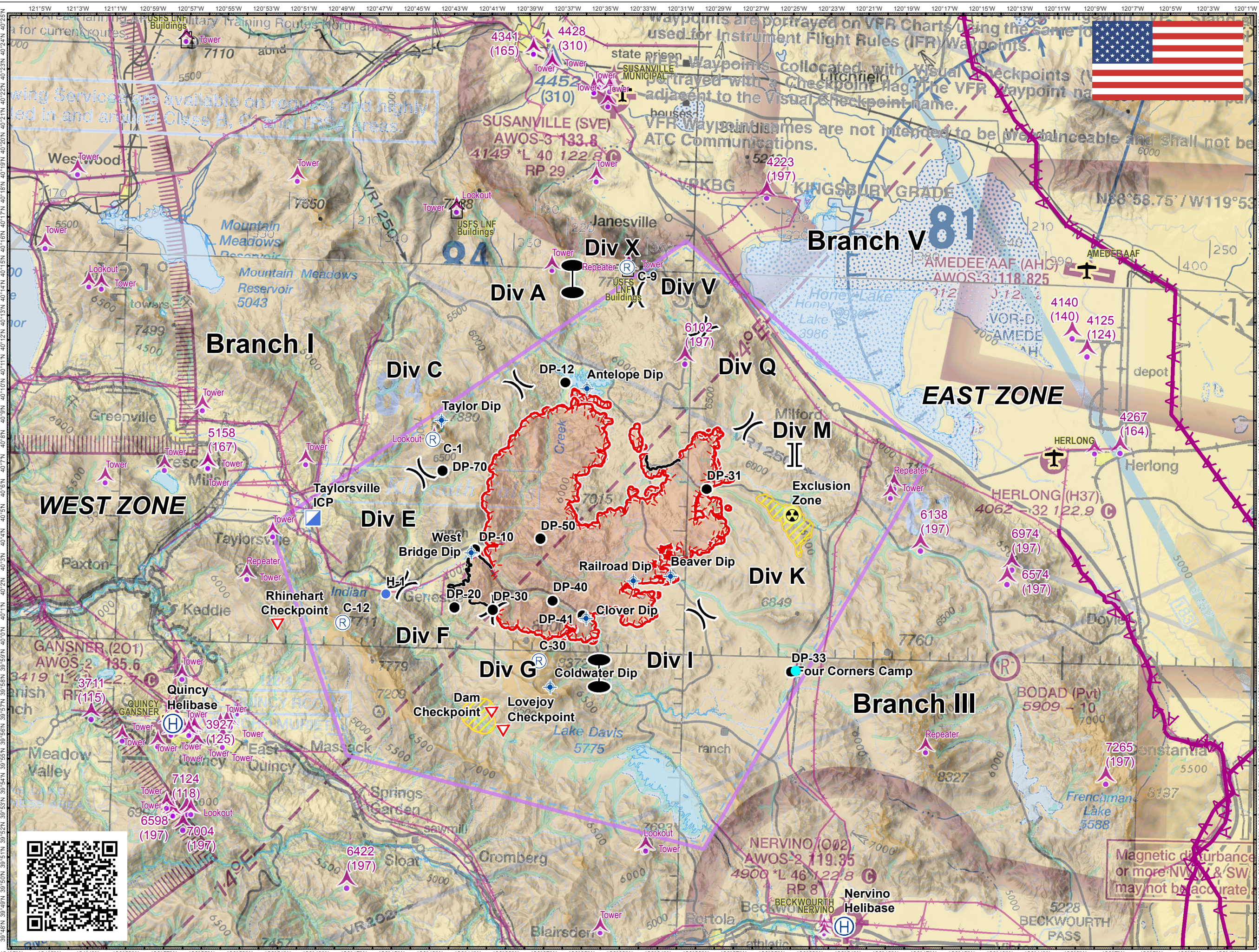
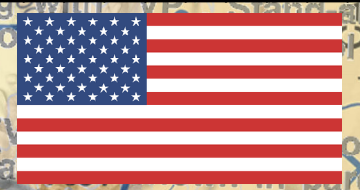


**Walker Fire**  
CA-PNF-001324  
**AirOps Pilot Map**  
September 11, 2019



Name	Latitude	Longitude
Antelope Dip	40° 10.688' N	120° 35.450' W
Beaver Dip	40° 3.160' N	120° 30.7910' W
Clover Dip	40° 1.360' N	120° 35.181' W
Coldwater Dip	39° 58.536' N	120° 36.986' W
Railroad Dip	40° 2.940' N	120° 32.741' W
Taylor Dip	40° 9.244' N	120° 43.095' W
West Bridge Dip	40° 3.902' N	120° 41.341' W

Name	Latitude	Longitude
Exclusion Zone	40° 5.751' N	120° 24.433' W

Name	Latitude	Longitude
Nervion Helibase	39° 49.116' N	120° 21.183' W
Quincy Helibase	39° 56.627' N	120° 56.822' W

Name	Latitude	Longitude
H-1	40° 2.147' N	120° 45.786' W

Name	Latitude	Longitude
Taylorville ICP	40° 5.145' N	120° 49.746' W

Name	Latitude	Longitude
C-1	40° 8.458' N	120° 43.531' W
C-9	40° 15.665' N	120° 33.488' W
C-12	40° 0.923' N	120° 48.015' W
C-30	39° 59.600' N	120° 37.606' W

Name	Latitude	Longitude
Dam Checkpoint	39° 57.410' N	120° 40.051' W
Lovejoy Checkpoint	39° 56.672' N	120° 39.417' W
Rhinehart Checkpoint	40° 0.743' N	120° 51.464' W
Four Corners Camp	39° 59.440' N	120° 24.055' W

- Powerline
- Telephone wires
- Power Transmission Line
- Tower
- Airport
- Congested area
- Fire Retardant Avoidance
- TFR
- Completed Line
- Uncontrolled Fire Edge
- ICP
- Zone Break
- Branch Break
- Division Break
- Drop Point
- Helibase
- Dip Site
- Helispot
- Aviation Checkpoint
- Hazard
- Repeater

Magnetic disturbance or more NW & SW may not be accurate

0 0.5 1 2 3 1:265,000  
Miles

Projection: NAD83 UTM Zone10  
Lat-Long Grid Ticks: 1' minute interval

author: DCR date: 20190911 0058 hr  
file: airops\_pilot\_11x17\_tand\_2019\_Walker\_CAPNF001324\_1.mxd

Walker Fire  
AirOps Pilot Map  
September 10, 2019

