

IAP Tile Index

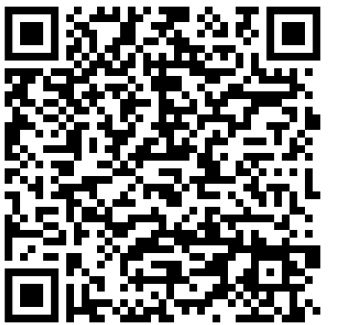
Walker Fire

CA-PNF-001324

September 21, 2019



- Camp
- Dip Site
- Drop Point
- Hazard
- Helispot
- Incident Command Post
- Repeater
- Retardant/Mud Pit
- Water Source
- Other
- Zone Break
- Division Break
- Wildfire Daily Fire Perimeter



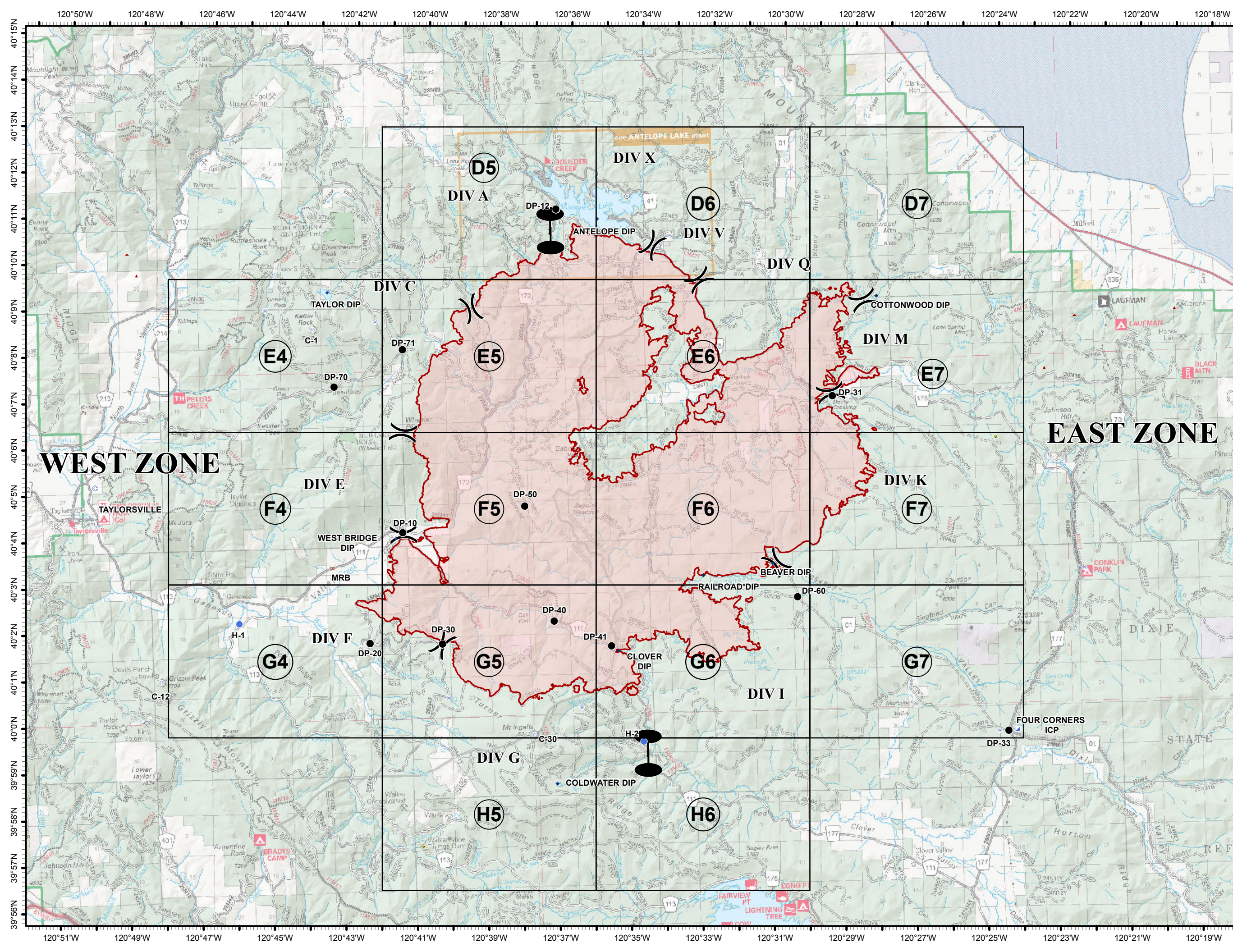
Mobile Maps



NORTH

0 0.5 1 2

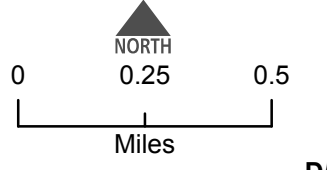
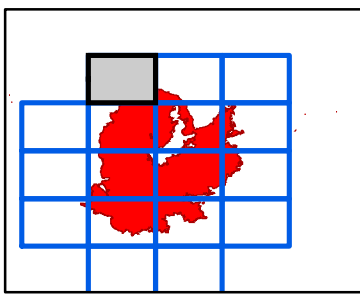
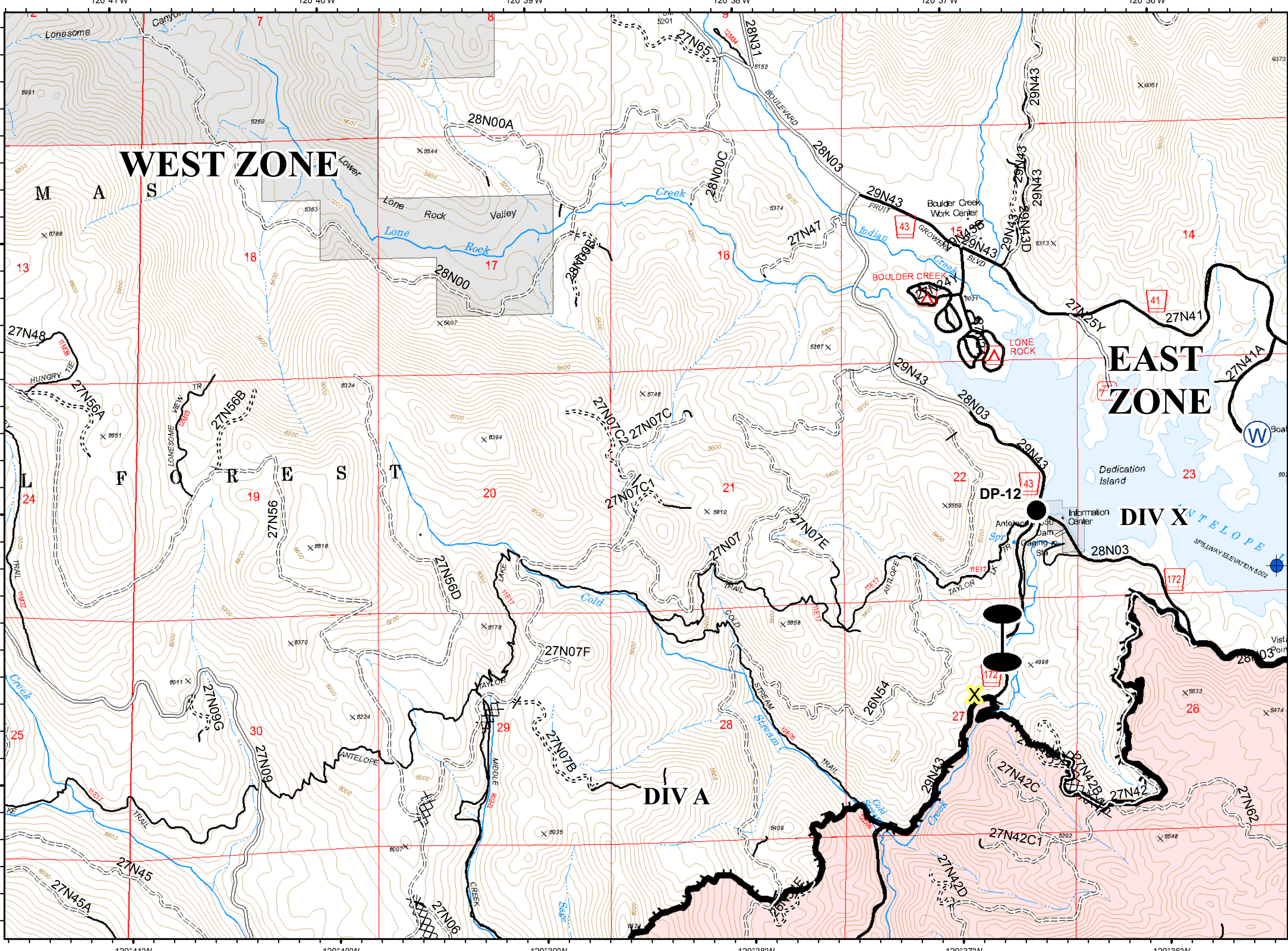
Miles



D5



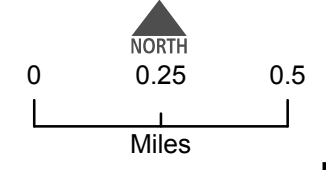
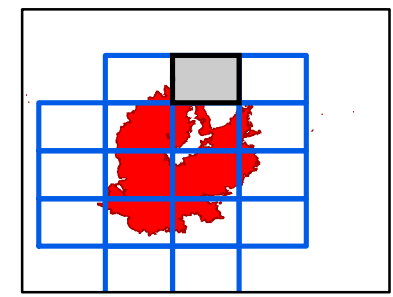
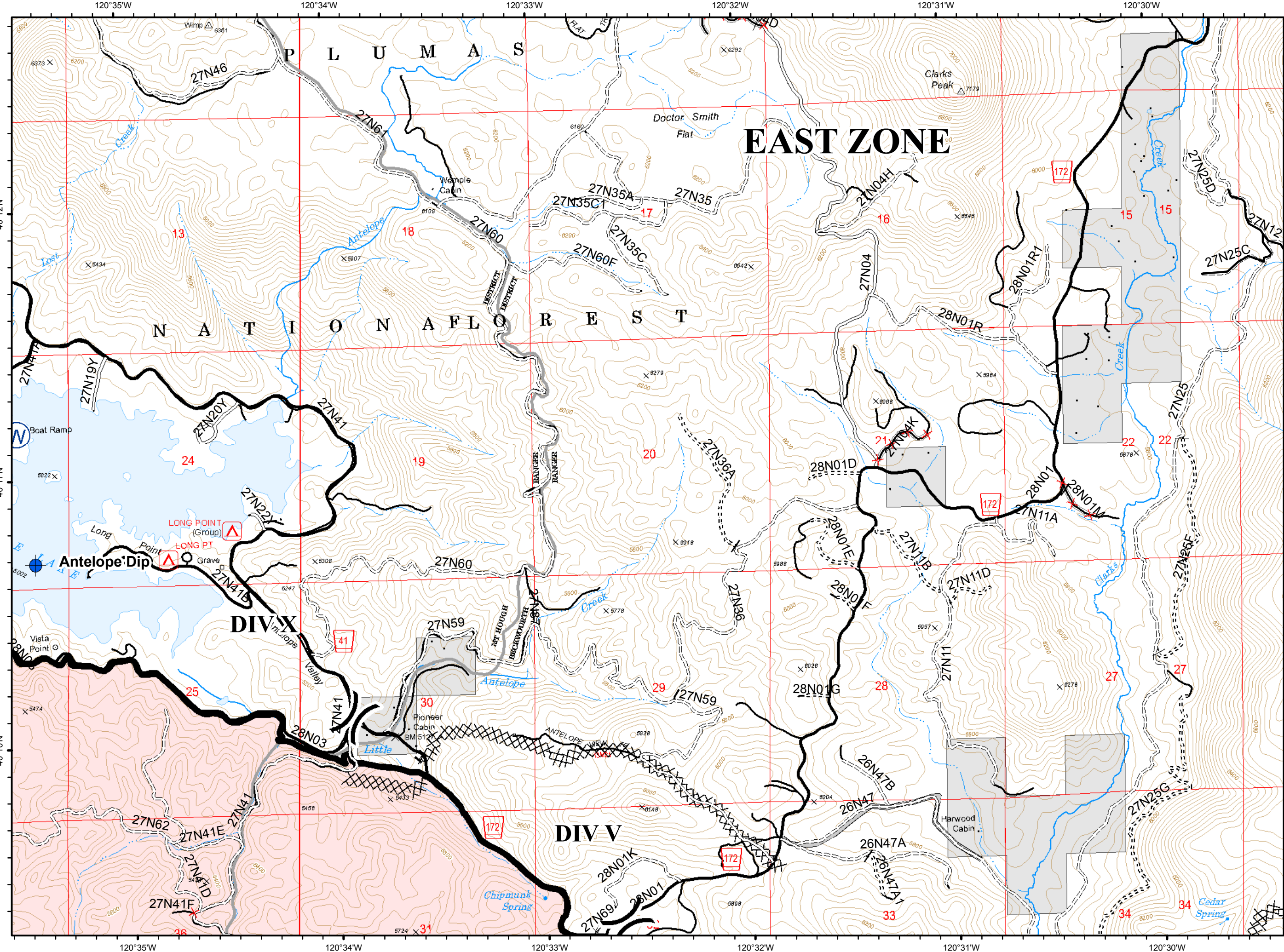
- Dip Site
- Drop Point
- Water Source
- Zone Break
- Completed Line
- Completed Dozer Line
- Completed Hand Line
- Road as Completed Line
- Basic Custodial Care (Closed)
- High Clearance Roads
- Suitable for Passenger Cars
- High Degree of Comfort
- travelRoute
- Known Mine Hazards



D6



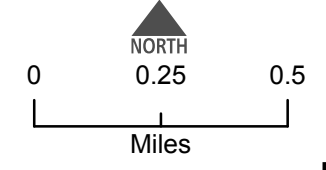
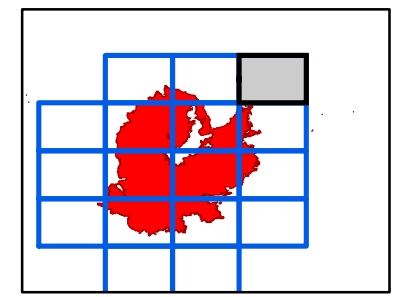
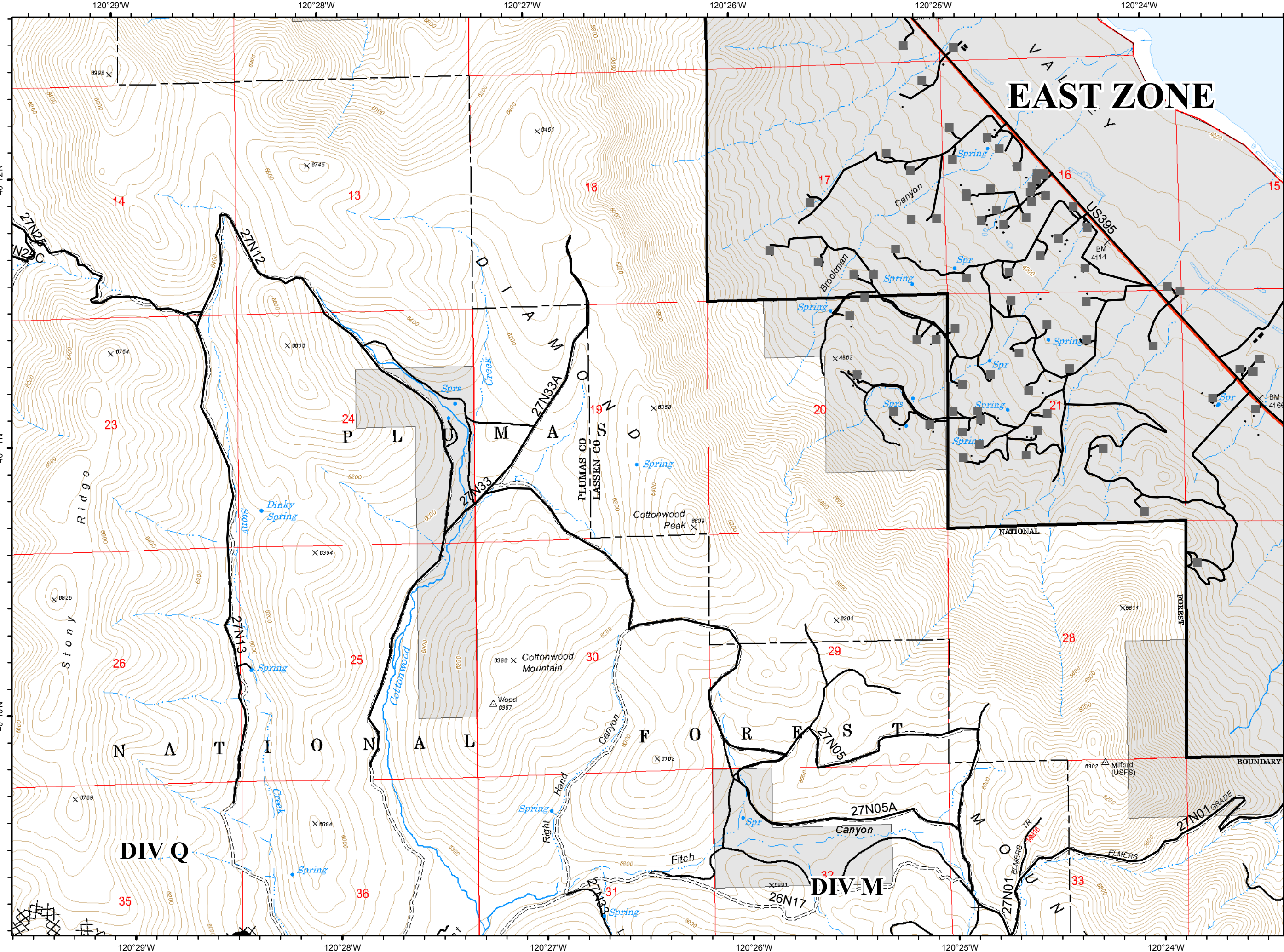
- Dip Site
- Water Source
- Division Break
- Completed Line
- Completed Dozer Line
- Completed Hand Line
- Access or Improved Road
- Milford Roads
- Basic Custodial Care (Closed)
- High Clearance Roads
- Suitable for Passenger Cars
- High Degree of Comfort
- NFSR Decommissioned
- Undetermined Decommissioned
- travelRoute



D7



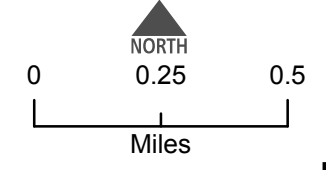
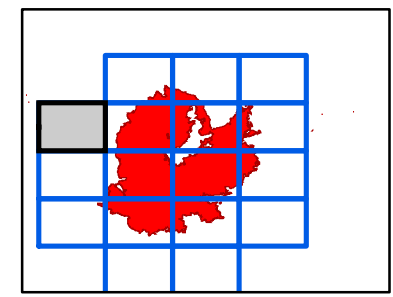
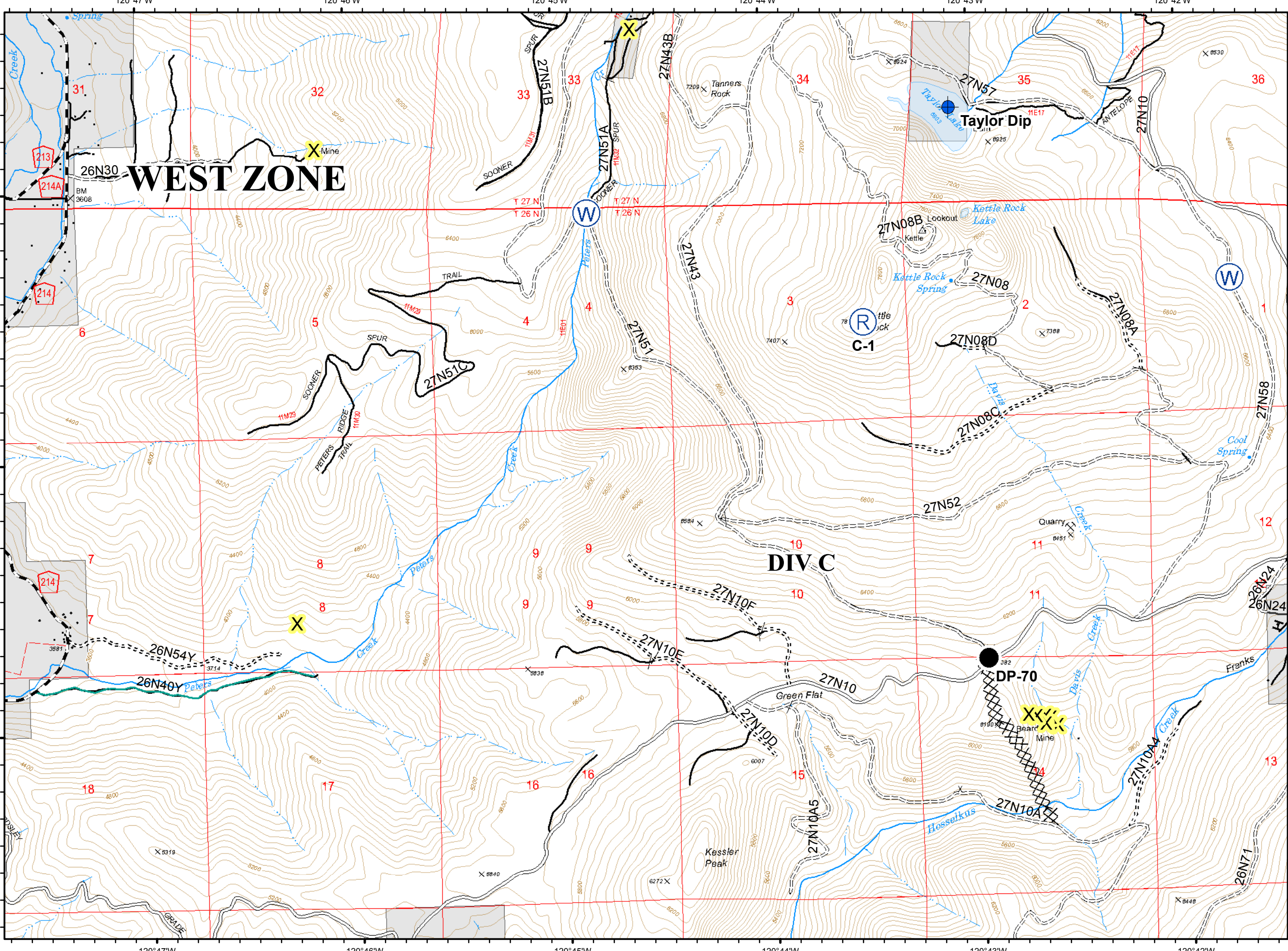
- Completed Line
- Completed Dozer Line
- Milford Roads
- NOT - NOT NEEDED
- US - US HIGHWAY OR ROUTE
- High Clearance Roads
- travelRoute
- Milford Habitable Structures



E4









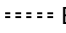
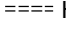





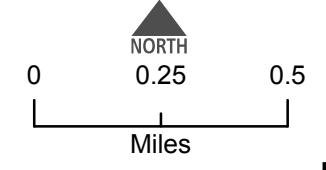
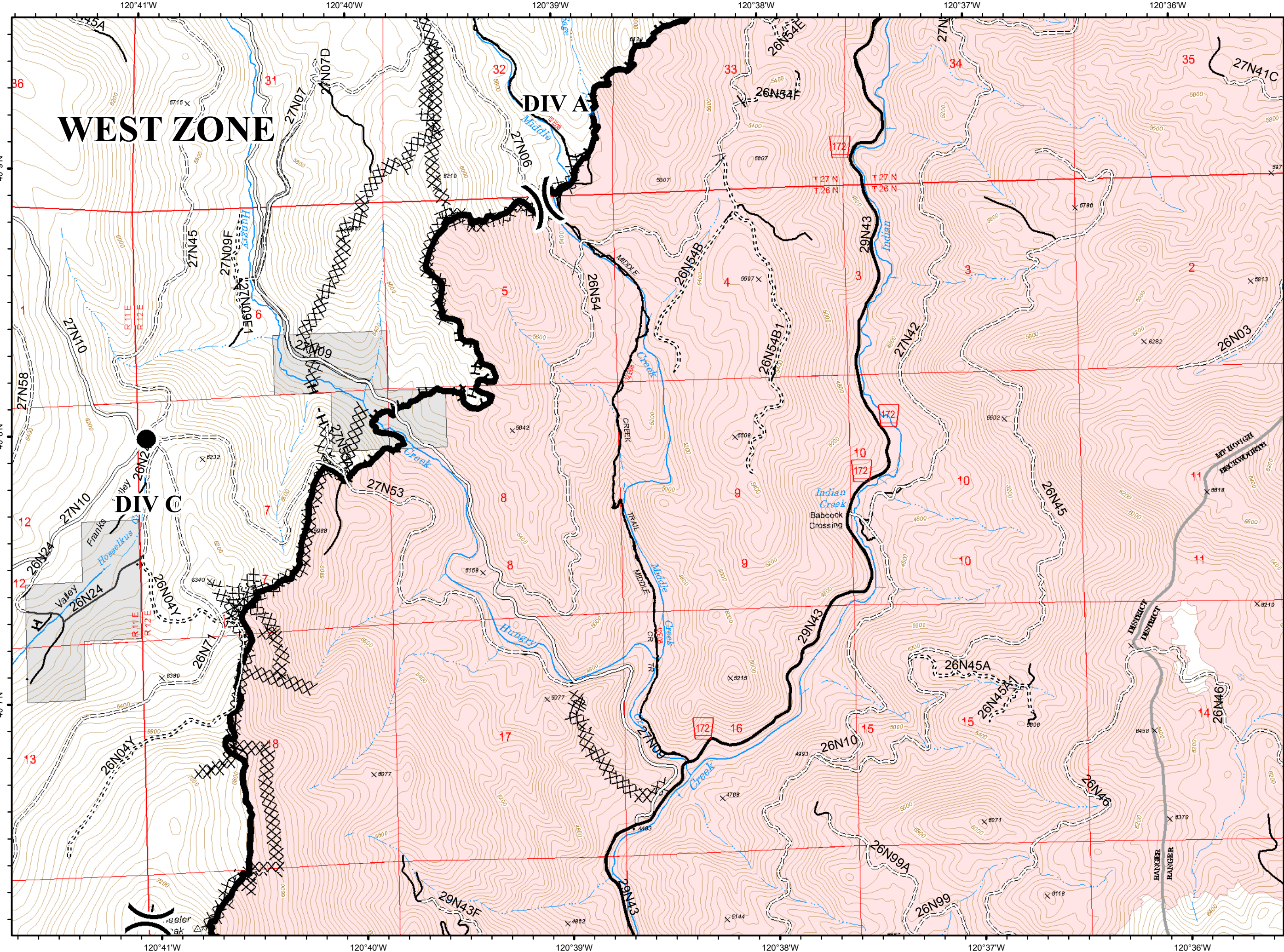
- Dip Site
- Drop Point
- Repeater
- Water Source
- Completed Dozer Line
- Completed Hand Line
- C - COUNTY, PARISH, BOROUGH
- NOT - NOT NEEDED
- P - PRIVATE
- <all other values>
- Basic Custodial Care (Closed)
- High Clearance Roads
- Suitable for Passenger Cars
- travelRoute
- Known Mine Hazards
- Abandoned Mine



E5



-  Drop Point
-  Division Break
-  Completed Line
-  Completed Dozer Line
-  Completed Hand Line
-  Access or Improved Road
-  Proposed Dozer Line
-  P - PRIVATE
-  Basic Custodial Care (Closed)
-  High Clearance Roads
-  Suitable for Passenger Cars
-  High Degree of Comfort
-  travelRoute



E6



() Division Break

— Completed Line

XXXX Completed Dozer Line

H - Completed Hand Line

⊕ Other

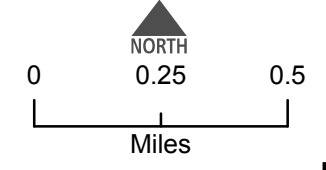
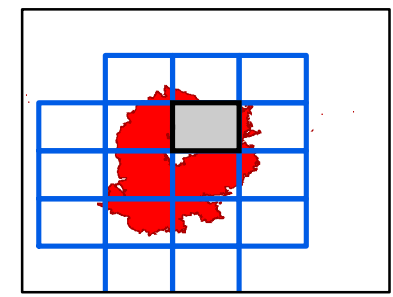
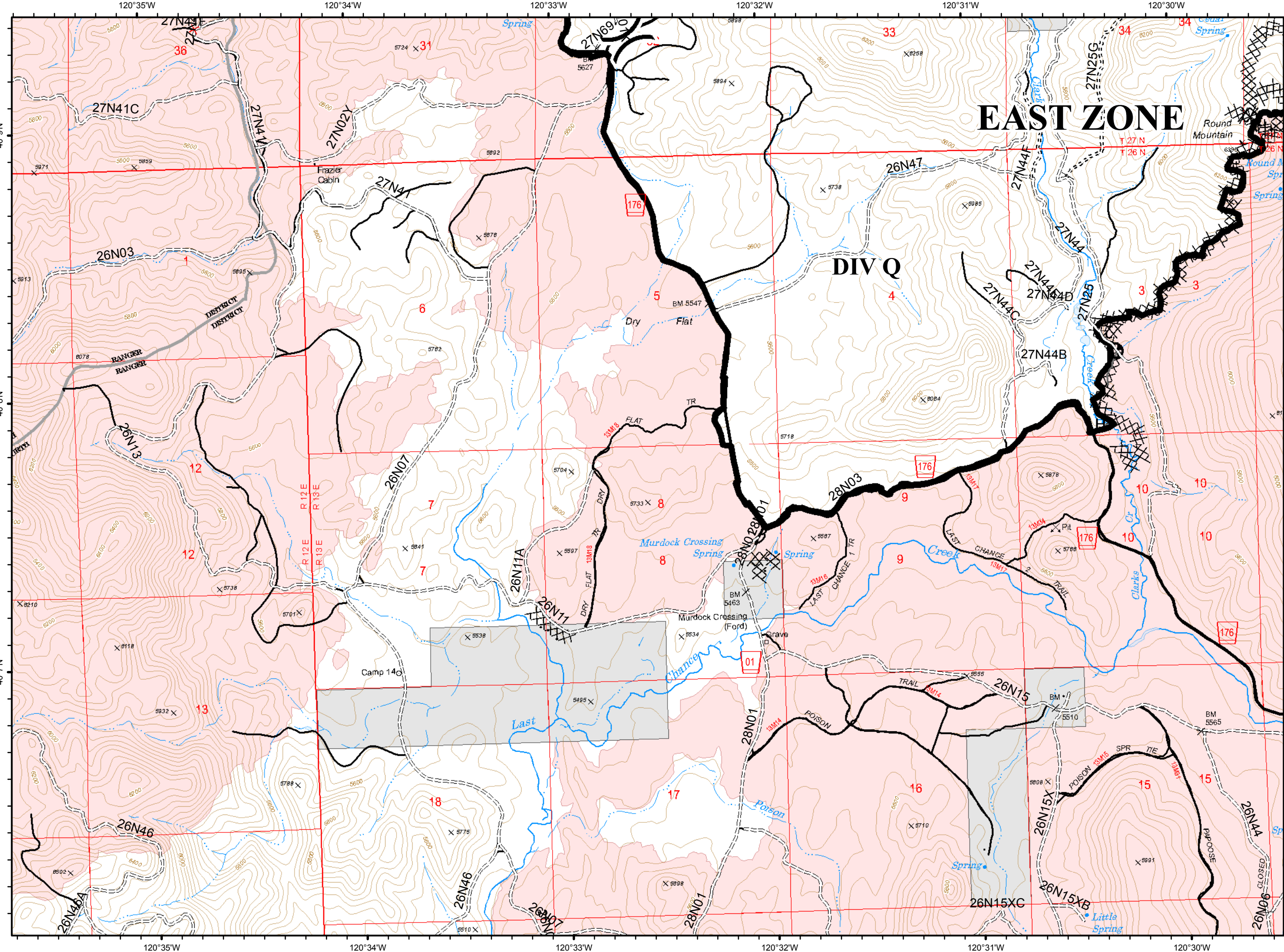
==== Basic Custodial Care (Closed)

==== High Clearance Roads

— High Degree of Comfort

X Undetermined Decommissioned

— travelRoute

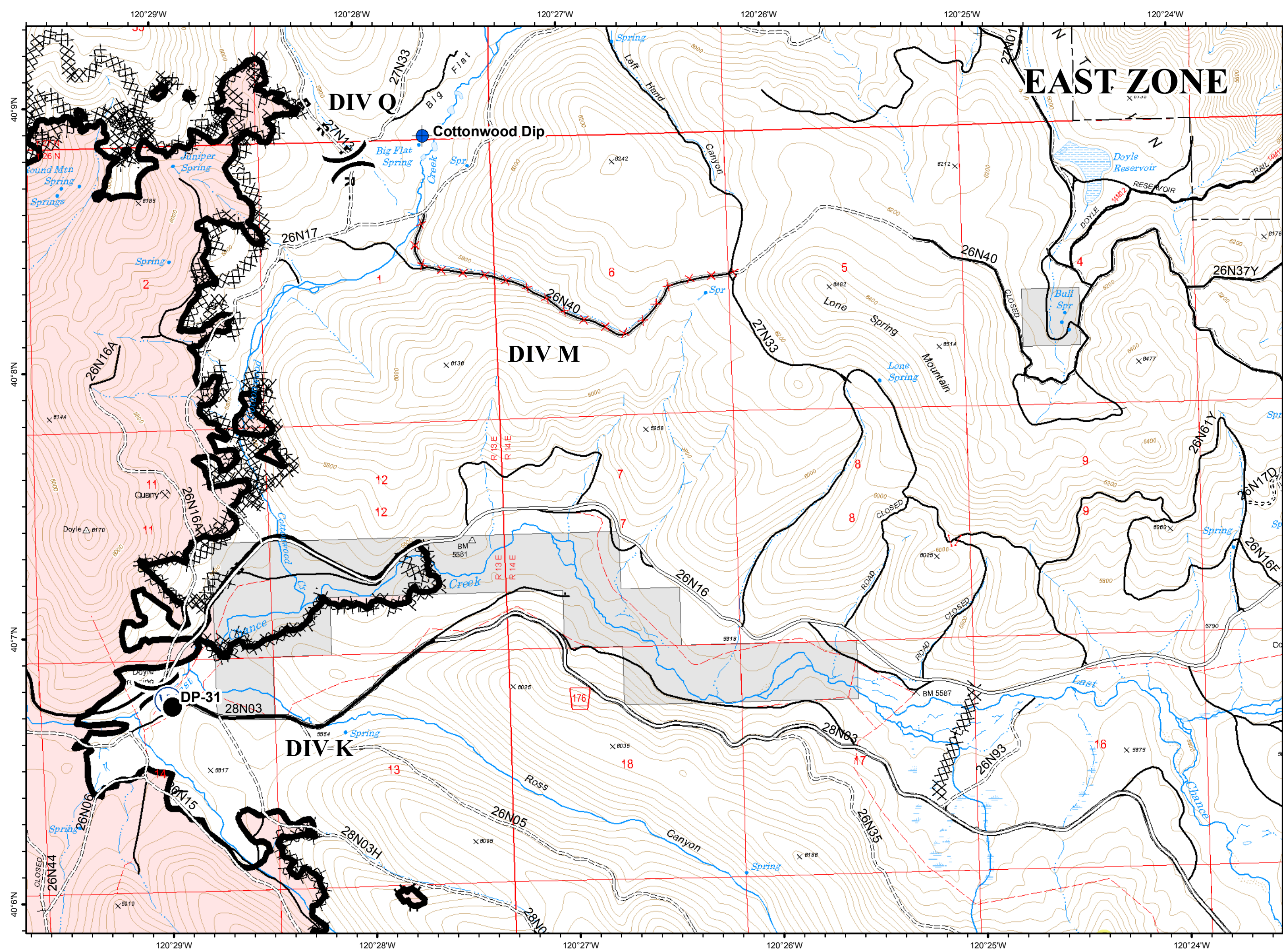
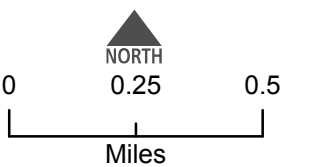
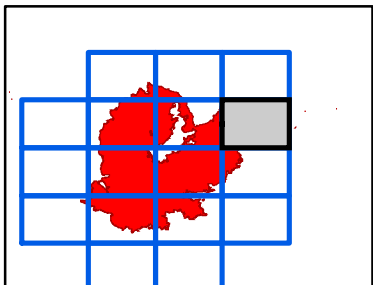


E7



- Dip Site
- Drop Point
- Hazard
- Water Source
- Division Break

- Completed Line
- Completed Dozer Line
- Completed Hand Line
- Road as Completed Line
- Access or Improved Road
- Milford Roads
- NOT - NOT NEEDED
- Basic Custodial Care (Closed)
- High Clearance Roads
- Suitable for Passenger Cars
- High Degree of Comfort
- NFSR Decommissioned
- travelRoute



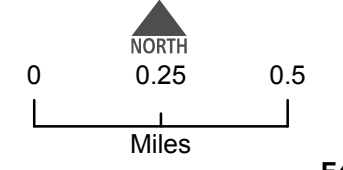
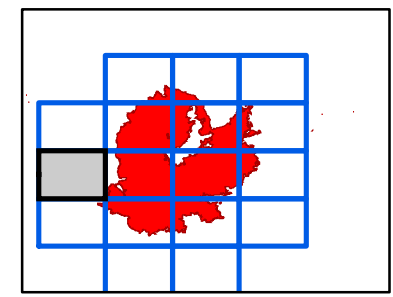
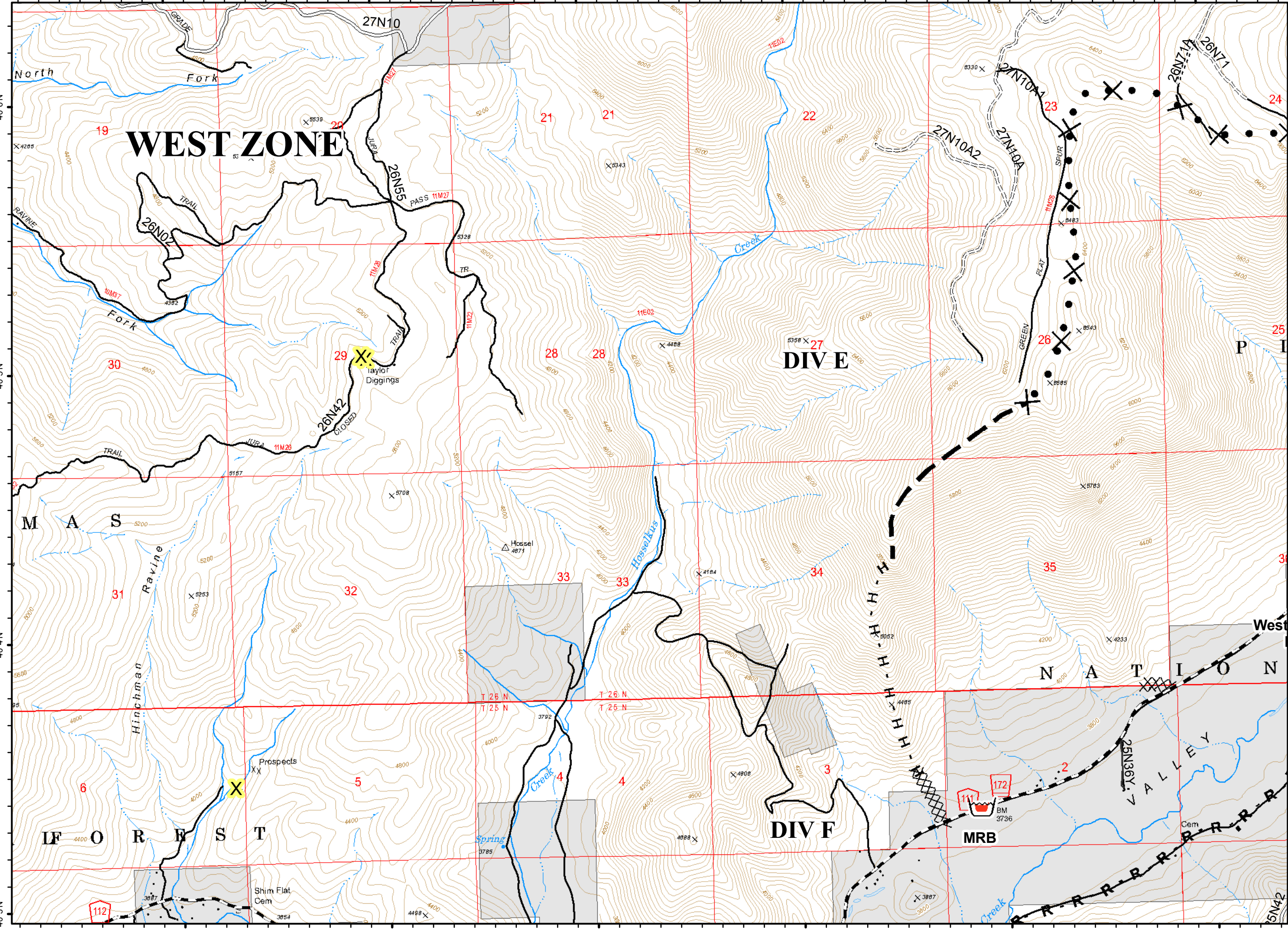
120°47'W 120°46'W 120°45'W 120°44'W 120°43'W 120°42'W

IAP Map
Walker
CA-PNF-001324
September 21, 2019

F4











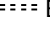
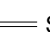






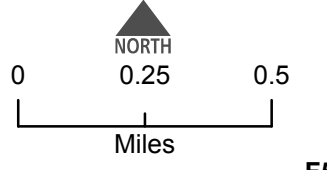
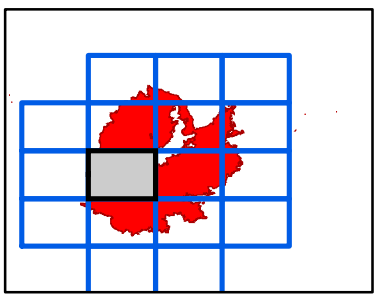
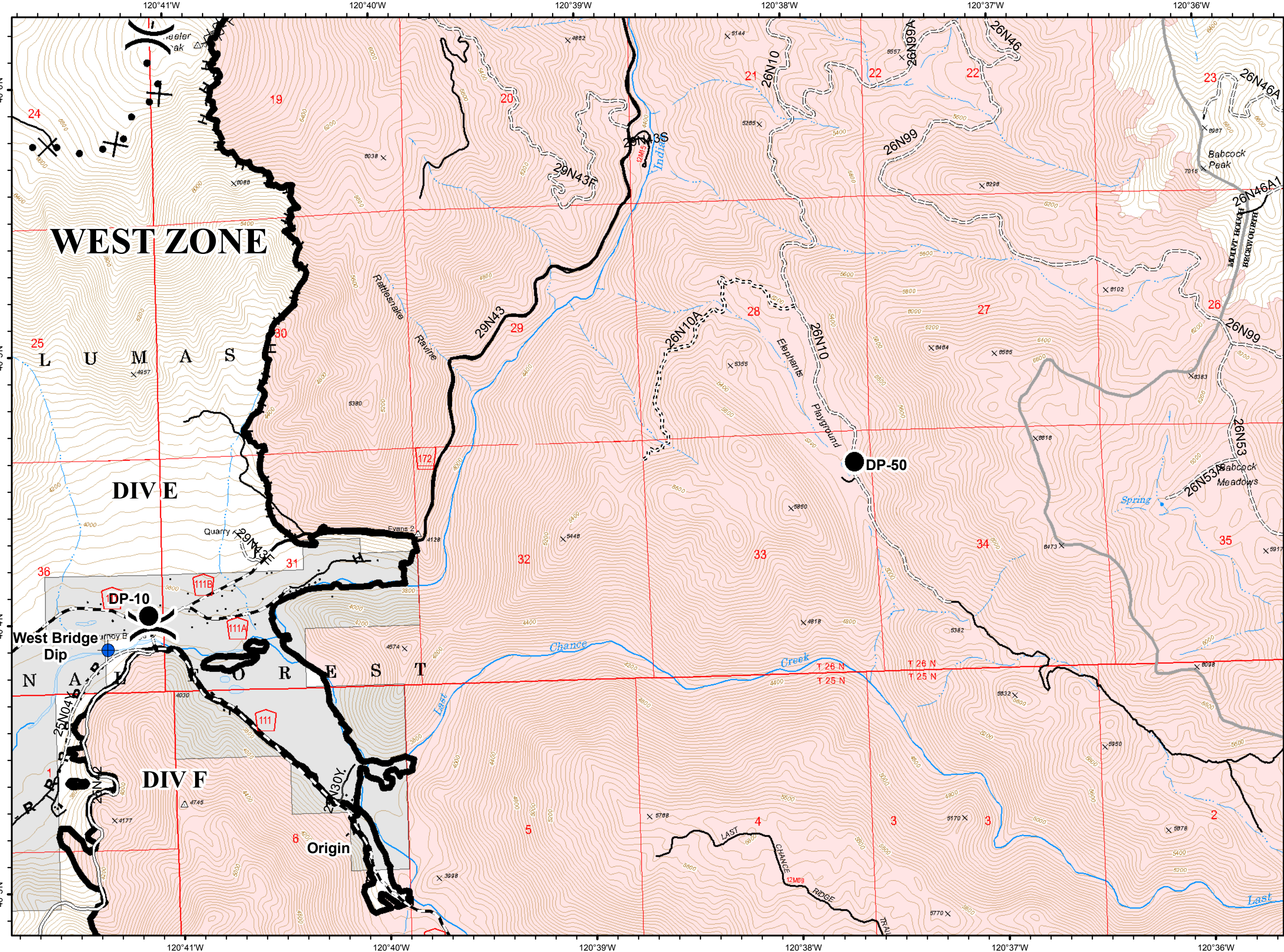
- Retardant/Mud Pit
- Completed Dozer Line
- H - Completed Hand Line
- R - Road as Completed Line
- Proposed Dozer Line
- Planned Fire Line
- C - COUNTY, PARISH, BOROUGH
- NOT - NOT NEEDED
- P - PRIVATE
- Basic Custodial Care (Closed)
- High Clearance Roads
- Suitable for Passenger Cars
- travelRoute
- X Known Mine Hazards
- X Abandoned Mine



F5



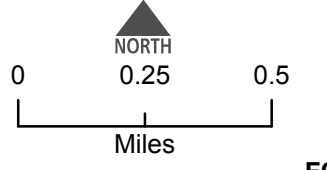
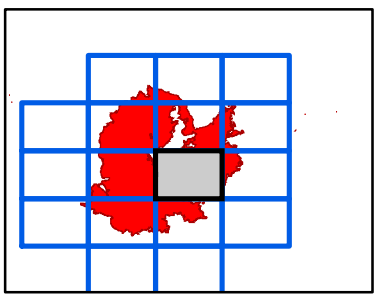
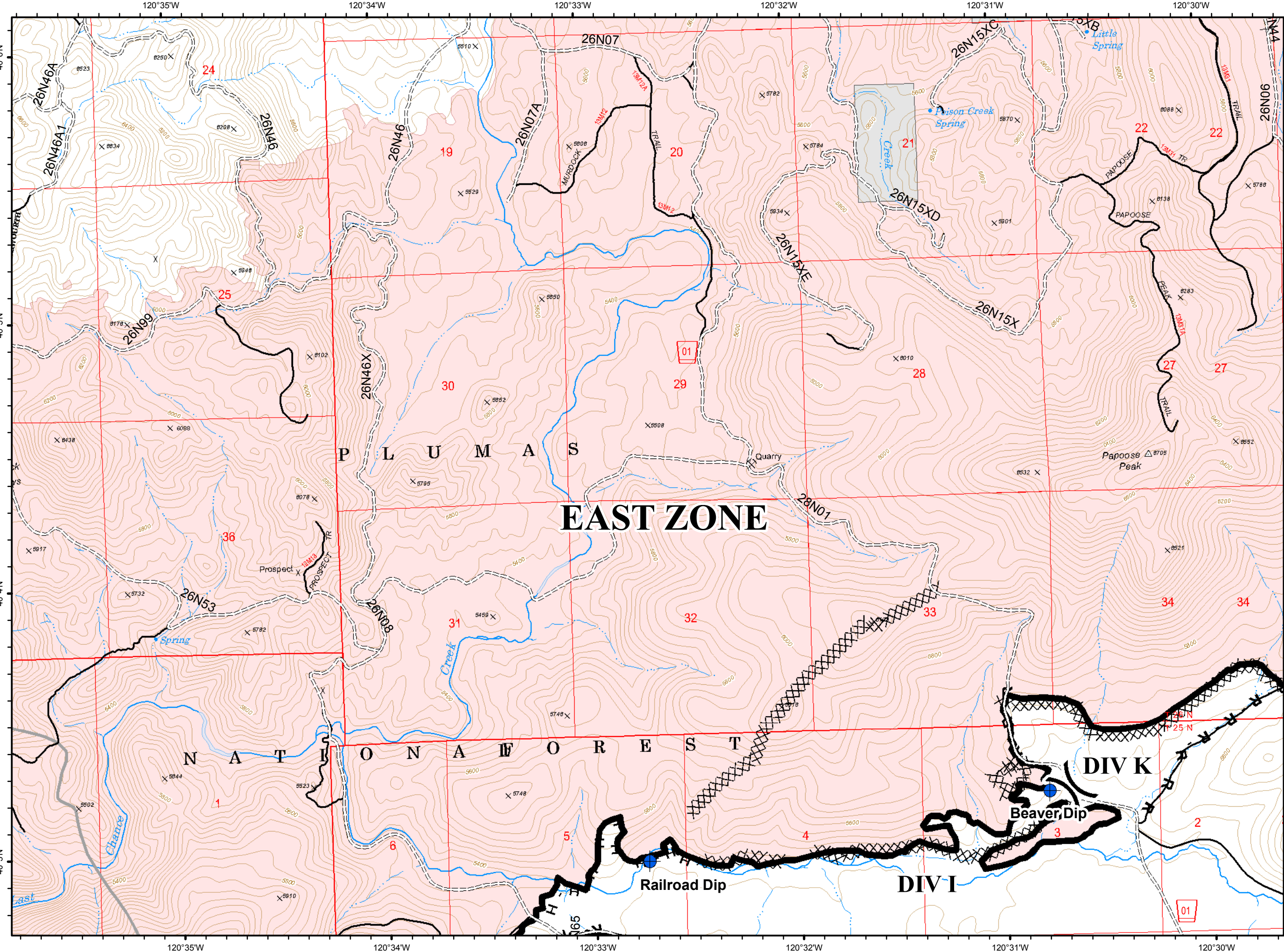
-  Dip Site
-  Drop Point
-  Division Break
-  Completed Line
-  Completed Dozer Line
-  Completed Hand Line
-  Road as Completed Line
-  Proposed Dozer Line
-  C - COUNTY, PARISH, BOROUGH
-  NOT - NOT NEEDED
-  P - PRIVATE
-  Basic Custodial Care (Closed)
-  High Clearance Roads
-  Suitable for Passenger Cars
-  High Degree of Comfort
-  travelRoute



F6



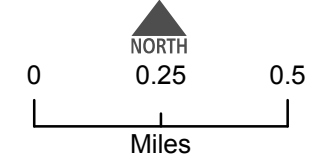
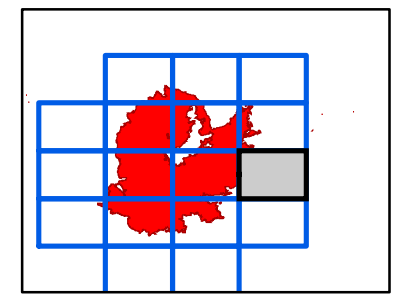
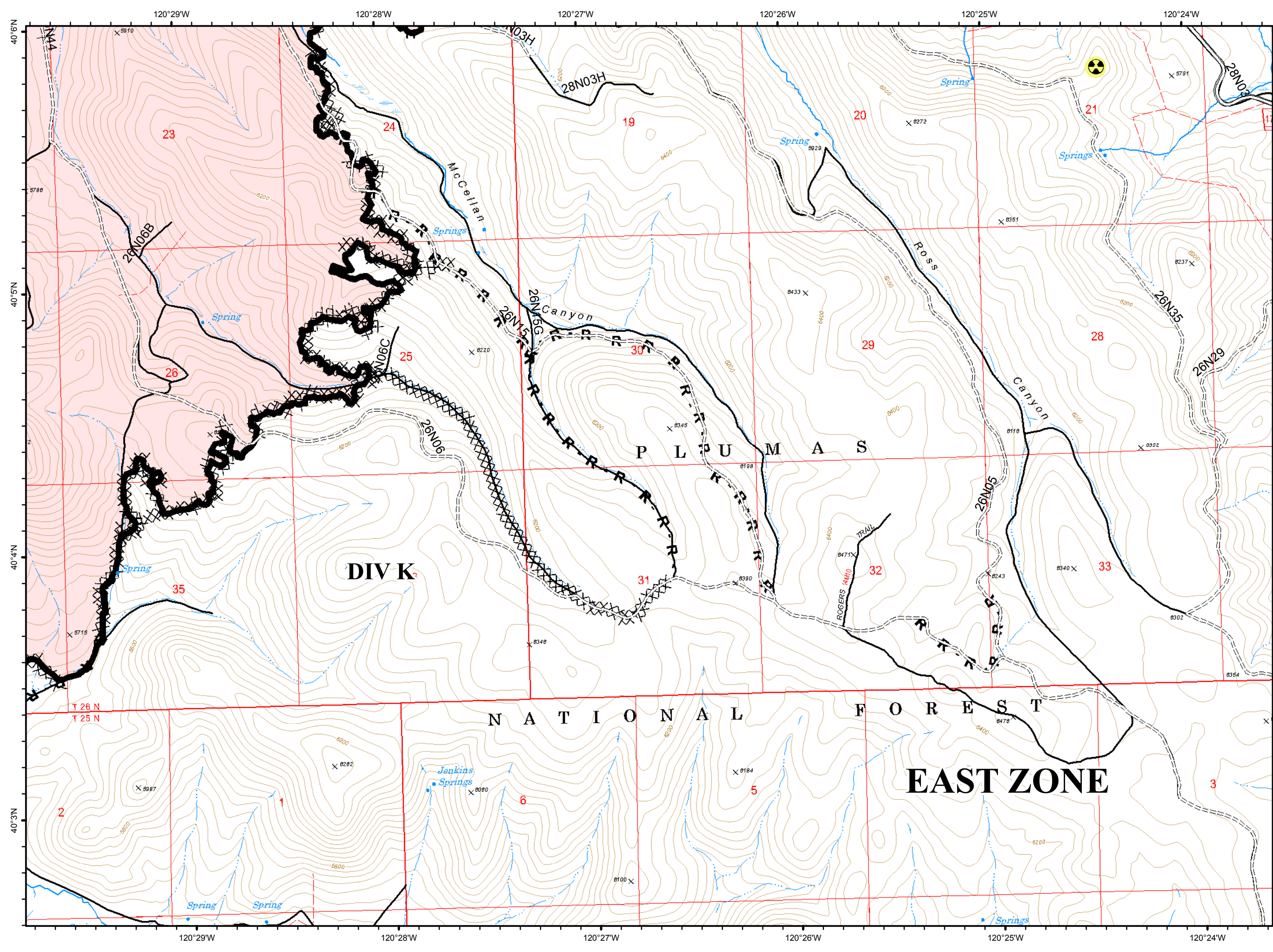
- Dip Site
- Division Break
- Completed Line
- Completed Dozer Line
- H - Completed Hand Line
- R - Road as Completed Line
- High Clearance Roads
- travelRoute



F7



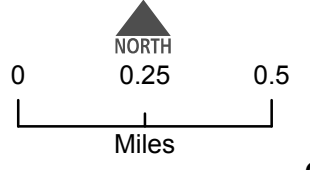
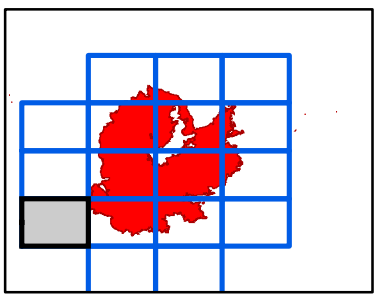
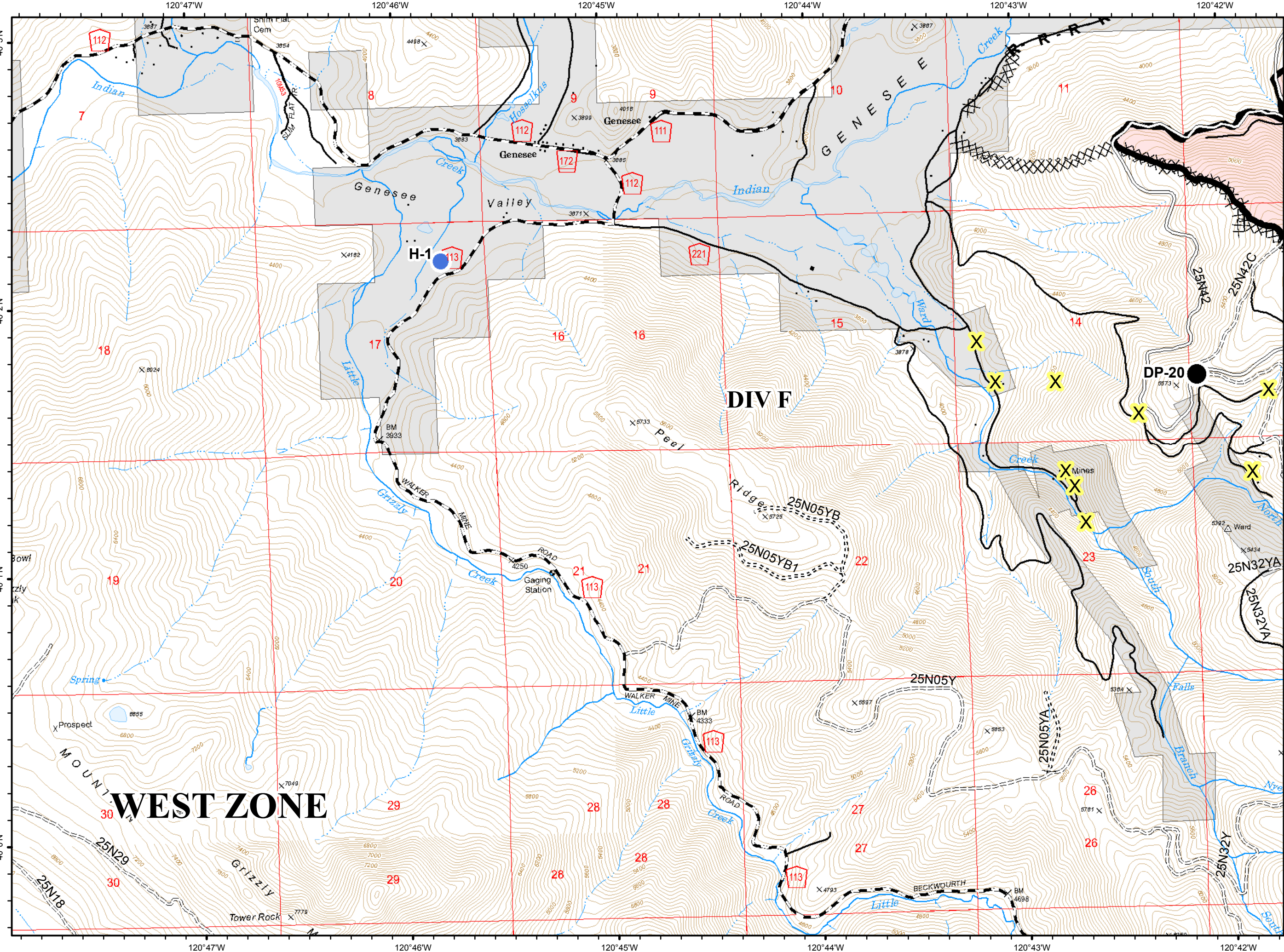
- Hazard
- Completed Line
- Completed Dozer Line
- H - Completed Hand Line
- R - Road as Completed Line
- Access or Improved Road
- NOT - NOT NEEDED
- High Clearance Roads
- Suitable for Passenger Cars
- travelRoute



G4



- Drop Point
- Helispot
- Completed Line
- XXXX Completed Dozer Line
- R - Road as Completed Line
- C - COUNTY, PARISH, BOROUGH
- NOT - NOT NEEDED
- ==== Basic Custodial Care (Closed)
- ==== High Clearance Roads
- Suitable for Passenger Cars
- travelRoute
- X Abandoned Mine



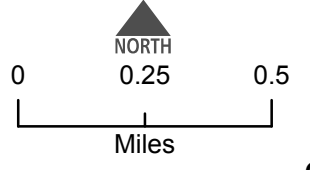
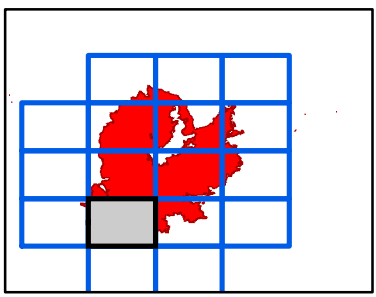
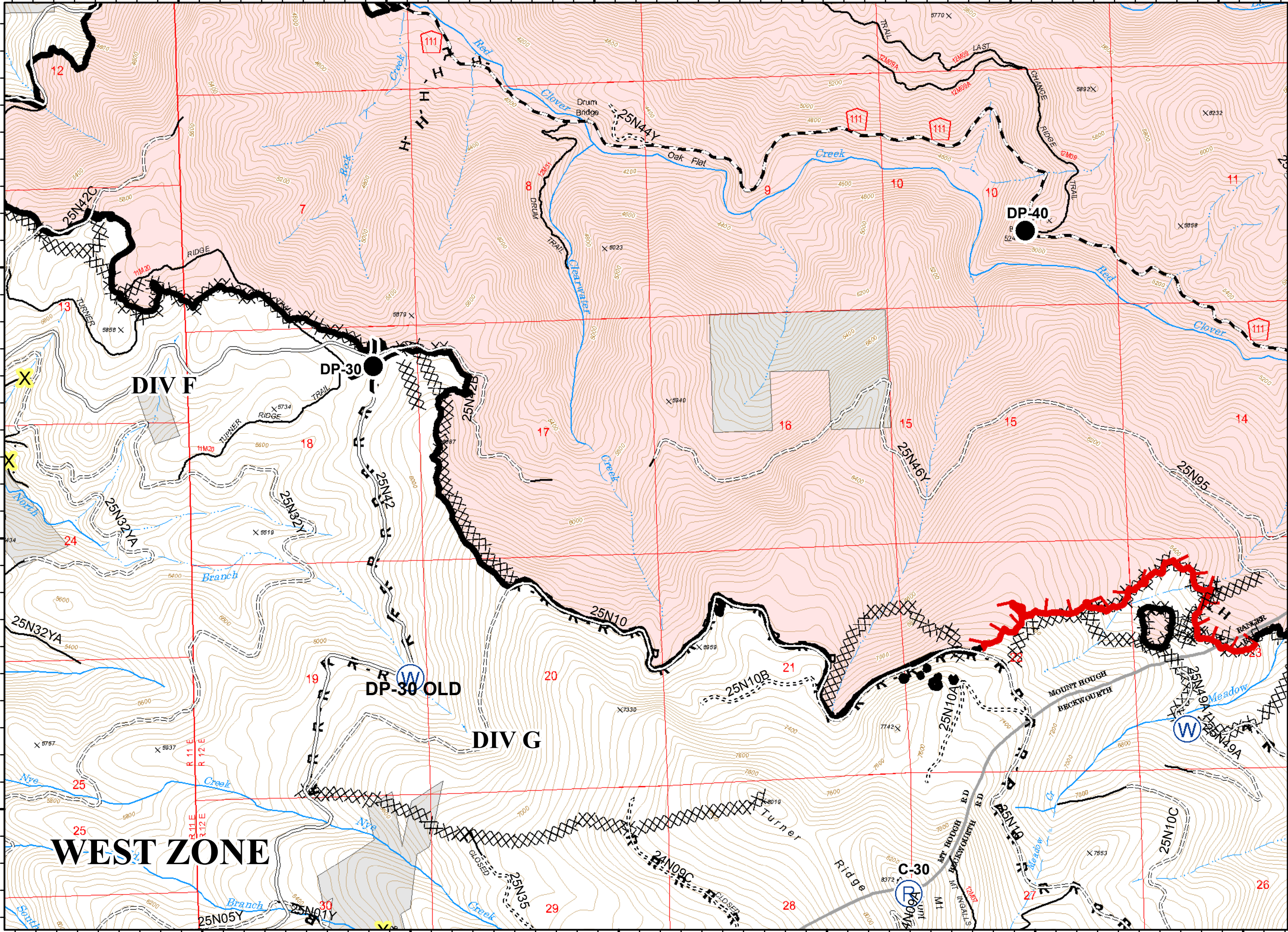
120°41'W 120°40'W 120°39'W 120°38'W 120°37'W 120°36'W

G5



- Drop Point
- Ⓡ Repeater
- Ⓦ Water Source
- ⌋ Division Break

- ▬ Uncontrolled Fire Edge
- Completed Line
- ⊗ Completed Dozer Line
- H · Completed Hand Line
- R · Road as Completed Line
- C - COUNTY, PARISH, BOROUGH
- NOT - NOT NEEDED
- ⋯ Basic Custodial Care (Closed)
- ⋯ High Clearance Roads
- Suitable for Passenger Cars
- travelRoute
- X Abandoned Mine



WEST ZONE

DIV F

DIV G

DP-30

DP-40

DP-30 OLD

C-30

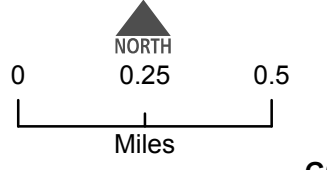
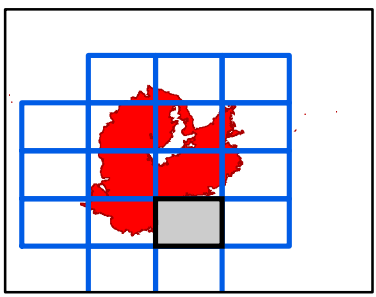
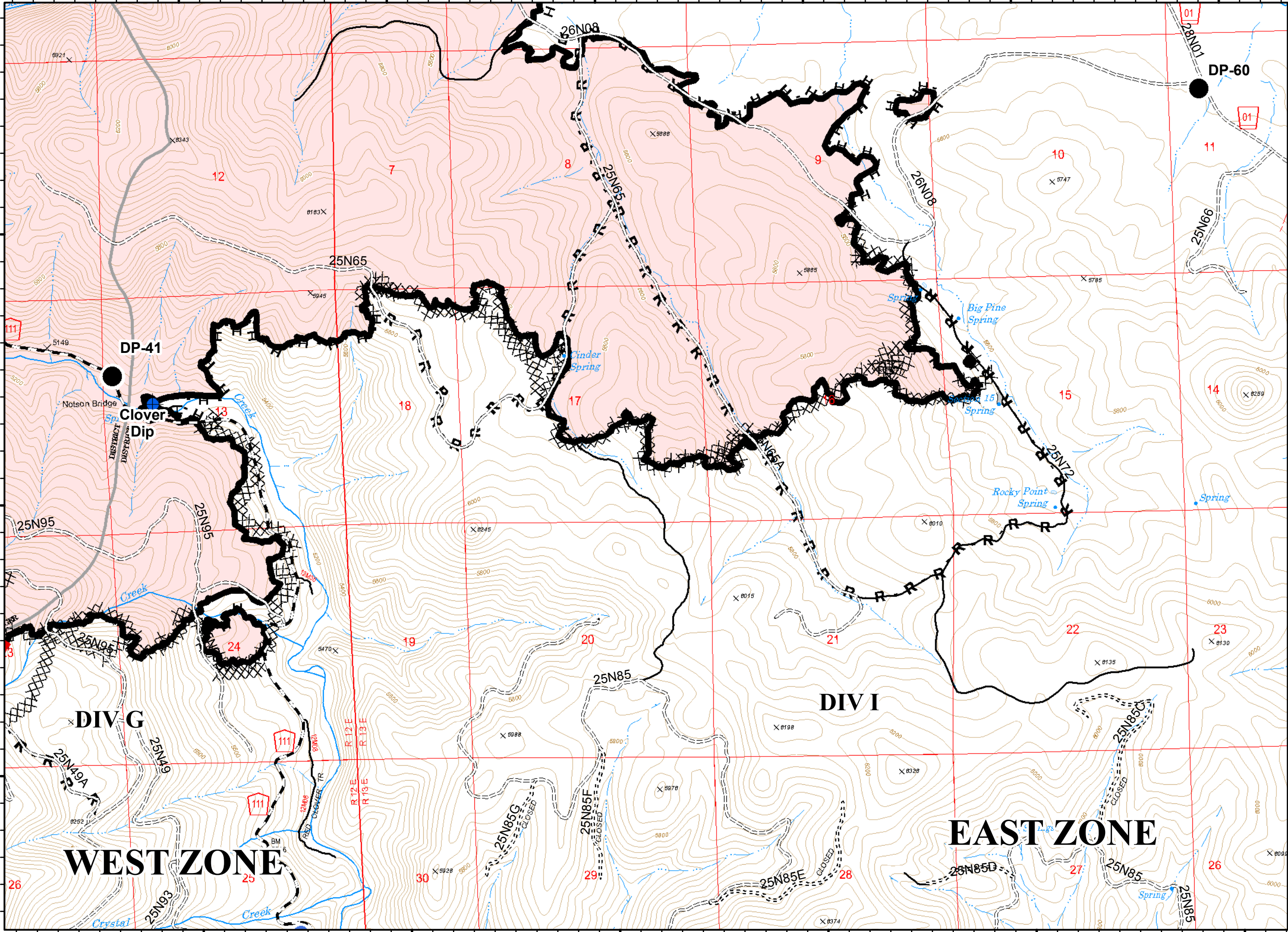
120°35'W 120°34'W 120°33'W 120°32'W 120°31'W 120°30'W

IAP Map
Walker
CA-PNF-001324
September 21, 2019

G6



- Dip Site
- Drop Point
- Helispot
- Uncontrolled Fire Edge
- Completed Line
- Completed Dozer Line
- Completed Hand Line
- Road as Completed Line
- Access or Improved Road
- C - COUNTY, PARISH, BOROUGH
- Basic Custodial Care (Closed)
- High Clearance Roads
- Undetermined, Unknown and Other
- travelRoute

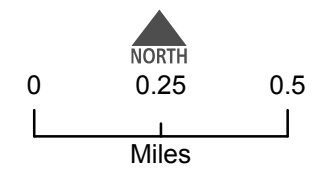
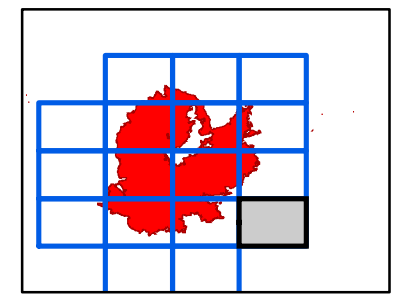
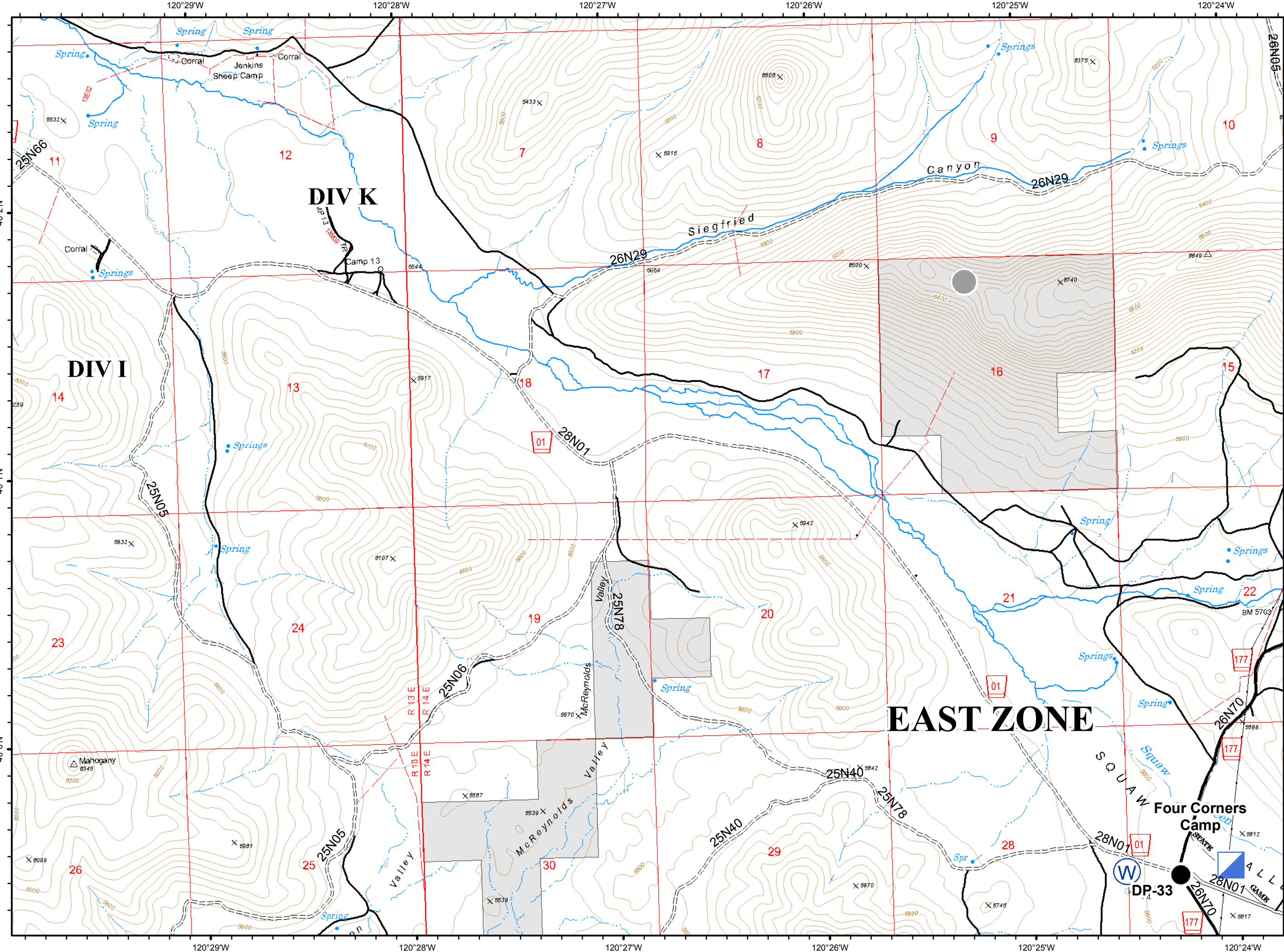


120°35'W 120°34'W 120°33'W 120°32'W 120°31'W 120°30'W

G7



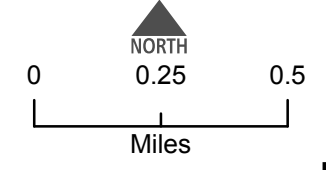
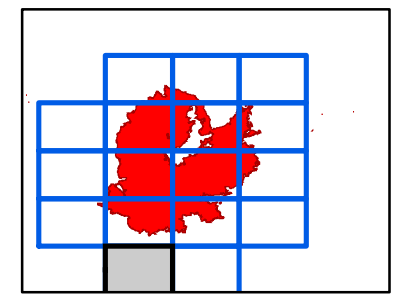
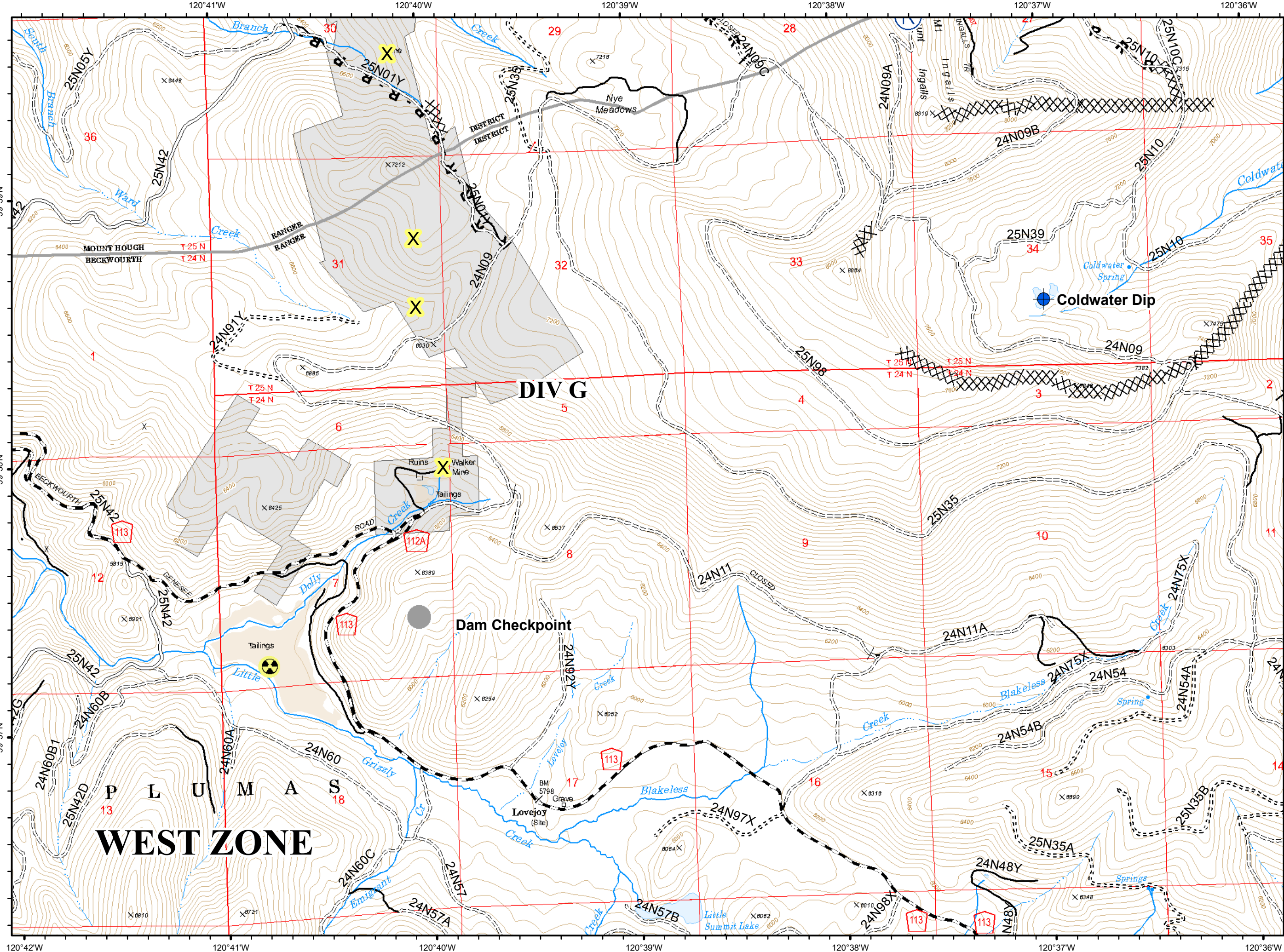
- Drop Point
- ▣ Incident Command Post
- Ⓜ Water Source
- Other
- ==== High Clearance Roads
- Suitable for Passenger Cars
- High Degree of Comfort
- travelRoute



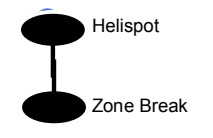
H5



- Dip Site
- Hazard
- Repeater
- Other
- Completed Dozer Line
- R - Road as Completed Line
- C - COUNTY, PARISH, BOROUGH
- NOT - NOT NEEDED
- Basic Custodial Care (Closed)
- High Clearance Roads
- Suitable for Passenger Cars
- travelRoute
- Abandoned Mine



H6



- XXXX Completed Dozer Line
- H - Completed Hand Line
- C - COUNTY, PARISH, BOROUGH
- NOT - NOT NEEDED
- Basic Custodial Care (Closed)
- ==== High Clearance Roads
- Suitable for Passenger Cars
- High Degree of Comfort
- travelRoute

