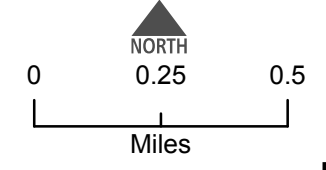
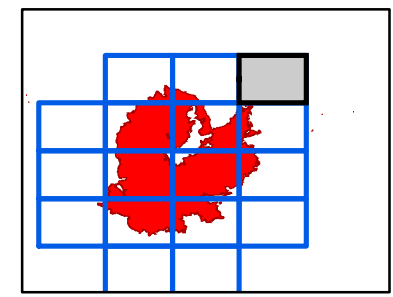
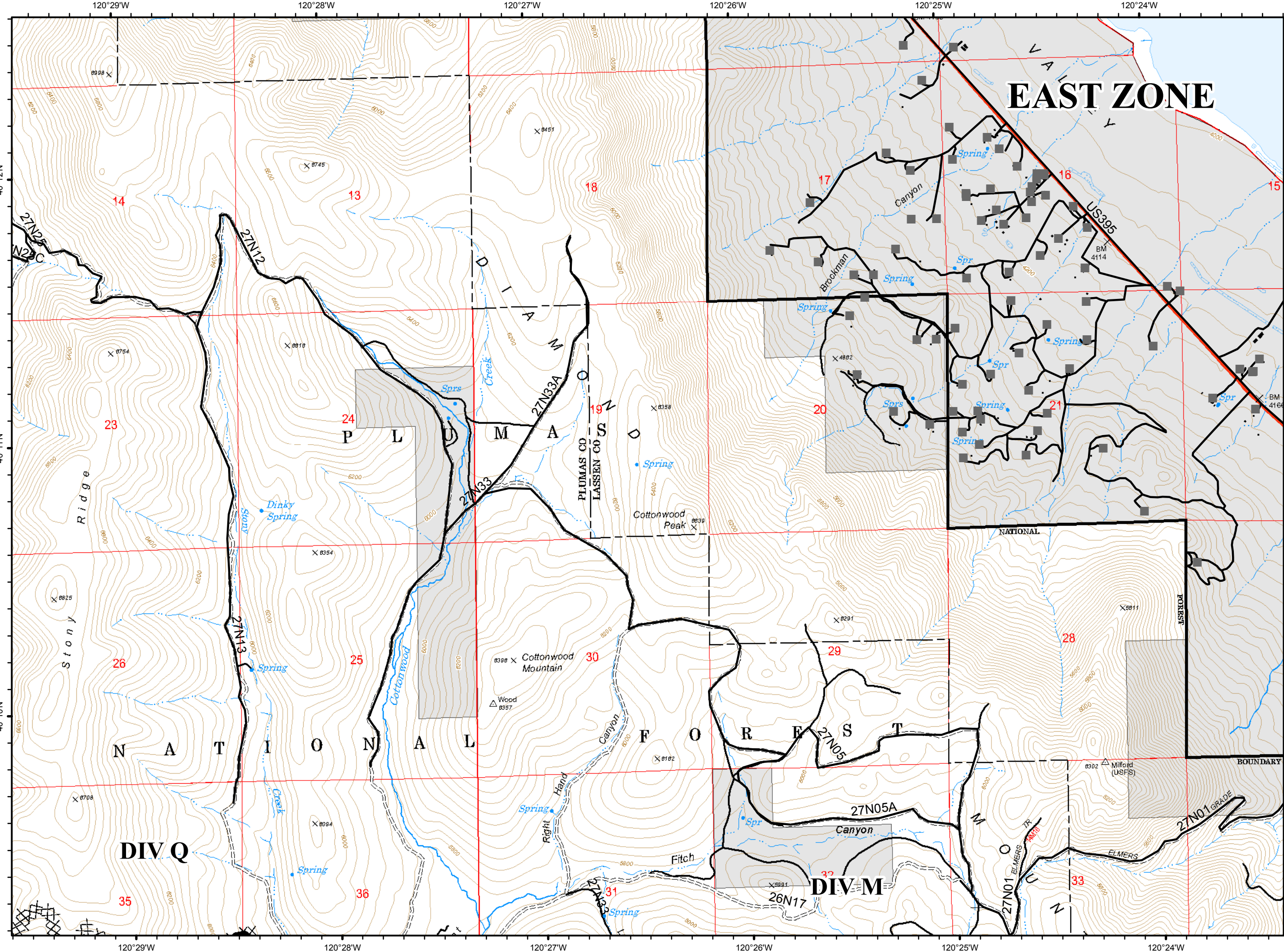


D7



- Completed Line
- Completed Dozer Line
- Milford Roads
- NOT - NOT NEEDED
- US - US HIGHWAY OR ROUTE
- High Clearance Roads
- travelRoute
- Milford Habitable Structures

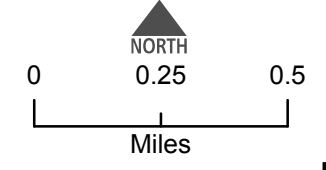
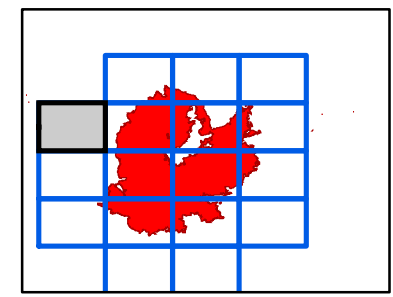
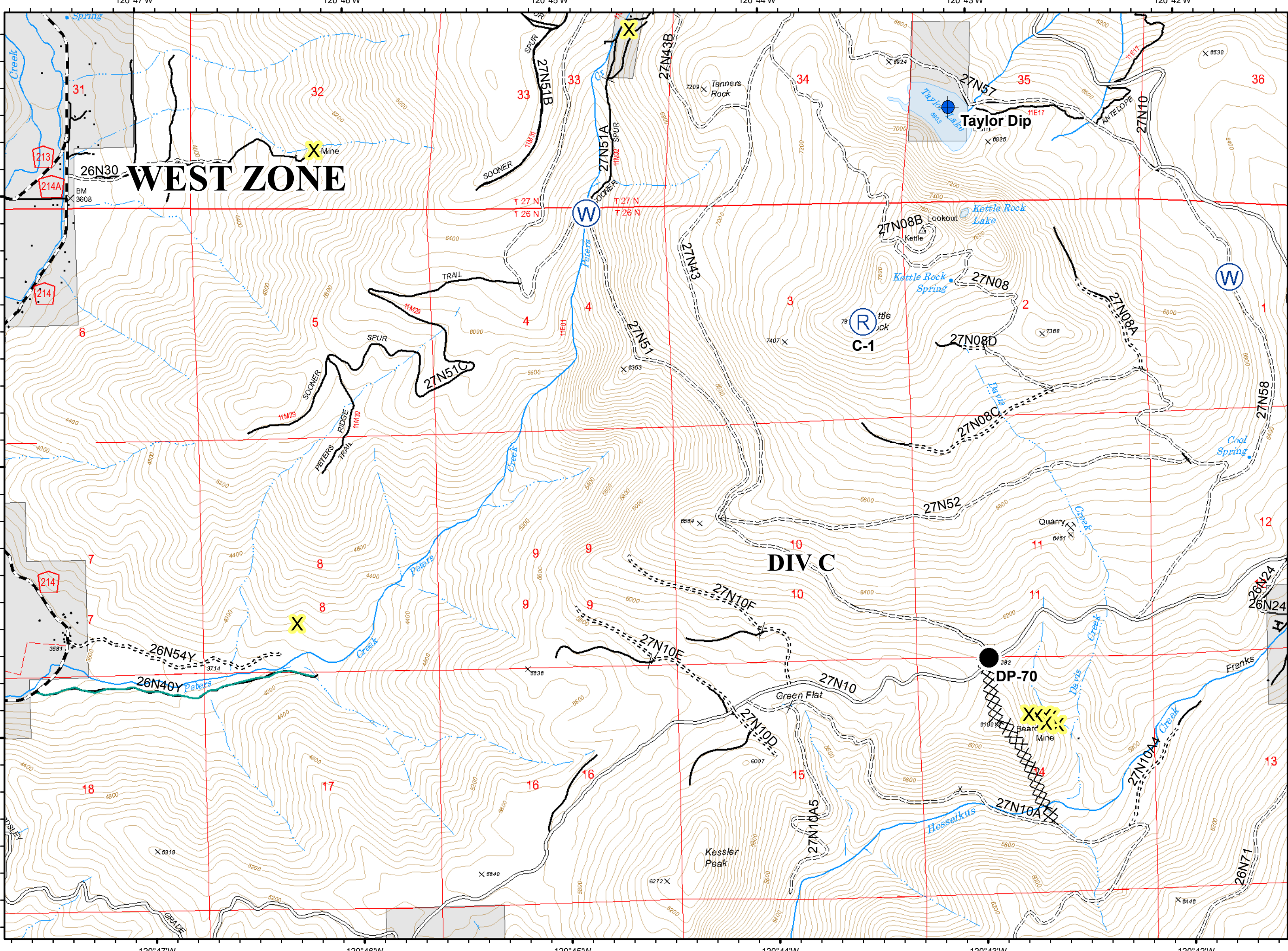


E4



- Dip Site
- Drop Point
- Repeater
- Water Source

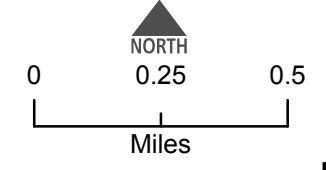
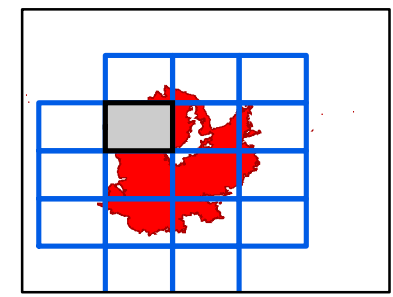
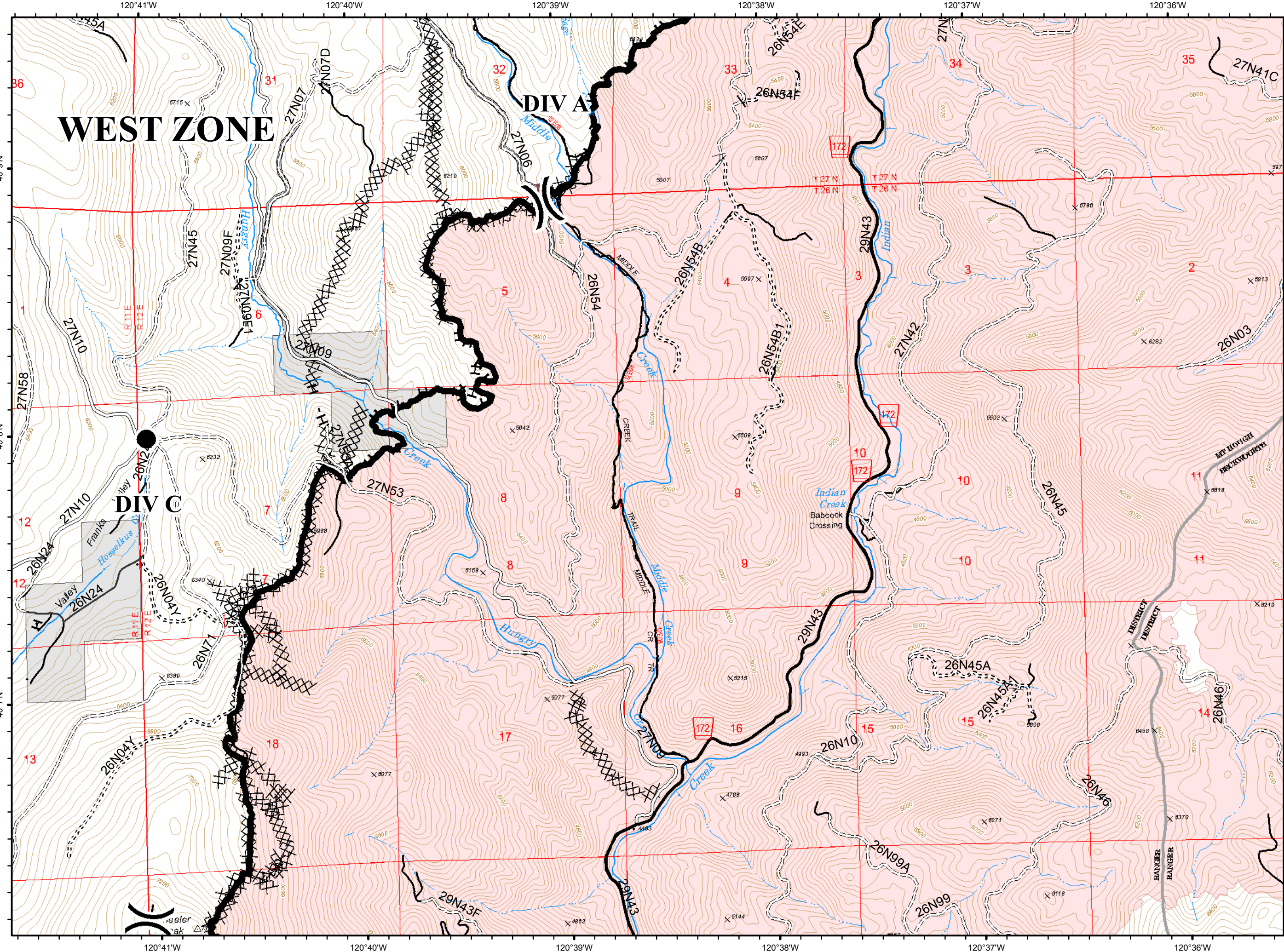
- Completed Dozer Line
- Completed Hand Line
- C - COUNTY, PARISH, BOROUGH
- NOT - NOT NEEDED
- P - PRIVATE
- <all other values>
- Basic Custodial Care (Closed)
- High Clearance Roads
- Suitable for Passenger Cars
- travelRoute
- Known Mine Hazards
- Abandoned Mine



E5



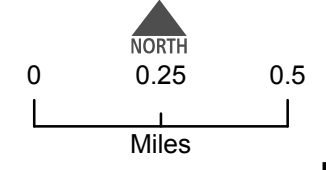
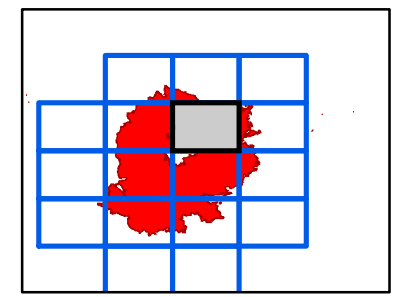
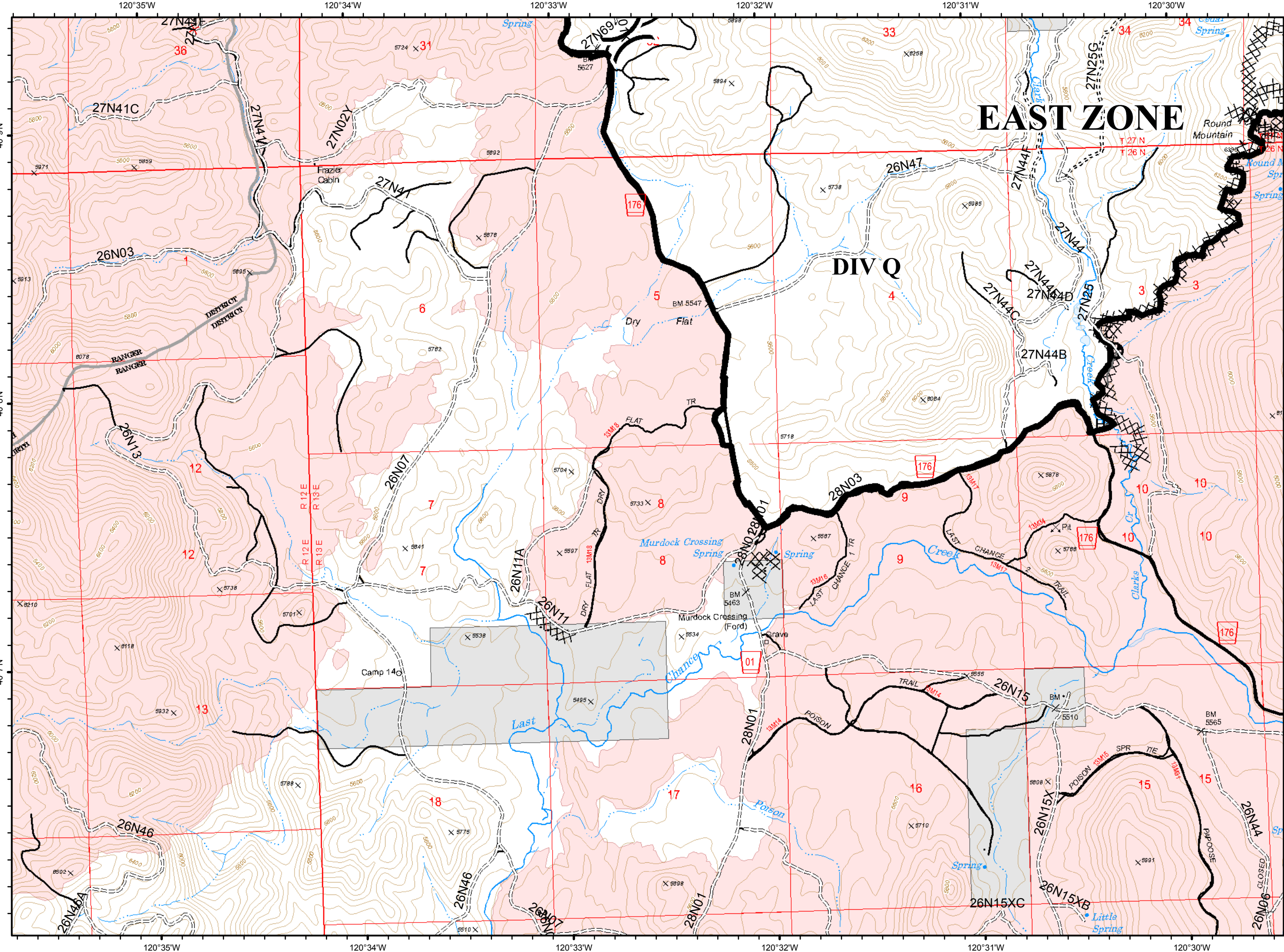
- Drop Point
- Dozer Push
- Division Break
- Completed Line
- Completed Dozer Line
- Completed Hand Line
- Access or Improved Road
- Proposed Dozer Line
- P - PRIVATE
- Basic Custodial Care (Closed)
- High Clearance Roads
- Suitable for Passenger Cars
- High Degree of Comfort
- travelRoute



E6











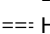

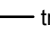





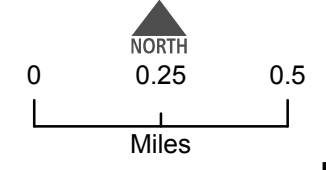
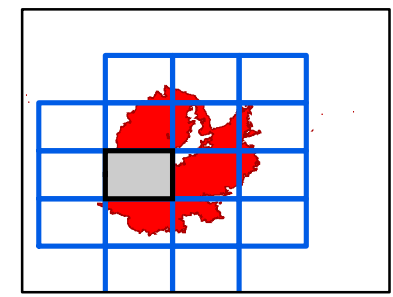
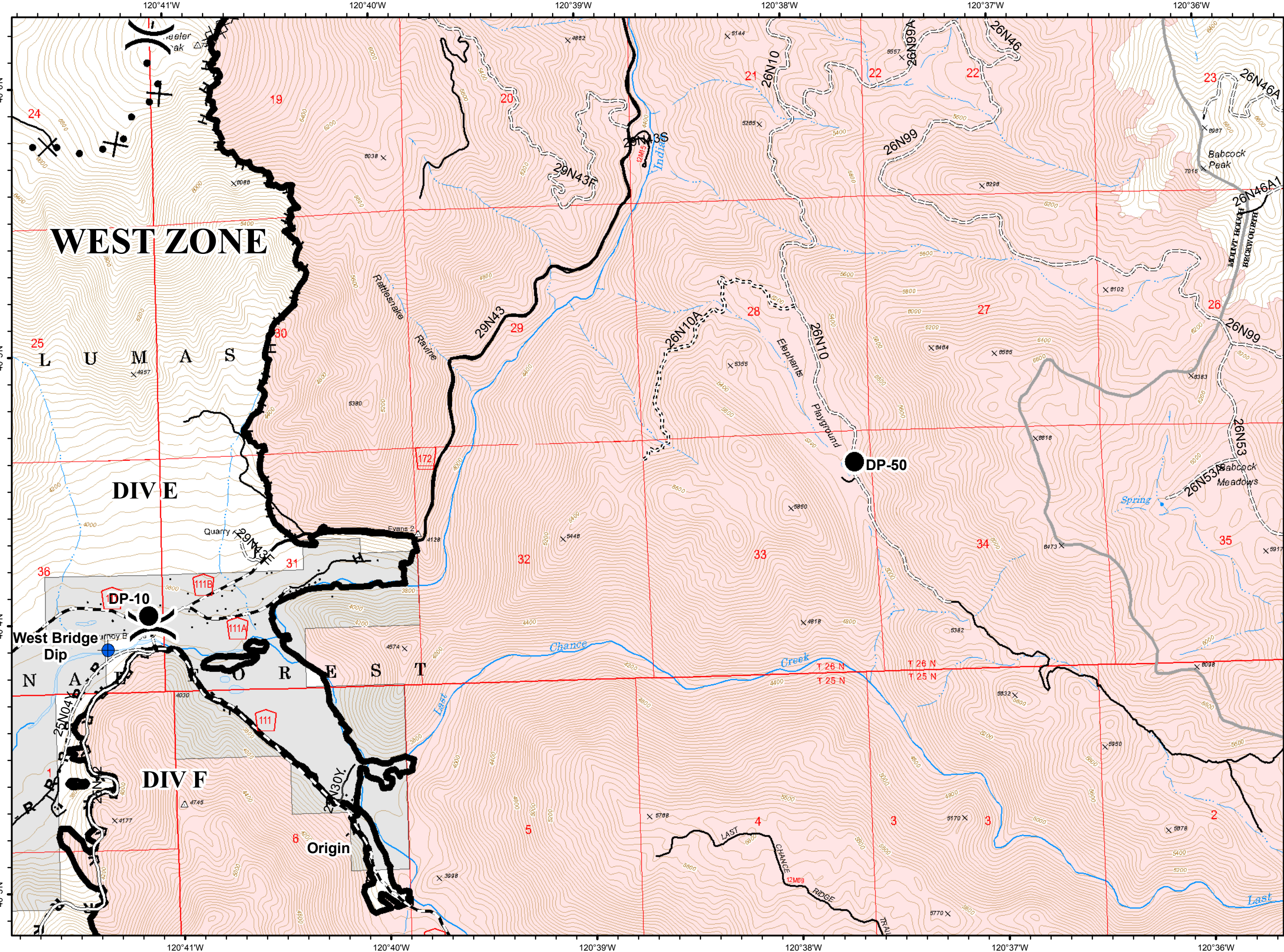
- () Division Break
- Completed Line
- XXXX Completed Dozer Line
- H - Completed Hand Line
- ⊕ Other
- ==== Basic Custodial Care (Closed)
- ==== High Clearance Roads
- High Degree of Comfort
- X Undetermined Decommissioned
- travelRoute



F5



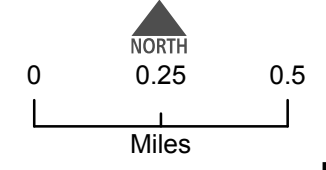
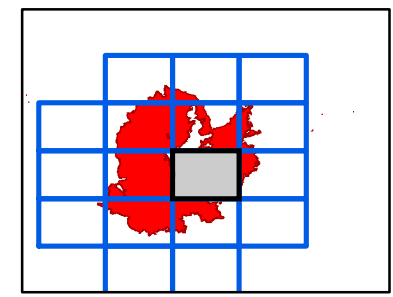
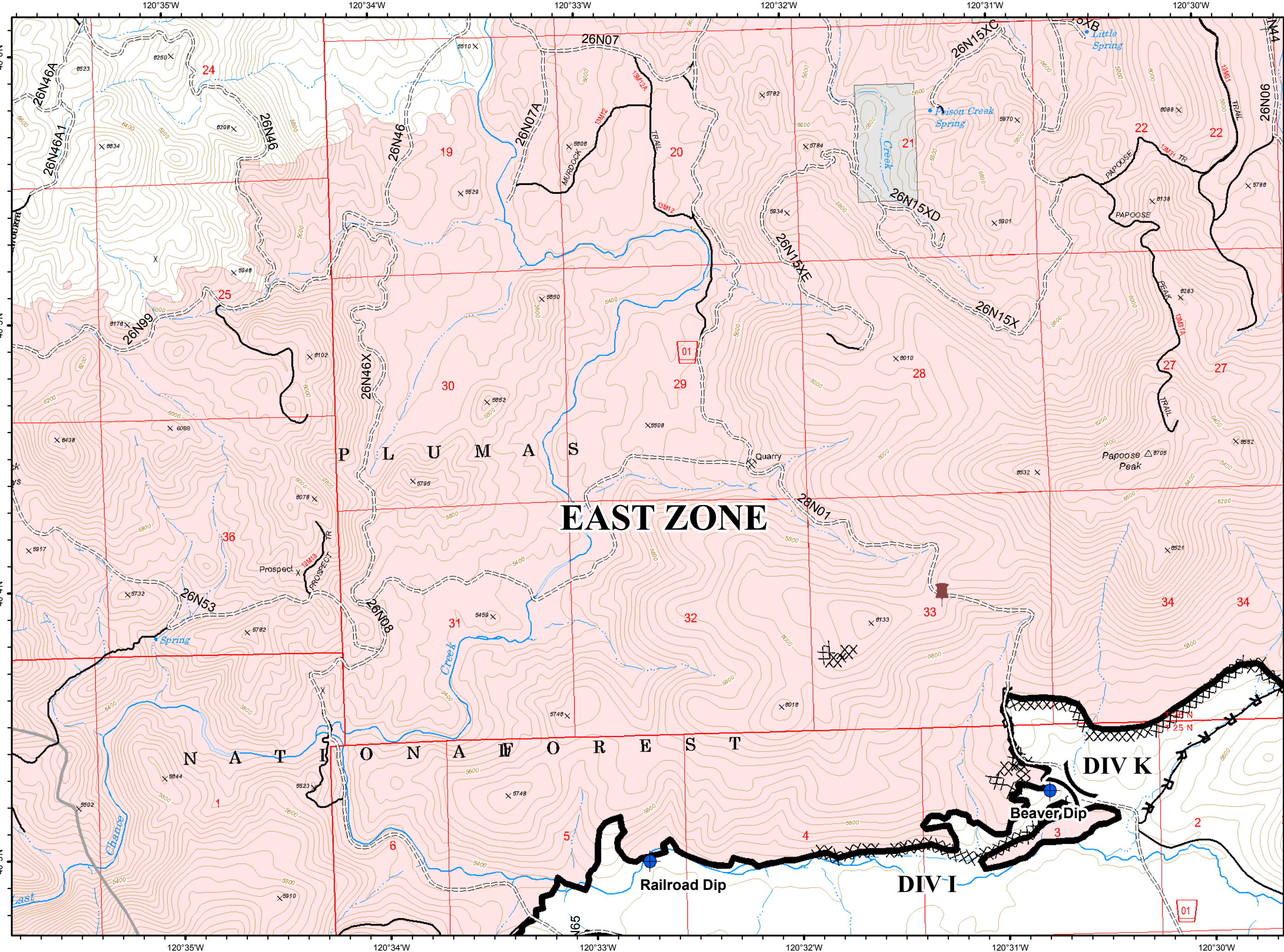
-  Dip Site
-  Drop Point
-  Division Break
-  Completed Line
-  Completed Dozer Line
-  Completed Hand Line
-  Road as Completed Line
-  Proposed Dozer Line
-  C - COUNTY, PARISH, BOROUGH
-  NOT - NOT NEEDED
-  P - PRIVATE
-  Basic Custodial Care (Closed)
-  High Clearance Roads
-  Suitable for Passenger Cars
-  High Degree of Comfort
-  travelRoute



F6



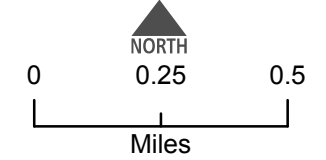
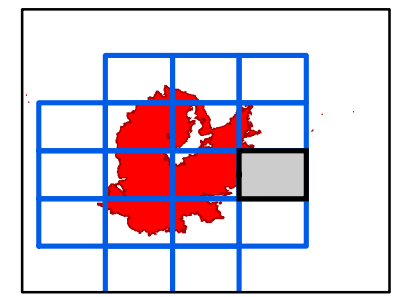
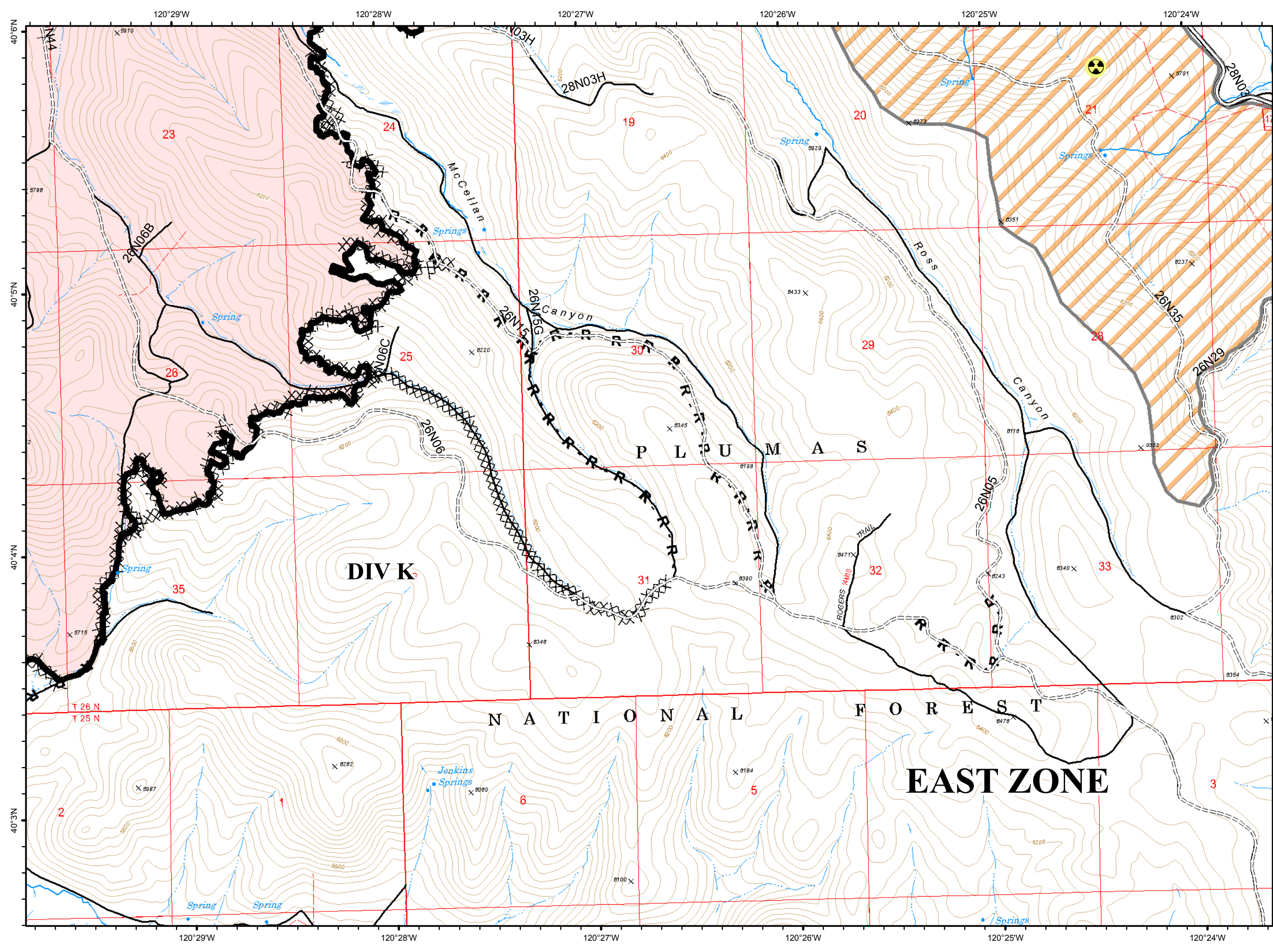
- Dip Site
- Dozer Push
- Division Break
- Completed Line
- Completed Dozer Line
- R - Road as Completed Line
- High Clearance Roads
- travelRoute



F7



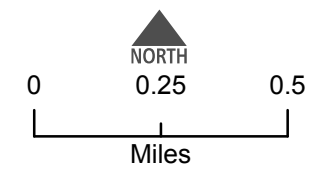
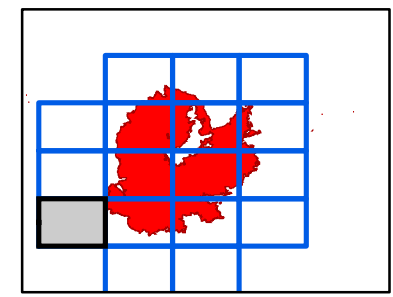
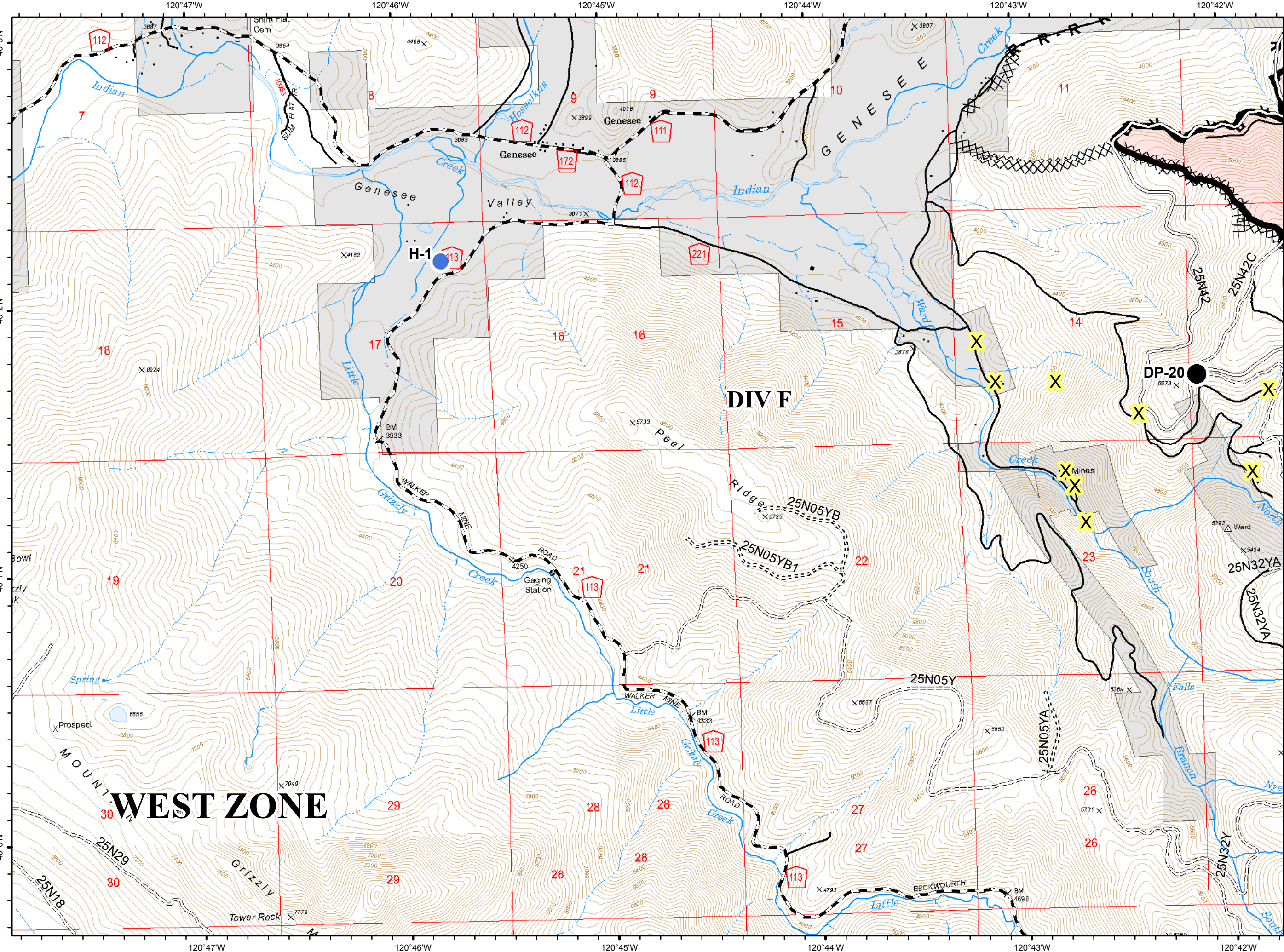
- Hazard
- Completed Line
- Completed Dozer Line
- H - Completed Hand Line
- R - Road as Completed Line
- Access or Improved Road
- Exclusion Zone
- NOT - NOT NEEDED
- High Clearance Roads
- Suitable for Passenger Cars
- travelRoute



G4



- Drop Point
- Helispot
- Completed Line
- Completed Dozer Line
- R - Road as Completed Line
- C - COUNTY, PARISH, BOROUGH
- NOT - NOT NEEDED
- Basic Custodial Care (Closed)
- High Clearance Roads
- Suitable for Passenger Cars
- travelRoute
- Abandoned Mine



120°41'W 120°40'W 120°39'W 120°38'W 120°37'W 120°36'W

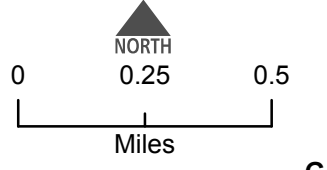
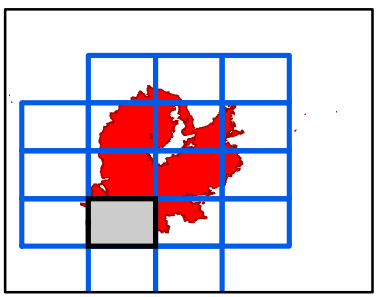
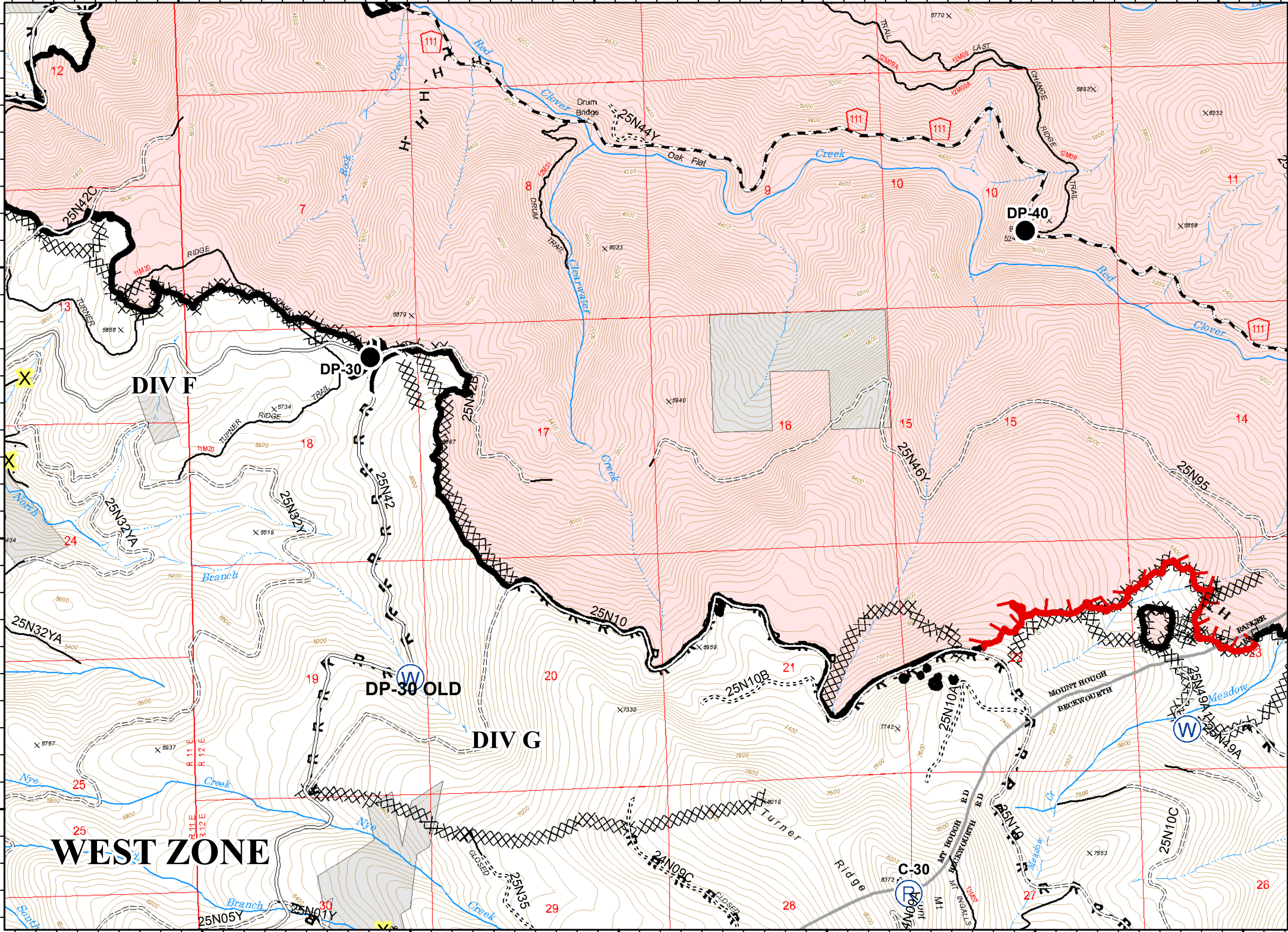
G5



- Drop Point
- Ⓡ Repeater
- Ⓦ Water Source
- ⌋ Division Break

- ▬ Uncontrolled Fire Edge
- ▬ Completed Line
- ▬ Completed Dozer Line
- H - Completed Hand Line
- R - Road as Completed Line

- ▬ Access or Improved Road
- ▬ C - COUNTY, PARISH, BOROUGH
- ▬ NOT - NOT NEEDED
- ▬ Basic Custodial Care (Closed)
- ▬ High Clearance Roads
- ▬ Suitable for Passenger Cars
- ▬ travelRoute
- X Abandoned Mine



WEST ZONE

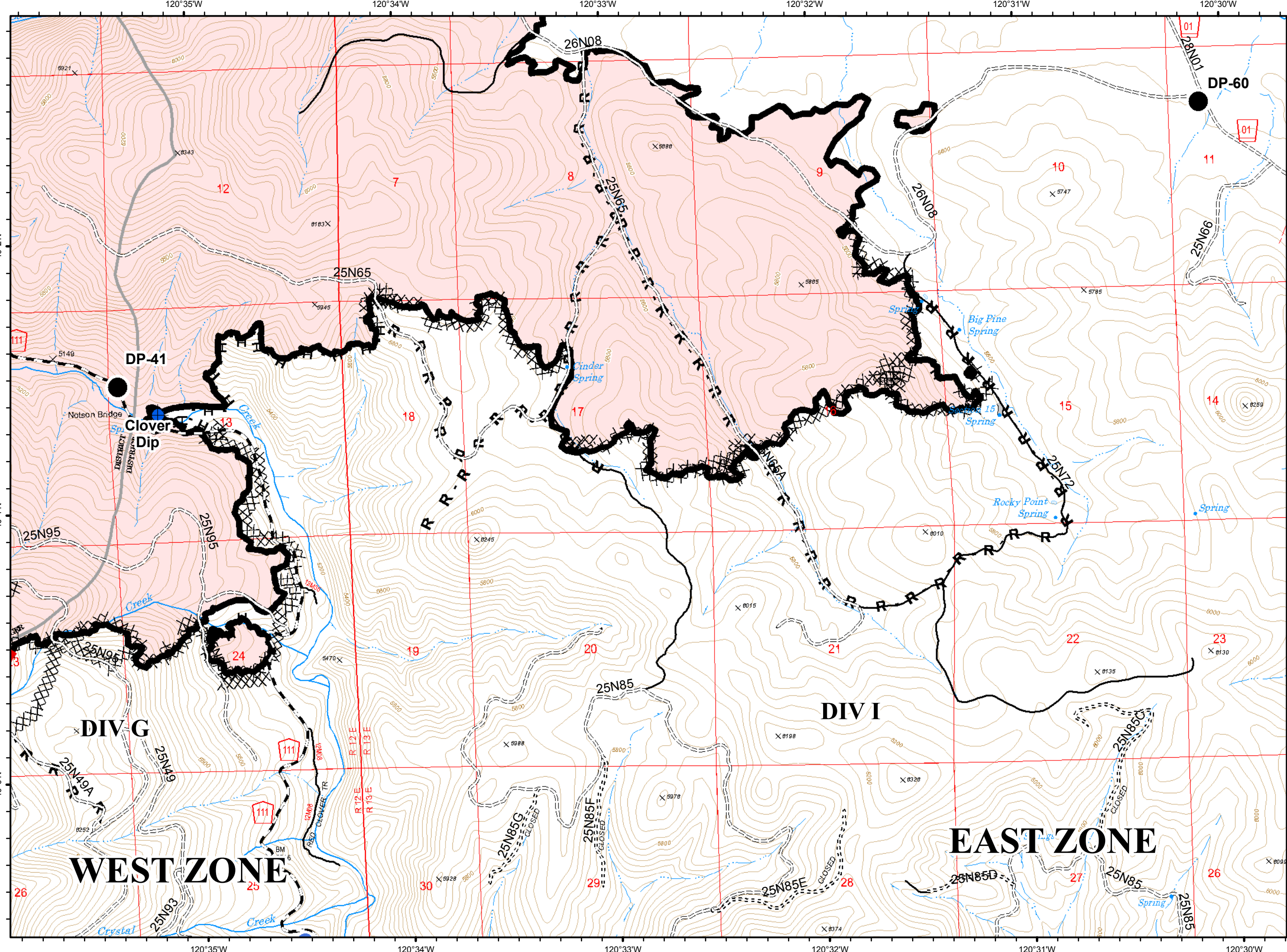
DIV F

DIV G

DP-40

DP-30 OLD

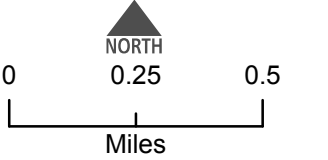
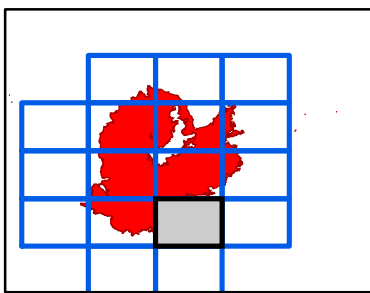
C-30



G6



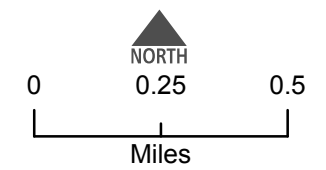
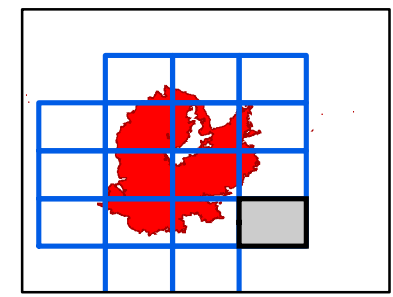
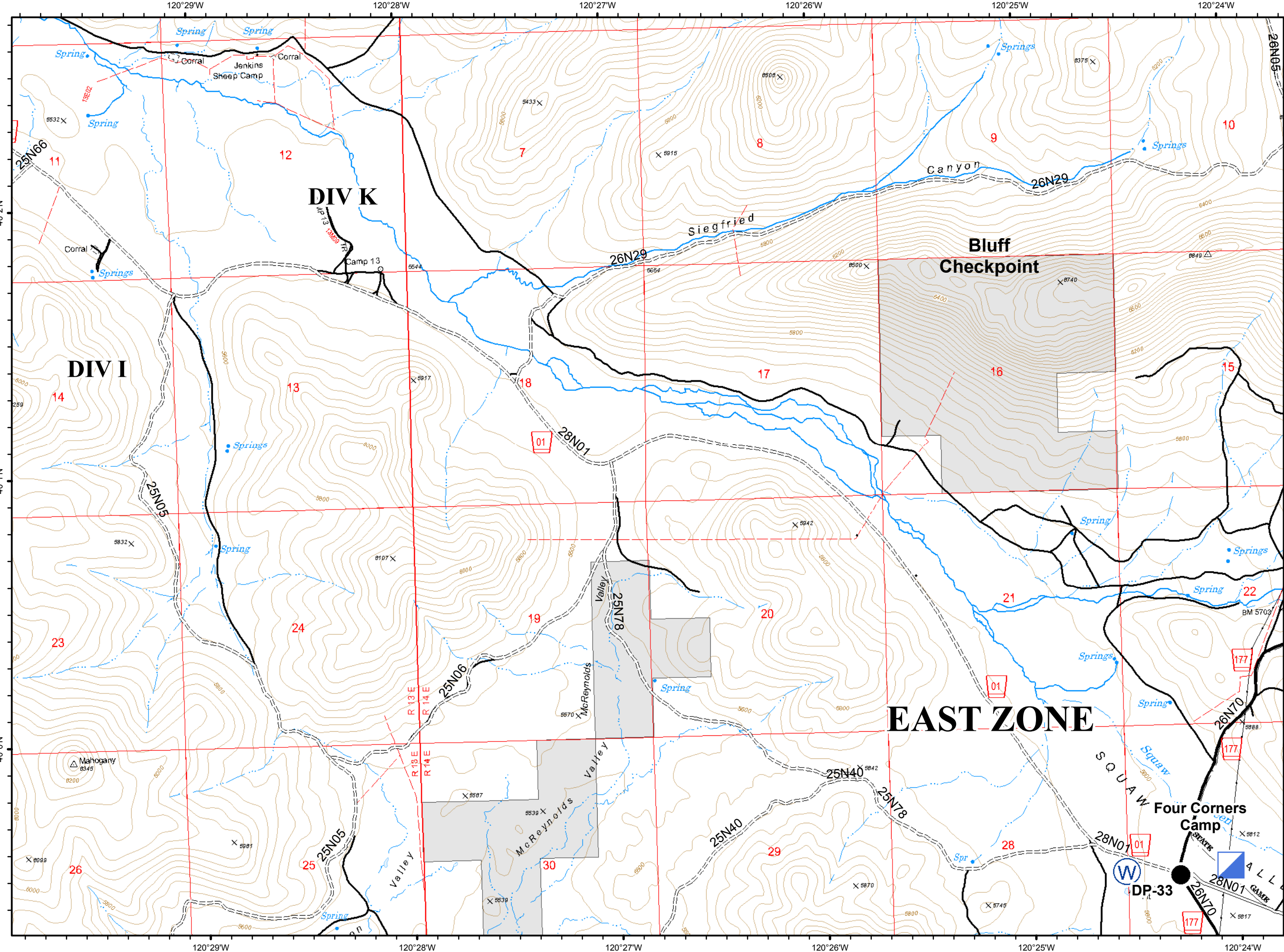
- Dip Site
- Drop Point
- Helispot
- Uncontrolled Fire Edge
- Completed Line
- Completed Dozer Line
- H - Completed Hand Line
- R - Road as Completed Line
- Access or Improved Road
- C - COUNTY, PARISH, BOROUGH
- Basic Custodial Care (Closed)
- High Clearance Roads
- Undetermined, Unknown and Other
- travelRoute



G7



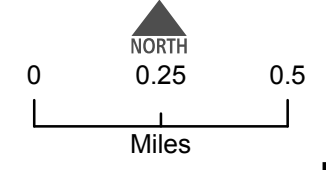
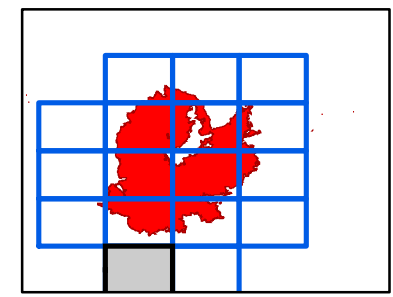
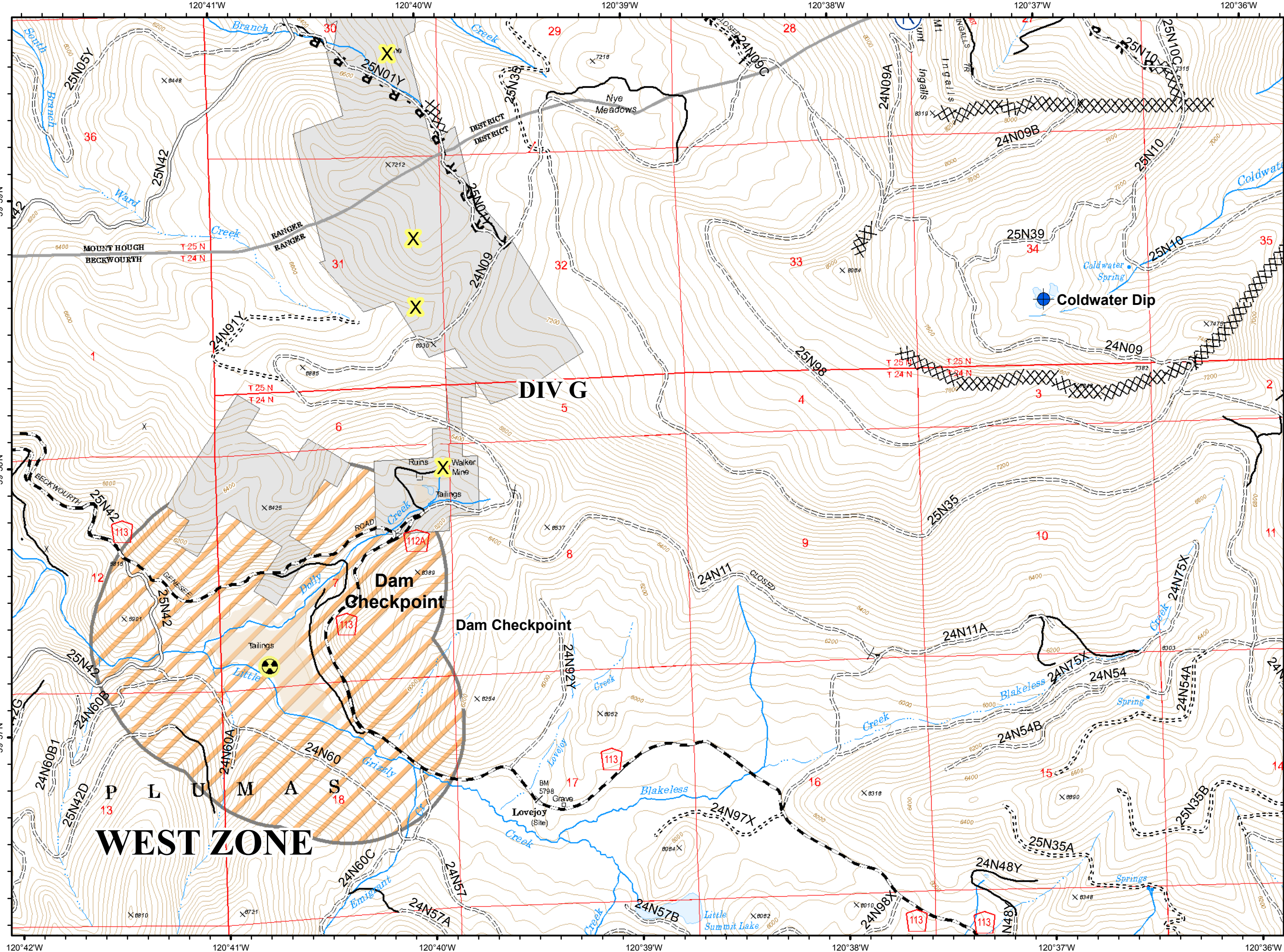
- Drop Point
- ▣ Incident Command Post
- Ⓜ Water Source
- === High Clearance Roads
- Suitable for Passenger Cars
- High Degree of Comfort
- travelRoute



H5

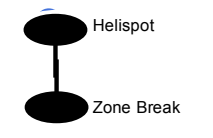


- Dip Site
- Hazard
- Repeater
- Completed Dozer Line
- R - Road as Completed Line
- Exclusion Zone
- C - COUNTY, PARISH, BOROUGH
- NOT - NOT NEEDED
- Basic Custodial Care (Closed)
- High Clearance Roads
- Suitable for Passenger Cars
- travelRoute
- Abandoned Mine



120°35'W 120°34'W 120°33'W 120°32'W 120°31'W 120°30'W

H6



- XXXX Completed Dozer Line
- H - Completed Hand Line
- C - COUNTY, PARISH, BOROUGH
- NOT - NOT NEEDED
- Basic Custodial Care (Closed)
- ==== High Clearance Roads
- ==== Suitable for Passenger Cars
- ==== High Degree of Comfort
- ==== travelRoute

